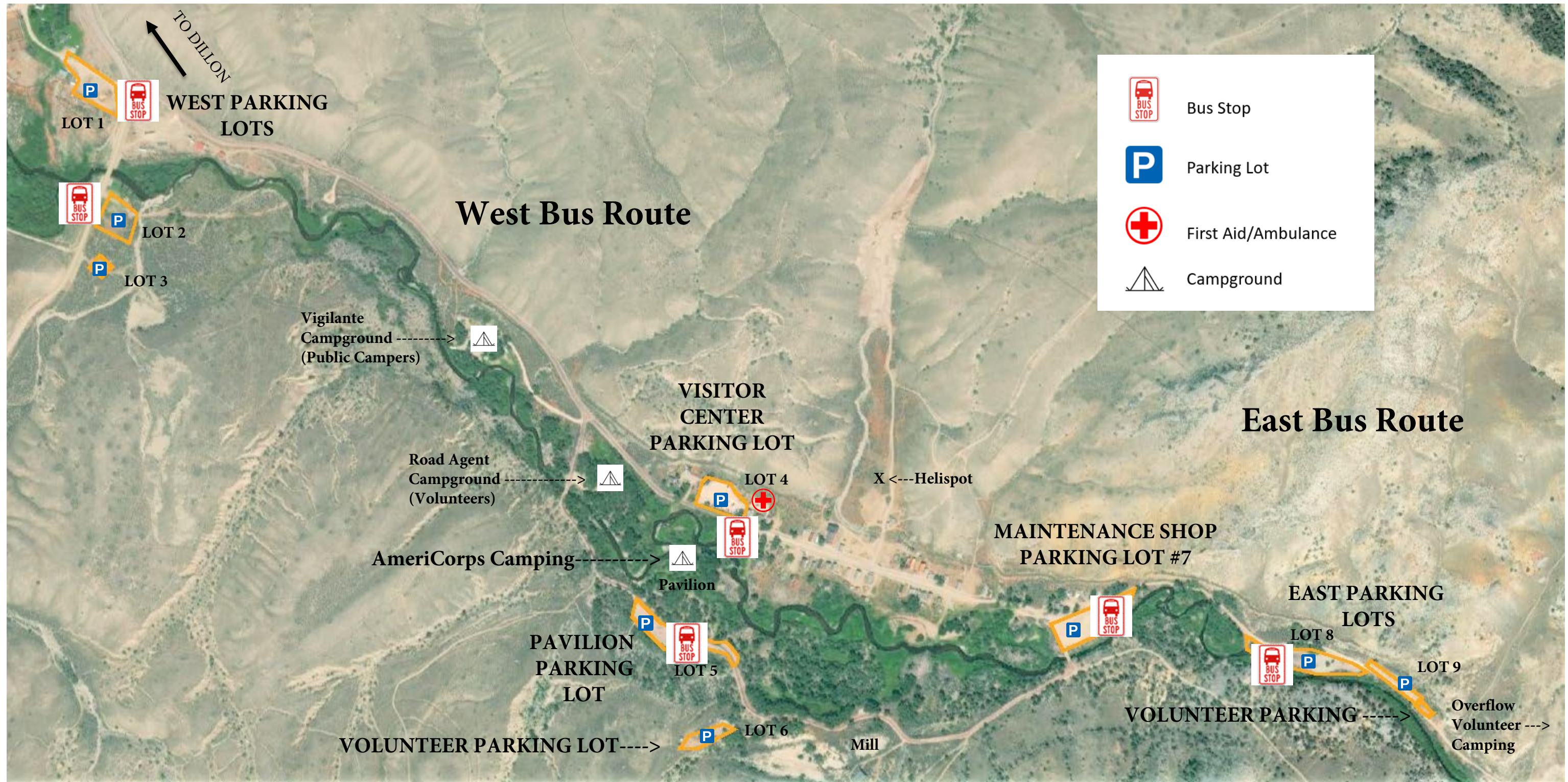


2022 Bannack Days - Transportation Map



East Bus Route:

7:00am - 8:45am: Transport volunteers and vendors only into town from Road Agent Campground and Pavilion Parking Lot.

9:00am - 6:00pm Transport visitors from West End Parking Lots (# 1, 2, 3) and Pavilion Parking Lot (#5) to and from the Visitor Center Parking Lot #4.

West Bus Route:

7:00am-8:45am: Transport volunteers and vendors from East Parking Lots into town through the west gate in the maintenance parking lot.

9:00am-6:00pm: Transport visitors from East Parking Lots (#8, 9) to and from the east gate in the maintenance parking lot #7.