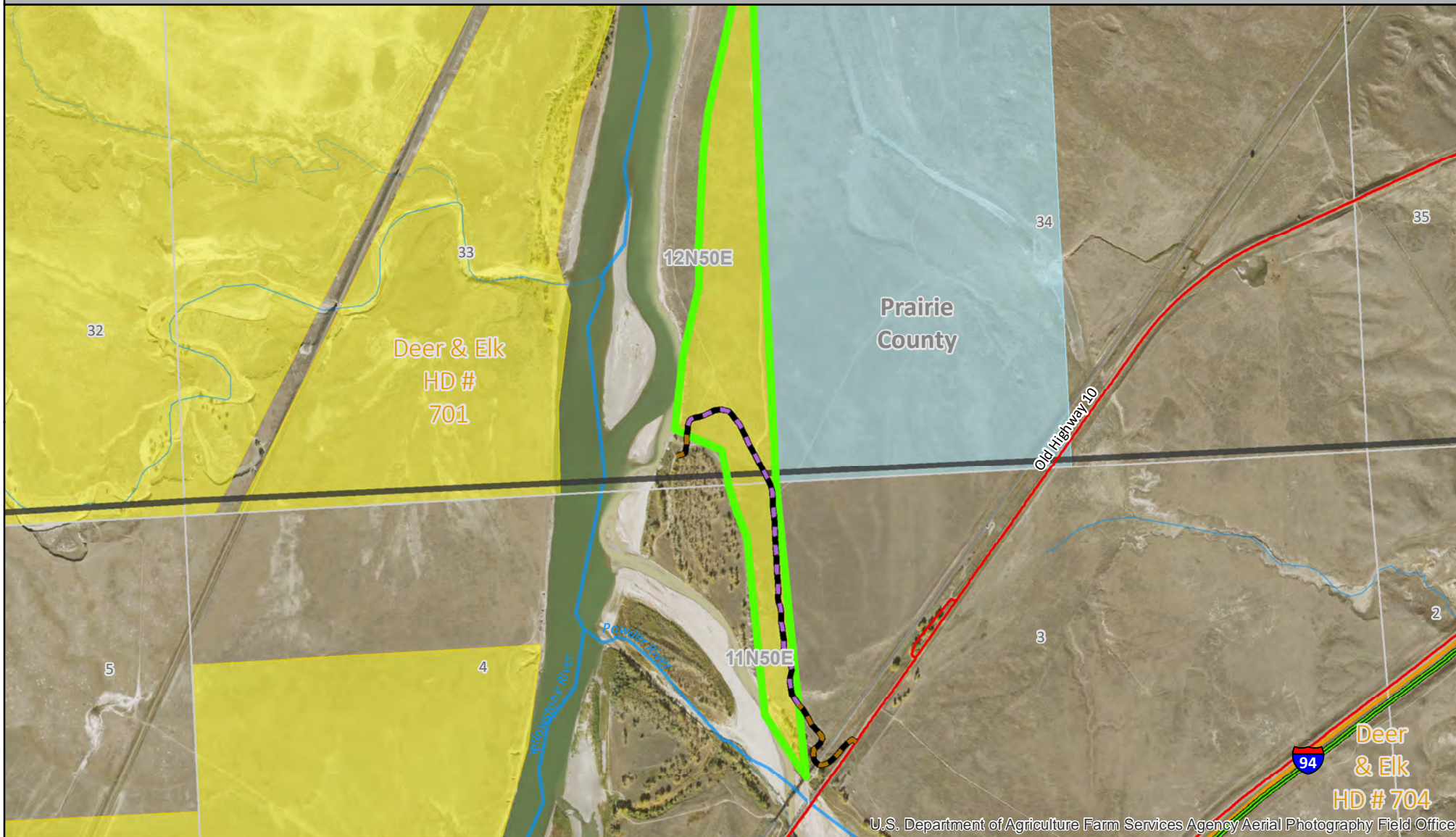







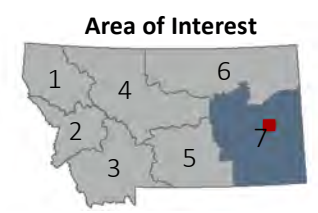
PALA Rules - See Reverse Page



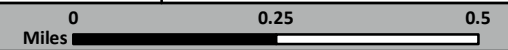
U.S. Department of Agriculture Farm Services Agency Aerial Photography Field Office

-  Access Boundary - PALA
-  Trail (Private Land)
-  Trail (Public Land)
-  US Bureau of Land Management
-  Montana State Trust Land

Map valid for: July 1 - June 30
FWP Region 7
BLM 100K Map(s):
Terry



Possession of this map does not constitute legal access to private land. This map may not depict current property ownership outside the access area. It is every sportsman's responsibility to know the land ownership of the area he or she intends to recreate on, the regulations, and any land use restrictions that may apply.



SACKMAN INC.

PUBLIC ACCESS LAND AGREEMENT (PALA)

Public Land Access Opportunities: Bureau of Land Management and Yellowstone River
Public Land Access Dates: July 1 – June 30

GENERAL INFORMATION

The Sackman Inc. PALA is .82 miles of motorized access road through private property and BLM to access the Yellowstone River and Powder River. The .82 mile PALA access road is a mix of .2 miles of private road and .62 miles of BLM road.

Primary access opportunities: Hunting, Fishing

PERMISSION REQUIREMENTS

No permission required to access the public land using the PALA access road.

Permission is only granted to use the designated access road to the public land. To access the private property beyond the PALA access trail needs the landowner's permission.

HOW TO GET THERE

From Terry:

West on Old Highway 10 approximately 6.2 miles to access point for the Yellowstone River.

PALA RULES

1. **Access is granted through the private land to the BLM and Yellowstone River only.**
2. Motorized vehicle access is restricted to the designated access route on private land to the Yellowstone River and mouth of the Powder River.
3. No driving on access road when muddy.
4. Close the gates behind you!
5. No camping allowed.
6. No hunting, fishing or other recreation is allowed on the private lands.
7. Please adhere to the public land access opportunities listed above.

PUBLIC LAND MANAGEMENT AGENCY RULES:

Existing Bureau of Land Management rules apply. Please contact your local federal agency for more information.



REGION 7 OFFICE

352 I-94 Business Loop, Miles City, MT 59301
PHONE: (406) 234-0930 EMAIL: fwpr7bmp@mt.gov
M – F, 8AM – 5PM (excluding holidays)

FAILURE TO ABIDE BY THESE PALA RULES MAY RESULT IN EVICTION FROM THIS PROPERTY AND/OR A CITATION FOR FAILURE TO OBTAIN LANDOWNER PERMISSION FOR HUNTING.

REPORT VIOLATIONS: 1-800-TIP-MONT