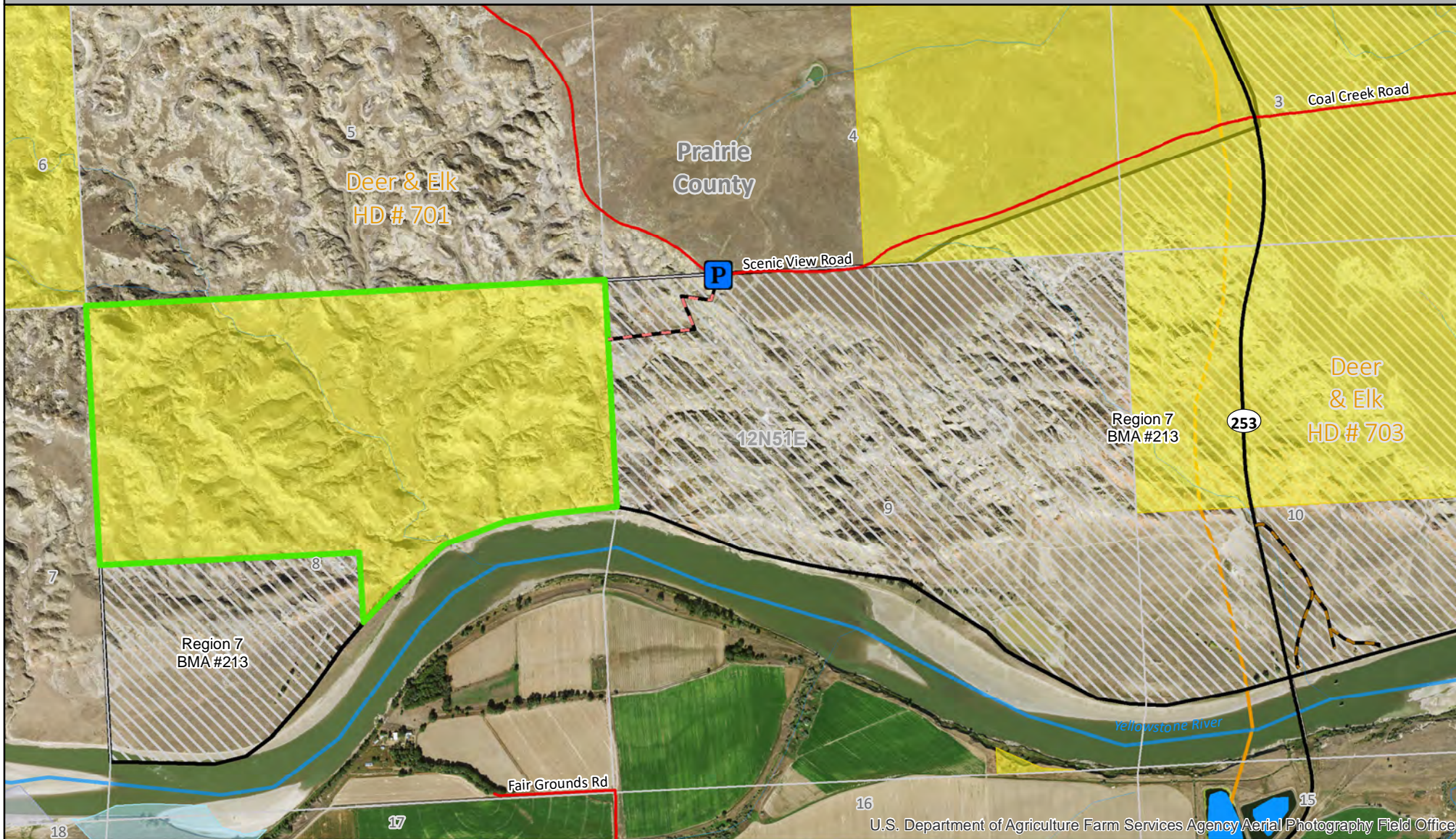


Jared Kountz Public Access Land Agreement

MONTANA FWP

PALA Rules - See Reverse Page



U.S. Department of Agriculture Farm Services Agency Aerial Photography Field Office

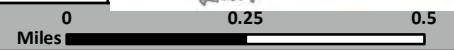
- Access Boundary - PALA
- Trail (Private Land, Walking Only)
- P Parking Area
- Trail (Private Land)
- Neighboring BMA
- US Bureau of Land Management



Map valid for: July 1 - June 30
FWP Region 7
BLM 100K Map(s):
Terry



Possession of this map does not constitute legal access to private land. This map may not depict current property ownership outside the access area. It is every sportsman's responsibility to know the land ownership of the area he or she intends to recreate on, the regulations, and any land use restrictions that may apply.



JARED KOUNTZ

PUBLIC ACCESS LAND AGREEMENT (PALA)

Public Land Access Opportunities: Bureau of Land Management and Yellowstone River
Public Land Access Dates: July 1 – June 30

GENERAL INFORMATION

The Jared Kountz PALA is .32 miles of motorized access road to access the Yellowstone River. Walk-in access is also provided to inaccessible BLM.

Primary access opportunities: Hunting, Fishing

PERMISSION REQUIREMENTS

No permission required to access the public land or the access road to the Yellowstone River.

Permission is only granted to use the designated access road to the Yellowstone River. To access the private property beyond the PALA agreement needs the landowner's permission.

Between August 15 – January 1 & Spring Turkey Season, permission for hunting the private land is granted through the Block Management Program.

HOW TO GET THERE

From Terry:

North on Hwy 253 approximately 1 mile to access point for the Yellowstone River.

PALA RULES

1. **Access is granted through the private land to the BLM and Yellowstone River only.**
2. Motorized vehicle access is restricted to the designated access route on private land to the Yellowstone River.
3. Boat launching is allowed from the private land to the Yellowstone River.
4. Walk-in access from designated parking area only to the BLM Land off of Scenic View Road.
5. No hunting, fishing or other recreation is allowed on the private lands.
6. Please adhere to the public land access opportunities listed above.

PUBLIC LAND MANAGEMENT AGENCY RULES:

Existing Bureau of Land Management rules apply. Please contact your local federal agency for more information.



REGION 7 OFFICE

352 I-94 Business Loop, Miles City, MT 59301
PHONE: (406) 234-0930 EMAIL: fwpr7bmp@mt.gov
M – F, 8AM – 5PM (excluding holidays)

FAILURE TO ABIDE BY THESE PALA RULES MAY RESULT IN EVICTION FROM THIS PROPERTY AND/OR A CITATION FOR FAILURE TO OBTAIN LANDOWNER PERMISSION FOR HUNTING.

REPORT VIOLATIONS: 1-800-TIP-MONT