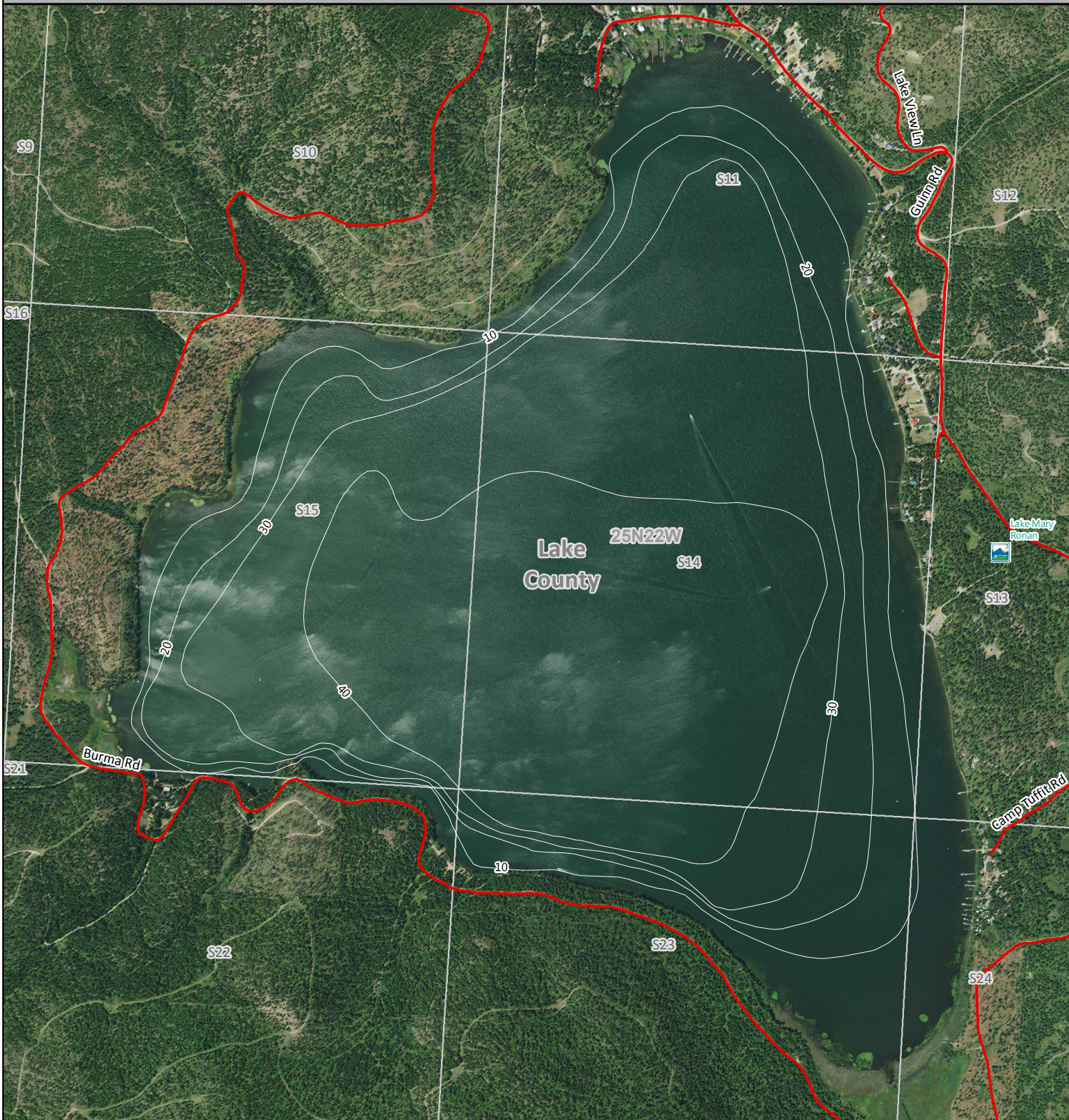


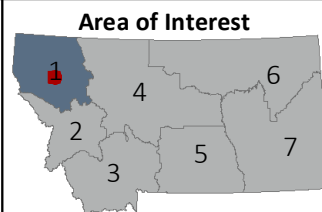
Bathymetry Survey Map



 State Park



Elevation: 3709 Feet
Area: 1512 Acres
Max Depth: 47 Feet
Volume: 42592 Acre-Feet
Ave Depth: 28 Feet



Map Produced by: Geographic Data Services Section Date: 06/27/2018 Lake levels may change. This map is not suitable for navigation. Lake Mapped on 2011-07-18

Administrative boundaries and FWP Lands data from Montana Fish, Wildlife & Parks, Helena, MT.

Other data from Montana State Library, Helena, MT. Background Imagery from USDA Aerial Photography Field Office, 2015

