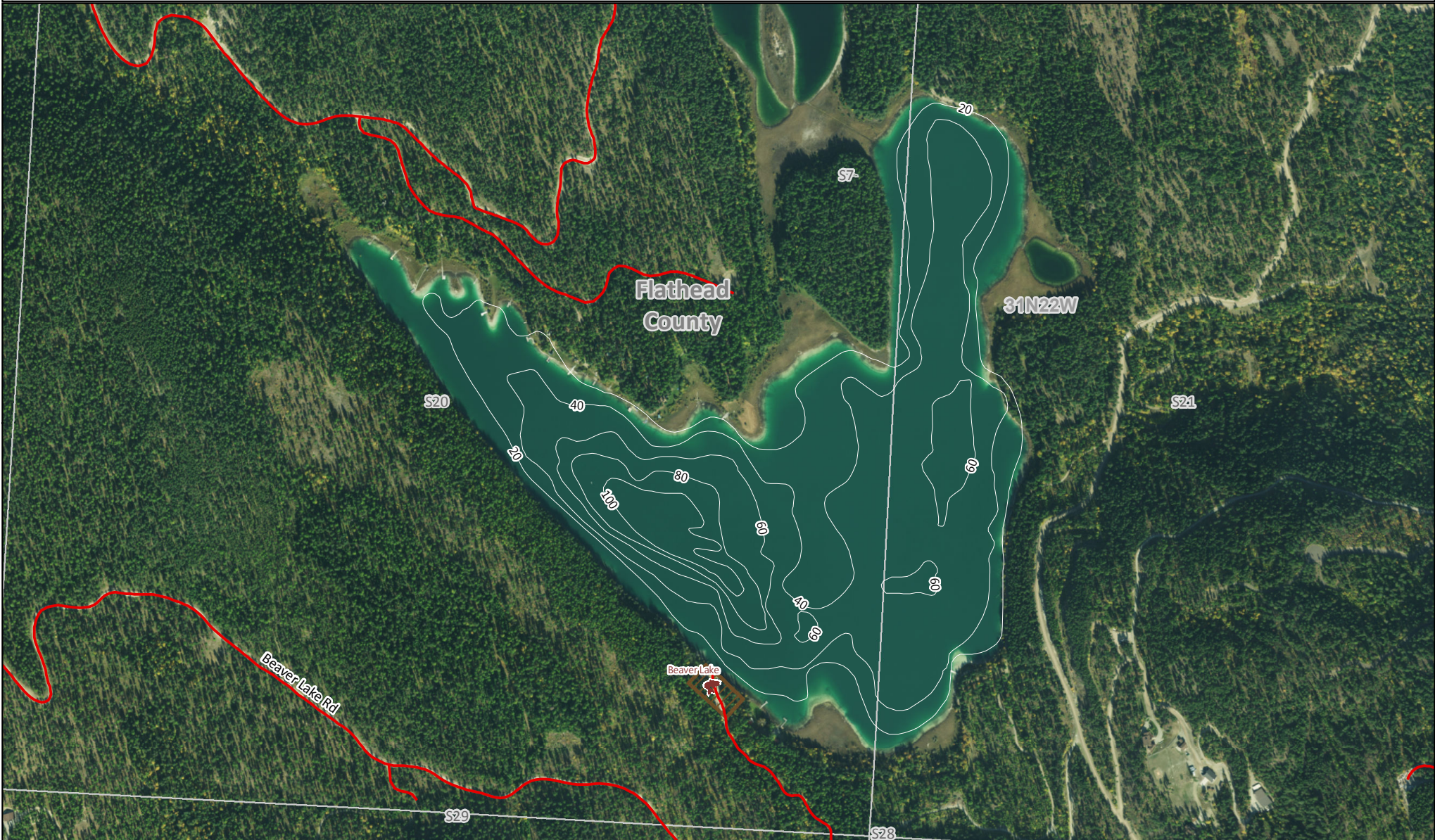


Beaver Lake

MONTANA FWP

Bathymetry Survey Map



Area of Interest



Elevation: 3257 Feet
Area: 144 Acres
Max Depth: 111 Feet
Volume: 5862 Acre-Feet
Ave Depth: 40 Feet

Map Produced by: Geographic Data Services Section Date: 06/27/2018 Lake levels may change. This map is not suitable for navigation. Lake Mapped on 2011-07-18

Administrative boundaries and FWP Lands data from Montana Fish, Wildlife & Parks, Helena, MT. Other data from Montana State Library, Helena, MT. Background Imagery from USDA Aerial Photography Field Office, 2015

0 0.075 0.15
Miles