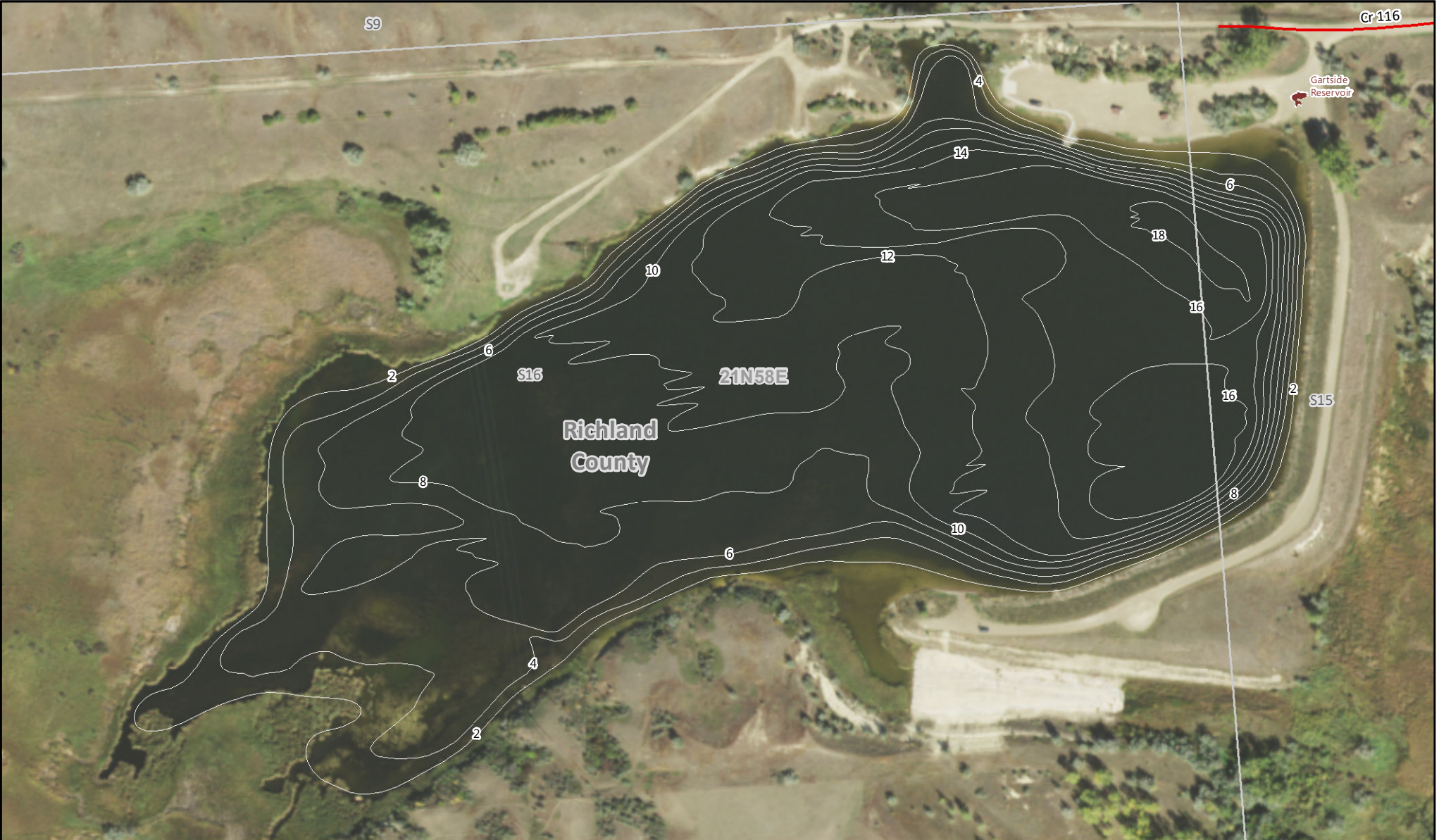


Gartside Reservoir

MONTANA FWP

Bathymetry Survey Map



Area of Interest



Elevation: 1,997 ft
Area: 34.8 acres
Max Depth: 20 ft
Volume: 315 af
Average Depth: 10.1 ft

Map Produced by: Geographic Data Services Section Date: 08/27/2022 Lake levels may change. This map is not suitable for navigation.

Administrative boundaries and FWP Lands data from Montana Fish, Wildlife & Parks, Helena, MT. Other data from Montana State Library, Helena, MT. Background Imagery from USDA Aerial Photography Field Office, 2015

