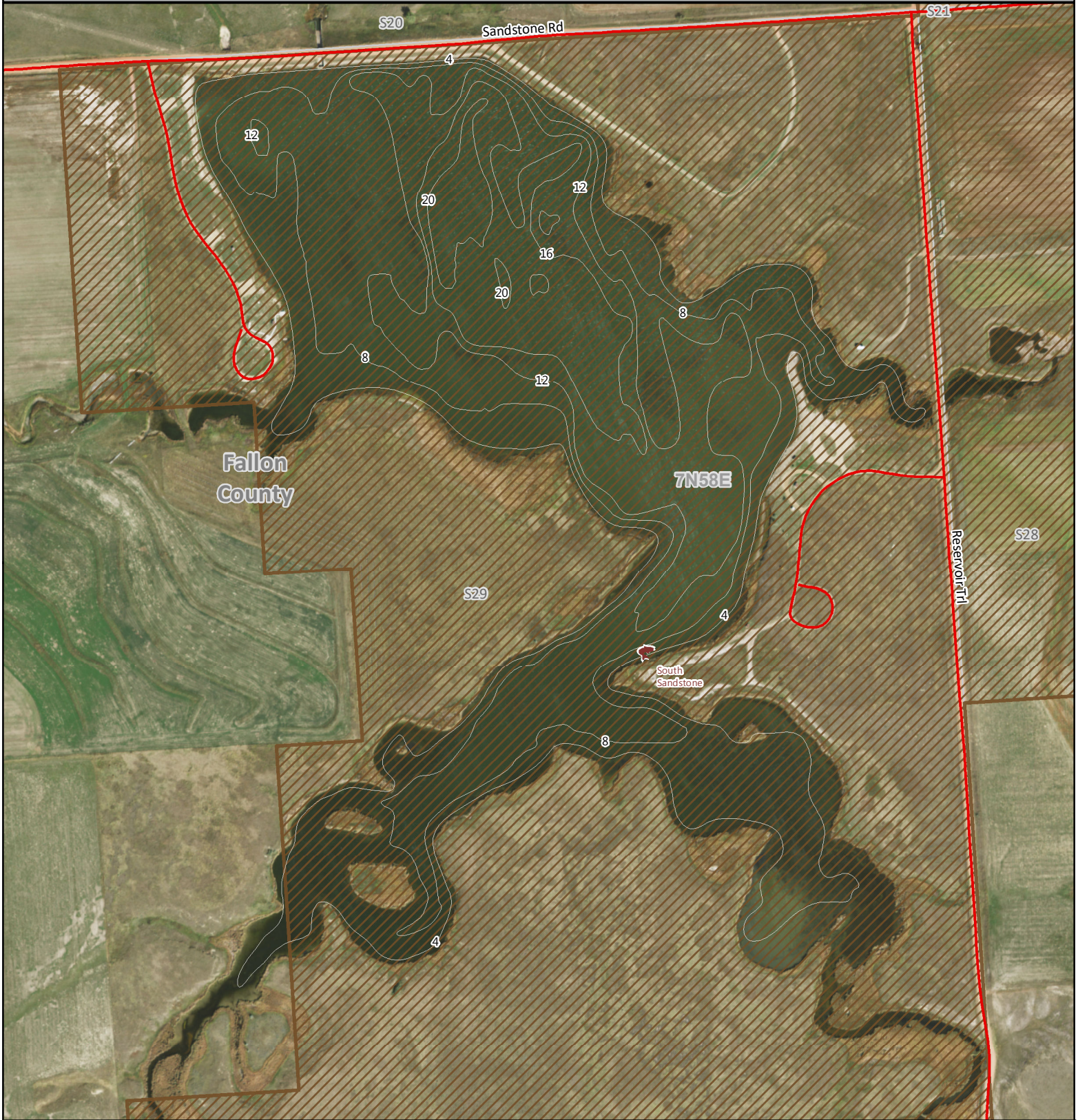


South Sandstone Reservoir

MONTANA FWP

Bathymetry Survey Map



 FWP Fishing Access

Elevation - 2,861 ft
Area - 106 acres
Max Depth: 22 ft
Volume - 929 af
Average Depth - 6.2 ft



Map Produced by: Geographic Data Services Section Date: 05/23/2022 Lake levels may change. This map is not suitable for navigation. Lake Mapped on 06/28/206

Administrative boundaries and FWP Lands data from Montana Fish, Wildlife & Parks, Helena, MT.
Other data from Montana State Library, Helena, MT. Background Imagery from USDA Aerial Photography Field Office, 2015

