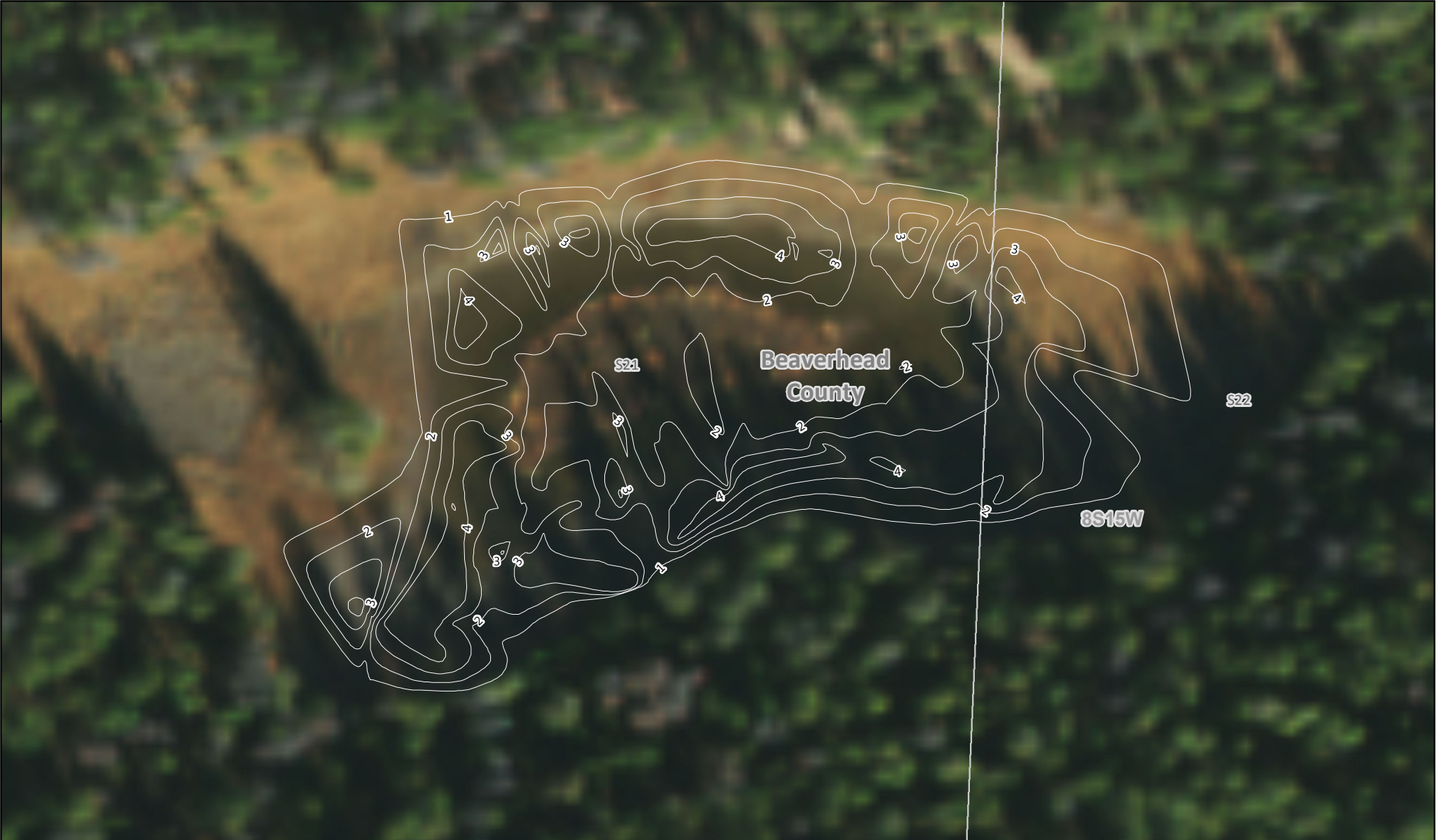


Mooney Lake

MONTANA FWP

Bathymetry Survey Map



Elevation: 7464 Feet
Area: 1 Acres
Max Depth: N/A
Volume: N/A
Ave Depth: N/A



Map Produced by: Geographic Data Services Section Date: 06/27/2018 Lake levels may change. This map is not suitable for navigation. Lake Mapped on 2017-09-27

Administrative boundaries and FWP Lands data from Montana Fish, Wildlife & Parks, Helena, MT. Other data from Montana State Library, Helena, MT. Background Imagery from USDA Aerial Photography Field Office, 2015

