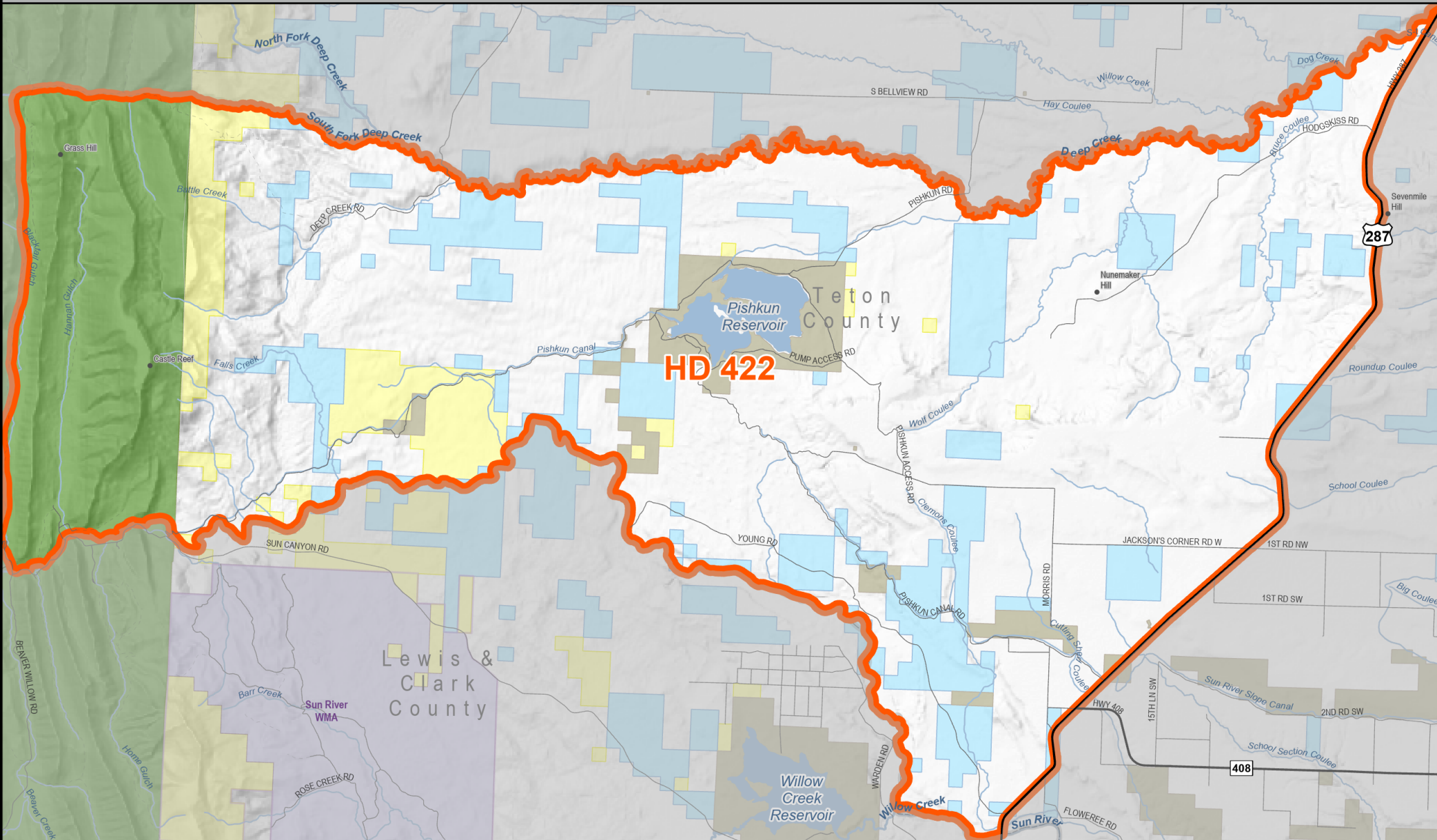


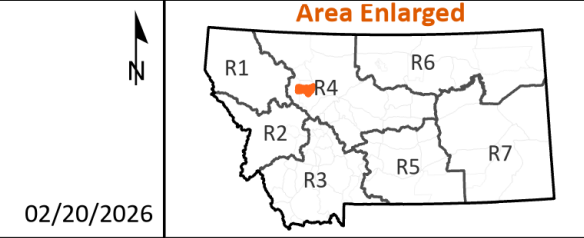
Sheep Hunting District 422

MONTANA FWP

2026 - 2027 Seasons

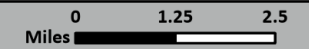


- Hunting District
- County
- Public Lands**
 - BLM
 - Montana Fish, Wildlife, and Parks
 - Other Federal Lands
- State of Montana**
 - State of Montana
 - US Forest Service
 - Other Federal Lands



02/20/2026

NOTE: Map is intended as a guide, please see printed regulations for official rules and legal descriptions of actual boundaries. It is every hunter's responsibility to know the land ownership of the area he or she intends to hunt and any land use restrictions that may apply there. Hunting District information from Montana Fish, Wildlife & Parks. All other data from Montana State Library



Sheep Hunting District 422

Castle Reef - Legal Description:

Those portions of Teton County lying within the following-described boundary: Beginning at the intersection of Deep Creek and U.S. Highway 287, then up said creek to the confluence of its north and south forks, then up the South Fork of Deep Creek to the intersection of USFS Trails 128 and 223 at the mouth of Erosion Creek, then south along USFS Trail 223 (through Blacktail Gulch) to the Sun Canyon Road, then south along said road to the Sun River, then easterly down said river to its intersection with U.S. Highway 287, then north along said highway to Deep Creek, the point of beginning.

Landcover	Square Miles	Percent
Alpine	1.6	0.8
Forest and Woodland	22.8	11.9
Grassland	79.1	41.3
Human Land Use	24.4	12.7
Open Water / Wetland and Riparian	10.3	5.4
Recently Disturbed or Modified	0.0	0.0
Shrubland, Steppe and Savanna	46.9	24.4
Sparse and Barren	6.7	3.5

Ownership	SqMiles	Percent
Private	120.9	63.1
Public	68.1	35.5
Reservation	0.0	0.0
Water	2.7	1.4
Total	191.7	100.0

Public Ownership	Percent
City Government	0.0
County Government	0.0
Local Government	0.0
Montana Department of Corrections	0.0
Montana Department of Natural Resources and Conservation	0.0
Montana Department of Transportation	0.0
Montana Fish, Wildlife, and Parks	0.0
Montana State Trust Lands	14.0
Montana University System	0.0
National Park Service	0.0
State of Montana	0.0
US Army Corps of Engineers	0.0
US Bureau of Land Management	5.1
US Bureau of Reclamation	3.5
US Department of Agriculture	0.0
US Department of Defense	0.0
US Fish and Wildlife Service	0.0
US Forest Service	12.9
US Government	0.0
Water	0.0