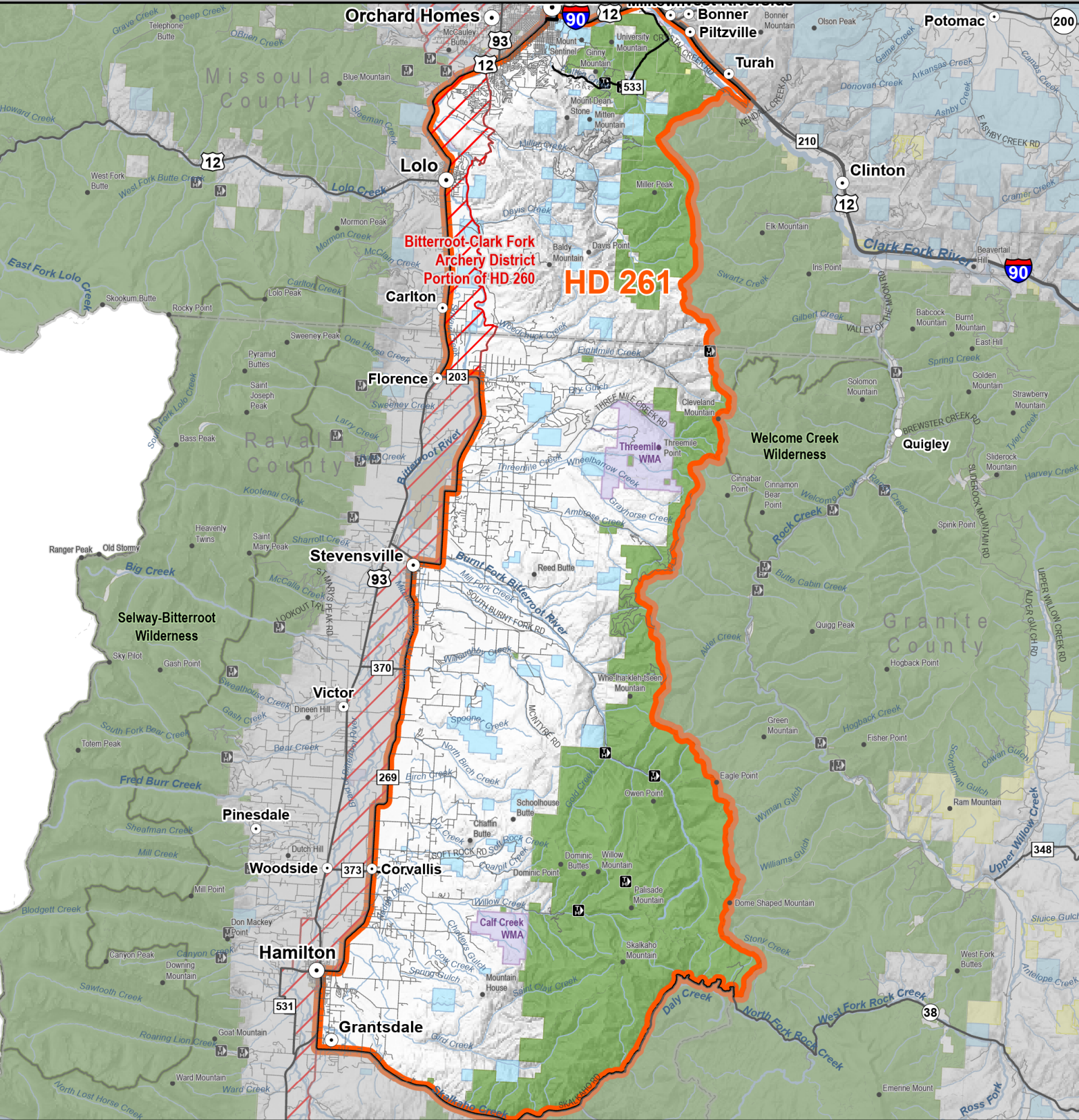


Moose Hunting District 261

MONTANA FWP

2026 - 2027 Seasons



- Big Game Restricted Area
- Hunting District
- County

- Public Lands**
- BLM
 - Montana Fish, Wildlife, and Parks
 - State of Montana
 - US Forest Service
 - Other Federal Lands



02/20/2026

NOTE: Map is intended as a guide, please see printed regulations for official rules and legal descriptions of actual boundaries. It is every hunter's responsibility to know the land ownership of the area he or she intends to hunt and any land use restrictions that may apply there. Hunting District information from Montana Fish, Wildlife & Parks. All other data from Montana State Library



Moose Hunting District 261

East Bitterroot - Legal Description:

Those portions of Ravalli and Missoula Counties lying within the following-described boundary: Beginning at Hamilton, then north on Route 269 to U.S. Highway 93 at Florence, then northerly along said highway to its junction with Interstate 90, then easterly along said interstate to its junction with County Route 46 near Turah, then southwest along said route to Crystal Creek, then south along said creek to its head at the Clark Fork-Bitterroot Divide, then south along said divide to the Bitterroot-Rock Creek divide, then south along said divide to Route 38 east of Hamilton, then westerly along said route to U.S. Highway 93, then north along said highway to Hamilton, the point of beginning.

Landcover	Square Miles	Percent
Alpine	0.0	0.0
Forest and Woodland	259.7	44.2
Grassland	103.4	17.6
Human Land Use	135.4	23.0
Open Water / Wetland and Riparian	13.4	2.3
Recently Disturbed or Modified	12.5	2.1
Shrubland, Steppe and Savanna	62.6	10.6
Sparse and Barren	1.1	0.2

Ownership	SqMiles	Percent
Private	353.4	60.1
Public	234.6	39.9
Reservation	0.0	0.0
Water	0.0	0.0
Total	588.0	100.0

Public Ownership	Percent
City Government	0.5
County Government	0.2
Local Government	0.1
Montana Department of Corrections	0.0
Montana Department of Natural Resources and Conservation	0.0
Montana Department of Transportation	0.0
Montana Fish, Wildlife, and Parks	2.6
Montana State Trust Lands	4.7
Montana University System	0.2
National Park Service	0.0
State of Montana	0.0
US Army Corps of Engineers	0.0
US Bureau of Land Management	0.0
US Bureau of Reclamation	0.0
US Department of Agriculture	0.0
US Department of Defense	0.0
US Fish and Wildlife Service	0.0
US Forest Service	31.5
US Government	0.0
Water	0.0