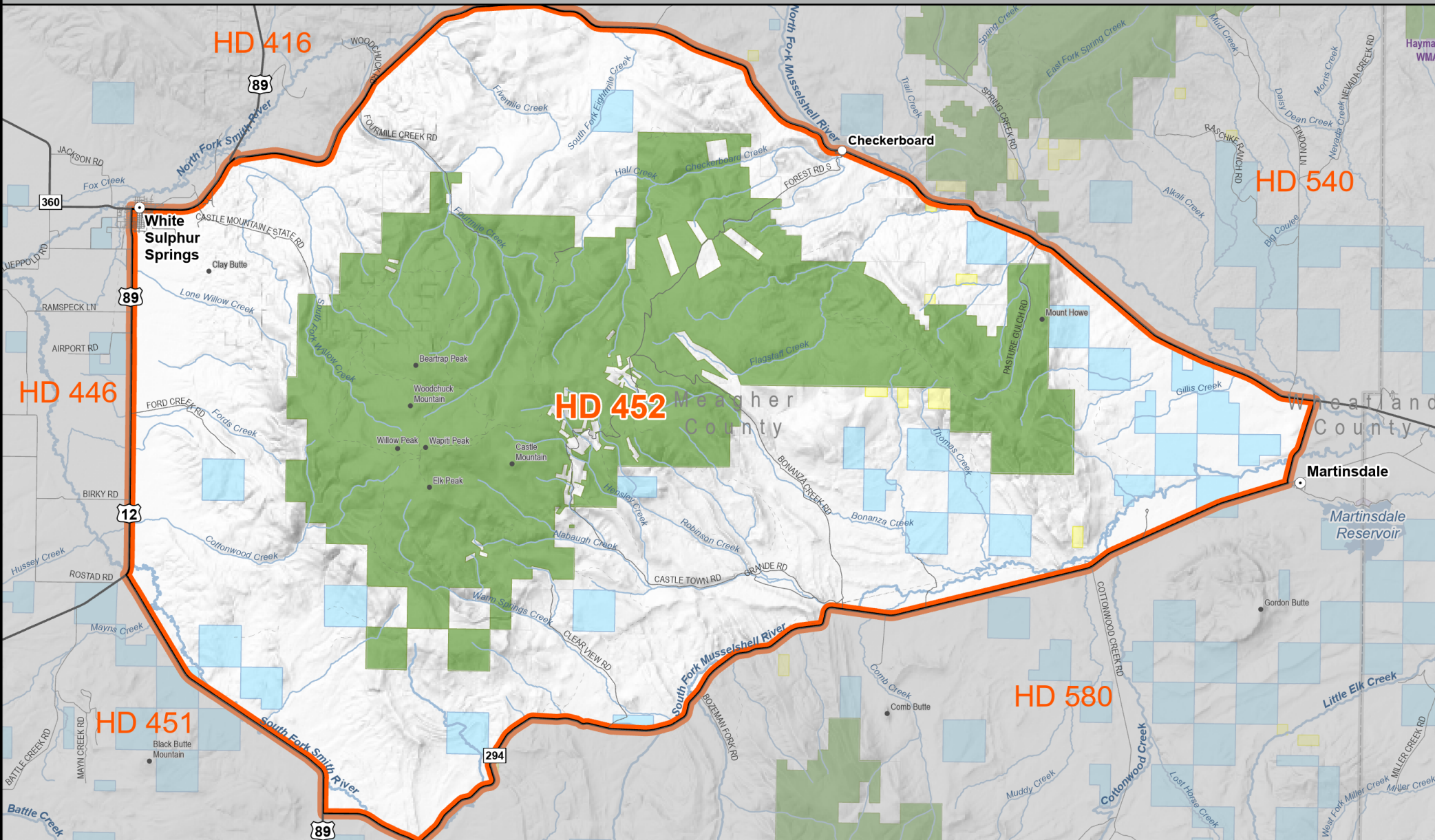


Deer/Elk Hunting District 452

MONTANA FWP

2026 - 2027 Seasons



Hunting District

County

Public Lands

BLM

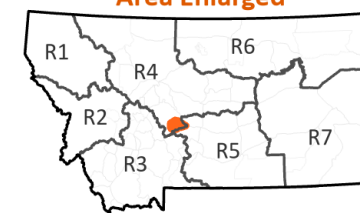
Montana Fish, Wildlife, and Parks

State of Montana

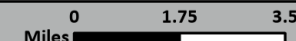
US Forest Service



Area Enlarged



02/20/2026



NOTE: Map is intended as a guide, please see printed regulations for official rules and legal descriptions of actual boundaries. It is every hunter's responsibility to know the land ownership of the area he or she intends to hunt and any land use restrictions that may apply there. Hunting District information from Montana Fish, Wildlife & Parks. All other data from Montana State Library

Deer/Elk Hunting District 452

- Castle Mountains - Legal Description:

That portion of Meagher County lying within the following-described boundary: Beginning at the intersection of US Highways 89 and 12 northeast of White Sulphur Springs, then easterly on US Highway 12 to its intersection with Route 294 north of Martinsdale, then southwesterly along said route to its intersection with US Highway 89 north of Ringling, then northerly along said highway through White Sulphur Springs to its intersection with US Highway 12, the point of beginning.

Landcover	Square Miles	Percent
Alpine	0.0	0.0
Forest and Woodland	116.8	34.5
Grassland	102.6	30.3
Human Land Use	29.4	8.7
Open Water / Wetland and Riparian	7.3	2.1
Recently Disturbed or Modified	0.3	0.1
Shrubland, Steppe and Savanna	80.0	23.6
Sparse and Barren	1.9	0.6

Ownership	SqMiles	Percent
Private	207.4	61.3
Public	130.9	38.7
Reservation	0.0	0.0
Water	0.0	0.0
Total	338.3	100.0

Public Ownership	Percent
City Government	0.0
County Government	0.0
Local Government	0.0
Montana Department of Corrections	0.0
Montana Department of Natural Resources and Conservation	0.0
Montana Department of Transportation	0.0
Montana Fish, Wildlife, and Parks	0.0
Montana State Trust Lands	6.2
Montana University System	0.0
National Park Service	0.0
State of Montana	0.0
US Army Corps of Engineers	0.0
US Bureau of Land Management	0.3
US Bureau of Reclamation	0.0
US Department of Agriculture	0.0
US Department of Defense	0.0
US Fish and Wildlife Service	0.0
US Forest Service	32.2
US Government	0.0
Water	0.0