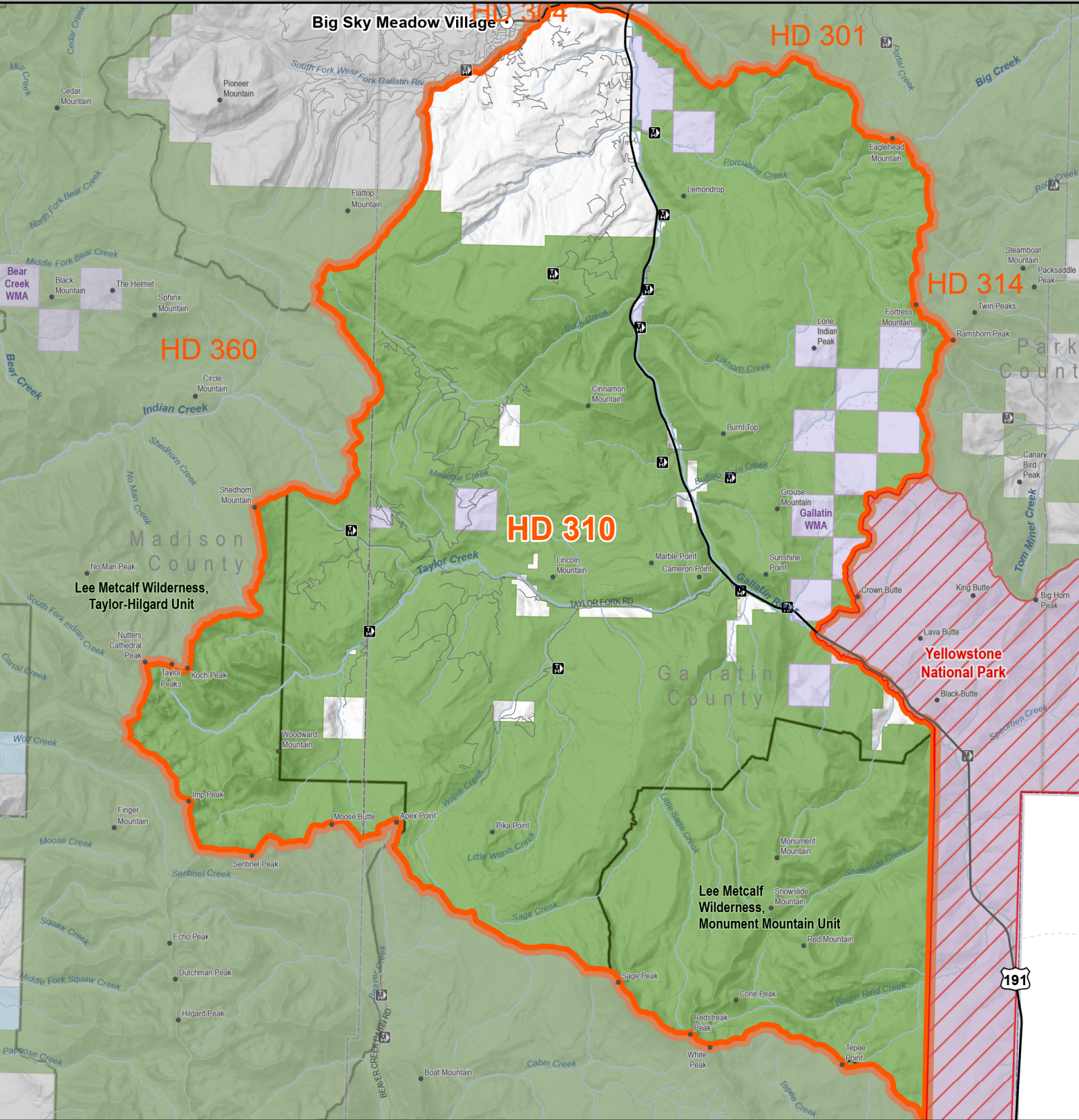


2026 - 2027 Seasons



Big Game Restricted Area	Public Lands
Hunting District	Montana Fish, Wildlife, and Parks
County	National Park Service
	State of Montana
	US Forest Service

Area Enlarged

02/20/2026

NOTE: Map is intended as a guide, please see printed regulations for official rules and legal descriptions of actual boundaries. It is every hunter's responsibility to know the land ownership of the area he or she intends to hunt and any land use restrictions that may apply there. Hunting District information from Montana Fish, Wildlife & Parks. All other data from Montana State Library



Deer/Elk Hunting District 310

- Upper Gallatin - Legal Description:

Those portions of Gallatin and Madison Counties lying within the following-described boundary: Beginning at the confluence of the West Fork of the Gallatin River with the Gallatin River at Big Sky, then in an easterly direction along Levinski Ridge and the Portal Creek-Porcupine Creek divide to Eaglehead Mountain, then south along the Gallatin and Yellowstone River divide to the Yellowstone National Park Boundary, then south along the Yellowstone National Park Boundary to the Madison/Gallatin Rivers divide, then west and then north along the Madison/Gallatin Rivers divide to the headwaters of Buck Creek, then north and east along the First Yellow Mule Creek, then north and east along the South Fork of the Gallatin River to the bridge at Skywood Road, then north from Skywood Road to Highway 64, then east along Highway 64 to its easternmost confluence with the West Fork of the Gallatin River, then east along the West Fork of the Gallatin River to its confluence with the Gallatin River, the point of the beginning. NOTE: The Gallatin Special Management Area (Bacon Rind and Buffalo Horn Units) are closed to all deer and elk hunting except Elk hunting by special permit only.

Landcover	Square Miles	Percent
Alpine	16.2	5.2
Forest and Woodland	211.3	67.3
Grassland	15.7	5.0
Human Land Use	3.3	1.0
Open Water / Wetland and Riparian	6.4	2.0
Recently Disturbed or Modified	4.4	1.4
Shrubland, Steppe and Savanna	42.0	13.4
Sparse and Barren	14.3	4.6

Ownership	SqMiles	Percent
Private	28.9	9.2
Public	284.9	90.8
Reservation	0.0	0.0
Water	0.0	0.0
Total	313.8	100.0

Public Ownership	Percent
City Government	0.0
County Government	0.0
Local Government	0.0
Montana Department of Corrections	0.0
Montana Department of Natural Resources and Conservation	0.0
Montana Department of Transportation	0.0
Montana Fish, Wildlife, and Parks	4.3
Montana State Trust Lands	0.0
Montana University System	0.0
National Park Service	0.0
State of Montana	0.0
US Army Corps of Engineers	0.0
US Bureau of Land Management	0.0
US Bureau of Reclamation	0.0
US Department of Agriculture	0.0
US Department of Defense	0.0
US Fish and Wildlife Service	0.0
US Forest Service	86.5
US Government	0.0
Water	0.0