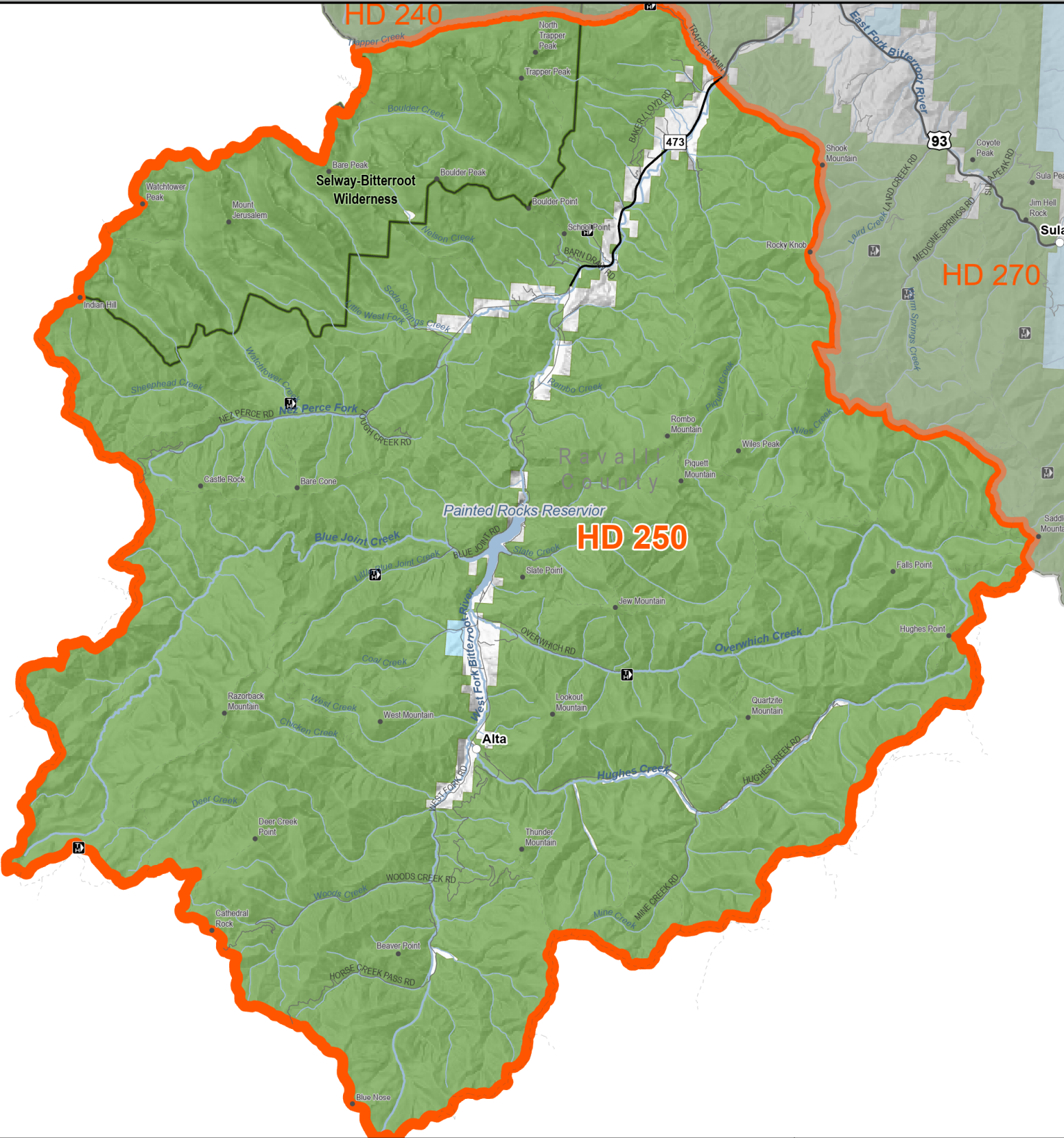


2026 - 2027 Seasons



Hunting District

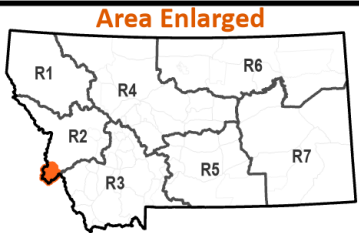
County

Public Lands

Montana Fish, Wildlife, and Parks

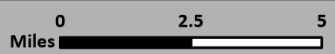
State of Montana

US Forest Service



02/20/2026

NOTE: Map is intended as a guide, please see printed regulations for official rules and legal descriptions of actual boundaries. It is every hunter's responsibility to know the land ownership of the area he or she intends to hunt and any land use restrictions that may apply there. Hunting District information from Montana Fish, Wildlife & Parks. All other data from Montana State Library



Deer/Elk Hunting District 250

- West Fork Bitterroot - Legal Description:

That portion of Ravalli County lying within the following-described boundary: Beginning at the junction of US Highway 93 and County Road 98 near Conner, then west along said road to its junction with the West Fork Bitterroot Road, then southwest on said road to its junction with the ridgeline between the Spade Creek and Piquette Creek drainages (along the boundary between the West Fork and Darby Ranger Districts), then up said ridgeline to USFS Trail 601 and Shook Mountain, then south on said trail to Medicine Point and USFS Trail 56, then south on said trail to the headwaters of Base Creek, then southeast down said creek to its junction with Wiles Creek, then east down said creek to its junction with Warm Springs Creek, then southeast up said creek to its junction with Porcupine Creek, then southeast up said creek and along the headwaters in Sections 24 and 25, Township 1 South, Range 20 West, to the ridgeline between Camp Creek and Shields Creek, then south on said ridgeline to the Montana-Idaho border, then in a southwesterly and northerly direction along said border to its junction with the Trapper Creek headwaters, then east and southeast down said creek to its junction with the West Fork Bitterroot Road, then northeast along said road to its junction with County Road 98, then east on said road to its junction with US Highway 93 near Conner, the point of beginning.

Landcover	Square Miles	Percent
Alpine	0.0	0.0
Forest and Woodland	378.3	68.2
Grassland	14.5	2.6
Human Land Use	3.4	0.6
Open Water / Wetland and Riparian	7.0	1.3
Recently Disturbed or Modified	28.5	5.1
Shrubland, Steppe and Savanna	94.6	17.0
Sparse and Barren	28.5	5.1

Ownership	SqMiles	Percent
Private	14.6	2.6
Public	539.1	97.2
Reservation	0.0	0.0
Water	0.9	0.2
Total	554.6	100.0

Public Ownership	Percent
City Government	0.0
County Government	0.0
Local Government	0.0
Montana Department of Corrections	0.0
Montana Department of Natural Resources and Conservation	0.1
Montana Department of Transportation	0.0
Montana Fish, Wildlife, and Parks	0.0
Montana State Trust Lands	0.1
Montana University System	0.0
National Park Service	0.0
State of Montana	0.0
US Army Corps of Engineers	0.0
US Bureau of Land Management	0.0
US Bureau of Reclamation	0.0
US Department of Agriculture	0.0
US Department of Defense	0.0
US Fish and Wildlife Service	0.0
US Forest Service	97.0
US Government	0.0
Water	0.0