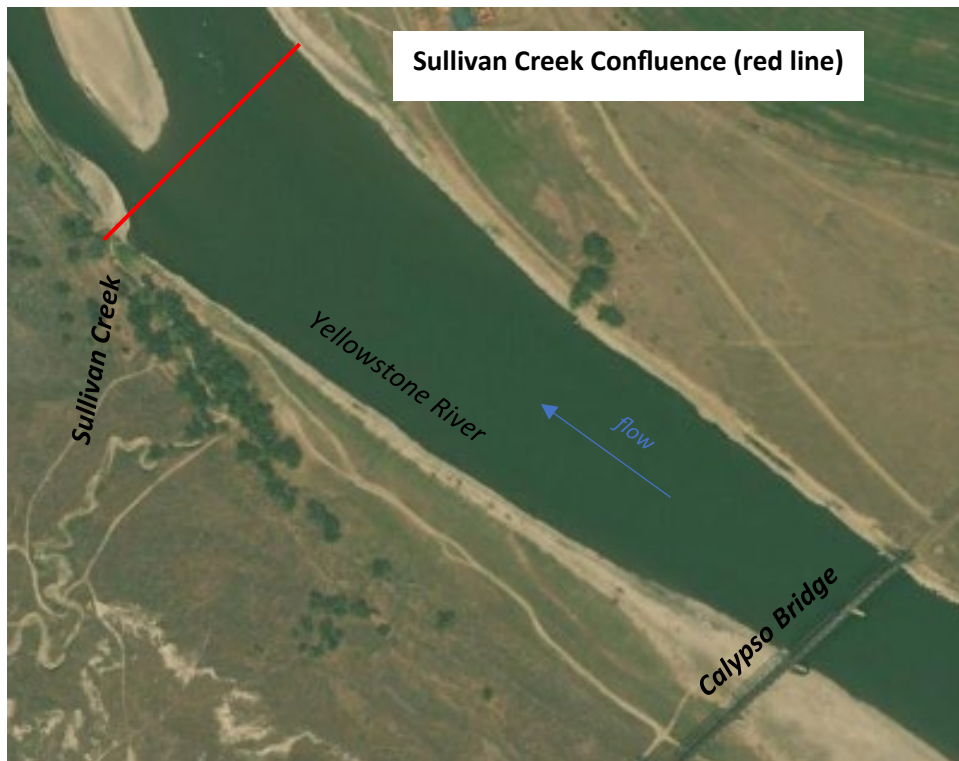
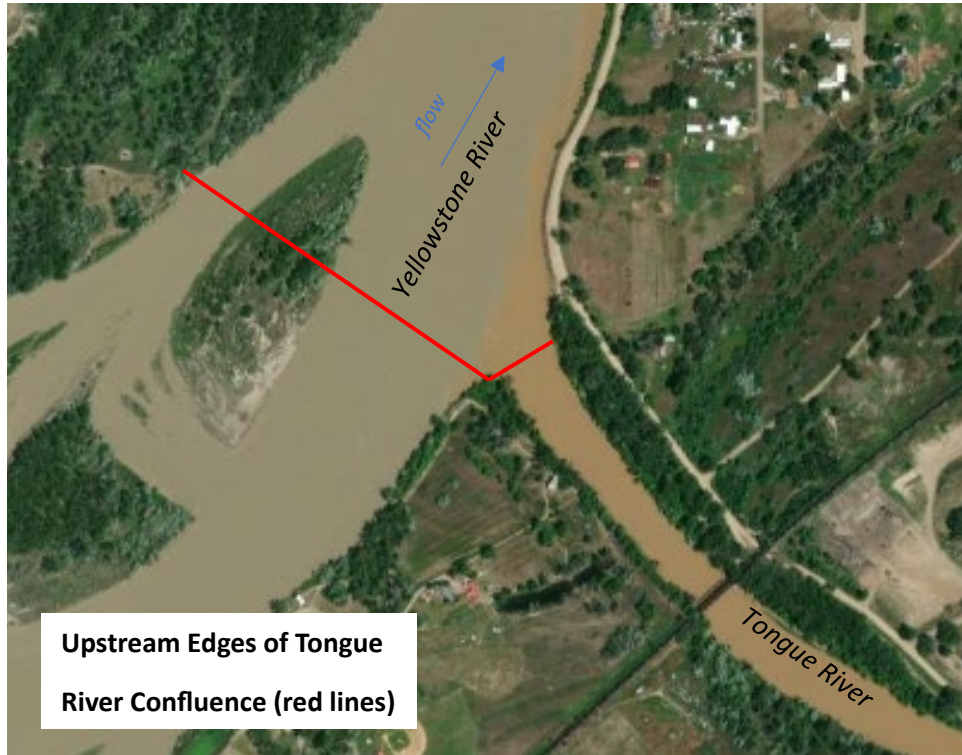
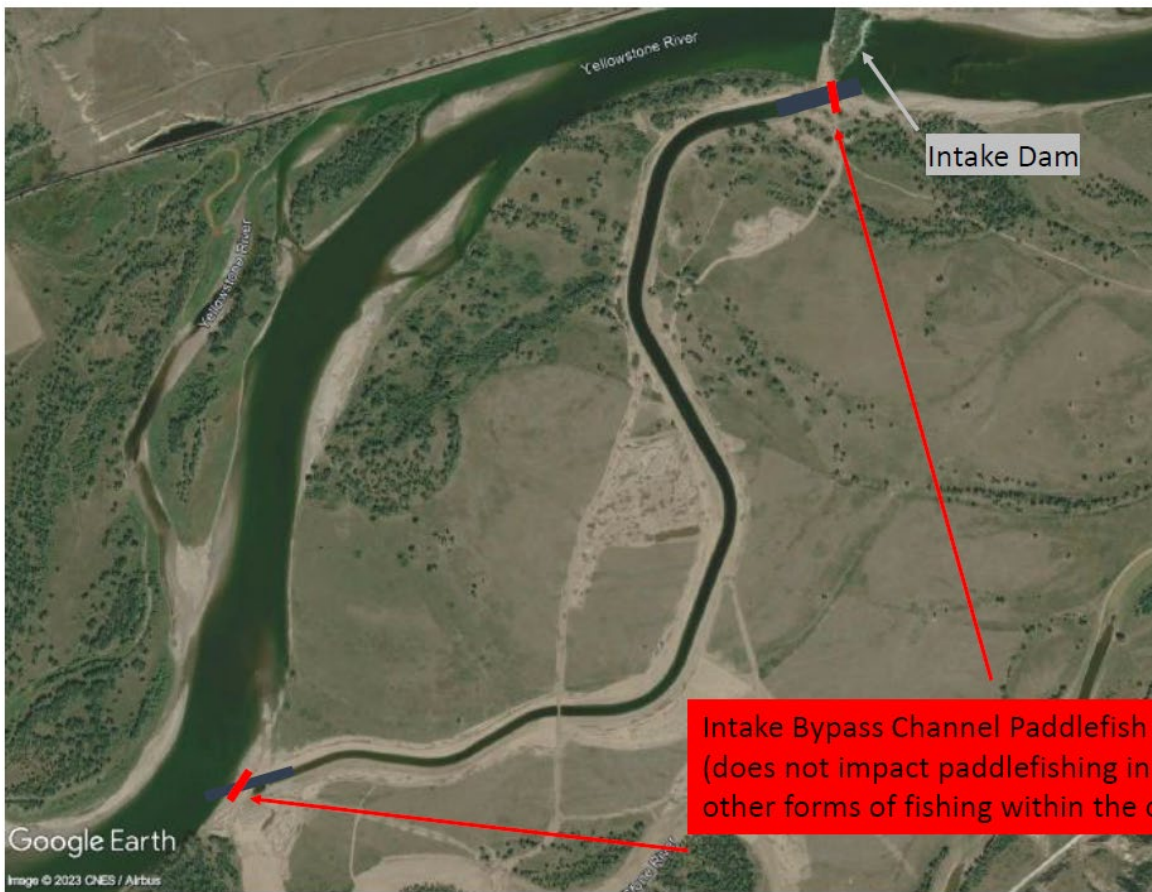


Paddlefish Boundaries – Yellowstone River

1. Tongue River and Sullivan Creek Confluences with Yellowstone River



2. Intake Bypass Channel Confluences with Yellowstone River



Intake Bypass Channel Paddlefish Closure Boundaries
(does not impact paddlefishing in the river or other forms of fishing within the channel)

Downstream end of Bypass Channel



(closed to paddlefishing)

(open to paddlefishing)

Intake Dam