

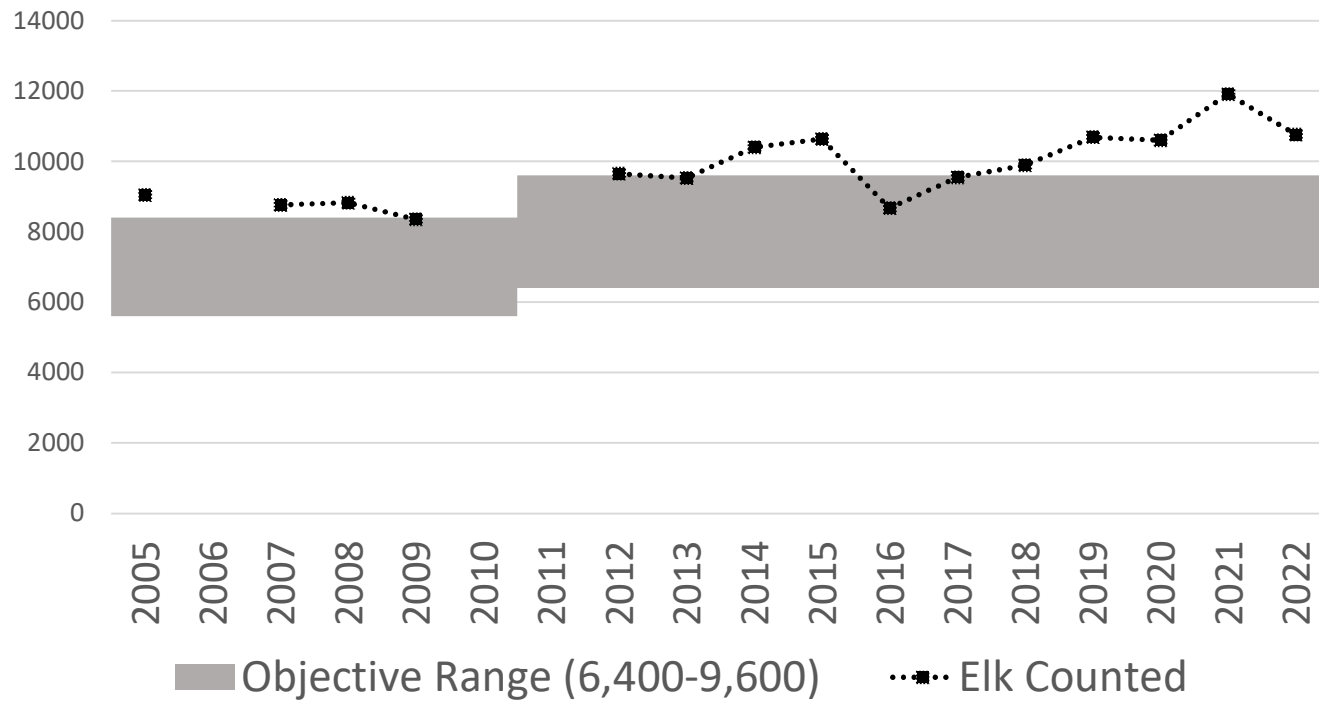
HD 322

- Current population objectives are expressed as a desired number of elk counted, and typically include a range around that value (+/-20%). The range accounts for anticipated variability in elk counts among years. In this HD, should FWP maintain the current form of objective (point value with fixed range) or should FWP consider alternative population objective forms, like using the long-term average (5 years, 10 years) +/- 20%, or some other approach to establish a population objective?
- Elk populations are classified into objective status using annual or biennial survey data. Because there is often variation among surveys, would it be more appropriate to use individual surveys or a 3-year average of surveys to determine objective status for this HD or would you recommend some other approach ?



HD 322

HD 322



HD 322

- The current population objective for HD 322 is 8,000 (range 6,800-9,200). Do you think the current population objective level should be maintained, increased, or decreased? If increased or decreased, what should the new range be?
- In HD 322, there are bull objectives to maintain at least 10 bulls:100 cows or 7% bulls observed in the post-season aerial trend surveys. Should there be bull objectives in this HD? If so, are the current bull objective appropriate?
- Are you satisfied with the current elk distribution in this HD? If not, would you suggest any specific objectives to address the distribution?
- What else does the Elk Management Plan need to include for this HD?

