

HD 170

The stated population objective for this HD from the 2005 Elk Management Plan is:

1. On public lands, maintain a small elk population capable of sustaining an annual harvest.
2. On private lands, maintain elk numbers at a level that provides for some public viewing and general enjoyment, but below population densities that result in significant game damage problems.

Since the 2005 Elk Management Plan was adopted, HD 132 was eliminated (2020) and former HD 132 was split among HDs 130, 141, and 170. Current HD 170 is comprised of primarily private land in the Flathead Valley.

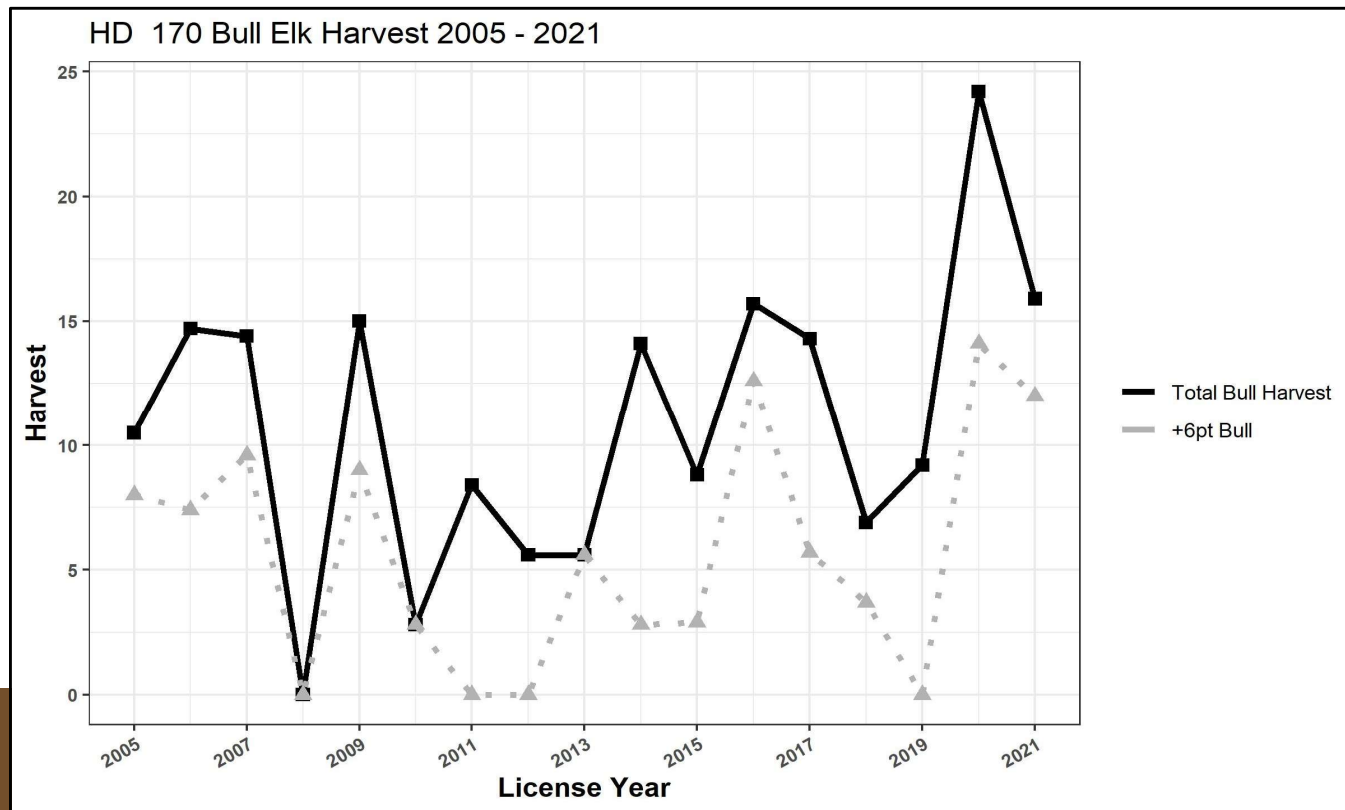
Surveys are not flown in this HD due to:

- Residential low-altitude flying constraints (high fence density)
- Dense conifer forest



HD 170

- Currently, FWP utilizes bull harvest data, and public feedback to evaluate elk population trends and to make regulation recommendations.



HD 170

- Do you think harvest (above) data appropriately represents elk population trend within this HD over time (increasing, stable, decreasing)?
- Are you comfortable with the data Region 1 is currently using?
- Is there other data FWP should use for elk management?
- In HD 170, there is no bull objective. Is this appropriate in this HD? If you would like to have a bull objective, what should it be?
- Are you satisfied with the current elk distribution in this HD? If not, would you suggest any specific objectives to address the distribution?
- What else does the Elk Management Plan need to include for this HD?

