

## Aquatic Invasive Species Early Detection, Monitoring, and Control Annual Report

**Abstract:** Aquatic invasive species (AIS) are non-native species capable of degrading natural resources, causing harm to water-based infrastructure, and diminishing recreational opportunities. The Montana Fish, Wildlife & Parks AIS Bureau conducts early detection surveys to identify new AIS populations, enabling containment or potential eradication. This report provides a summary of the 2025 sampling season's early-detection and survey activities related to AIS, undertaken by FWP and collaborative partners, along with updates on control and eradication projects.

### 2025 Report Objectives

- ▶ Provide results of AIS early detection efforts
- ▶ Foster a greater understanding of the threats of AIS to Montana's waters
- ▶ Encourage partners and others to sample, report, and look for AIS invaders
- ▶ Highlight eradication and control projects



Brian Hagan, FWP

FWP AIS early-detection technician, Scott Freeman, pulls in the plant rake to examine the aquatic plant community in a lake in northwest Montana.

The FWP AIS Bureau implements the Montana AIS Management Plan, encompassing AIS coordination, prevention, early detection, population monitoring, treatment and eradication projects, and outreach and education. The plan aims to mitigate the detrimental effects of AIS by preventing and managing AIS introduction, spread, and impact in Montana.

## Report Contents

Early Detection and Monitoring – Background .....	1
Early-Detection and Monitoring Methods .....	1
<i>Sampling Methods</i> .....	1
2025 AIS Sampling Efforts and Results .....	1
<i>New Detections in 2025</i> .....	1
<i>Dreissenid Mussel (Zebra and Quagga Mussels) Sampling Results</i> .....	2
<i>Sampling Locations and Intensity</i> .....	2
<i>Environmental DNA (eDNA) Sampling</i> .....	5
Current AIS Distributions in Montana .....	6
Aquatic Invasive Species Laboratory .....	8
Other Noteworthy Efforts .....	8
<i>Crayfish Research Collaboration</i> .....	8
<i>AIS Early Detection Trainings/Workshops</i> .....	9
AIS Control Efforts .....	9
<i>Beaver Lake Eurasian Watermilfoil Eradication</i> .....	10
<i>Nilan Reservoir Eurasian Watermilfoil Eradication</i> .....	10
<i>Lake Elmo Corbicula Clam Eradication</i> .....	11
<i>Flathead Lake Chinese Mystery Snail Control</i> .....	12
<i>Holland Lake Fragrant Waterlily Control</i> .....	12
<i>Slip and Slide Creek Ponds Curlyleaf Pondweed Eradication</i> .....	13
<i>Noxon Rapids and Cabinet Gorge Reservoirs Eurasian Watermilfoil Management</i> .....	14
<i>Pablo Reservoir Eurasian Watermilfoil Control</i> .....	15
Looking Ahead .....	16
Conclusion .....	16
Literature Cited .....	16
Appendix A. Map of Invasive Snails and Clams in Montana .....	A1
Appendix B. Map of Invasive Aquatic Plants in Montana .....	B1
Appendix C. FWP Regional Maps of AIS Sampling Locations and Intensity.....	C1
Appendix D. Plankton and eDNA Sampling Details (Intensity & Sampling Entity).....	D1

### Compiled and produced by:

**Craig McLane**

AIS Early-Detection Coordinator – AIS Bureau

**Jayden Duckworth**

AIS Environmental Scientist – AIS Bureau

**Ryan Callison**

AIS Environmental Scientist – AIS Bureau

[fwp.mt.gov](http://fwp.mt.gov)

**Keegan Effertz**

AIS Lead Lab Technician – AIS Bureau

**Stacy Schmidt**

AIS Environmental Scientist Supervisor – AIS Bureau

## Early Detection and Monitoring – Background

AIS pose significant economic, ecological, and recreational threats to Montana’s waters. The preservation of Montana's waters hinges on effective prevention measures to curb the introduction and spread of AIS. In cases where prevention fails, early detection is critical to prevent further spread. FWP initiated its statewide AIS early-detection and monitoring program in 2004. This program seeks to identify small or localized AIS populations, investigate suspicious reports, and analyze existing population trends. Surveys can result in eradication treatments or the formulation of long-term control and management strategies. FWP's survey initiatives encompass a range of AIS species including zebra and quagga mussels, Corbicula clams, New Zealand mudsnails, faucet snails, Eurasian watermilfoil, flowering rush, curlyleaf pondweed, and fragrant waterlily. Further details, including past reports, standard operating procedures for sampling, and management plans, can be accessed at <https://fwp.mt.gov/conservation/aquatic-invasive-species/reports>.

## Early-Detection and Monitoring Methods

To maximize the probability of early detection, FWP evaluates the risk of AIS introductions to waterbodies statewide. An annual work plan, coordinated with partners, guides these efforts, but remains adaptable due to the constantly evolving variables used to assess risk. Site prioritization depends on factors such as previous years' sampling efforts and detections, water calcium levels, water-quality data, angler-pressure data, boater-use data, and input from partners.

## Sampling Methods

To capture a diverse range of species, FWP utilizes a variety of survey methods. These methods include plankton nets, kick nets, dredges, benthic sleds, plant rakes, shoreline visual surveys, artificial substrate samplers, rock picking, mussel detection dogs, environmental DNA (eDNA), snorkeling, and scuba diving. A comprehensive description of Montana's survey methods is outlined in the AIS Field Sampling and Lab Operating Procedures (FWP, 2019). Additionally, the transfer of fish between hatcheries or water bodies can facilitate the spread of AIS. Certification for the sale or movement of fish is contingent upon passing an AIS inspection and fish health inspection for commercial, federal, and state hatcheries. The FWP Fish Health Laboratory collaborates closely with the FWP AIS Bureau to annually inspect all federal, state, and commercial hatcheries, as well as waterbodies used for wild fish stock transfers.

## 2025 AIS Sampling Efforts and Results

### New Detections in 2025

FWP tracks the distributions of AIS across Montana. FWP technicians, partners, and the public discover new populations each year. New detections in 2025 included aquatic plants and snail species, with no detections of dreissenid mussels or other high-risk bivalves. In 2025, new detections of AIS included the following locations:

- ▶ Big-eared radix (*Radix auricularia*)
  - Helena Valley Regulating Reservoir – Helena
- ▶ Curlyleaf pondweed (*Potamogeton crispus*)
  - Rattlesnake Reservoir – Billings
  - Dry Fork Reservoir – Chinook
- ▶ Eurasian watermilfoil (*Myriophyllum spicatum*)
  - Winter Harbor Pond – Fort Peck
- ▶ Faucet snail/Mud Bithynia (*Bithynia tentaculata*)
  - Salmon Lake – Seeley Lake

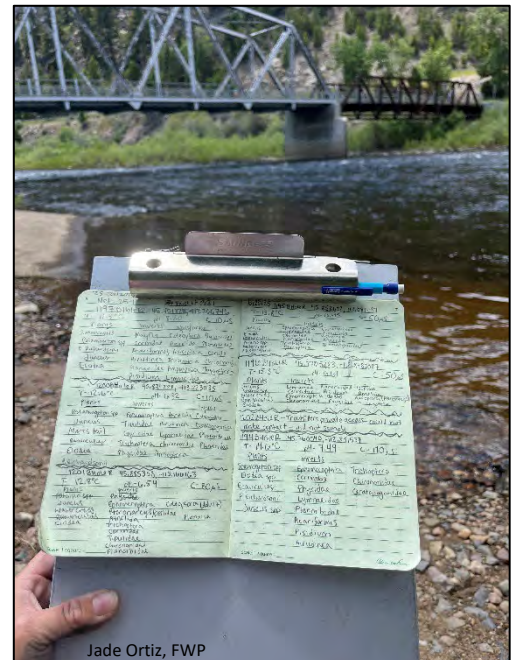


Figure 1. An early-detection technician makes notes on the aquatic community in the field to record later into FWP's digital data collection application.

- ▶ Fragrant waterlily (*Nymphaea odorata*)
  - Middle Foy Lake – Kalispell
- ▶ New Zealand mudsnails (*Potamopyrgus antipodarum*)
  - AMC Settling Pond #2 – Warm Springs
  - Beavertail Meadows Pond – Dillon
  - Clark Fork River (downstream of Nimrod Hot Springs) – Bearmouth
  - Five Mile Creek – Billings
  - Gallatin River (Cameron Bridge) – Belgrade
  - Nimrod Warm Springs – Bearmouth
  - Ruby River Reservoir – Alder
- ▶ Red-rim melania (*Melanoides tuberculata*)
  - Effluent of Chico Hot Springs – Chico
  - Nimrod Warm Springs – Bearmouth

### Dreissenid Mussel (Zebra and Quagga Mussels) Sampling Results

**No evidence of invasive mussels was detected in Montana in 2025.** Figure 2 illustrates the number plankton samples collected by each entity that were provided to the FWP AIS Early Detection Laboratory for microscopy analysis. In total, FWP and partners collected 3,198 plankton samples (2,394 – FWP, 804 – Partners) from Montana waters. FWP operates dedicated crews who conduct AIS sampling, but contributions from partners also play a crucial role in statewide sampling. FWP is committed to close collaboration with partners, including identifying and training new entities, to enhance AIS early detection efforts at the local level.

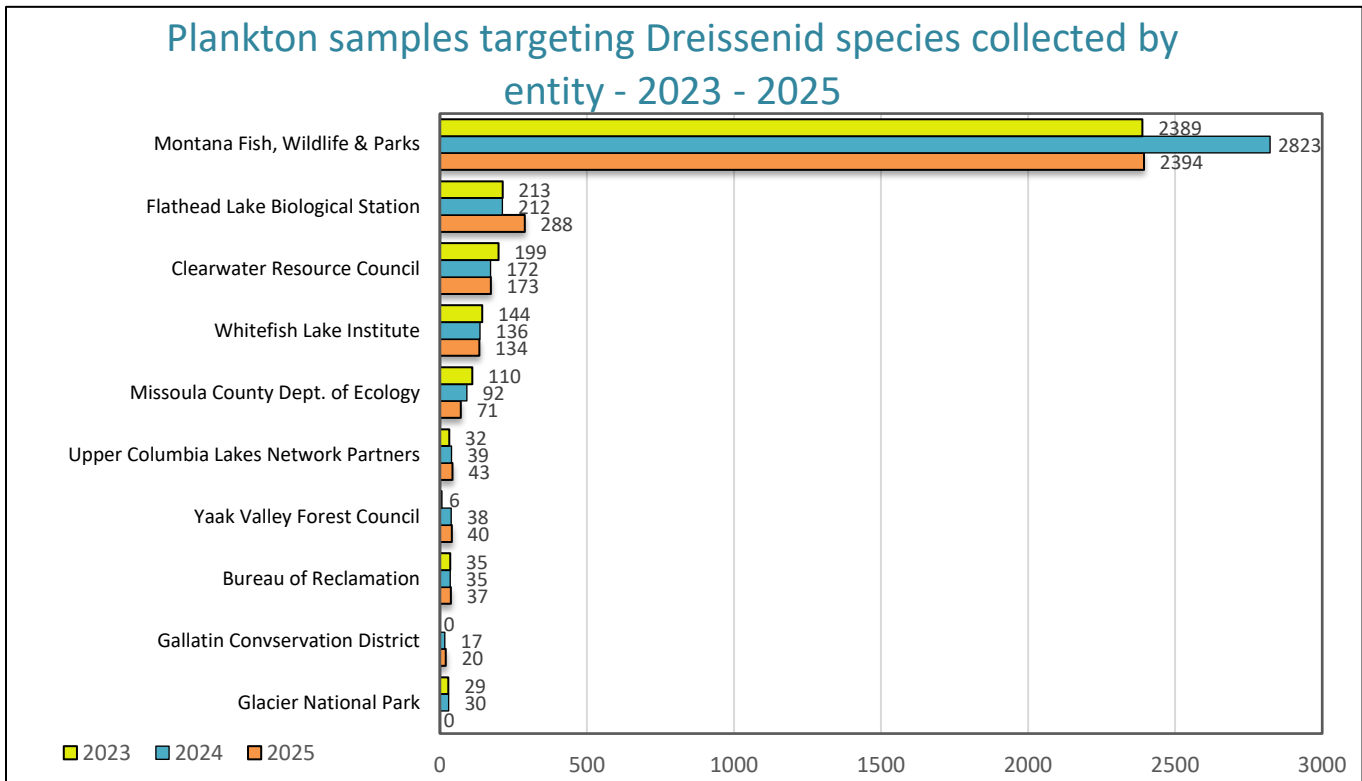


Figure 2. 2023-2025 AIS plankton sampling effort by all reported entities.

### Sampling Locations and Intensity

In 2025, FWP and partners surveyed over 313 waterbodies, with the majority undergoing comprehensive all taxa AIS surveys. Figure 3 displays the statewide locations and intensity of AIS sampling across the state by FWP and partners. Figure 4 displays the same information focusing on partners, highlighting areas where additional partner support could help strengthen local early-detection efforts. Specific details regarding individual waters are available in Appendix D, and can be downloaded through FWP’s GIS data page at <https://gis-mtftp.hub.arcgis.com>, or emailed by reaching out to Craig McLane, AIS early -detection coordinator ([cmclane@mt.gov](mailto:cmclane@mt.gov)).

2025 Plankton Net Survey Locations by FWP and Partners

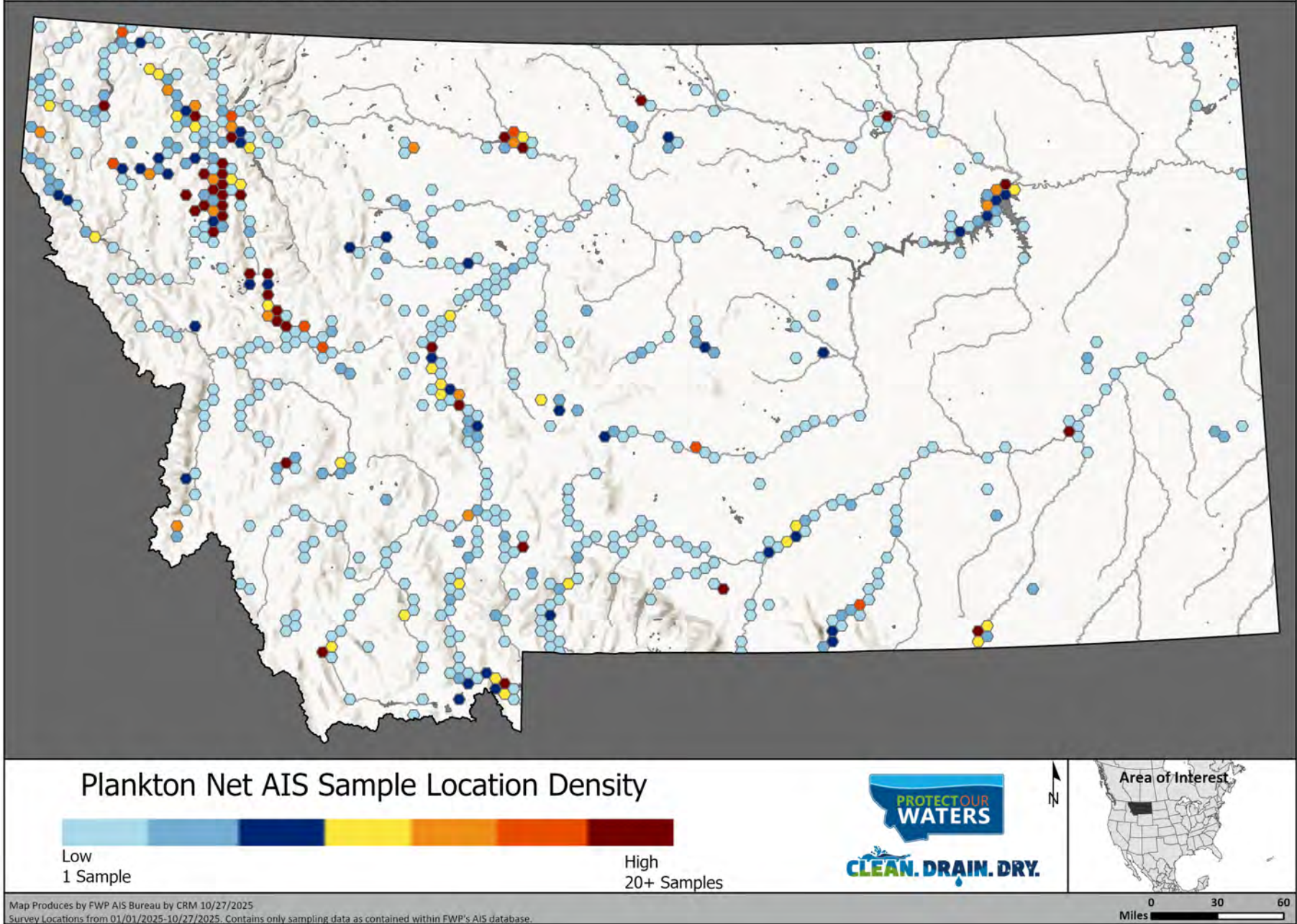


Figure 3. Map of FWP AIS plankton sampling intensity, 2025.

2025 Plankton Net Survey Locations by Partners

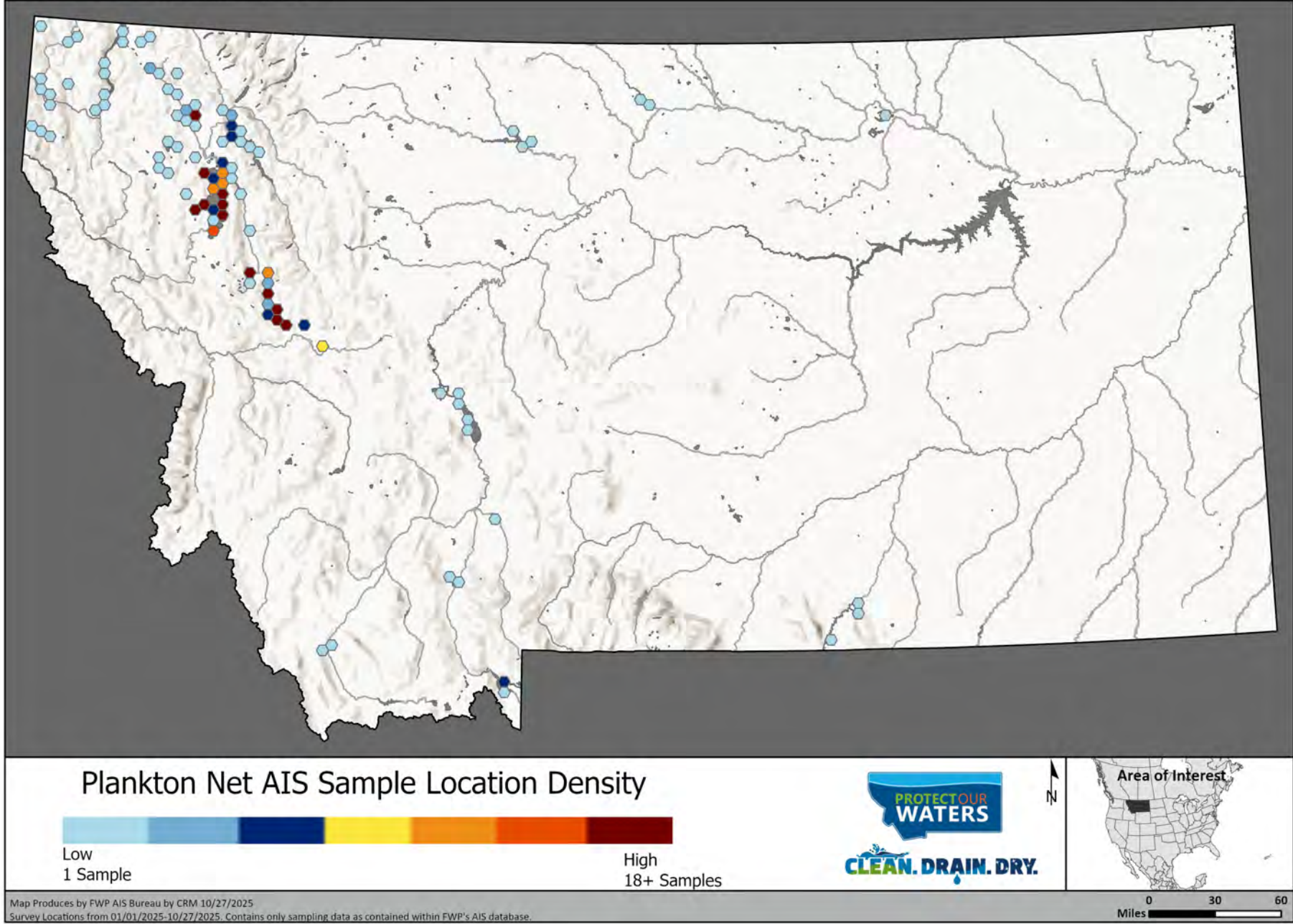


Figure 4. Mussel veliger sampling effort by partners, 2025.

## Environmental DNA (eDNA) Sampling

In 2023, FWP elevated the use of eDNA to a programmatic level. Employing molecular technology, eDNA sampling detects DNA for a target species in a waterbody. Per agency's established standard operating procedures, a positive eDNA result alone will not confirm the presence of invasive species but does trigger more intensive sampling to try to confirm the presence of an AIS. This additional tool enhances the state's capacity to detect, respond to, contain, and control new populations. The collective effort between partners and FWP resulted in 709 eDNA samples (252 - FWP, 467 - Partners) targeting dreissenid species in 49 waters (Figure 5), with additional 15 samples targeting other AIS species such as Corbicula clams in Lake Elmo and New Zealand mudsnails in state hatcheries. All sample results were negative for dreissenid species and other AIS.

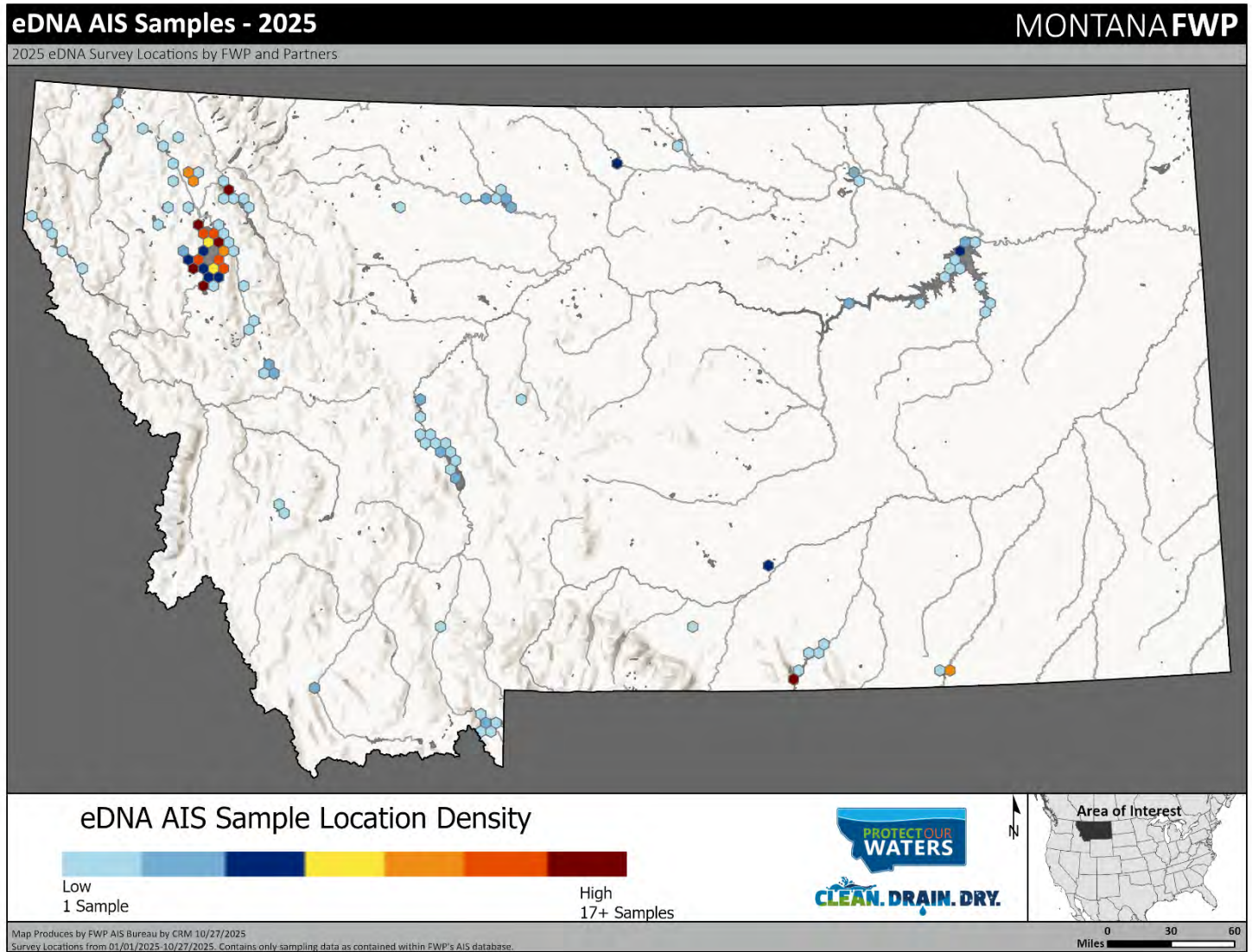


Figure 5. Environmental DNA (eDNA) sampling in Montana for 2025.

# Current AIS Distributions in Montana

The list below documents the known locations of AIS. Those waters with an asterisk and red-highlighting are new detections in 2025. For maps of current AIS locations in Montana, refer to Appendix A & B.

## Animal AIS Distribution in Montana

### Big-eared radix (*Radix auricularia*)

- Clark Fork River
- Bitterroot River
- Ennis Lake
- Elk Grove Community Pond
- Flathead Lake
- Harpers Lake
- Helena Valley Regulating Reservoir\*
- Lake Helena
- Lowell Pond
- Moose Lake
- Ninepipe Reservoir
- Pablo Reservoir
- Pond 1 (Canyon Ferry WMA)
- Private Pond in Paradise Valley\*
- Whistler's Pond - Lee Metcalf NWR
- Willow Creek Reservoir (Harrison)

### Chinese mystery snail (*Cipangopaludina chinensis*)

- Flathead Lake

### Corbicula clam (*Corbicula fluminea*)

- Lake Elmo

### Mud Bithynia/faucet snail (*Bithynia tentaculata*)

- Ashley Creek
- Blanchard Lake (Near Whitefish)
- Browns Lake
- Flathead Lake
- Georgetown Lake
- Lake Frances
- Lost Loon (Coon) Lake
- McWenegar Slough
- Salmon Lake\*
- Smith Lake
- Upsata Lake
- Whitefish Lake (unverified by FWP AIS Bureau)

### Magnificent bryozoan (*Pectinatella magnifica*)

- Smith Lake
- Bull Lake

### New Zealand mudsnails (*Potamopyrgus antipodarum*)

- AMC Settling Pond #2\*
- Beaverhead River
- Beavertail Pond
- Big Sheep Creek
- Bighorn River
- Bitterroot Fish Hatchery Ponds
- Blacktail Meadows Pond\*
- Bluewater Creek
- Bluewater Fish Hatchery
- Bozeman Creek
- Clark Canyon Reservoir
- Clark Fork River – Downstream of Nimrod Warm Spring\*
- Darlington Ditch 1
- DePuys Spring Creek
- Ennis Lake
- Five Mile Creek\*
- Gallatin River – Cameron Bridge\*
- Gardner River
- Hauser Reservoir
- Hell Roaring Canyon Creek
- Amend Park Canal, Billings
- Jefferson River
- Madison River
- Marias River (below Tiber Dam)
- Mill Willow Bypass
- Missouri River (below Holter Dam)
- Mitchell Slough
- Muddy Creek
- Nimrod Warm Springs\*
- Nelson Spring Creek
- Odell Creek
- Pioneer Park – Billings
- Poindexter Slough
- Quake Lake
- Rainbow Dam Reservoir
- Red Rock River
- Roe River
- Rehse Pond #2
- Rehse Pond #3
- Ruby River
- Ruby River Reservoir\*
- Silver Bow Creek
- Spring Meadow Lake
- Upper Holter Lake
- Wayne Edsall Pond
- Yellowstone River
- Yellowtail Afterbay Reservoir

### Red-rim melania snail (*Melanooides tuberculata*)

- Beaverhead River
- Chico Hot Springs Effluent\*
- Gardner River
- Nimrod Warm Springs\*
- Powder River
- Warm Spring Ditch near Beaverhead River

### Southern plains crayfish (*Procambarus simulans*)

- Miles City Fish Hatchery

## Plant AIS Distribution in Montana

- Beaverhead River
- Big Elk Creek
- Bitterroot River
- Bozeman Creek
- Cabinet Gorge Reservoir
- Canyon Ferry Reservoir
- Clark Canyon Reservoir
- Clark Fork River
- Darlington Ditch
- Deadman's Basin
- **Dry Fork Reservoir\***
- East Canyon Ferry Canal
- East Gallatin River
- Ennis Lake
- Ester Lake
- Fifth Street Pond (Libby)
- Flathead Lake
- Flathead River
- Fort Peck Lake
- Frog Pond
- Gallatin River
- Haskill Creek
- Hauser Reservoir
- Hebgen Lake

### Curlyleaf pondweed (*Potamogeton crispus*)

- Helena Valley Regulating Reservoir
- Holter Reservoir
- Horte Reservoir
- Jefferson River
- Jones Pond, Bozeman
- Judith River
- Kicking Horse Reservoir
- Kootenai River
- Lake Helena
- Lower Crow Reservoir
- Lower Glaston Lake
- Madison River
- Marias River
- Mission Reservoir
- Missoula Kids Pond
- Missouri River
- Mitchell Slough – East Channel
- Mitchell Slough – Middle Channel
- Musselshell River
- Newlan Creek
- Newlan Reservoir
- Ninepipe Reservoir
- Noxon Rapids Reservoir
- Pablo Reservoir
- Pond 1 – Canyon Ferry
- Pond 2 – Canyon Ferry
- Pond 3 – Canyon Ferry
- Pond 4 - Canyon Ferry
- Post Creek
- Quake Lake
- Rainbow Dam Reservoir
- **Rattlesnake Reservoir\***
- Ross Fork Creek
- Sheep Creek
- Shields River
- Slip and Slide Creek (Ponds)
- Smith River
- The Lakes Subdivision Pond
- Thompson Falls Reservoir
- Tiber Reservoir
- Triangle Pond
- Tongue River Reservoir
- Upper Holter Lake
- Wayne Edsall Pond
- West Canyon Ferry Canal
- Whistler's Pond – Lee Metcalf NWR

### Eurasian watermilfoil (*Myriophyllum spicatum*)

- Beaver Lake
- Cabinet Gorge Reservoir
- Clark Fork River (below Thompson Falls Reservoir)
- Fort Peck Dredge Cuts
- Fort Peck Lake
- Fort Peck Powerhouse Tailrace
- Fort Peck Trout Pond
- Jefferson River
- Jefferson Slough
- Madison River (below I-90)
- Missouri River (above Canyon Ferry Reservoir)
- Missouri River (below Fort Peck Dam)
- Nelson Dredge
- Nilan Reservoir
- Noxon Rapids Reservoir
- Pablo Reservoir
- Pond 4 - Canyon Ferry
- Thompson Park Pond
- Toston Reservoir
- **Winter Harbor Pond\***

### Flowering rush (*Butomus umbellatus*)

- Cabinet Gorge Reservoir
- Church Slough
- Clark Fork River
- Fennon Slough
- Flathead Lake
- Flathead River
- Noxon Rapids Reservoir
- Pablo Reservoir
- Thompson Falls Reservoir

### Fragrant waterlily (*Nymphaea odorata*)

- **Beaver Lake – Eradicated**
- Blanchard Lake (near Whitefish)
- Blanchard Lake (Clearwater River)
- Browns Lake
- Clearwater River
- Duck Lake (NW MT)
- Elbow Lake
- Fennon Slough
- Harpers Lake
- Hidden Lake
- Holland Creek
- Holland Lake
- Lake Alva
- Lake Inez
- Lake Mary Ronan
- Lindbergh Lake
- Loon Lake
- McCaffery Lake
- **Middle Foy Lake\***
- **Milnor Lake\***
- Morgenstern Pond
- Niemi Pond

*\*New Detection Location in 2025*

- Placid Lake
- Salmon Lake
- Savage Lake
- Seeley Lake
- Upsata Lake
- Wolff Pond

Spiny water nymph (*Najas marina*)

- Frenchtown Pond

Yellow Floating Heart (*Nymphaoides peltata*)

- Private pond – Belgrade
- Private pond - Paradise Valley

## Aquatic Invasive Species Laboratory

FWP operates the AIS early detection laboratory in Helena, MT, and a satellite lab in Kalispell, MT. The labs process plankton samples for FWP crews and partners in Montana and the Missouri River Basin (MRB) states and provides confirmatory services for samples received from outside the basin. Staff focus on identifying Dreissenid and Limnoperna mussel veligers (larvae) in plankton samples. Figure 6 illustrates the annual sample volume processed by the labs since 2005. The labs undergo regular internal and external quality control testing to ensure accuracy. Sample processing turnaround times for in-state samples averaged 18 days for high-priority samples (priority 1) and 26 days overall (Table 1). Timely sample analysis is critical for early detection and facilitates a rapid response to verify, contain and address new AIS populations.

Table 1. Current 2025 average turnaround times for MT waters based on risk categories. Some results still pending.

	Turnaround Time to Date (Average Days)	Total # Samples to Date
Out-of-state	29	437
In-State Totals	26	3,168
In-State details by priority level (1-high; 10-low)		
1	19	892
2	27	996
3	34	318
4	29	125
5	28	217
6	32	341
7	28	33
8	9	14
9	36	26
10	-	4

## Other Noteworthy Efforts

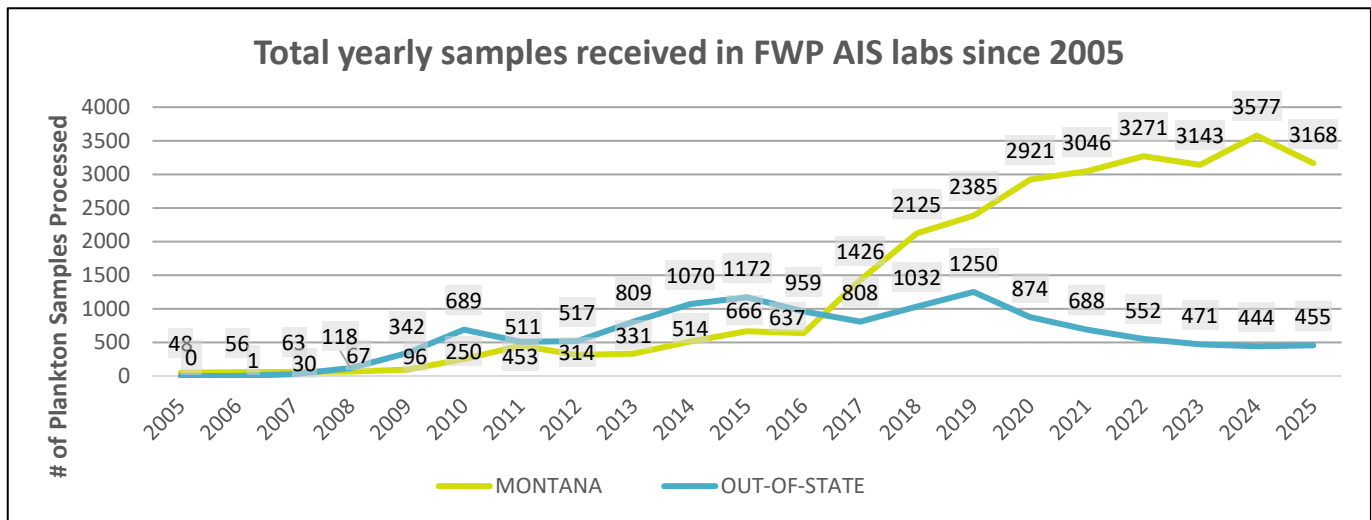


Figure 6. Details of plankton samples processed by FWP (in-state and out-of-state sampling) during the life of the MT AIS program (2005-Present)

## Crayfish Research Collaboration

FWP continues to collaborate with Montana State University researchers to improve understanding of crayfish distribution, status, and ecological role in Montana waters. Recent research suggests that crayfish in Montana may not be native in portions of the state, highlighting the need to reevaluate long-standing assumptions about crayfish distributions and management (Kennedy & Adams 2025). This work builds on statewide sampling conducted by “The Cray Team” (a collaborative sampling effort with the US Forest Service and other partners) and

ongoing analyses of crayfish distribution patterns in Montana (Adams et al. In prep). Together, these efforts may help inform future monitoring priorities and management decisions related to crayfish and AIS.

### AIS Early Detection Trainings/Workshops

Partner and public involvement is an important part of AIS early detection. FWP provides training opportunities to increase public involvement in AIS identification, early detection and survey. 2025 AIS survey and training workshops included:

Date	Event Details	Location
January 30	Montana Weed Control Association Annual Conference – AIS plant ID workshop (Hosted by MWCA)	Great Falls
March 4-6	AIS Identification Workshop at Missoula County’s AIS Short Course (Hosted by Missoula County Department of Ecology)	Missoula
April 24	AIS training for Whitefish Lake Institute’s volunteers (Hosted by Whitefish Lake Institute)	Kalispell
May 12-15	AIS Bureau sampling training	Helena
May 19-22	AIS early detection staff training/blitz	Fort Peck
June 2	Early detection training (Co-hosted with Flathead Lake Biological Station)	Flathead Lake
Sep 16-17	Lake Elmo citizen science event for elementary/middle School (Hosted by Central and Eastern Montana Invasive Species Team)	Billings

### AIS Control Efforts

FWP is committed to preventing the establishment and spread of AIS by responding quickly and decisively when new populations are detected. Rapid response efforts focus on new or localized infestations where control or eradication is most feasible and cost-effective. By applying science-based risk assessments and leveraging partnerships, FWP maximizes limited resources to achieve the greatest possible protection for Montana’s waters and reduce potential long-term AIS impacts. The following sections highlight priority control efforts led by FWP and projects where FWP provides support for AIS control activities.



Figure 7. An FWP dive team member examines individual plants to ensure they are native watermilfoil, like pictured here, and not the invasive Eurasian watermilfoil. Close examination is often necessary to distinguish the two species.



### Beaver Lake Eurasian Watermilfoil Eradication

In 2025, FWP continued efforts to eradicate Eurasian watermilfoil (EWM) in Beaver Lake in northwest Montana. Since the plant was first detected in 2011, FWP, the City of Whitefish, and the Whitefish Lake Institute have worked diligently to eliminate the infestation and prevent spread within the lake and nearby waters.

The FWP Dive Team conducted four shoreline surveys during the summer of 2025 (Figure 7). Staff also collected approximately 30 plants for genetic testing to verify invasive EWM and native northern watermilfoil populations. Results indicate invasive EWM plants are isolated to the immediate boat ramp area.

During the final survey of the year, genetic testing verified isolated EWM plants adjacent to the boat ramp and in a small nearby shoreline area where EWM was intermingled with native submerged and emergent vegetation. Crews removed all EWM from the area but anticipate possible regrowth in the area. This bed may be the source of recurring detections near the boat ramp. Complete removal will be necessary for successful eradication at Beaver Lake and follow-up surveys and removal will be conducted in 2026.



### Nilan Reservoir Eurasian Watermilfoil Eradication

In October 2021, FWP identified a small population of EWM in Nilan Reservoir, situated approximately 15 miles west of Augusta, MT, along the Rocky Mountain Front. FWP promptly initiated a rapid response eradication treatment. In November 2021, FWP curtained off the bay from the rest of the reservoir to minimize water exchange and applied fluridone to the entirety of the bay. A retreatment of the bay and adjacent area took place in August 2022. Crews conducted surveys along the entire shoreline in 2022 and removed isolated plants along the east and north outlets.



Lauren Karnopp, FWP

Figure 8. FWP staff systematically snorkel survey a bay for any of the invasive Eurasian watermilfoil. No plants were found in 2025.

In 2023, the FWP Dive Team revisited each location and surveyed both areas where treatments were conducted (Figure 8). No EWM was found in the lake in 2023 and in 2024 divers found and removed a single plant adjacent to the treated area. No invasive plants were found in 2025 during two survey events. Low reservoir levels contributed to the success of this project allowing for isolated EWM populations to be effectively treated (Figure 9). The reservoir remained at low levels for the entirety of the summer of 2025 and will remain throughout most of the winter.



Craig McLane, FWP

Figure 9. A significant low-water year on Nilan Reservoir led to isolation of any areas where Eurasian watermilfoil was found previously.



## Lake Elmo Corbicula Clam Eradication

FWP staff identified the first known *Corbicula* clam (*Corbicula fluminea*) population in Montana at Lake Elmo during an AIS monitoring workshop in June 2019. In response, FWP dewatered the lake in 2021 to eradicate the clams and carry out site improvements. During the dewatering, FWP undertook fisheries habitat enhancements and upgraded the park with new fishing jetties, an outlet control structure, and walking paths. The irrigation district diverted water back into the lake in April 2022. In 2023, 2024, and 2025, FWP staff conducted intensive sampling for clams using ponar dredges, benthic sleds, and eDNA. (Details of 2025 sampling can be seen in Figure 10.) No evidence of live clams has been detected since the dewatering in 2021 suggesting possible eradication.

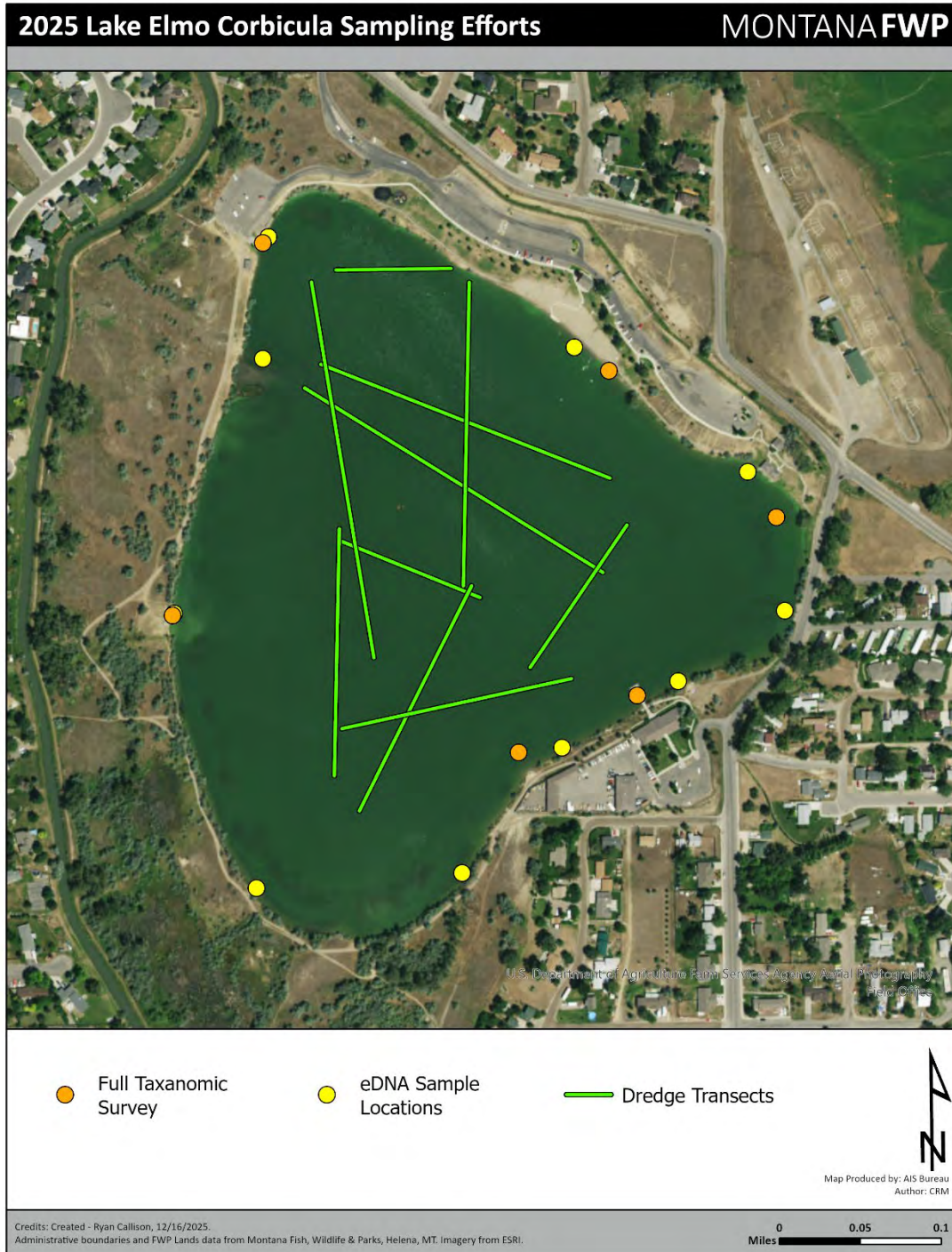


Figure 10. Survey efforts on Lake Elmo in 2025. Efforts included full taxonomic surveys, benthic dredge transects, and eDNA sampling.



## Flathead Lake Chinese Mysterysnail Control

In April 2024, FWP staff discovered live Chinese mystery snails at Finley Point on Flathead Lake. This finding followed the discovery of shells by an FWP early detection technician and a public report submitted through iNaturalist during the previous two years. As lake levels began to rise in 2024, approximately a dozen live snails were collected along the shoreline, confirming the presence of a reproducing population.

In 2025, FWP continued annual surveys and removal efforts with support from Confederated Salish and Kootenai Tribes AIS staff (Figure 11). To date, snails have not been detected in other areas of the lake, suggesting the infestation may be localized to the Finley Point area. However, a nearby private marina may serve as a refuge during annual water drawdowns due to its ability to retain water. FWP will continue lake-wide surveys and work with landowners and tribal partners to identify and suppress this population.



Figure 11. FWP and Confederated Salish and Kootenai Tribe staff walk the shoreline near Finley Point State Park to delineate and hand remove any Chinese mysterysnails in April 2025.



## Holland Lake Fragrant Waterlily Control

Montana Fish, Wildlife & Parks remains actively engaged in collaboration with the U.S. Forest Service and Missoula County to control fragrant waterlily in Holland Lake. Isolated patches are systematically removed to prevent further expansion within the lake. Removal areas are showing signs of reduced area and abundance. Several sizable patches persist in the bays and the outlet area (Figure 12) that will likely require future herbicide applications for eradication. Additionally, the population appears to be more widely distributed in the creek immediately downstream of the lake's outlet and USFS efforts are focused on containing the plants in that area. Given the extensive growth across the lake, this project is ongoing and is focused on containment and localized suppression until a comprehensive eradication or management plan is developed by USFS and the Missoula County.



Figure 12. Carley Chapman and Paul Bramblett pose for a quick photo at Holland Lake before resuming removal efforts to contain the fragrant waterlily in a highly infested bay. September 2025.



### Slip and Slide Creek Ponds Curlyleaf Pondweed Eradication

The USFS acquired property featuring three small reservoirs situated in the Slip and Slide Creek drainage, a tributary of the Yellowstone River near Gardiner, MT. Concerned about potential invasive species, USFS requested FWP to survey the reservoirs in 2019 and a well-established curlyleaf pondweed population was identified in all three ponds. Classified as high-risk for dam failure, the USFS drained the ponds in 2020 and 2021 to address the dam risk and to eradicate the curlyleaf pondweed. Dams were removed in 2022 and 2023, and an herbicide treatment was conducted to target remaining curlyleaf pondweed. FWP staff annually surveys the creek and impounded area down to the confluence with the Yellowstone River. To date, no additional plants have been discovered below the historical ponds but curlyleaf pondweed persists along the creek areas between the historical ponds and in beaver pond impoundments (Figure 13). USFS recently initiated discussions on next steps to determine what can be done to eradicate the population.

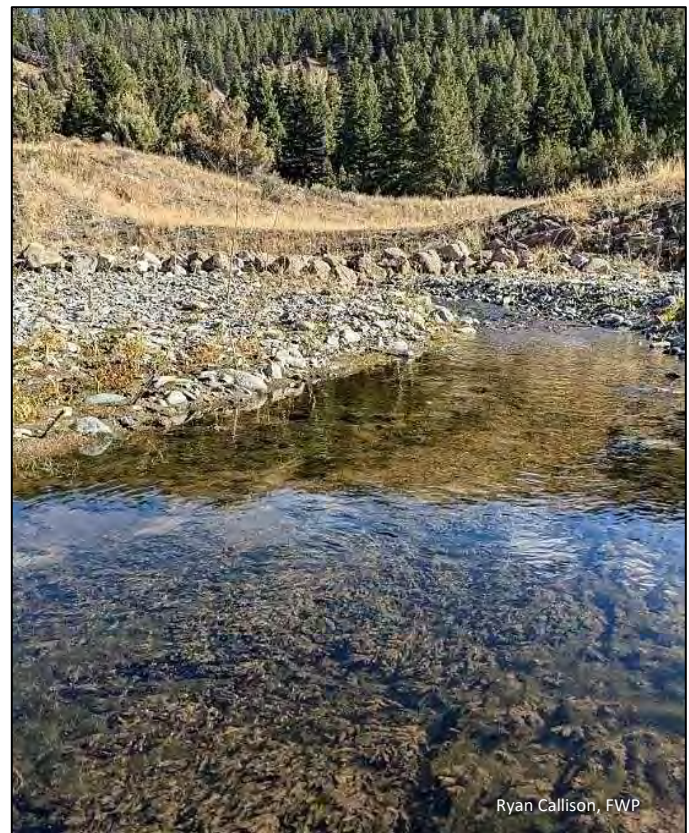


Figure 13. Curlyleaf pondweed persists in the creek between the historical pond and impoundments.



## Noxon Rapids and Cabinet Gorge Reservoirs Eurasian Watermilfoil Management

The Sanders County Aquatic

Invasive Species Task Force, working closely with FWP, conducts targeted management of EWM in Noxon Rapids Reservoir and Cabinet Gorge Reservoir. Treatments were focused near boat ramps, docks, and other high-use recreation areas to reduce the risk of spread to other waters and preserving recreational access. In 2025, using site-specific surveys and mapping provided by FWP (Figure 14), the task force contracted an herbicide treatment when EWM densities reach critical levels. The task force followed the application with 6-week post treatment monitoring survey to gauge effectiveness and inform follow-up actions. All work is done under established permits and best-management protocols to minimize impacts to non-target plants, water quality, and recreational users. This resulted in successful in-season control of EWM within both reservoirs (Figure 15).



Figure 14. Brian Hagan (left) and Scott Freeman (right) take a break from mapping Eurasian watermilfoil beds on Noxon Rapids Reservoir during FWP's pretreatment survey in 2025.

This year, FWP performed reservoir-wide surveys to map the current EWM locations and densities and to track abundance within the reservoirs over time. Combined with regular watercraft inspections, reporting, and early-detection surveys, this collaborative program aims to protect public access, reduce EWM spread, and preserve the long-term ecological and recreational values of both reservoirs.

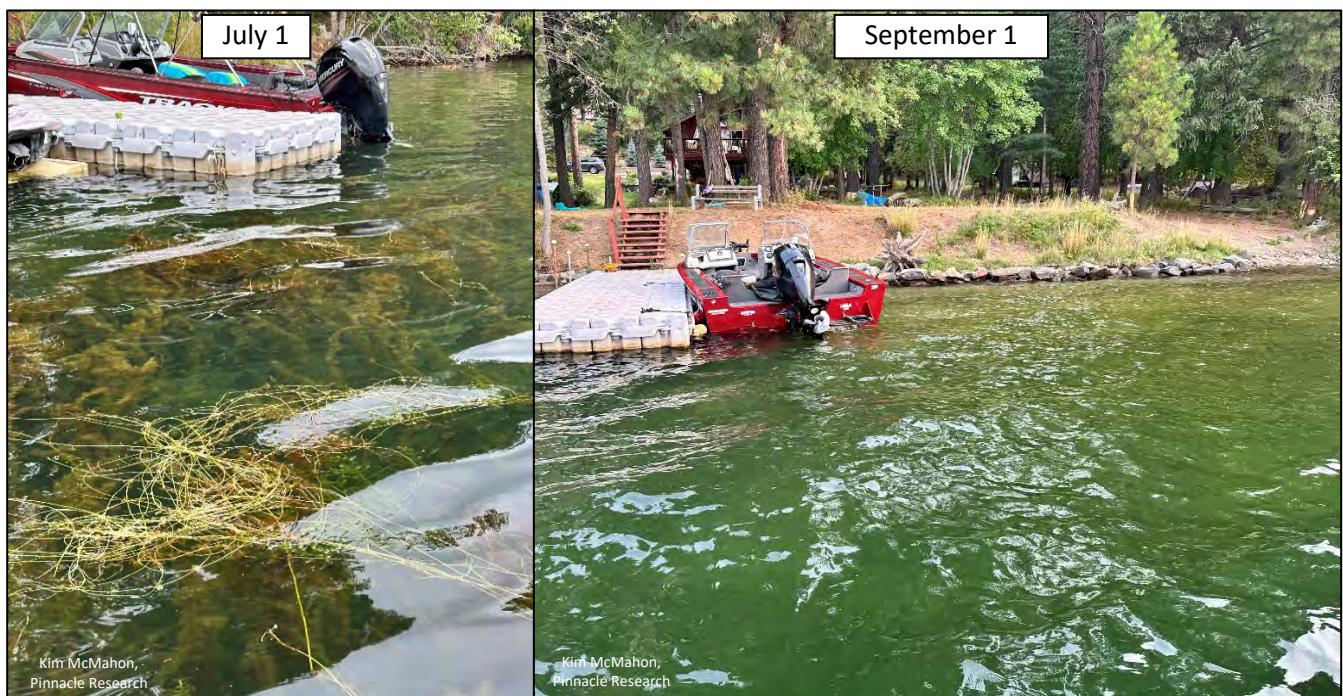


Figure 15. The Sanders County Aquatic Invasive Plants Task Force aims to reduce annual growth of Eurasian watermilfoil near high-use areas such as boat ramps, docks, and recreation areas such as shown in these before and after photos at this shoreline dock. The goal is to reduce spread and maintain recreation access.



## Pablo Reservoir Eurasian Watermilfoil Control

FWP field technicians discovered EWM in Pablo Reservoir the summer of 2022. In subsequent years, Confederated Salish and Kootenai Tribes (CSKT) and US Fish and Wildlife Service (USFWS) have performed additional delineation surveys and began planning for an herbicide treatment to suppress this population and prevent spread to other waters in the valley. Pablo Reservoir experiences a drawdown due to irrigation use and hits its lowest elevation in September. This offers a small window to experiment with herbicide applications on dewatered lake beds (Figure 16). In September 2025, CSKT and USFWS, with additional support through Montana Invasive Species Council and FWP, were able to treat approximately 277 acres of EWM. Applications occurred with ground and aerial methods and control efficacy will be examined in 2026.



*Figure 16. Pablo Reservoir Eurasian watermilfoil infestation during the late summer drawdown. This drawdown provides a window to treat Eurasian watermilfoil while exposed.*

## Looking Ahead

Fish, Wildlife & Parks consistently assesses AIS early detection and monitoring efforts to identify opportunities for enhancing program efficacy and efficiency. These ongoing improvements contribute to more effective sampling efforts, strengthened partnerships, enhanced data collection, improved sampling handling, and more effective AIS eradication and control. The FWP AIS early detection staff aims to:

- ▶ Continue to lead state and regional AIS early detection and monitoring coordination with state and regional partners.
- ▶ Evaluate current data collection methods to determine the most effective way to collect, house, and maintain early detection sampling data.
- ▶ Evaluate ways to expand partner all-taxa AIS survey efforts.
- ▶ Support the increased use of public reporting of potential AIS through avenues such as iNaturalist, Montana Natural Heritage Program, public events, and workshops.
- ▶ Revise FWP's early detection and sampling protocol. Efforts began in 2025 but were not completed. FWP plans to finalize these revisions in the spring of 2026
- ▶ Revise FWP's AIS laboratory protocols to current best practices. Efforts began in 2025 but were not completed. FWP plans to finalize these revisions in the spring of 2026.
- ▶ Explore the potential programmatic use of LAMP eDNA technology.



Jade Ortiz, FWP

Figure 17. FWP staff, Ryan Callison and Ian Uland, troubleshoot a broken-down FWP truck—an illustration of the extensive miles logged on program vehicles during the field season while conducting AIS early detection surveys across Montana's vast geographic area.

## Conclusion

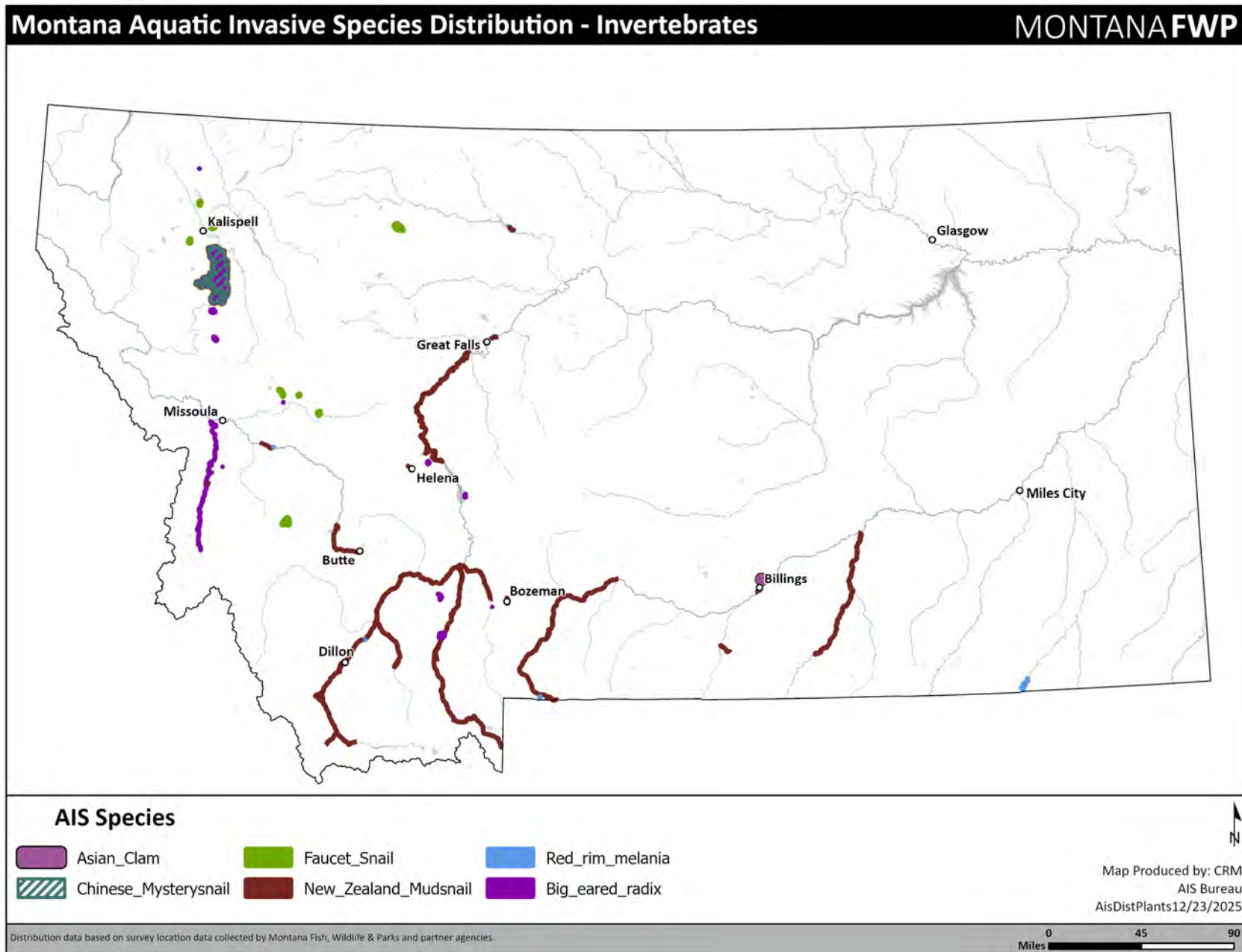
Montana Fish, Wildlife & Parks and collaborative partners are enhancing effectiveness and expanding capacity to detect new AIS populations, impede the spread of existing AIS, and, where feasible, eradicate populations. These efforts support the implementation of the statewide AIS Management Plan and protect the state from the impacts of AIS. These efforts significantly increase the probability of detecting new AIS populations before they establish or extend beyond current boundaries. By limiting the establishment or spread of AIS, containment and potential eradication become feasible. The vigilant survey and control efforts for AIS not only save the State of Montana time and money but also safeguard its aquatic resources and infrastructure from the impacts of AIS for the people of Montana and for future generations.

## Literature Cited

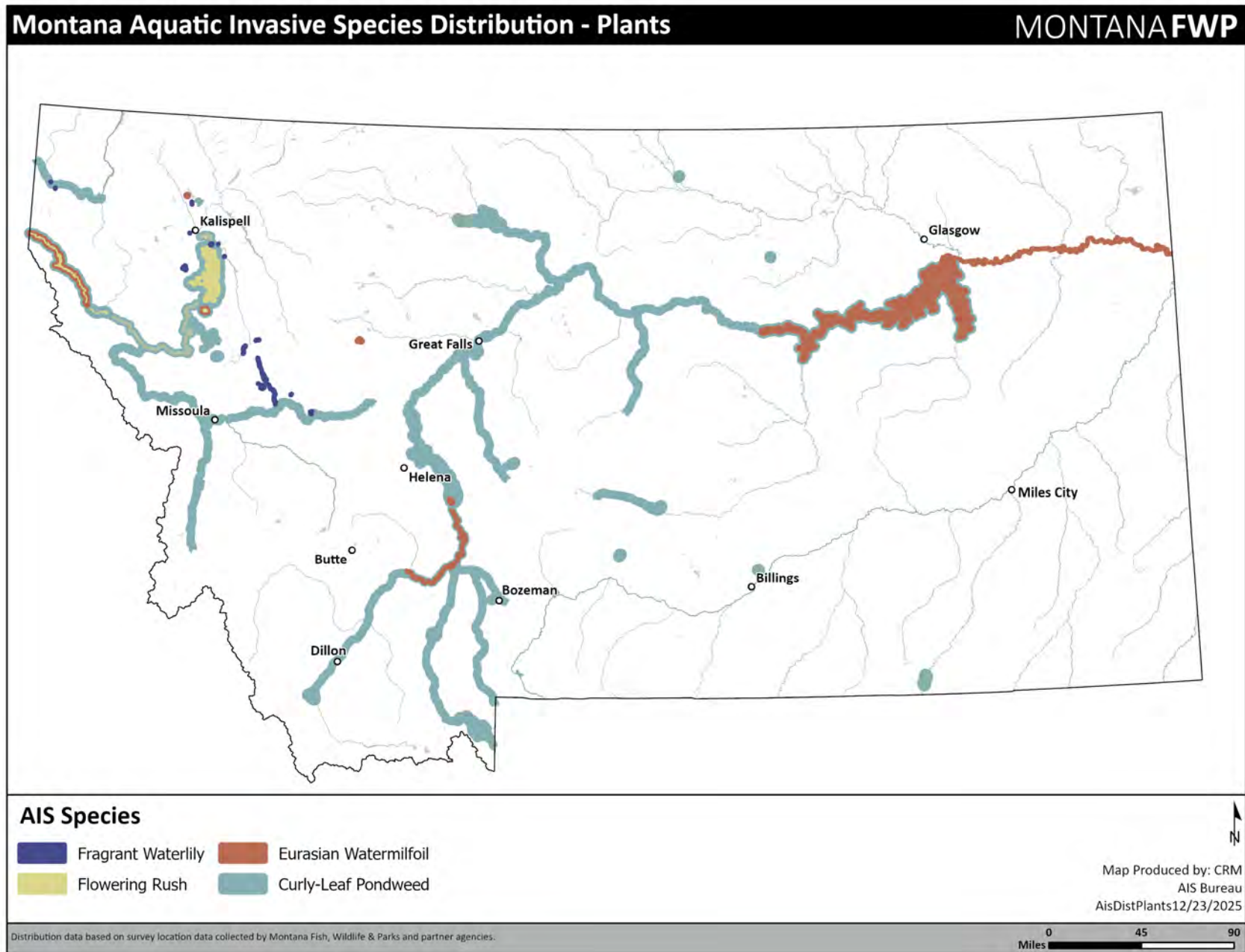
Montana Fish, Wildlife & Parks. (2019). *Aquatic Invasive Species Management Program Field Sampling and Laboratory Standard Operating Procedures*. Fish, Wildlife, & Parks, Aquatic Invasive Species Bureau, Helena.

Kennedy, Hampton L.; Adams, Susan B. 2025. Interdisciplinary Approaches Improve Understanding of Cryptogenic Species: A Historical Case Study of Crayfish in Montana, USA . *WIREs Water*. 12(2): 1-15. <https://doi.org/10.1002/wat2.70014>.

# Appendix A. Map of Invasive Snails and Clams in Montana



# Appendix B. Map of Invasive Aquatic Plants in Montana

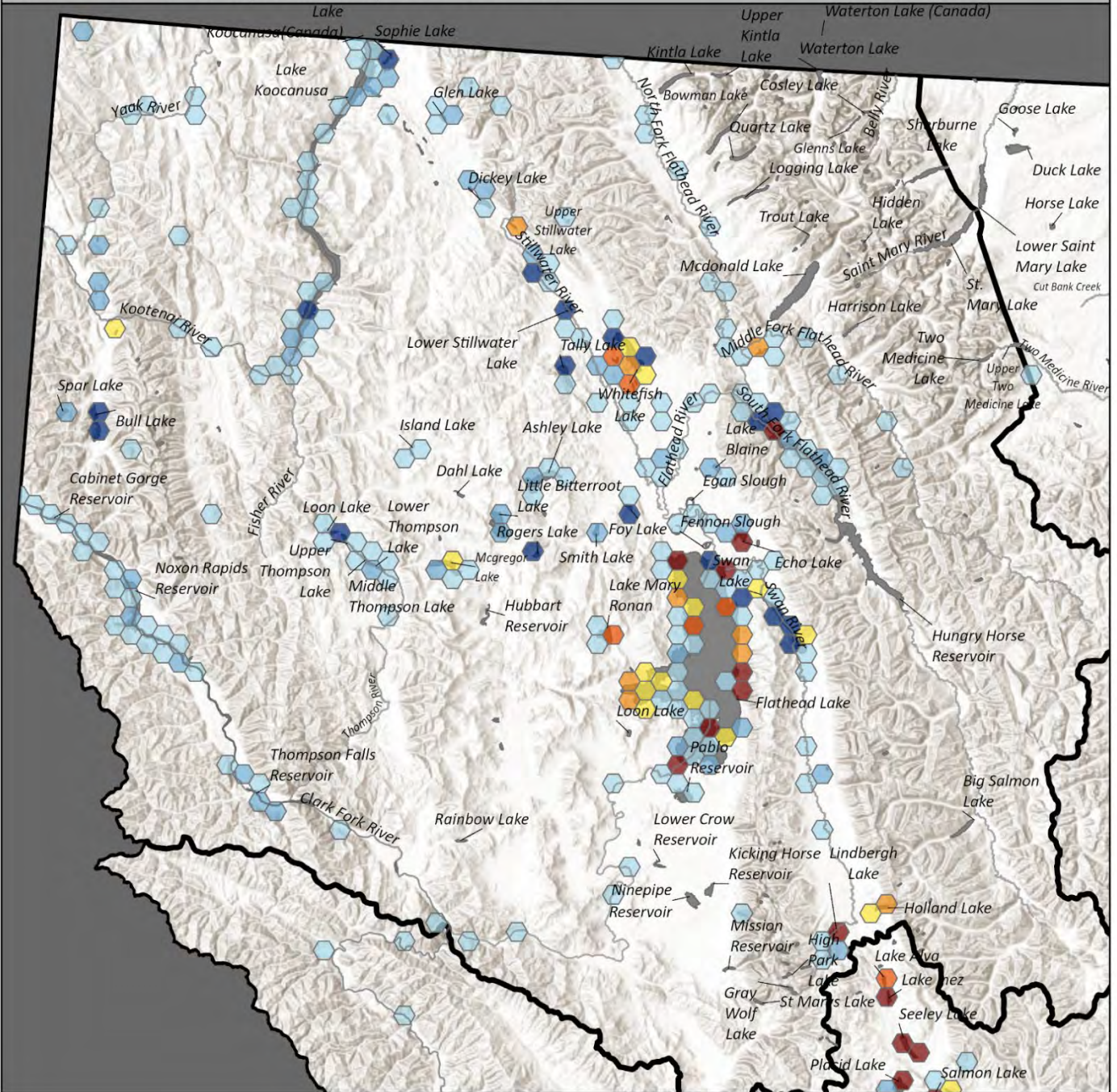


# Appendix C. FWP Regional Maps of AIS Sampling Locations and Intensity

## AIS Surveys - 2025 - Region 1

## MONTANA FWP

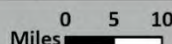
2025 Plankton Net Survey Locations by FWP and Partners



Plankton Net AIS Sample Location Density



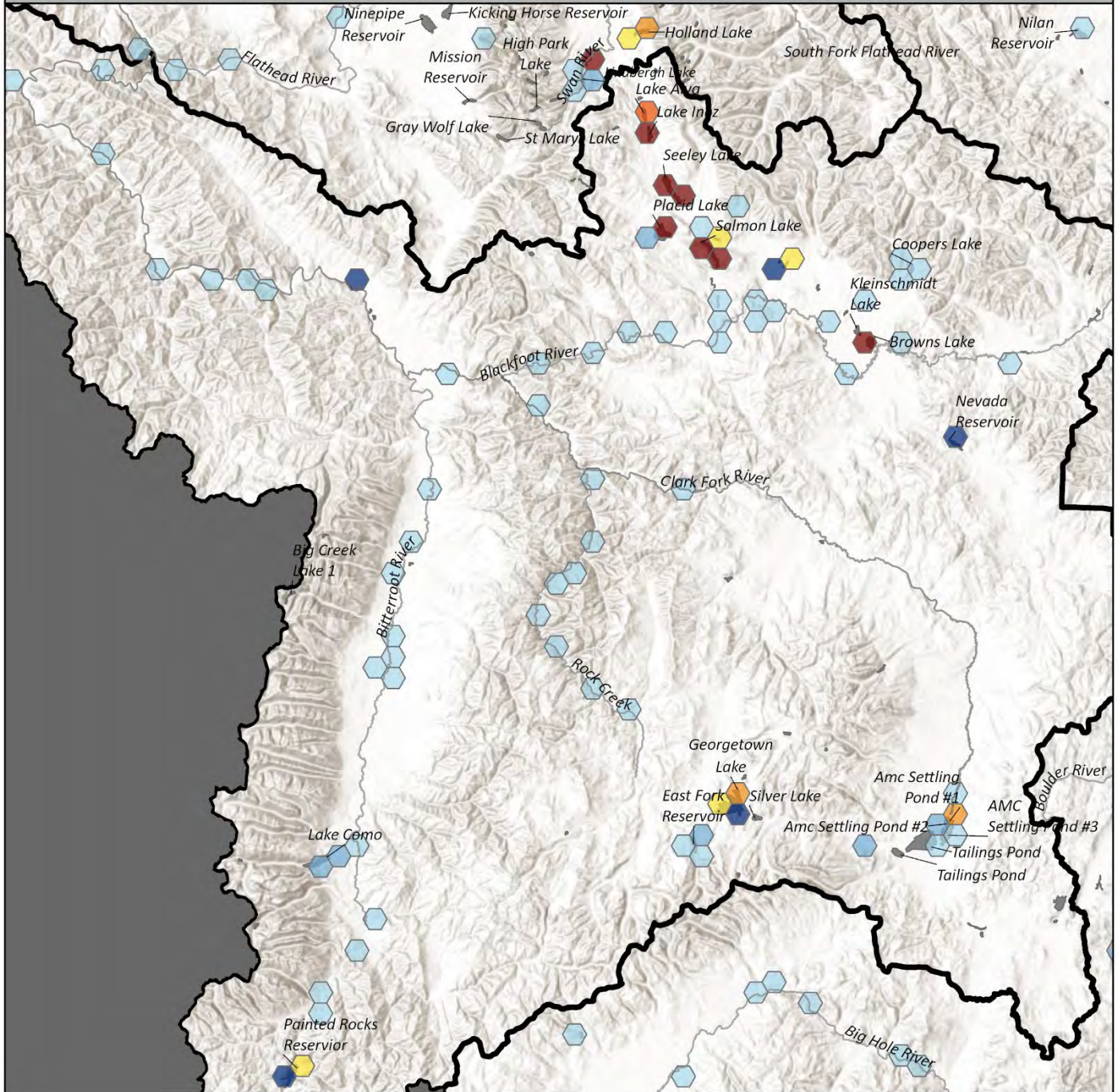
Map Produced by FWP AIS Bureau by CRM 12/23/2025  
 Survey Locations from 01/01/2025-12/23/2025. Contains only sampling data as contained within FWP's AIS database.



# AIS Surveys - 2025 - Region 2

# MONTANA FWP

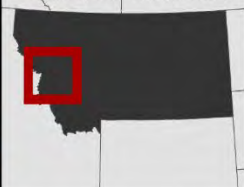
2025 Plankton Net Survey Locations by FWP and Partners



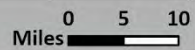
Plankton Net AIS Sample Location Density



Area of Interest



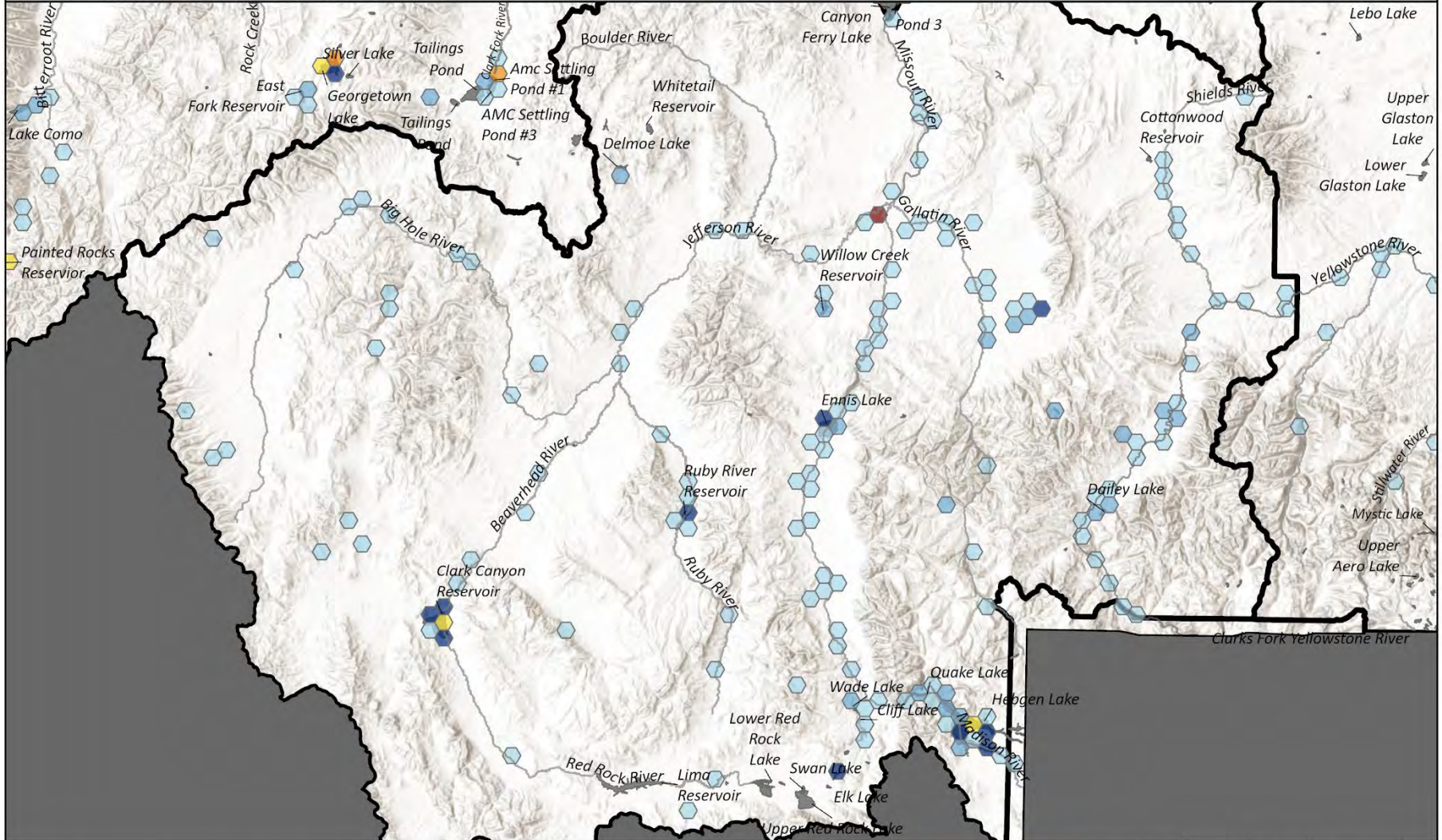
Map Produced by FWP AIS Bureau by CRM 12/23/2025  
 Survey Locations from 01/01/2025-12/23/2025. Contains only sampling data as contained within FWP's AIS database.



# AIS Surveys - 2025 - Region 3

MONTANA FWP

2025 Plankton Net Survey Locations by FWP and Partners



Plankton Net AIS Sample Location Density

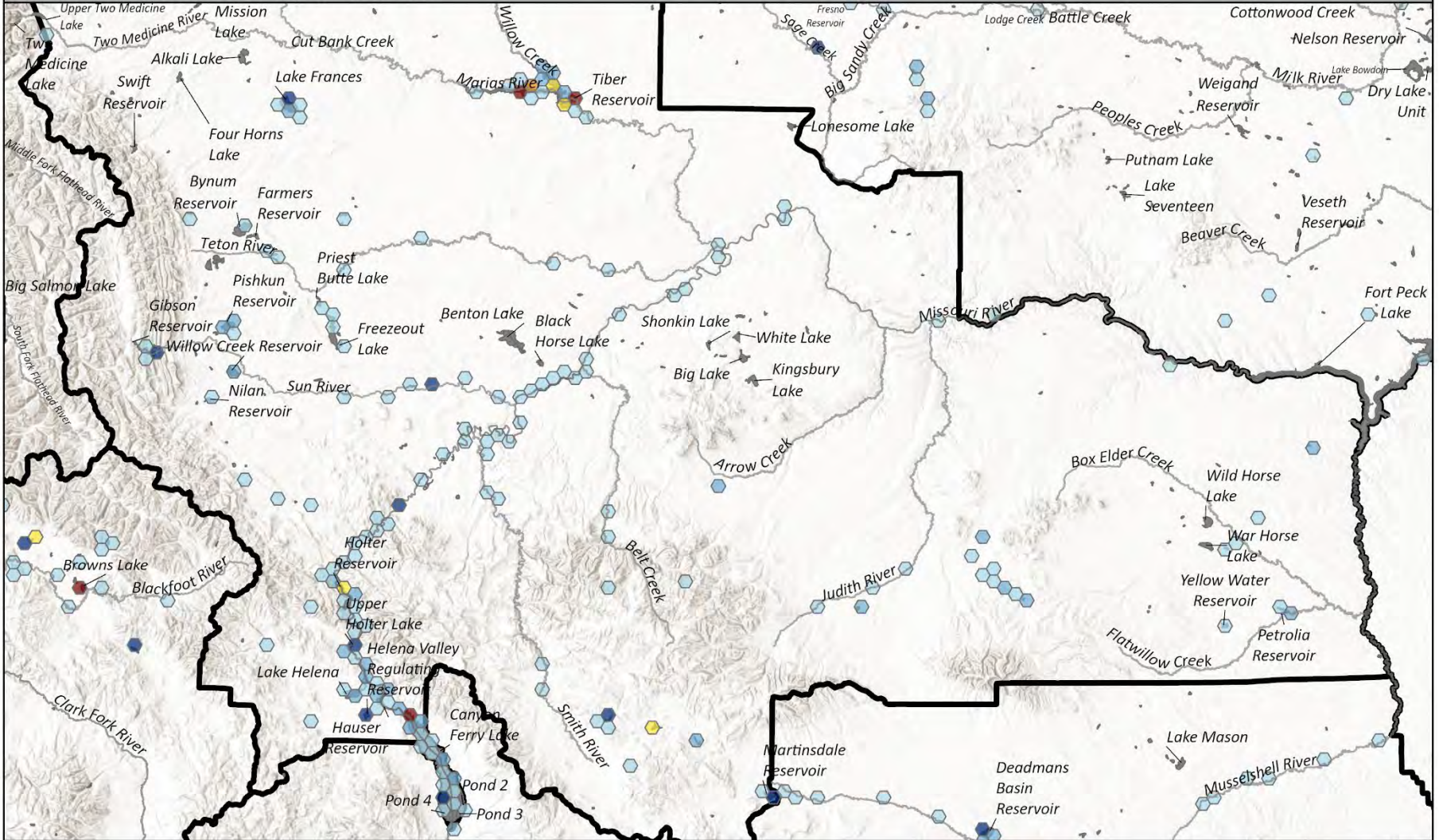


Map Produced by FWP AIS Bureau by CRM 12/23/2025  
 Survey Locations from 01/01/2025-12/23/2025. Contains only sampling data as contained within FWP's AIS database.

# AIS Surveys - 2025 - Region 4

MONTANA FWP

2025 Plankton Net Survey Locations by FWP and Partners



Plankton Net AIS Sample Location Density

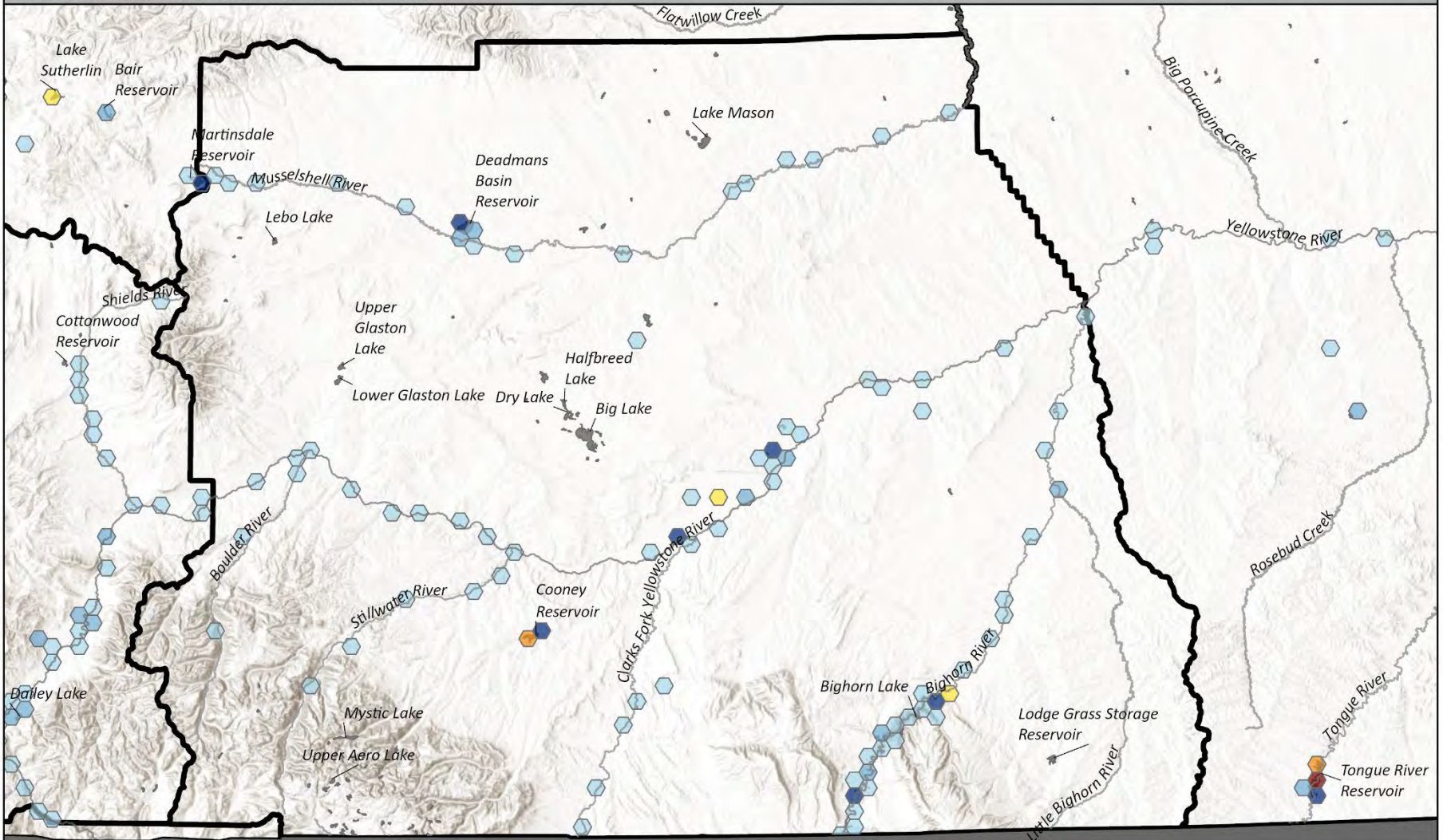


Map Produced by FWP AIS Bureau by CRM 12/23/2025  
 Survey Locations from 01/01/205-12/23/2025. Contains only sampling data as contained within FWP's AIS database.

# AIS Surveys - 2025 - Region 3

MONTANA FWP

2025 Plankton Net Survey Locations by FWP and Partners

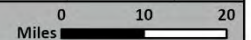


Plankton Net AIS Sample Location Density



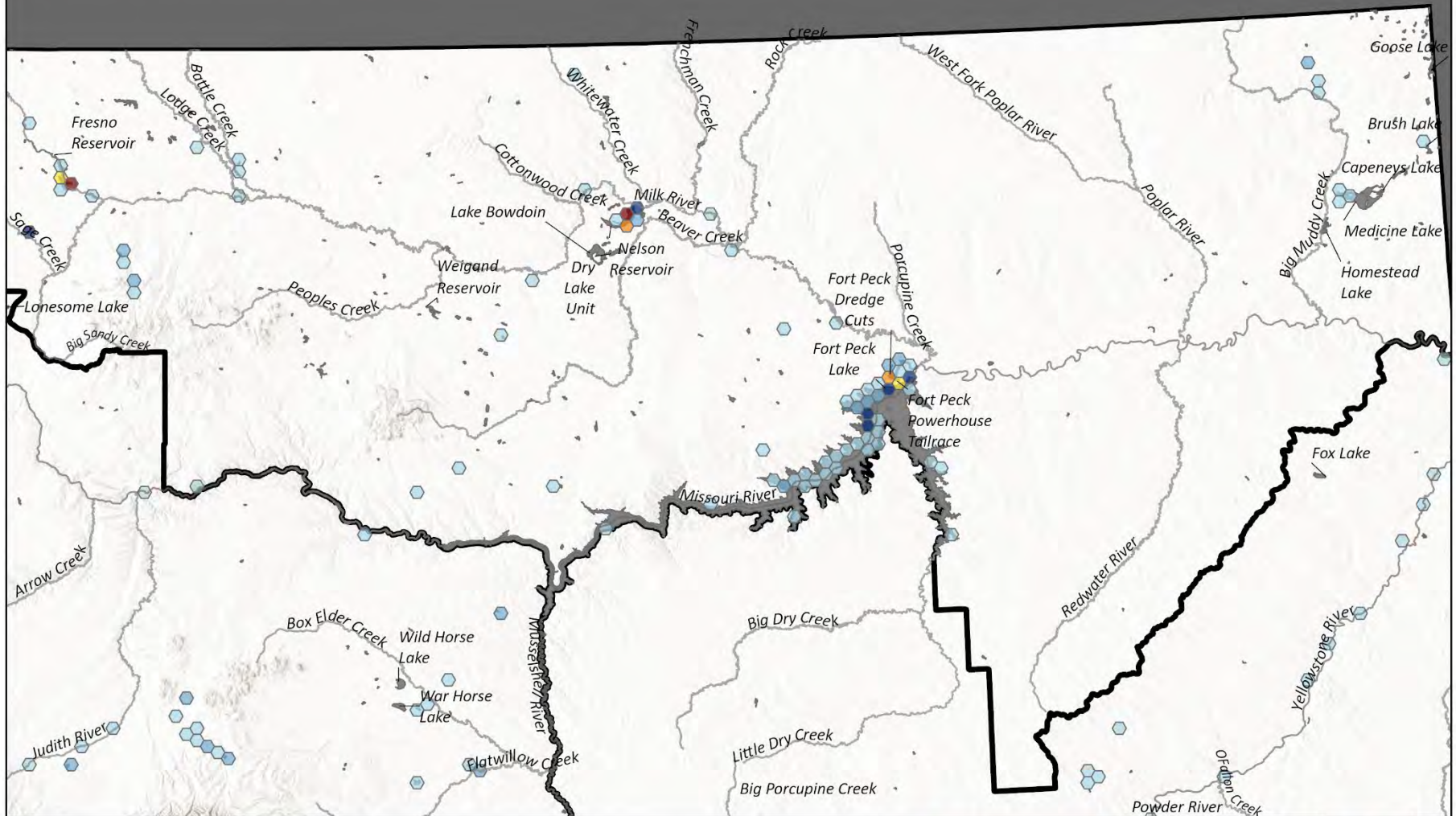
Low  
1 Sample

High  
20+ Samples

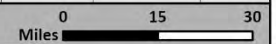


Map Produced by FWP AIS Bureau by CRM 12/23/2025  
Survey Locations from 01/01/2025-12/23/2025. Contains only sampling data as contained within FWP's AIS database.

2025 Plankton Net Survey Locations by FWP and Partners



Plankton Net AIS Sample Location Density

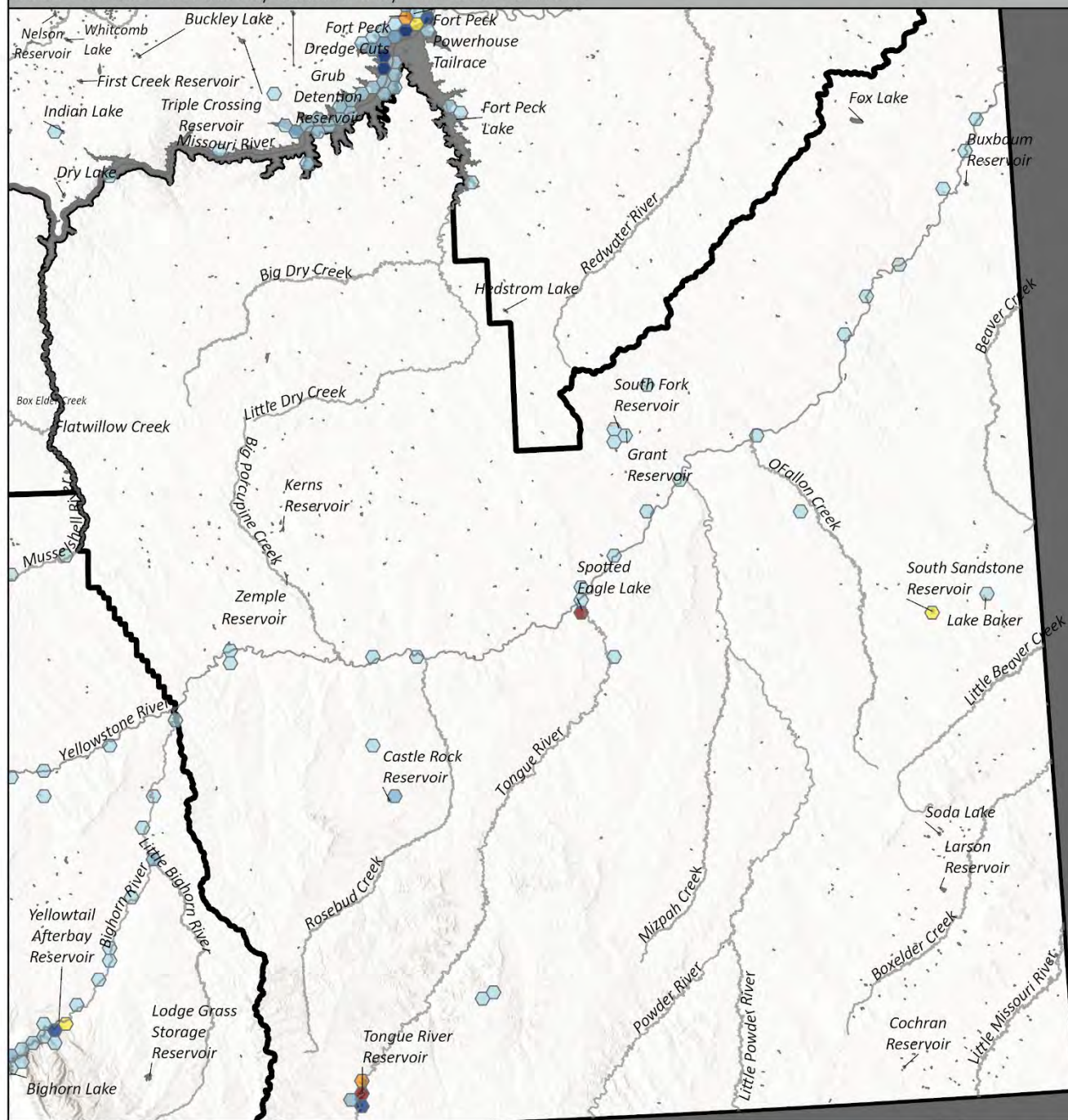


Map Produced by FWP AIS Bureau by CRM 12/23/2025  
Survey Locations from 01/01/2025-12/23/2025. Contains only sampling data as contained within FWP's AIS database.

# AIS Surveys - 2025 - Region 7

# MONTANA FWP

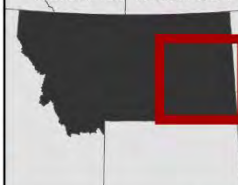
2025 Plankton Net Survey Locations by FWP and Partners



Plankton Net AIS Sample Location Density



Area of Interest



Map Produced by FWP AIS Bureau by CRM 12/23/2025  
 Survey Locations from 01/01/2025-12/23/2025. Contains only sampling data as contained within FWP's AIS database.

0 5 10 Miles

## Appendix D. Plankton and eDNA Sampling Details (Intensity and Sampling Entity)

Waterbody		Plankton Net - Microscopy									invasive mussel eDNA sampling (plankton or filter)				
		MT Fish, Wildlife and Parks	Clearwater Resource Council	Flathead Lake Biological Station	Missoula County Dept of Ecology	Whitefish Lake Institute	Yaak Valley Forest Council	US Bureau of Reclamation	Gallatin Conservation	Plankton Sampling Totals	MT Fish, Wildlife and Parks	US National Park Service	US Bureau of Reclamation	Flathead Lake Biological Station	Whitefish Lake Institute
<b>Eastern Fishing District</b>	<b>Eastern District Totals</b>	<b>468</b>					<b>7</b>		<b>475</b>	<b>78</b>		<b>7</b>			<b>85</b>
	Fort Peck Lake	105							<b>105</b>	32					<b>32</b>
	Tongue River Reservoir	47							<b>47</b>	18					<b>18</b>
	Nelson Reservoir	43					3		<b>46</b>	6		3			<b>9</b>
	Fresno Reservoir	28					4		<b>32</b>	6		4			<b>10</b>
	Yellowstone River	25							<b>25</b>						<b>0</b>
	Lake Elmo	8							<b>8</b>	10					<b>10</b>
	Fort Peck Powerhouse Tailrace	9							<b>9</b>	4					<b>4</b>
	Fort Peck Dredge Cuts	12							<b>12</b>	1					<b>1</b>
	South Sandstone Reservoir	11							<b>11</b>						<b>0</b>
	Spotted Eagle Lake	10							<b>10</b>						<b>0</b>
	Milk River	9							<b>9</b>						<b>0</b>
	Petrolia Reservoir	9							<b>9</b>						<b>0</b>
	Bailey Reservoir	8							<b>8</b>						<b>0</b>
	Missouri River	7							<b>7</b>						<b>0</b>
	Beaver Creek Reservoir	7							<b>7</b>						<b>0</b>
	Musselshell River	6							<b>6</b>						<b>0</b>
	Bearpaw Lake	6							<b>6</b>						<b>0</b>
	Bighorn River	6							<b>6</b>						<b>0</b>
	Tongue River	6							<b>6</b>						<b>0</b>
	Winter Harbor Pond	5							<b>5</b>						<b>0</b>
	Castle Rock Reservoir	5							<b>5</b>						<b>0</b>
	Drag Creek Reservoir	4							<b>4</b>						<b>0</b>
	Reser Reservoir	3							<b>3</b>	1					<b>1</b>
	Wapiti Reservoir	3							<b>3</b>						<b>0</b>
	Bison Bone Reservoir	3							<b>3</b>						<b>0</b>
Five Mile Creek	3							<b>3</b>						<b>0</b>	
Nelson Dredge	3							<b>3</b>						<b>0</b>	
Fort Peck Trout Pond	3							<b>3</b>						<b>0</b>	

Waterbody	Plankton Net - Microscopy										invasive mussel eDNA sampling (plankton or filter)					
	MT Fish, Wildlife and Parks	Clearwater Resource Council	Flathead Lake Biological Station	Missoula County Dept of Ecology	Whitefish Lake Institute	Yaak Valley Forest Council	US Bureau of Reclamation	Gallatin Conservation District	Plankton Sampling Totals	MT Fish, Wildlife and Parks	US National Park Service	US Bureau of Reclamation	Flathead Lake Biological Station	Whitefish Lake Institute	eDNA Sampling Totals	
Eastern Fishing District (Continued)	Dry Fork Reservoir	3							3						0	
	Yellow Water Reservoir	3							3						0	
	Paulo Reservoir	3							3						0	
	Gullwing Reservoir	3							3						0	
	Payola Reservoir	3							3						0	
	Blacks Sawmill Pond	3							3						0	
	Arapooish Pond	3							3						0	
	Valley Reservoir	3							3						0	
	PR161 Reservoir	3							3						0	
	Compton Reservoir	3							3						0	
	Raymond Dam	3							3						0	
	Branum Lake	3							3						0	
	Homestead Reservoir	3							3						0	
	Grant Reservoir	3							3						0	
	South Fork Blood Reservoir	3							3						0	
	Lake Baker	3							3						0	
	South Fork Reservoir	3							3						0	
	Marshall Reservoir	3							3						0	
	Anita Reservoir	3							3						0	
	Medicine Lake	3							3						0	
	Miles City Hatchery Pond	2							2						0	
	Boxelder Lake	2							2						0	
	Reukauf Reservoir	2							2						0	
	Reichenback Pond	2							2						0	
	Stark Pond	1							1						0	
	Cook Lake	1							1						0	
	Rattlesnake Reservoir	1							1						0	
	Bartholomew Pond	1							1						0	
	Brush Lake	1							1						0	
	Coe Campsite Pond #1	1							1						0	

Waterbody		Plankton Net - Microscopy								invasive mussel eDNA sampling (plankton or filter)					
		MT Fish, Wildlife and Parks	Clearwater Resource Council	Flathead Lake Biological Station	Missoula County Dept of Ecology	Whitefish Lake Institute	Yaak Valley Forest Council	US Bureau of Reclamation	Gallatin Conservation	Plankton Sampling Totals	MT Fish, Wildlife and Parks	US National Park Service	US Bureau of Reclamation	Flathead Lake Biological Station	Whitefish Lake Institute
Central Fishing District	<b>Central District Totals</b>	<b>1024</b>					<b>19</b>	<b>18</b>	<b>19</b>	<b>1080</b>	<b>79</b>	<b>82</b>	<b>18</b>		<b>179</b>
	Bighorn Lake	44						3		47	9	82	3		94
	Tiber Reservoir	114						4		118	18		4		22
	Canyon Ferry Lake	52						5		57	16		5		21
	Hebgen Lake	45					14		14	73	10				10
	Missouri River	43								43					0
	Yellowstone River	39								39					0
	Clark Canyon Reservoir	29						4		33	3		4		7
	Hauser Reservoir	29								29	4				4
	Holter Reservoir	26								26	5				5
	Madison River	29								29					0
	Cooney Reservoir	24								24	3				3
	Lake Frances	19								19	3				3
	Ennis Lake	11					5		5	21	3				3
	Deadmans Basin Reservoir	17								17					0
	Upper Holter Lake	14								14	3				3
	Willow Creek Reservoir	12								12					0
	Lake Sutherland	12								12					0
	Newlan Reservoir	12								12					0
	Ruby River Reservoir	12								12					0
	Bighorn River	11								11					0
	Musselshell River	10								10					0
	Gallatin River	10								10					0
	Martinsdale Reservoir	10								10					0
	Shields River	10								10					0
Pishkun Reservoir	10								10					0	
Three Forks Pond	10								10					0	
Dailey Lake	9								9					0	

Waterbody	Plankton Net - Microscopy									invasive mussel eDNA sampling (plankton or filter)					
	MT Fish, Wildlife and Parks	Clearwater Resource Council	Flathead Lake Biological Station	Missoula County Dept of Ecology	Whitefish Lake Institute	Yaak Valley Forest Council	US Bureau of Reclamation	Gallatin Conservation District	Plankton Sampling Totals	MT Fish, Wildlife and Parks	US National Park Service	US Bureau of Reclamation	Flathead Lake Biological Station	Whitefish Lake Institute	eDNA Sampling Totals
Yellowtail Afterbay Reservoir	8						1		9			1			1
Gibson Reservoir	8								8						0
Big Hole River	8								8						0
Elk Lake	8								8						0
Quake Lake	8								8						0
Helena Valley Regulating Reservoir	6						1		7		1				1
Ruby River	7								7						0
Smith River	7								7						0
Beaverhead River	7								7						0
Wade Lake	7								7						0
Jefferson River	6								6						0
Regional Parks Ponds	6								6						0
Lake Josephine	6								6						0
Joels Pond	6								6						0
Sun River	6								6						0
Wayne Edsall Pond	6								6						0
Lake Helena	6								6						0
Laurel Pond	6								6						0
Hyalite Reservoir	6								6						0
Legacy Ranch Pond	6								6						0
Stillwater River	6								6						0
Bair Reservoir	5								5						0
Eight Mile Lake	5								5						0
Teton River	5								5						0
Pelican Point #1	5								5						0
Cliff Lake	5								5						0
Ackley Lake	5								5						0
Big Spring Creek	5								5						0
Eureka Reservoir	5								5						0

Waterbody		Plankton Net - Microscopy									invasive mussel eDNA sampling (plankton or filter)					
		MT Fish, Wildlife and Parks	Clearwater Resource Council	Flathead Lake Biological Station	Missoula County Dept of Ecology	Whitefish Lake Institute	Yaak Valley Forest Council	US Bureau of Reclamation	Gallatin Conservation District	Plankton Sampling Totals	MT Fish, Wildlife and Parks	US National Park Service	US Bureau of Reclamation	Flathead Lake Biological Station	Whitefish Lake Institute	eDNA Sampling Totals
Central Fishing District (Continued)	Delmoe Lake	5								5						0
	East Fork Reservoir	4								4						0
	East Fork Reservoir	4								4						0
	Red Rock River	4								4						0
	Shiloh Conservation Pond 2	4								4						0
	Clarks Fork Yellowstone River	4								4						0
	Three Forks Pond West	4								4						0
	Three Forks Pond East	4								4						0
	Judith River	3								3						0
	Lower Miner Lakes	3								3						0
	Tanglewood Lake	3								3						0
	Carters Pond	3								3						0
	Valley West Pond	3								3						0
	Big Sky Pond	3								3						0
	Blacktail Meadows Kids Pond	3								3						0
	Hansen Reservoir	3								3						0
	Yellowstone Trout Hatchery Effluent	3								3						0
	Boulder River	3								3						0
	Upper Carters Pond	3								3						0
	Priest Butte Lake	3								3						0
	Mussigbrod Lake	3								3						0
	Bozeman Pond	3								3						0
	Little Prickly Pear Creek	3								3						0
	Largent Bend Pond # 2	3								3						0
	Marias River	4								4						0
	Bluewater Creek	3								3						0
Elk Grove Community Pond	3								3						0	
Largent Bend Pond # 3	3								3						0	
Lower Eyraud Lake	3								3						0	

Waterbody	Plankton Net - Microscopy									invasive mussel eDNA sampling (plankton or filter)					
	MT Fish, Wildlife and Parks	Clearwater Resource Council	Flathead Lake Biological Station	Missoula County Dept of Ecology	Whitefish Lake Institute	Yaak Valley Forest Council	US Bureau of Reclamation	Gallatin Conservation District	Plankton Sampling Totals	MT Fish, Wildlife and Parks	US National Park Service	US Bureau of Reclamation	Flathead Lake Biological Station	Whitefish Lake Institute	eDNA Sampling Totals
Dearborn River	3								3						0
Twin Lakes	3								3						0
East Gallatin River	3								3						0
Ennis Kids Pond	3								3						0
River Rock Pond	3								3						0
Wise River	3								3						0
Hansen Creek	3								3						0
Wadsworth Lake	3								3						0
Sacajawea Park Lagoon	3								3						0
Big Casino Creek Reservoir	3								3						0
Spring Meadow Lake	2								2						0
Nilan Reservoir	2								2						0
Kolar Reservoir 2	2								2						0
Pelican Point Pond #2	2								2						0
Belt Creek	2								2						0
Darlington Ditch 1	2								2						0
Morony Reservoir	2								2						0
Pond Number 1	2								2						0
Unknown	2								2						0
Hauser Lake									0	2					2
Shiloh Conservation Pond 1	2								2						0
Pond Number 3	2								2						0
Ostle Reservoir	2								2						0
Broadview Pond	2								2						0
Freezeout Lake	2								2						0
Kolar Reservoir 1	2								2						0
Bynum Reservoir	2								2						0
Pond 3	1								1						0
Dry Fork Belt Creek	1								1						0
Blaine Spring Creek	1								1						0

Waterbody	Plankton Net - Microscopy									invasive mussel eDNA sampling (plankton or filter)					
	MT Fish, Wildlife and Parks	Clearwater Resource Council	Flathead Lake Biological Station	Missoula County Dept of Ecology	Whitefish Lake Institute	Yaak Valley Forest Council	US Bureau of Reclamation	Gallatin Conservation District	Plankton Sampling Totals	MT Fish, Wildlife and Parks	US National Park Service	US Bureau of Reclamation	Flathead Lake Biological Station	Whitefish Lake Institute	eDNA Sampling Totals
Central Fishing District (Continued)	Midvale Creek	1							1						0
	South Fork Willow Creek	1							1						0
	Browns Creek	1							1						0
	Cochrane Reservoir	1							1						0
	West Fork Gallatin River	1							1						0
	Brays Canyon Creek	1							1						0
	Peet Creek	1							1						0
	Pond 2	1							1						0
	Pilgrim Creek	1							1						0
	Spring Creek Hatchery Effluent	1							1						0
	Indian Road Pond	1							1						0
	Gardner River	1							1						0
	Reservoir Creek	1							1						0
	Trib to Painter Creek RM 8.7	1							1						0
	Roe River	1							1						0
	The Lakes Subdivision	1							1						0
	Ruby Creek	1							1						0
Mccoy Creek	1							1						0	
Jake Canyon Creek	1							1						0	

Waterbody		Plankton Net - Microscopy									invasive mussel eDNA sampling (plankton or filter)					
		MT Fish, Wildlife and Parks	Clearwater Resource Council	Flathead Lake Biological Station	Missoula County Dept of Ecology	Whitefish Lake Institute	Yaak Valley Forest Council	US Bureau of Reclamation	Gallatin Conservation District	Plankton Sampling Totals	MT Fish, Wildlife and Parks	US National Park Service	US Bureau of Reclamation	Flathead Lake Biological Station	Whitefish Lake Institute	eDNA Sampling Totals
Western Fishing District	<b>Western District Totals</b>	<b>891</b>	<b>156</b>	<b>288</b>	<b>71</b>	<b>134</b>	<b>50</b>	<b>12</b>	<b>50</b>	<b>1652</b>	<b>95</b>		<b>12</b>	<b>288</b>	<b>60</b>	<b>455</b>
	Flathead Lake	119		264		14	10		10	417	41			264		305
	Seeley Lake	29	40							69	6					6
	Hungry Horse Reservoir	33		9		8		12		62	6		12	9	8	35
	Salmon Lake	22	36							58	5					5
	Lake Koochanusa	39					16		16	71	6					6
	Whitefish Lake	35				19				54	6				19	25
	Swan Lake	34				3				37	3				2	5
	Lindbergh Lake	9			28	2				39					2	2
	Georgetown Lake	32								32	6					6
	Noxon Rapids Reservoir	30								30	6					6
	Placid Lake	2	28							30	4					4
	Lake Inez	2	24							26						0
	Bull Lake	20					4		4	28						0
	Holland Lake	6			15	3				24					2	2
	Lake Mary Ronan	15		2		2				19	3			2		5
	Fish Lake	5	12			2				19						0
	Upsata Lake	6			12					18						0
	Echo Lake	13		2		3				18				2	2	4
	Browns Lake	2			16					18						0
	Flathead River	12		6						18				6		6
	Lake Alva	1	16							17						0
	Cabinet Gorge Reservoir	13								13	3					3
	Painted Rocks Reservoir	16								16						0
Clark Fork River	15								15						0	
Blanchard Lake	9				4				13					4	4	
Little Bitterroot Lake	8		2		2				12				2		2	

Waterbody	Plankton Net - Microscopy									invasive mussel eDNA sampling (plankton or filter)				
	MT Fish, Wildlife and Parks	Clearwater Resource Council	Flathead Lake Biological Station	Missoula County Dept of Ecology	Whitefish Lake Institute	Yaak Valley Forest Council	US Bureau of Reclamation	Gallatin Conservation District	Plankton Sampling Totals	MT Fish, Wildlife and Parks	US National Park Service	US Bureau of Reclamation	Flathead Lake Biological Station	Whitefish Lake Institute
Thompson Falls Reservoir	12								12					0
Tally Lake	10				2				12				2	2
Ashley Lake	8		2		2				12			2	2	4
Beaver Lake	6				6				12				6	6
McGregor Lake	12								12					0
Lake Five	8				3				11					0
Blackfoot River	11								11					0
Loon Lake	7				2	2		2	13					0
Upper Stillwater Lake	8				2				10				2	2
Lake Como	9								9					0
Nevada Reservoir	9								9					0
North Fork Flathead River	8								8					0
Bootjack Lake	6				2				8					0
Little McGregor Lake	8								8					0
Swan River	7		1						8			1		1
Kootenai River	8								8					0
Horseshoe Lake	8								8					0
Rock Creek	8								8					0
Savage Lake	6					2		2	10					0
Lower Stillwater Lake	6				2				8				2	2
Rogers Lake	6				2				8					0
Glen Lake	4				3				7					0
Dickey Lake	4				3				7					0
Foy Lake	5				2				7					0
AMC Settling Pond 1B	7								7					0
Smith Lake	5				2				7					0
AMC Settling Pond #3	6								6					0
Bitterroot River	6								6					0
East Fork Reservoir	6								6					0
Warm Springs Creek	6								6					0

Waterbody	Plankton Net - Microscopy									invasive mussel eDNA sampling (plankton or filter)					
	MT Fish, Wildlife and Parks	Clearwater Resource Council	Flathead Lake Biological Station	Missoula County Dept of Ecology	Whitefish Lake Institute	Yaak Valley Forest Council	US Bureau of Reclamation	Gallatin Conservation District	Plankton Sampling Totals	MT Fish, Wildlife and Parks	US National Park Service	US Bureau of Reclamation	Flathead Lake Biological Station	Whitefish Lake Institute	eDNA Sampling Totals
Frenchtown Pond	6								6						0
Sophie Lake	4				2				6						0
Lake Blaine	4				2				6						0
Middle Thompson Lake	6								6						0
Lost Coon Lake	4				2				6						0
Tetrault Lake	4				2				6						0
Murphy Lake	3				2				5				1		1
Van Lake	3				2				5				2		2
McGilvray Lake	3				2				5						0
Whitefish River	5								5						0
Halfmoon Lake	3				2				5						0
Kilbrennan Lake	3					2		2	7						0
Alvord Lake	3					2		2	7						0
Middle Fork Flathead River	5								5						0
Spar Lake	3					2		2	7						0
Church Slough	4								4						0
Coopers Lake	4								4						0
Island Lake	4								4						0
Hawkins Lake						4		4	8						0
West Fork Bitterroot River	4								4						0
Yaak River	4								4						0
Upper Thompson Lake	4								4						0
South Fork Flathead River	3								3						0
Clearwater River	3								3						0
Thompson Park Pond	3								3						0
Pablo Reservoir	3								3						0
Mitchell Slough East Channel	3								3						0
Lower Thompson Lake	3								3						0
Stillwater River	3								3						0
Cottonwood Lake, Middle	3								3						0

Waterbody	Plankton Net - Microscopy									invasive mussel eDNA sampling (plankton or filter)				
	MT Fish, Wildlife and Parks	Clearwater Resource Council	Flathead Lake Biological Station	Missoula County Dept of Ecology	Whitefish Lake Institute	Yaak Valley Forest Council	US Bureau of Reclamation	Gallatin Conservation District	Plankton Sampling Totals	MT Fish, Wildlife and Parks	US National Park Service	US Bureau of Reclamation	Flathead Lake Biological Station	Whitefish Lake Institute
Pine Grove Pond	3								3					0
Duck Lake	3								3					0
Murray Lake					2				2					0
Milnor Lake						2		2	4					0
Bailey Lake					2				2					0
Howard Lake	2								2					0
North Fork Blackfoot River	2								2					0
Skyles Lake					2				2					0
Big Therriault Lake					2				2					0
Upper Whitefish Lake					2				2				1	1
Troy Kids Pond	2								2					0
AMC Settling Pond #1	2								2					0
Spencer Lake					2				2					0
Crystal Lake	2								2					0
Lion Lake					2				2				2	2
Peterson Lake					2				2					0
AMC Settling Pond 1C	2								2					0
Abbot Lake					2				2					0
Hoskins Lake						2		2	4					0
AMC Settling Pond #2	2								2					0
Rivers Edge Pond	2								2					0
Hanson-Doyle Lake					2				2					0
Dollar Lake					2				2					0
McDonald Lake	2								2					0
Vinal Lake						2		2	4					0
Beaver Creek					1				1				1	1
Nimrod Pond	1								1					0
AMC Settling Pond 1A	1								1					0
Little Thompson	1								1					0
Rosewater Lake	1								1					0

Waterbody		Plankton Net - Microscopy								invasive mussel eDNA sampling (plankton or filter)					
		MT Fish, Wildlife and Parks	Clearwater Resource Council	Flathead Lake Biological Station	Missoula County Dept of Ecology	Whitefish Lake Institute	Yaak Valley Forest Council	US Bureau of Reclamation	Gallatin Conservation District	Plankton Sampling Totals	MT Fish, Wildlife and Parks	US National Park Service	US Bureau of Reclamation	Flathead Lake Biological Station	Whitefish Lake Institute
Western District	Frog Pond	1							1						0
	Middle Foy Lake	1							1						0
	Braid of Bitterroot River	1							1						0
	Othorp Lake	1							1						0
	Rose Creek Hatchery Effluent	1							1						0
	Saint Regis River	1							1						0
	Mill Willow Bypass	1							1						0
	Chamberlain Creek	1							1						0
	Stahl Creek	1							1						0