

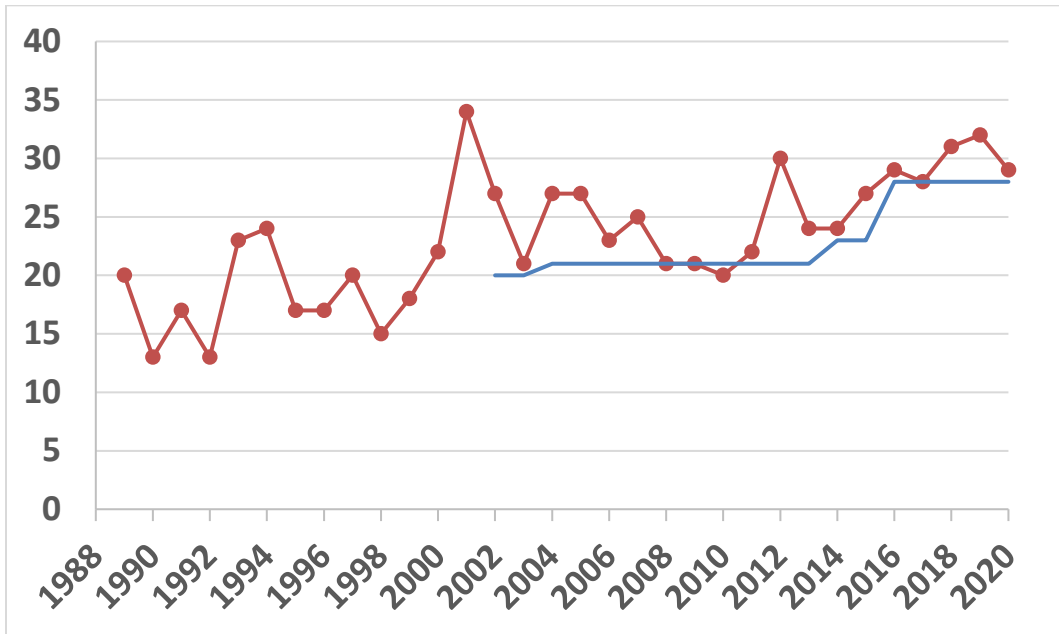
**MONTANA FISH, WILDLIFE AND PARKS
HUNTING SEASON-QUOTA CHANGE SUPPORTING INFORMATION**

Species: River Otter
Region: 1
Year: 2021

1. Describe the proposed season-quotas changes and provide a summary of prior history (e.g., prior history of permits, season types).

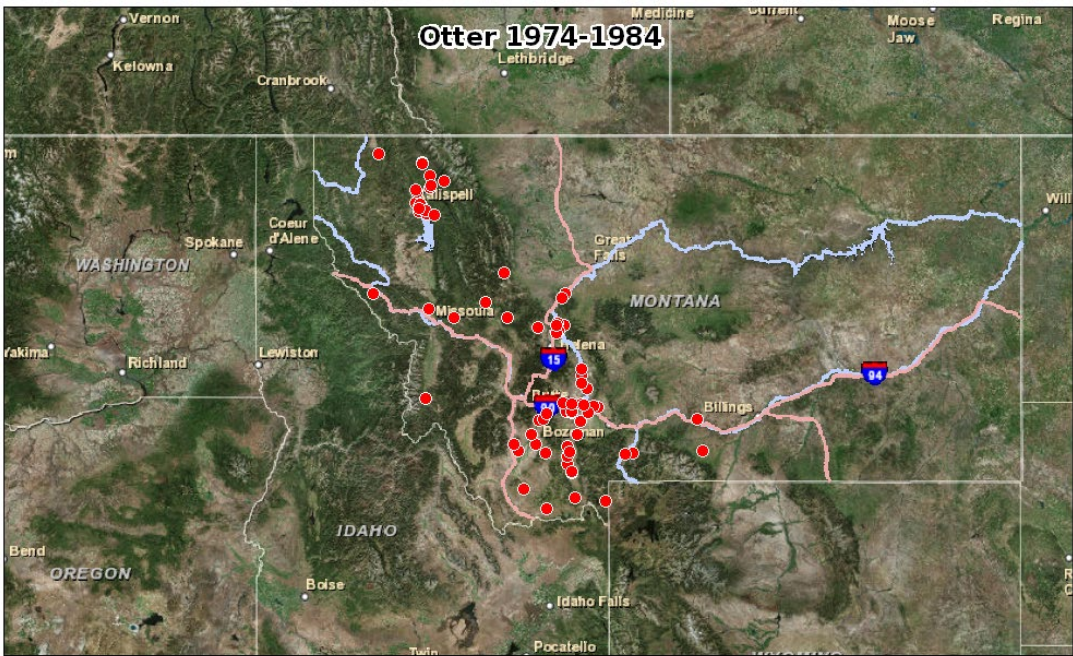
Increase the harvest quota of river otter in R-1 from 28 to 40, and the personal quota from 3 to 4 otters/trapper beginning with the 2021 season.

Legal otter harvest is a function of the harvest quota. Prior to 2002, there was a 1 otter/person limit. In 2002, a harvest quota of 20 with a personal quota of 3 otters/trapper was established. In 2016, the quota was raised to 28, and we typically exceeded the harvest quota by about 1 annually. The additional harvest beyond the quota are typically incidental to beaver trapping. Most of the otter harvest occurs in Flathead and Lincoln Counties.



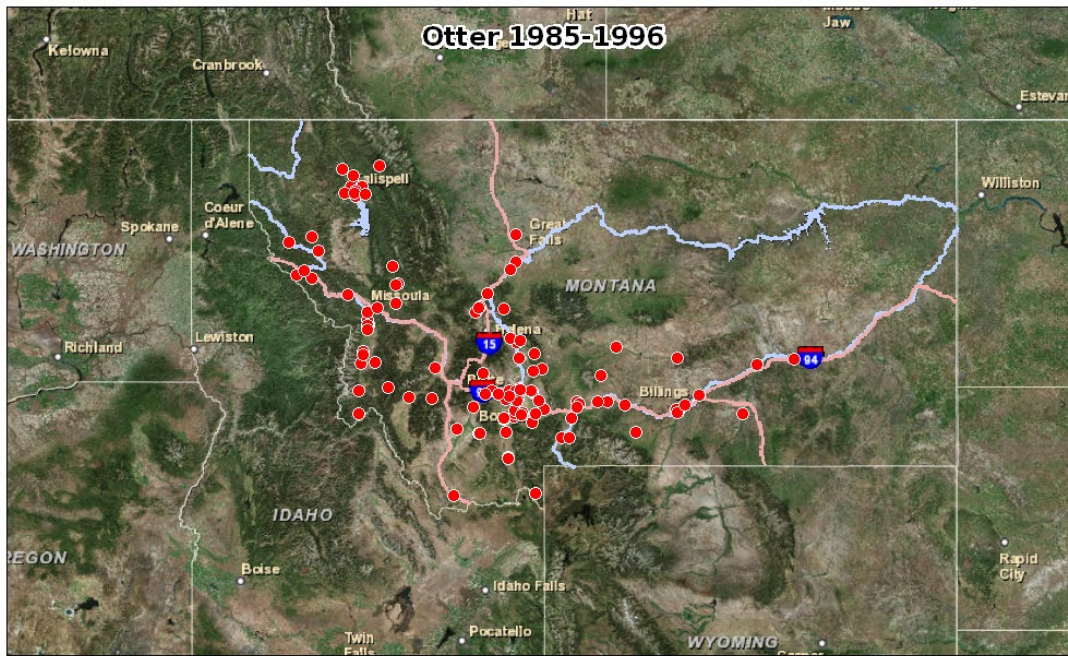
2. Why is the proposed change necessary?

A change in the harvest regulation for otters is not necessary; however, anecdotal information suggests that we could increase harvest without negatively impacting the otter population in Region 1. Currently, we have no evidence of overharvest, and more opportunity for harvest may exist.



Printed from fwp.mt.gov 1:7,788,348
July 27, 2015 0 65 130 260 mi
0 105 210 420 km

Due to page size limitations, not all layers in your map may appear in the exported map legend.



Printed from fwp.mt.gov 1:7,788,348
July 27, 2015 0 65 130 260 mi
0 105 210 420 km

Due to page size limitations, not all layers in your map may appear in the exported map legend.



Due to page size limitations, not all layers in your map may appear in the exported map legend.



Printed from fwp.mt.gov 1:17,788,348
July 27, 2015 0 65 130 260 mi
0 105 210 420 km

Due to page size limitations, not all layers in your map may appear in the exported map legend.