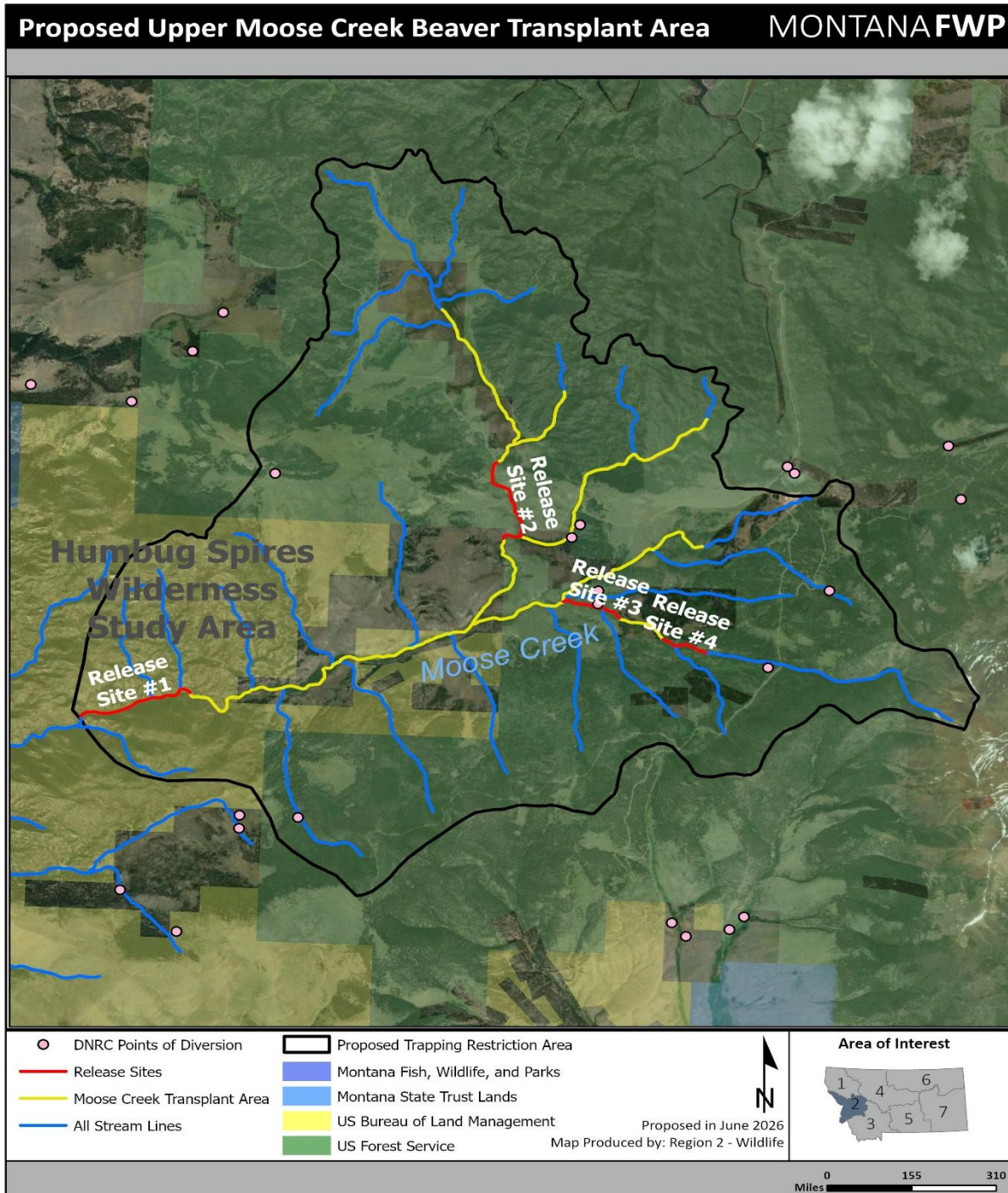




Montana Beaver Transplant Program

Upper Moose Creek Beaver Transplant Area – Project Brief



Overview of the proposed upper Moose Creek Watershed Beaver Transplant Area near Divide.

Project Sponsor: Vanna Boccadori (R3) and Torrey Ritter (FWP R2 Nongame Biologist),
torrey.ritter@mt.gov, 406-381-2339

Stream Name(s): Moose Creek, North Fork Moose Creek, Middle Fork Moose Creek

Project Overview: The Nature Conservancy, Big Hole Watershed Committee, and Beaverhead-Deerlodge National Forest are teaming up to propose the Moose Creek Beaver Transplant Area. The Moose Creek drainage once had extensive beaver colonies spread throughout the basin, but the beavers largely disappeared for unknown reasons in recent decades. The area contains highly suitable beaver habitat evidenced by widespread but abandoned beaver dam berms, old lodges, and other sign. Project partners are installing beaver dam analogs to patch old dam berms and supply starter infrastructure for beavers in the drainage to maximize the potential for successful colonization by beavers if the Transplant Area is approved by the Fish and Wildlife Commission.

Landowner Outreach: While the Moose Creek drainage has diverse landownership, all landowners and water right users with the potential to be affected by the proposed project have been contacted and are either supportive or neutral on the project. Project partners are planning on installing non-lethal beaver conflict resolution devices (e.g., culvert fences) at key sites in the drainage ahead of the project as a pro-active measure to mitigate potential beaver-human conflicts. All project partners, and the Montana Beaver Conflict Resolution Program, are prepared to answer any calls from landowners and water users in the basin should conflicts with beavers develop.

Trapping Restrictions: To stay consistent with the annual cycle of trapping regulation changes, FWP is considering proposals for trapping restrictions to be presented at the August 2026 commission meeting. Such proposals may include trapping closures in approved beaver translocation areas.