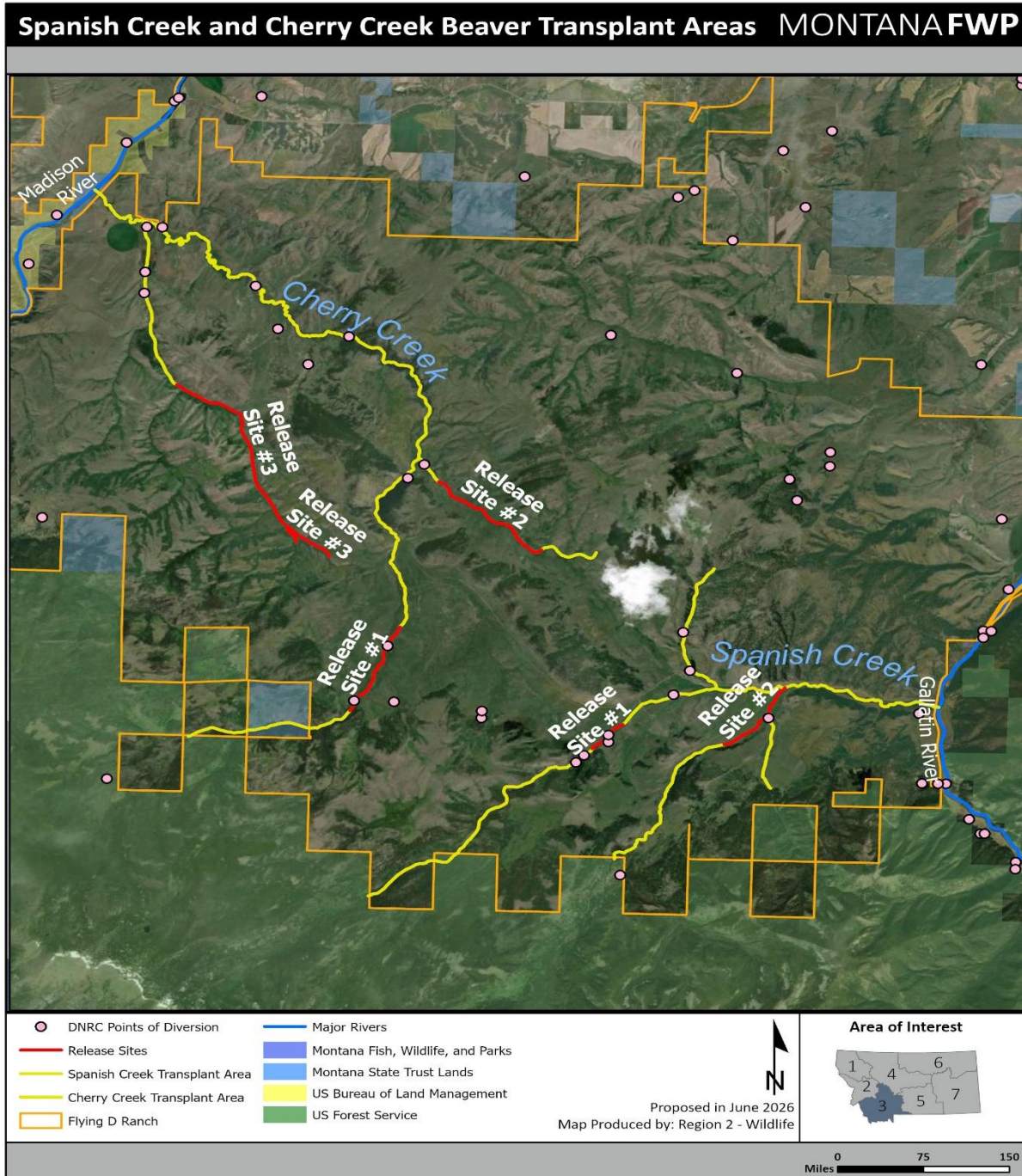




# Montana Beaver Transplant Program

## Flying D Ranch Beaver Transplant Area – Project Brief



**Overview of the proposed Cherry Creek and Spanish Creek Beaver Transplant Areas on the Flying D Ranch near Gallatin Gateway.**

**Project Sponsor:** Claire Gower (FWP R3 Nongame Biologist) and Torrey Ritter (FWP R2 Nongame Biologist), torrey.ritter@mt.gov, 406-381-2339

**Stream Name(s):** Cherry Creek and Spanish Creek drainages, including tributaries

**Project Overview:** The Flying D Ranch owns the entirety of two large stream drainages: Cherry Creek flows into the Madison River and Spanish Creek flows into the Gallatin River. Both drainages contain a large amount of currently suitable beaver habitat as well as habitats that will become suitable for beavers due to ongoing restoration efforts. The Flying D Ranch would like to propose these two drainages as beaver Transplant Areas so they can move beavers that are involved with human-beaver conflicts in the Gallatin and Madison valleys into the ranch to support stream restoration efforts.

**Landowner Outreach:** The Flying D Ranch transitions directly into the Custer-Gallatin Nation Forest (CGNF) at the upstream end of the Cherry Creek and Spanish Creek drainages. The CGNF is highly supportive of these drainages becoming beaver Transplant Areas as beaver activity is expected to be beneficial to streams on the CGNF as well. However, no beaver releases would occur on CGNF lands. Downstream of the Flying D Ranch, both Cherry Creek and Spanish Creek enter large river systems where beavers are ubiquitous and do not build dams. Therefore, the probability of beaver-human conflicts developing as a result of beaver transplants on the Flying D Ranch is very low. Only the CGNF were contacted as part of outreach for this proposed Transplant Area.

**Trapping Restrictions:** To stay consistent with the annual cycle of trapping regulation changes, FWP is considering proposals for trapping restrictions to be presented at the August 2026 commission meeting. Such proposals may include trapping closures in approved beaver translocation areas.