

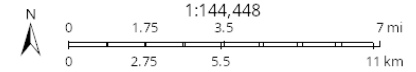


Fishing Access Site Locations

-  HUNTING ALLOWED
-  NO HUNTING

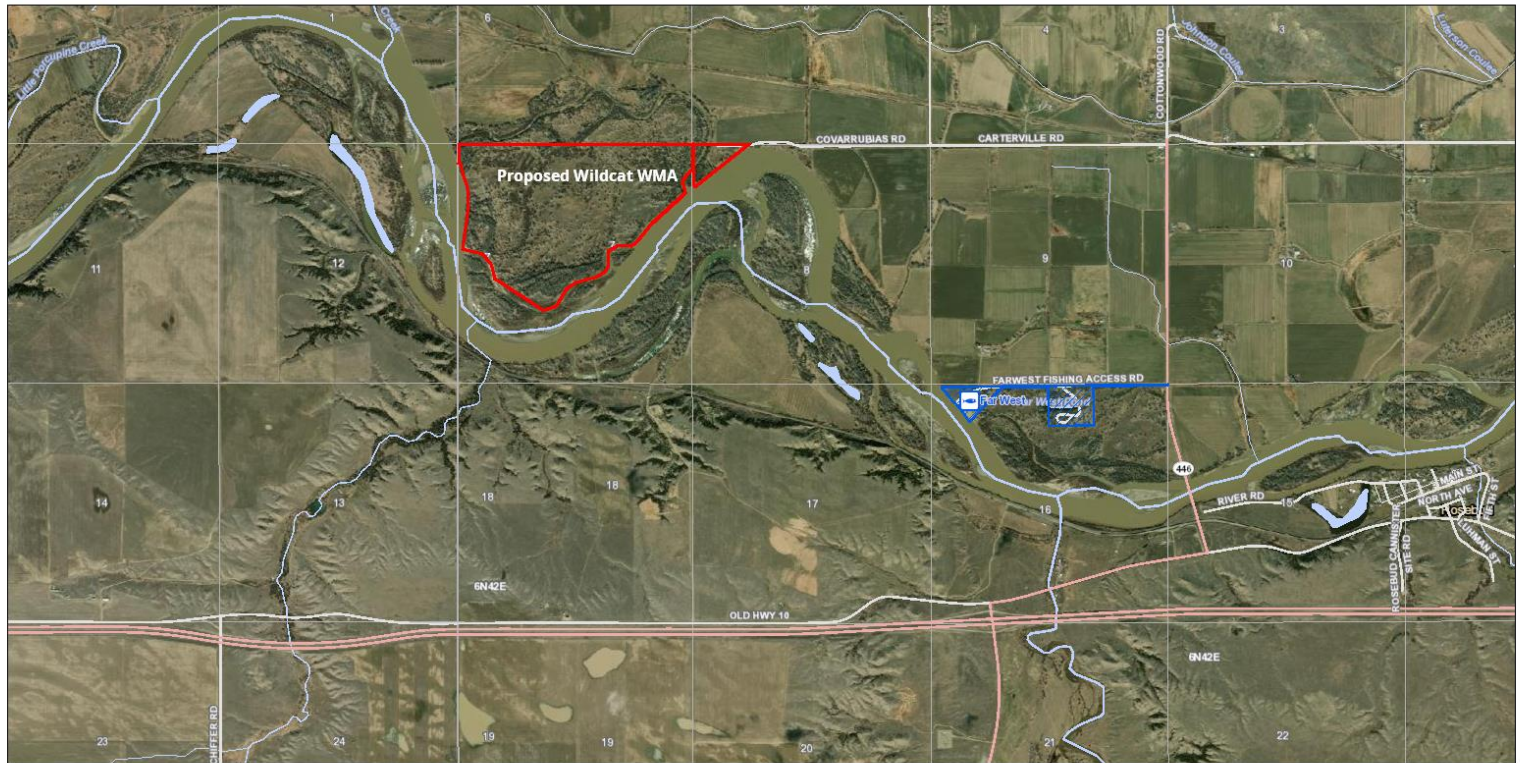
Printed from fwp.mt.gov
December 29, 2021





This map was generated from the Montana Fish, Wildlife & Parks (FWP) internal FWP Mapper online mapping system. Data layers on this map may depict sensitive species level information. This map is not intended for distribution or use beyond work associated with FWP.

Some layers may not appear in the legend due to page size limitations.



Image 1:



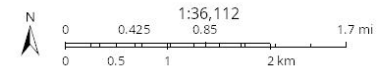
Fishing Access Site Locations

-  HUNTING ALLOWED
-  NO HUNTING

Fishing Access Site Boundaries

-  HUNTING ALLOWED
-  NO HUNTING

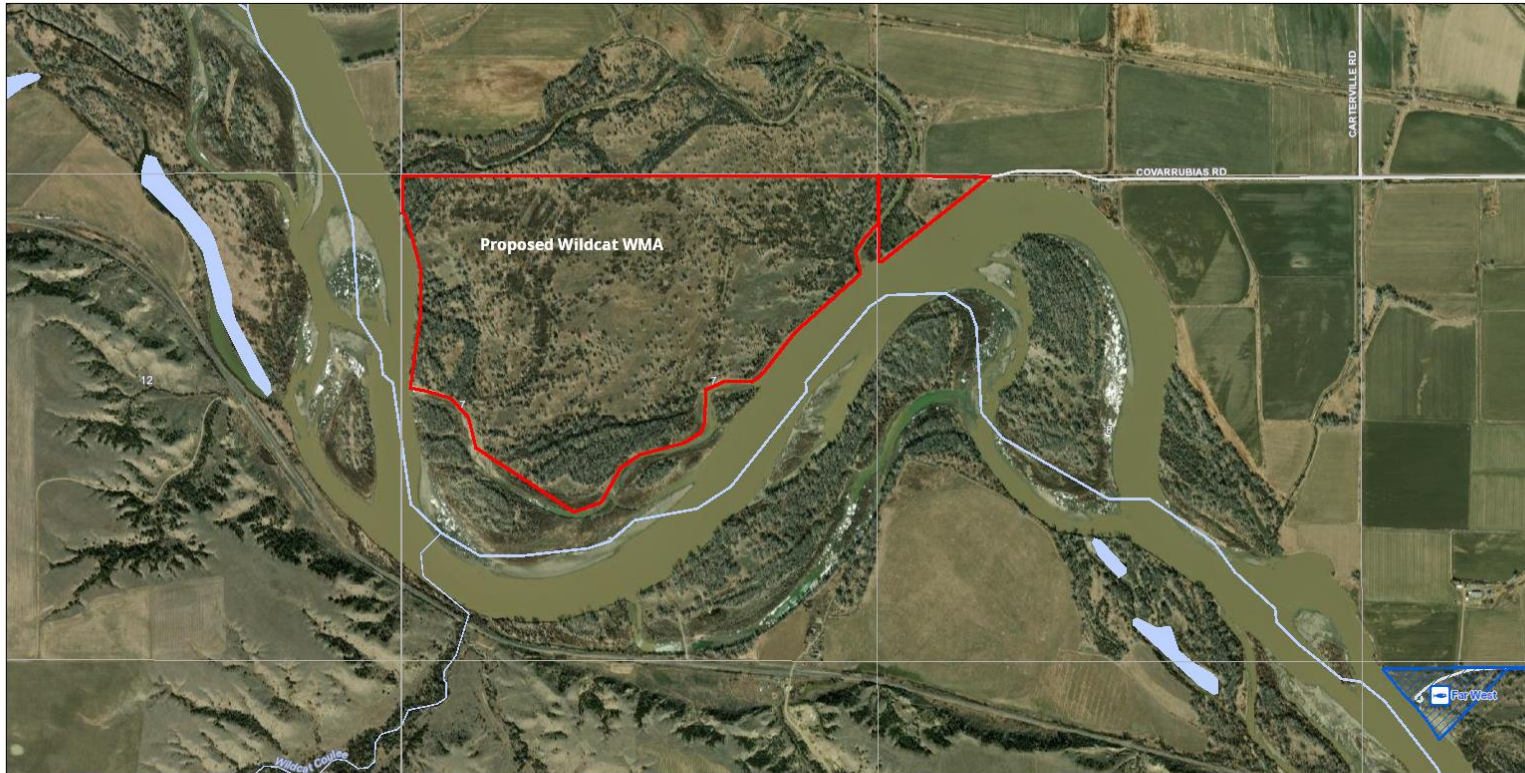
Printed from fwp.mt.gov
December 29, 2021





This map was generated from the Montana Fish, Wildlife & Parks (FWP) internal FWP Mapper online mapping system. Data layers on this map may depict sensitive species level information. This map is not intended for distribution or use beyond work associated with FWP.

Some layers may not appear in the legend due to page size limitations.



Image 2:



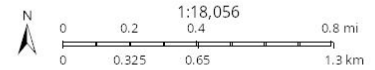
Fishing Access Site Locations

-  HUNTING ALLOWED
-  NO HUNTING

Fishing Access Site Boundaries

-  HUNTING ALLOWED
-  NO HUNTING

Printed from fwp.mt.gov
December 29, 2021



This map was generated from the Montana Fish, Wildlife & Parks (FWP) internal FWP Mapper online mapping system. Data layers on this map may depict sensitive species level information. This map is not intended for distribution or use beyond work associated with FWP.

Some layers may not appear in the legend due to page size limitations.

Image 3: