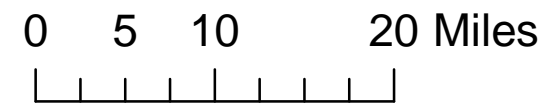
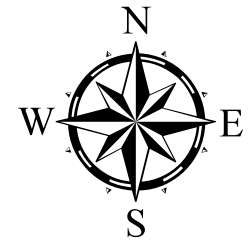
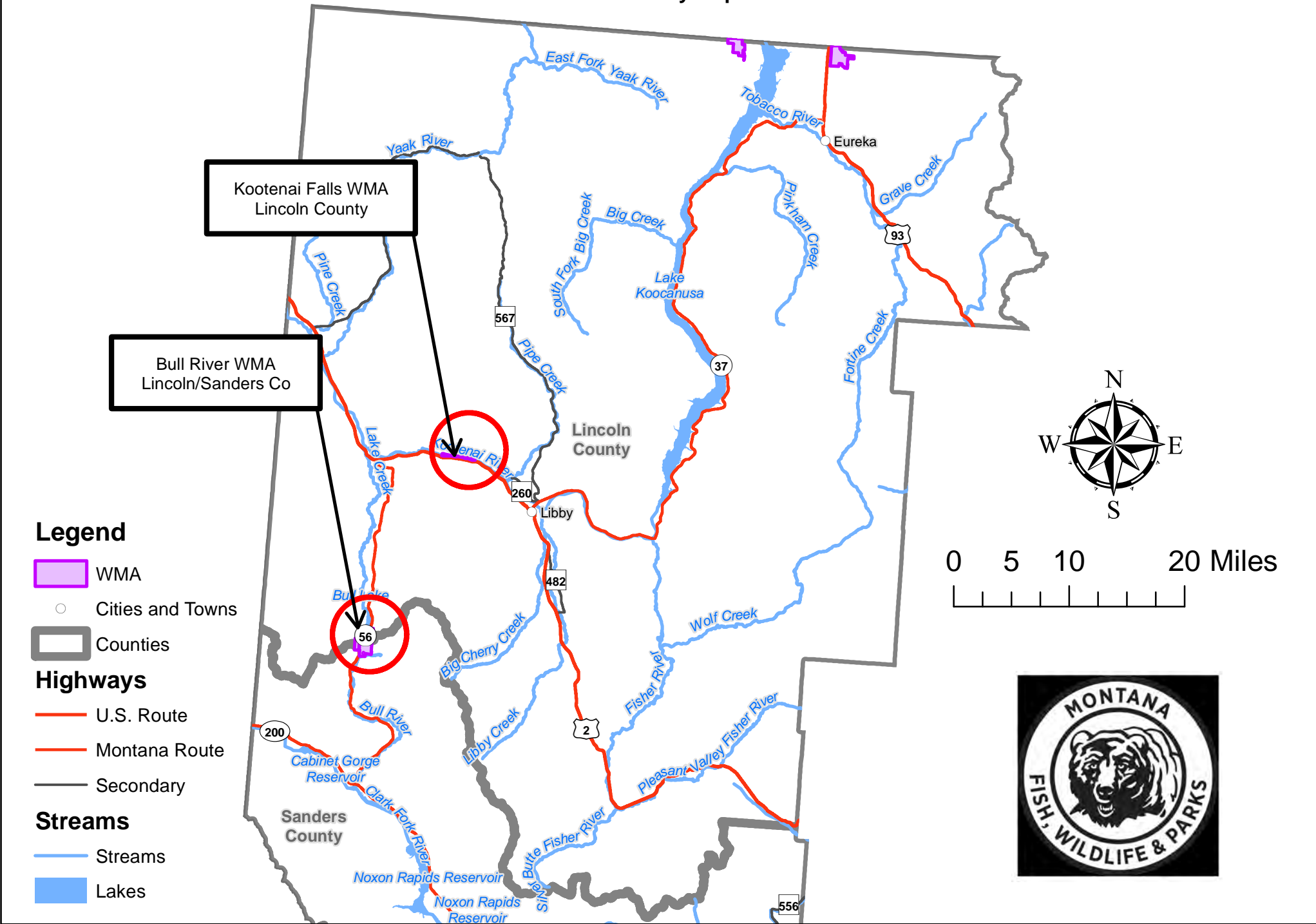
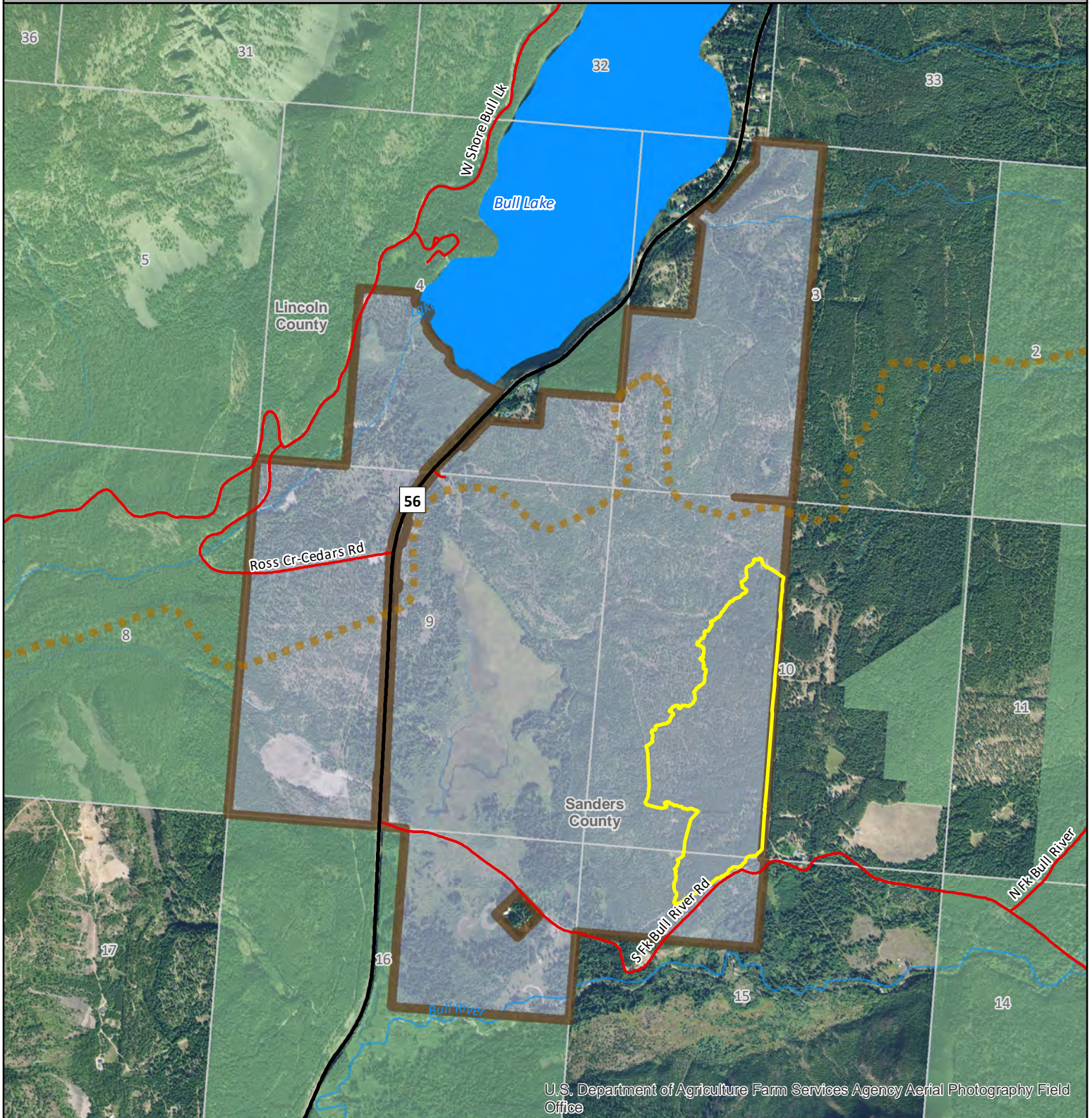


BULL RIVER & KOOTENAI FALLS WMA BLOWDOWN SALVAGE

Vicinity Map





U.S. Department of Agriculture Farm Services Agency Aerial Photography Field Office

- Proposed Project Area
- Wildlife Management Area Boundary
- Counties
- US Forest Service
- Montana Fish, Wildlife & Parks

Scale = 1:24,000



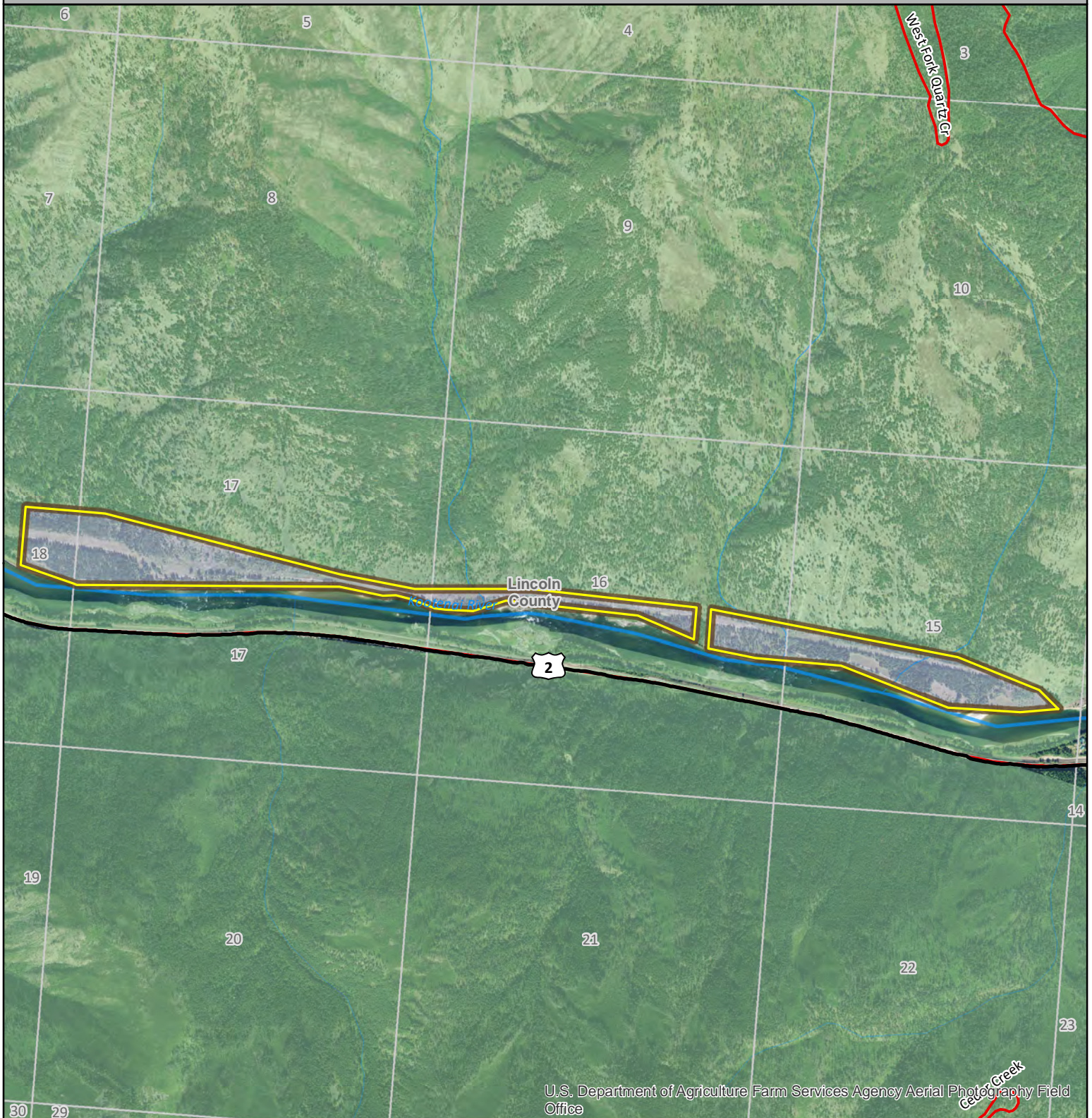
Map Produced by: Jason Parke, FWP Forester
Habitat Bureau/Wildlife Division
Bull River WMA Proposed Project Area
May 20, 2021

Area of Interest



0 1,500 3,000
Feet

Proposed Project Area Map



- Proposed Project Area
- Wildlife Management Area Boundary
- Counties
- US Forest Service
- Montana Fish, Wildlife & Parks

Scale = 1:24,000



Map Produced by: Jason Parke, FWP Forester
Habitat Bureau/Wildlife Division
Kootenai Falls WMA Proposed Project Area
May 20, 2021





Figure 1 - Bull River WMA, lodgepole pine blowdown. April 22, 2021



Figure 2 - Bull River WMA, lodgepole pine blowdown. April 22, 2021



Figure 3 - Bull River WMA, quaking aspen being overtaken by conifers. April 22, 2021



Figure 4 - Kootenai Falls WMA, Douglas-fir blowdown across road. May 5, 2021



Figure 5 - Kootenai Falls WMA, ponderosa pine blowdown. May 5, 2021