

Mt Jumbo WMA and surrounding landownership

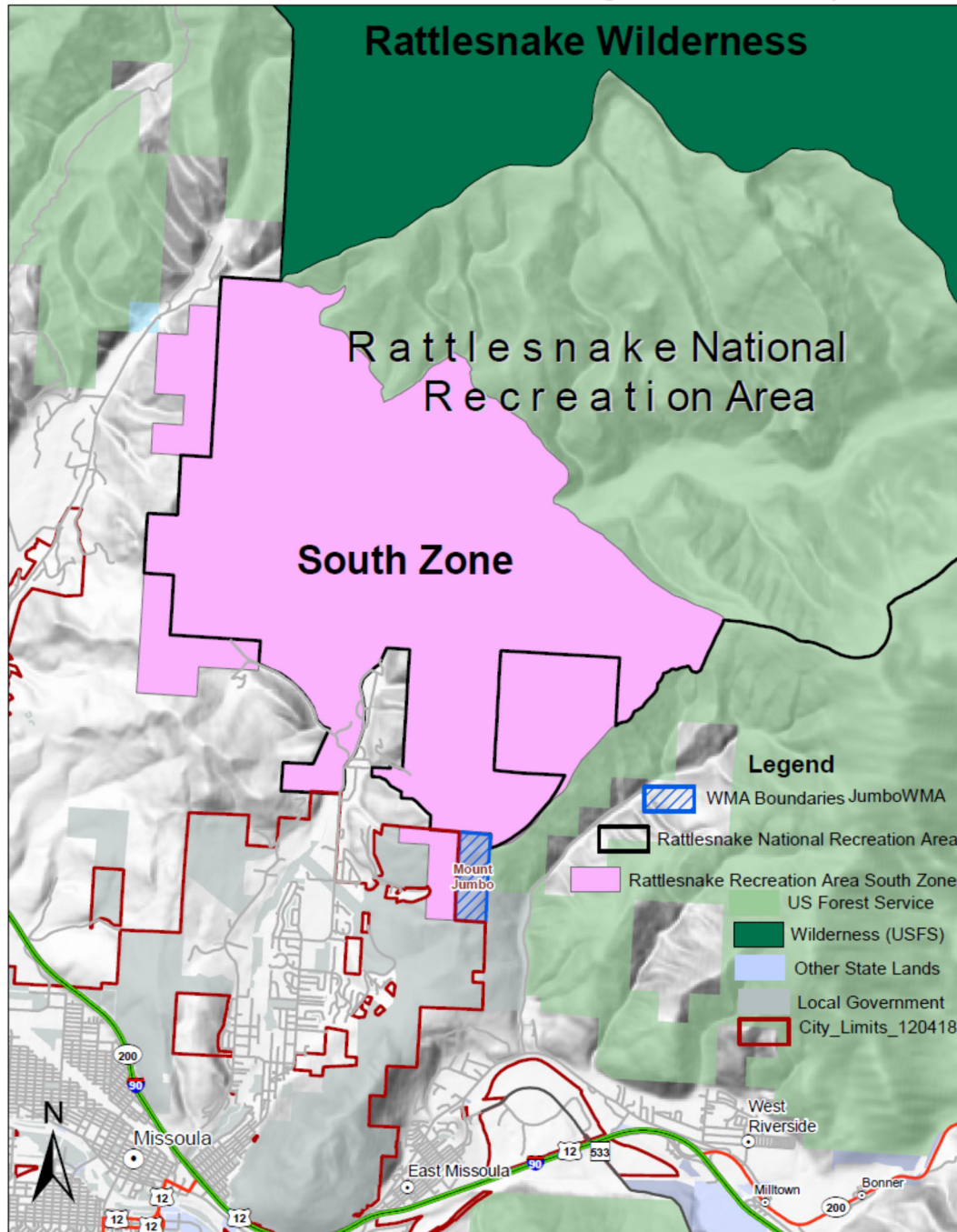


Figure 1. Location of the 120-acre Mt. Jumbo Wildlife Management Area in relation to surrounding ownerships and associated weapon restricted areas. The red bounded area is the Missoula City limits where no hunting is allowed; the pink lands to the north of the WMA and grey shaded lands along the southeast boundary of the WMA are restricted to archery-only. A system of popular trails extends from city and USFS lands across the WMA, including nearly 2 miles of trails on the WMA proper. The WMA and lands to the south and west are part of a public use winter closure area to provide secure big game winter range.