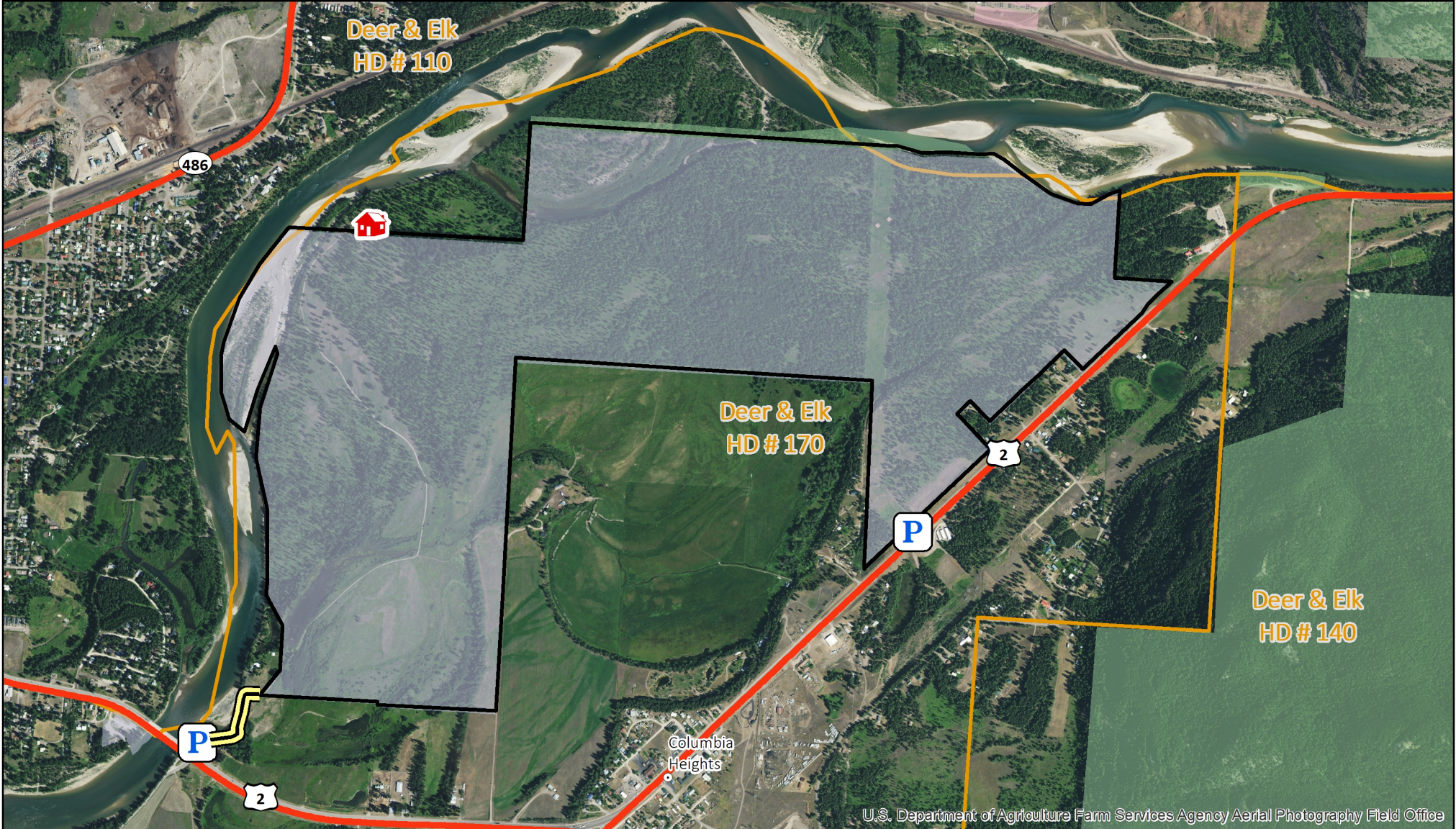


Badrock Canyon WMA

MONTANA FWP

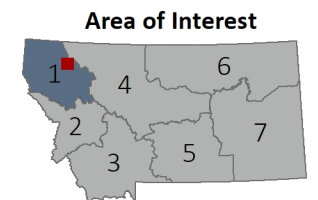
WMA Rules - Walk-in only, Parking by Hwy 2 at River Road or BPA powerline corridor. See reverse page for additional details



U.S. Department of Agriculture Farm Services Agency Aerial Photography Field Office

- WMA Boundary
- Hunting Districts (Deer, Elk, Lion)
- Parking
- Private Cabin
- Other Federal Land
- US Forest Service
- Montana Fish, Wildlife & Parks

N
Date: 9/22/2022
FWP Region 1



0 0.125 0.25
Miles

BAD ROCK CANYON WMA

Deer/Elk Hunting District: 170

Access Dates: WMA Recreational access (including fishing) is open to the public from noon May 15th to the start of the youth hunt opener in late October.

GENERAL INFORMATION

Acres	County	Ownership
900	Flathead	Fish, Wildlife & Parks

PERMISSION REQUIREMENTS

1. Advanced written permission is required, access will be granted by lottery drawing. To enter the lottery drawings, complete an application found on fwp.mt.gov or contact the FWP Region 1 Office (406) 752-5501. Any leftover dates after drawing(s) will be issues first come first served.
2. **Spring Turkey:** The WMA will be open from noon, May 15th to season close; by random lottery. Access will be awarded to a single party (party no more than 3), and access will be granted for a period of two consecutive days. **ONLY OPEN TO APPRENTICE AND YOUTH HUNTERS AGES 10-15 AND HUNTERS WITH A PERMIT TO HUNT FROM A VEHICLE.** To enter the drawing, complete an application during the month of April by contacting the FWP Region 1 Office (406) 752-5501. Successful applicants will be notified during the first week of May. **Spring Bear hunting is prohibited.**
3. **Archery Season:** All species may be hunted on this WMA with valid licenses during this season, archery equipment only. Access will be granted by lottery drawing and awarded to up to two individuals per week. **OPEN THURSDAY- SUNDAY AND MONDAY HOLIDAYS.** No youth preference. To enter the drawing, complete an application during the month of July by contacting the FWP Region 1 Office (406) 752-5501. Successful applicants will be notified during the first week of August.
4. **Youth 2 Day Deer Hunt and General Rifle Season:** All species may be hunted on this WMA with valid licenses during this season. Access will be granted by lottery drawing and awarded to a single party (party of no more than 3) for a single day. **ONLY OPEN TO APPRENTICE AND YOUTH HUNTERS AGES 10-15 AND HUNTERS WITH A PERMIT TO HUNT FROM A VEHICLE, THURSDAY- SUNDAY AND MONDAY HOLIDAYS.** To enter the drawing, complete an application during the month of September by contacting the FWP Region 1 Office (406) 752-5501. Successful applicants will be notified during the first week of October.

HOW TO GET THERE

Located east of Columbia Falls along the Flathead River.

» Access from designated parking areas off Hwy 2.

ADDITIONAL RULES

1. Hunters are required to access the WMA from designated parking areas.
2. Motorized vehicle use is restricted to designated access routes, public roads and parking areas on WMA map or otherwise posted. All other motorized vehicle use is prohibited.
3. Non-motorized use is open only to foot, horseback, and non-motorized bicycle from designated parking areas.
4. Camping, fires, and wood cutting prohibited.
5. Littering prohibited. Pack it in, pack it out.
6. Commercial outfitting is prohibited.
7. Please practice "Leave No Trace" principles.
8. Fish & Wildlife Commission-approved hunting regulations apply. Hunters are required to possess the necessary hunting licenses for the species and hunting districts they are hunt.



REGION 1 OFFICE

490 North Meridian Rd, Kalispell, MT 59901
Phone: (406) 752-5501
M - F, 8AM - 5PM (excluding holidays)

FAILURE TO ABIDE BY THESE RULES MAY RESULT IN EVICTION FROM THIS PROPERTY AND/OR A CITATION FOR FAILURE TO OBTAIN LANDOWNER PERMISSION FOR HUNTING.

REPORT VIOLATIONS: 1-800-TIP-MONT