

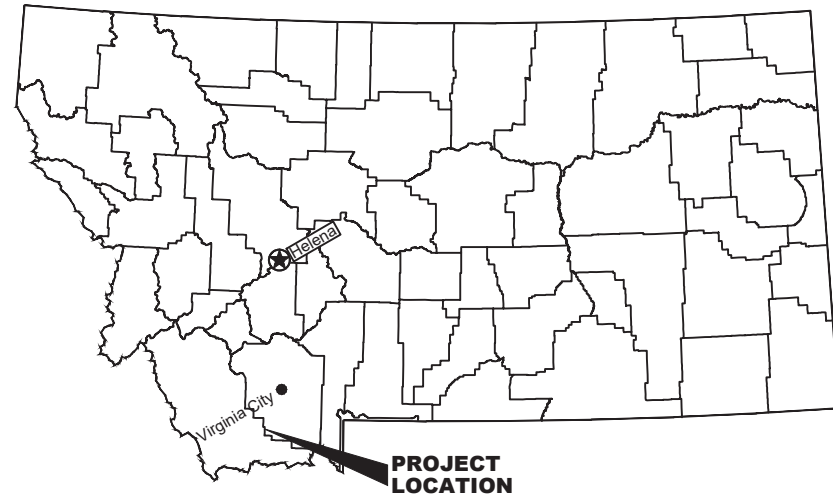
MONTANA FISH, WILDLIFE & PARKS

ROBB-LEDFORD WMA

HONEYMOON SPRINGS FENCE REPLACEMENT

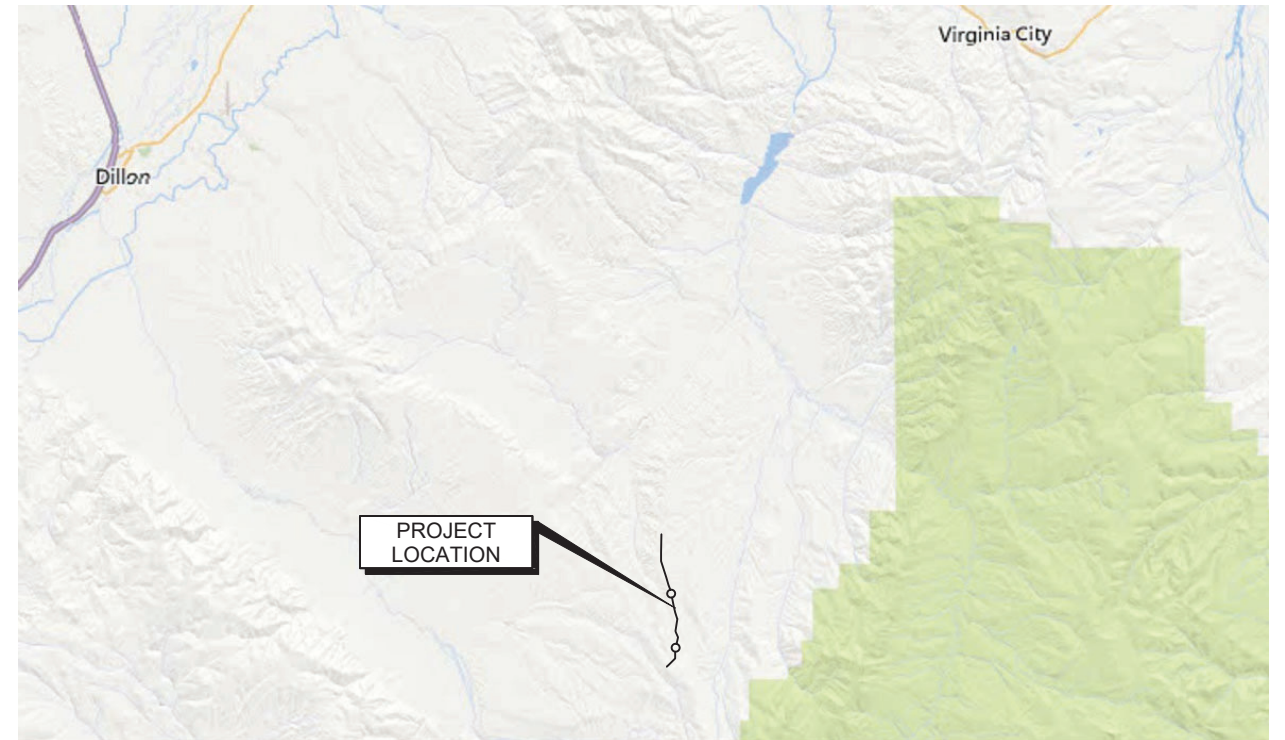
BEAVERHEAD COUNTY, MT

FWP PROJECT NO. - 72352305



LOCATION MAP

NO SCALE



VICINITY MAP

NO SCALE

NORTH



MONTANA FISH, WILDLIFE AND PARKS DESIGN AND CONSTRUCTION

MAILING ADDRESS:

PO BOX 200701
HELENA, MT 59620-0701

TEL 406.841.4010

FAX 406.841.4004

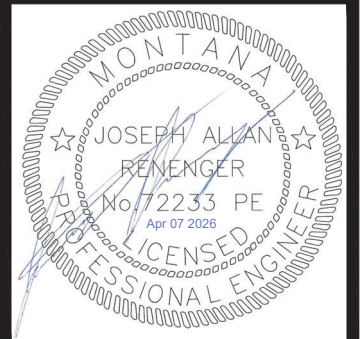
fwp.mt.gov/Doing Business/Design&Construction

PHYSICAL ADDRESS:

1522 9th AVENUE
HELENA, MT 59601

DRAWING INDEX

<u>SHEET</u>	<u>DESCRIPTION</u>
1	COVER SHEET
2	SITE MAP & CONSTRUCTION NOTES
3	FENCE SITE MAP 1 OF 2
4	FENCE SITE MAP 2 OF 2
5	CONSTRUCTION DETAILS



J. MANGUM MARCH 2026
DRAWN BY: DATE:

J. RENENGER MARCH 2026
CHECKED BY: DATE:

APPROVED BY: DATE:

APPROVED BY: DATE:

APPROVED BY: DATE:

APPROVED BY: DATE:

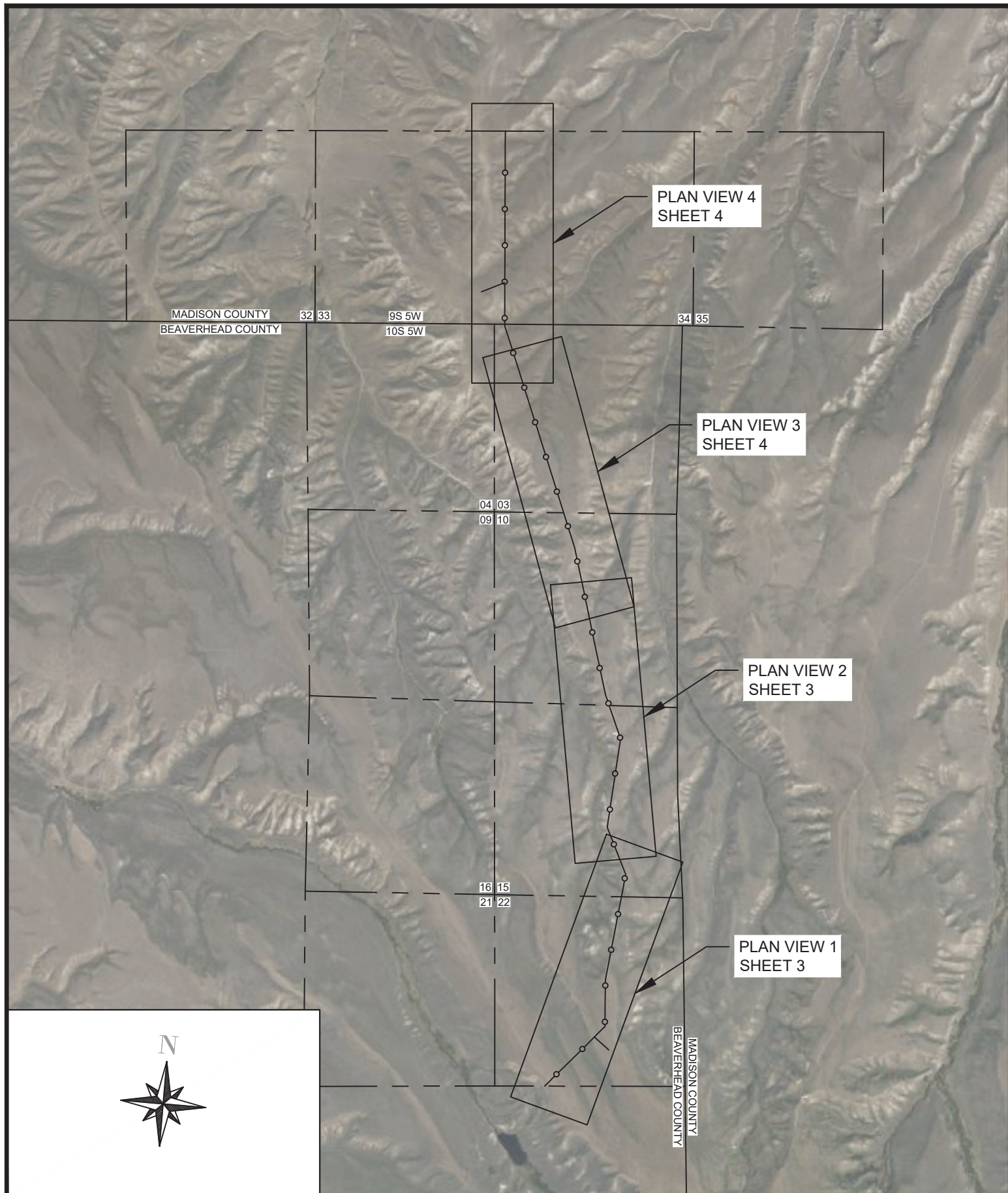


**MONTANA FISH,
WILDLIFE & PARKS**

108

ROBB-LEDFORD WMA FENCE REPLACEMENT
COVER SHEET

SHEET: 1 OF 5



CONSTRUCTION NOTES:

1. THE PROJECT IS LOCATED IN BOTH BEAVERHEAD COUNTY AND MADISON COUNTY, COVERING MULTIPLE SECTIONS WITHIN BOTH TOWNSHIP 9 SOUTH, RANGE 5 WEST AND TOWNSHIP 10 SOUTH, RANGE 5 WEST, MONTANA BASELINE AND PRINCIPAL MERIDIAN.
2. THE SECTION AND COUNTY LINES SHOWN ARE APPROXIMATE AND ARE FOR GENERAL REFERENCE ONLY.
3. THE CONTRACTOR SHALL COORDINATE STAGING AREAS WITH THE LOCAL FWP MAINTENANCE TEAM PRIOR TO CONSTRUCTION.
4. THE FENCE REPLACEMENT WILL BE REPLACING ALONG THE EXISTING ALIGNMENT AND WILL NOT DEVIATE FROM IT.

J. MANGUM MARCH 2026
 DRAWN BY: DATE:

J. RENENGER MARCH 2026
 CHECKED BY: DATE:

APPROVED BY: DATE:
 APPROVED BY: DATE:

APPROVED BY: DATE:
 APPROVED BY: DATE:

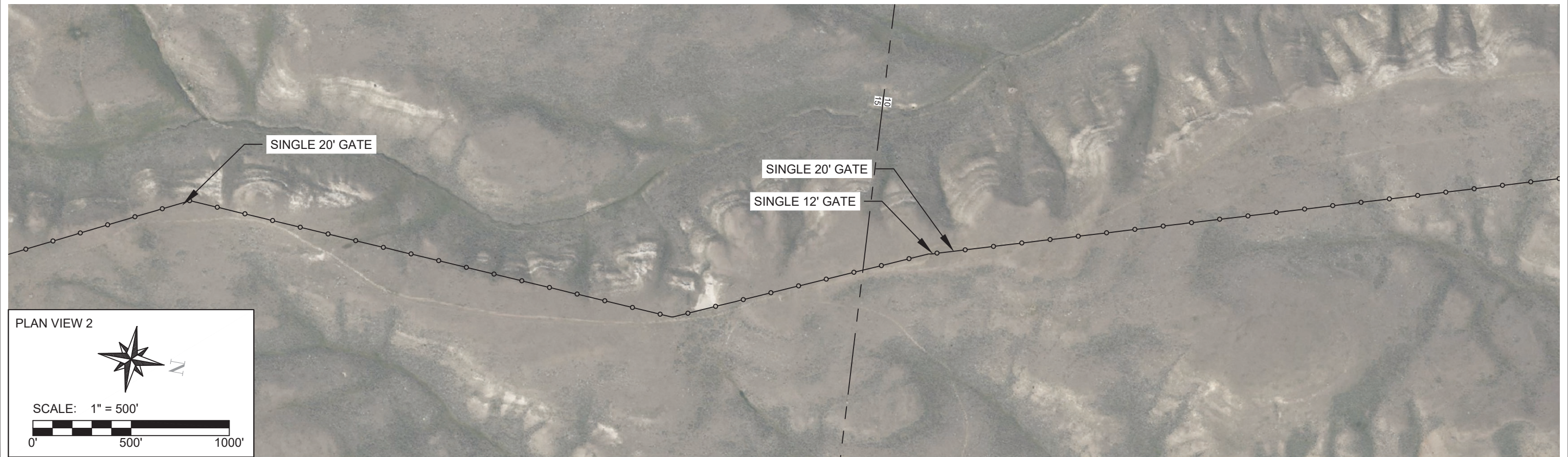
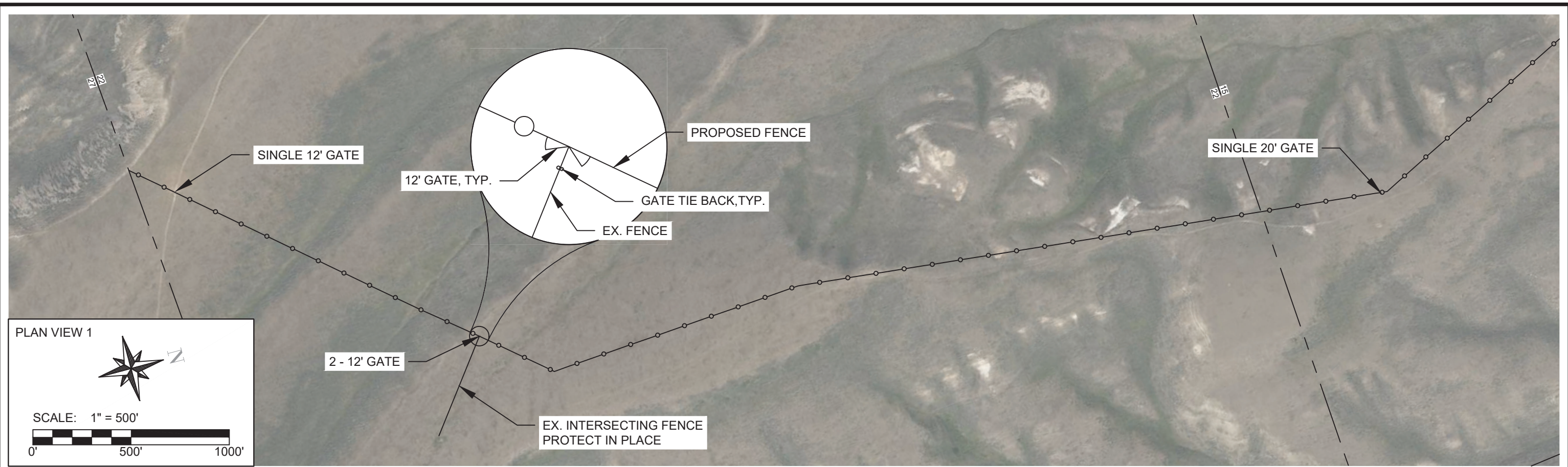


**MONTANA FISH,
 WILDLIFE & PARKS**

109

**ROBB-LEDFORD WMA FENCE REPLACEMENT
 SITE MAP & CONSTRUCTION NOTES**

SHEET: **2**
 OF **5**



J. MANGUM MARCH 2026
 DRAWN BY: DATE:

J. RENENGER MARCH 2026
 CHECKED BY: DATE:

APPROVED BY: DATE:

APPROVED BY: DATE:

APPROVED BY: DATE:

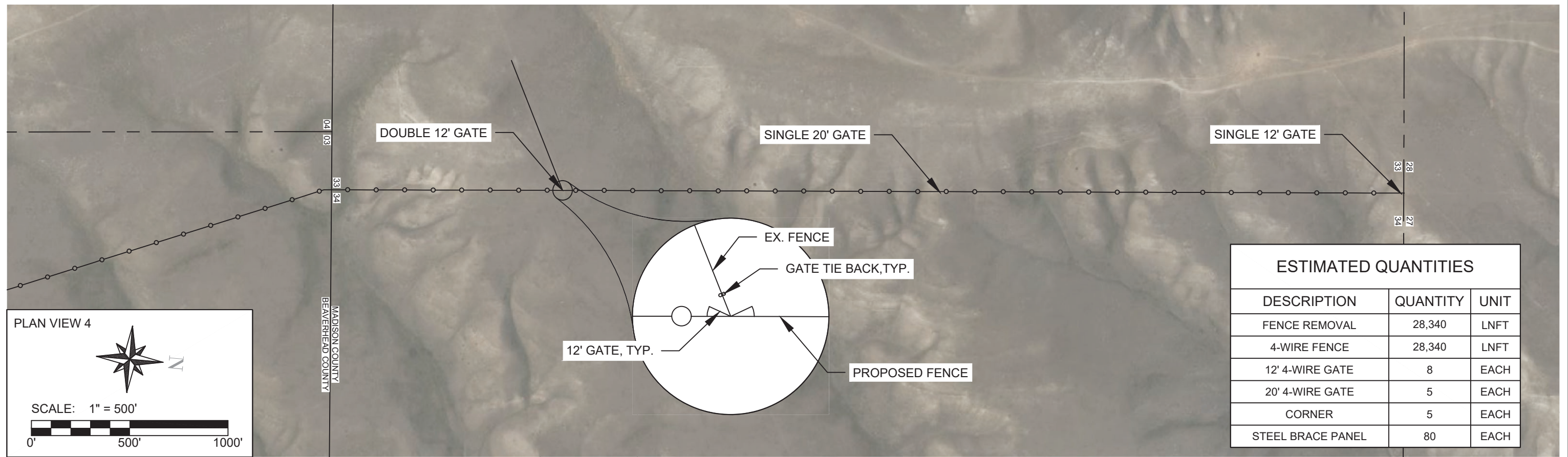
APPROVED BY: DATE:



**MONTANA FISH,
 WILDLIFE & PARKS**

**ROBB-LEDFORD WMA FENCE REPLACEMENT
 FENCE SITE MAP 1 OF 2**

SHEET: 3 OF 5



ESTIMATED QUANTITIES		
DESCRIPTION	QUANTITY	UNIT
FENCE REMOVAL	28,340	LNFT
4-WIRE FENCE	28,340	LNFT
12' 4-WIRE GATE	8	EACH
20' 4-WIRE GATE	5	EACH
CORNER	5	EACH
STEEL BRACE PANEL	80	EACH

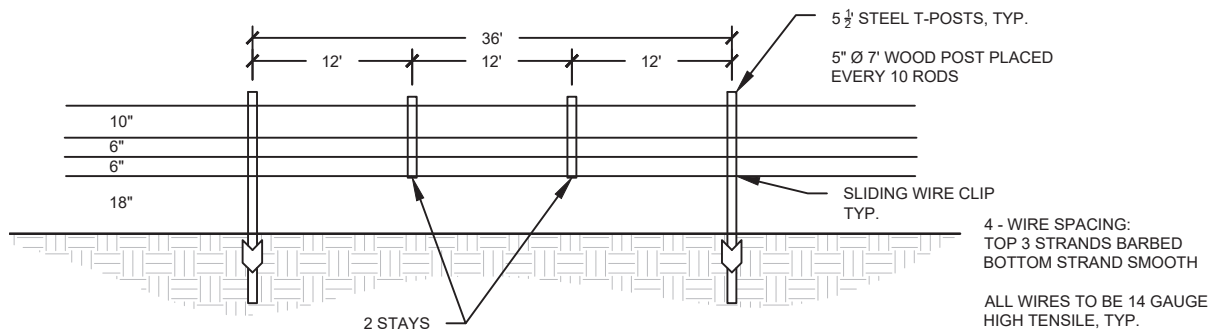
J. MANGUM MARCH 2026
 DRAWN BY: DATE:
 J. RENENGER MARCH 2026
 CHECKED BY: DATE:

APPROVED BY: DATE:
 APPROVED BY: DATE:

APPROVED BY: DATE:
 APPROVED BY: DATE:

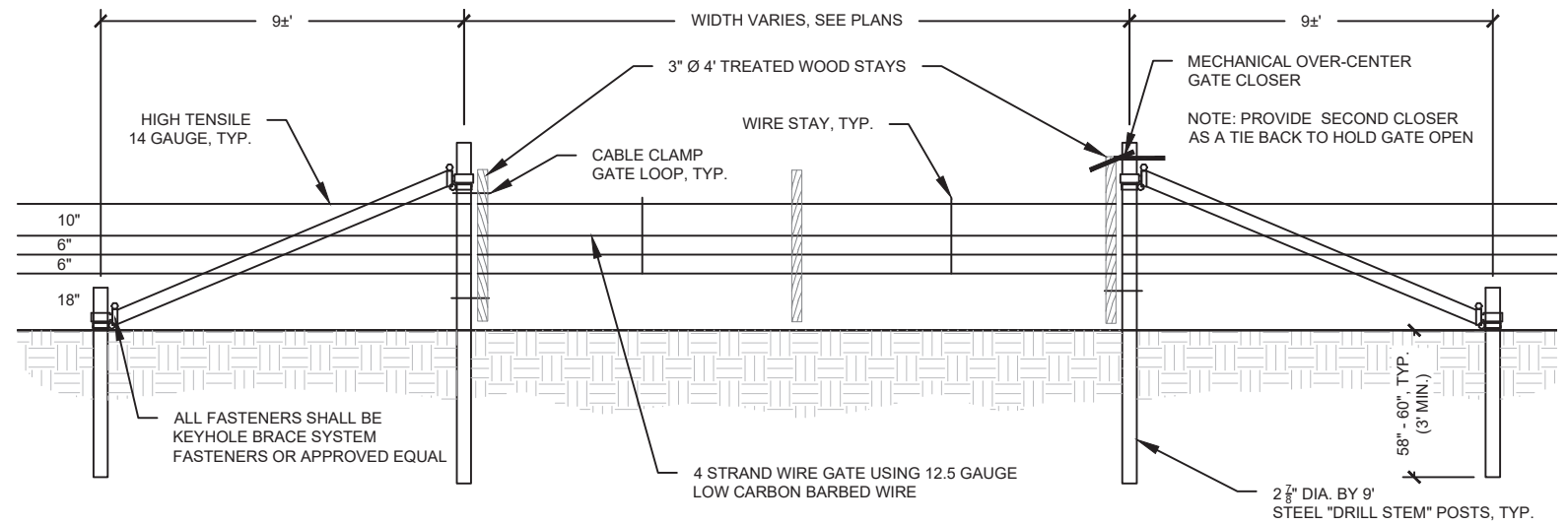


**ROBB-LEDFORD WMA FENCE REPLACEMENT
 FENCE SITE MAP 2 OF 2**



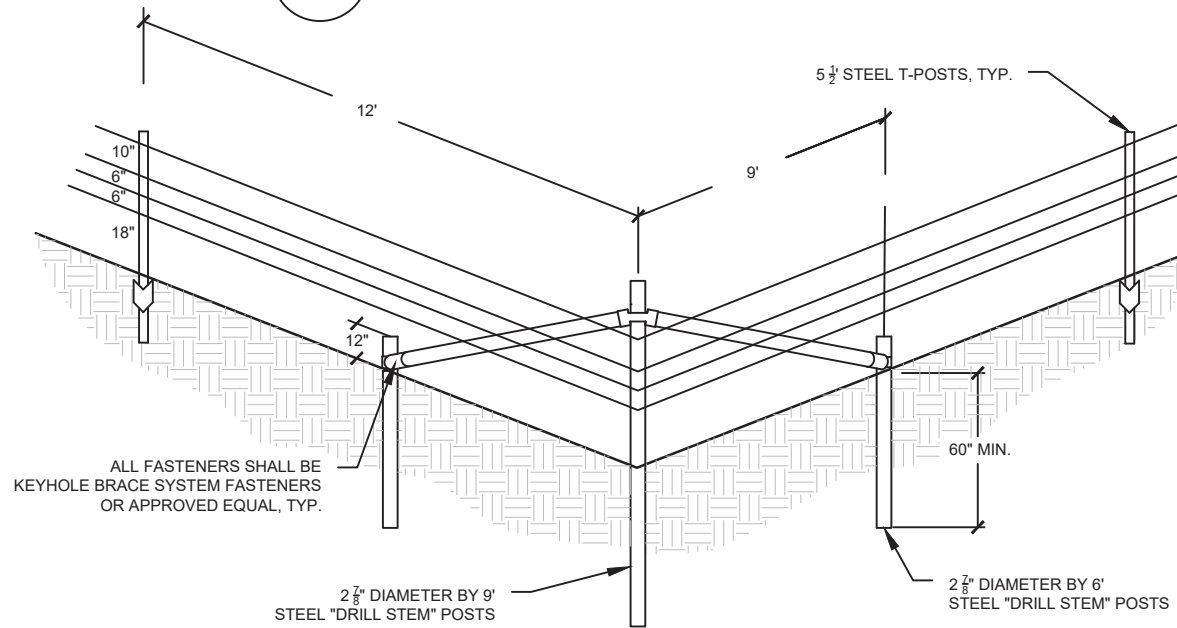
1 4 WIRE HIGH TENSILE FENCE

SCALE: NTS



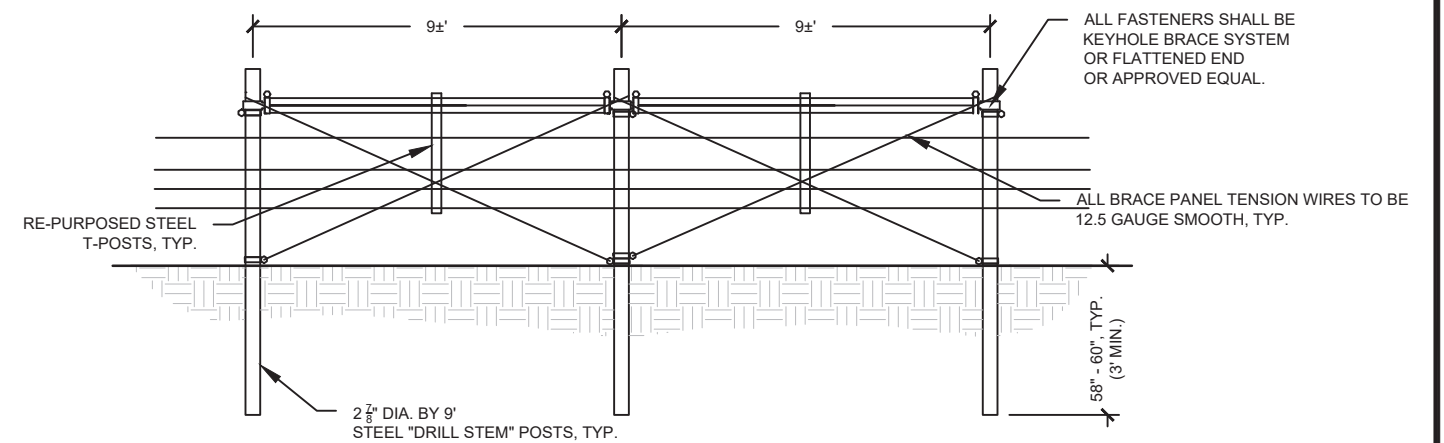
2 WIRE GATE (WIDTH VARIES)

SCALE: NTS



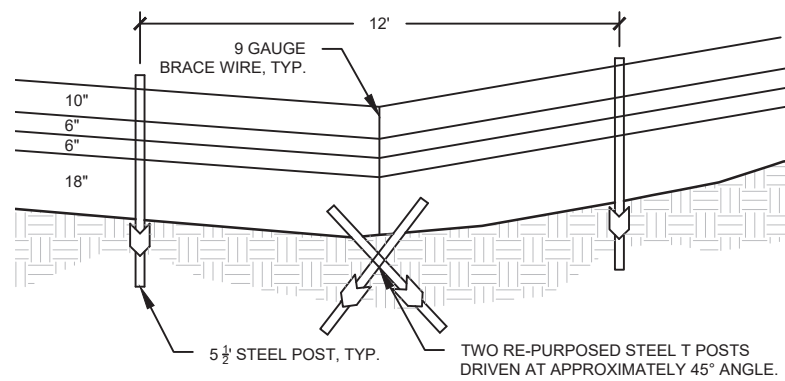
3 TYPICAL CORNER

SCALE: NTS



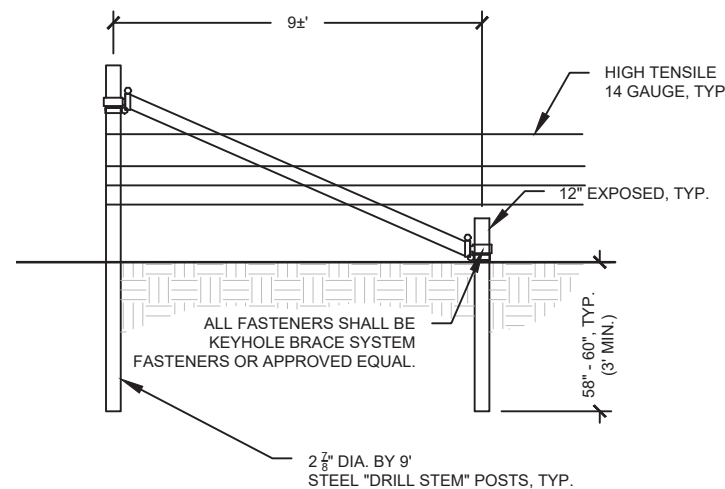
4 3-POST PANEL

SCALE: NTS



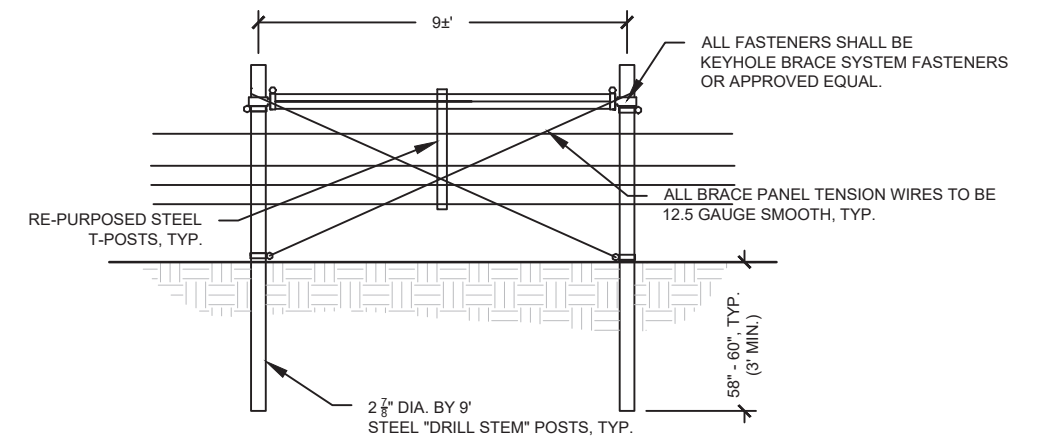
5 TYPICAL DEADMAN ANCHOR

SCALE: NTS



6 SINGLE LEG END PANEL

SCALE: NTS



7 2-POST PANEL

SCALE: NTS

J. MANGUM MARCH 2026
DRAWN BY: DATE:
J. RENENGER MARCH 2026
CHECKED BY: DATE:

APPROVED BY: DATE:
APPROVED BY: DATE:

APPROVED BY: DATE:
APPROVED BY: DATE:



**MONTANA FISH,
WILDLIFE & PARKS**

112

**ROBB-LEDFORD WMA FENCE REPLACEMENT
CONSTRUCTION DETAILS**

SHEET: **5**
OF
5