

K:\Sheridan\Montana Fish, Wildlife and Parks\2022097 TRRSP Diversified Lodging\CADD\Drawings\PROJECT_A\PLAN_SET\202097_PRT2_COVR_SHT.dwg COVER 12/4/2023 2:52:00 PM

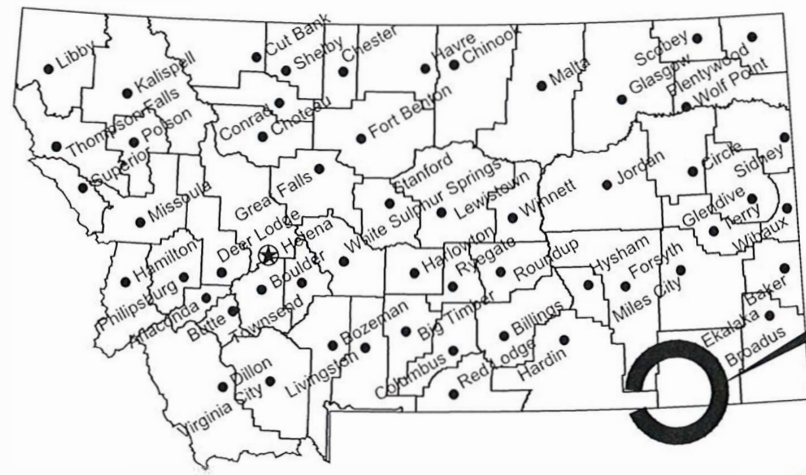
MONTANA FISH, WILDLIFE & PARKS

TONGUE RIVER RESERVOIR STATE PARK

DIVERSIFIED LODGING

near Decker, Big Horn County, Montana

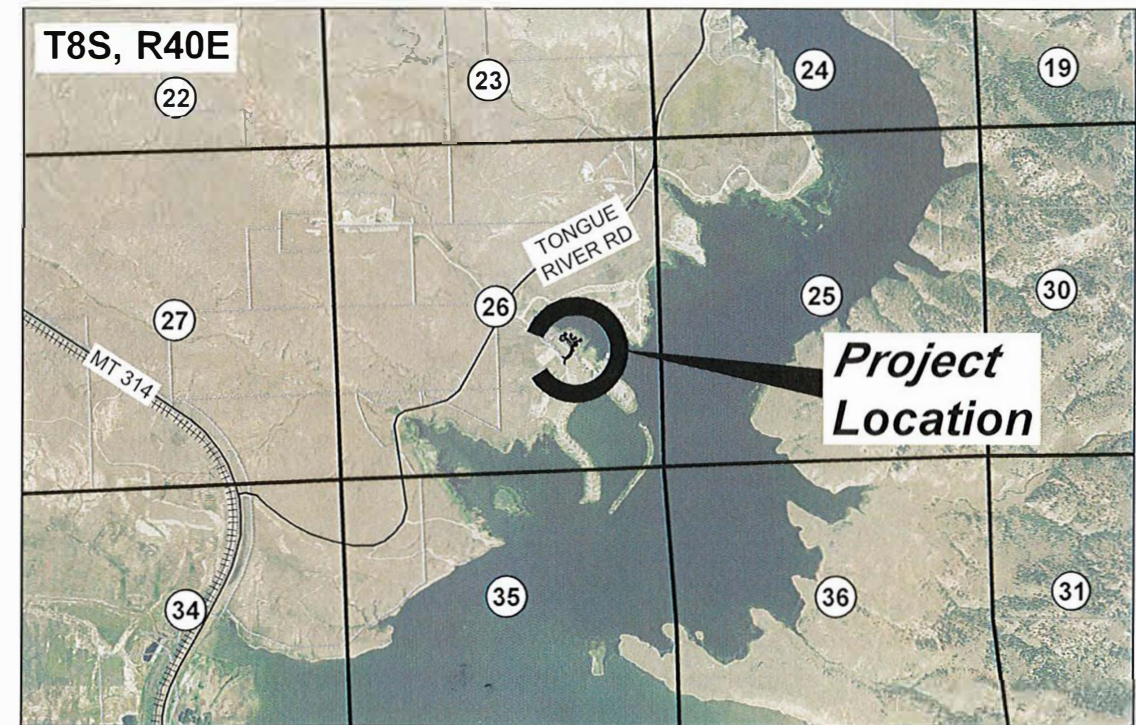
FWP PROJECT # 7216211



Location Map

NOT TO SCALE

Project Location



Vicinity Map

0 1500' 3000'
SCALE: 1" = 3000'
11" x 17" PAPER SIZE



WWC ENGINEERING
1849 TERRA AVENUE, SHERIDAN, WY 82801 (307) 672-0761



**MONTANA FISH, WILDLIFE AND PARKS
DESIGN AND CONSTRUCTION**

MAILING ADDRESS: PO BOX 200701
HELENA, MT 59620-0701
TEL 406.841.4000
FAX 406.841.4004
fwp.mt.gov/Doing Business/Design&Construction

PHYSICAL ADDRESS: 1522 9th AVENUE
HELENA, MT 59601

DRAWING INDEX

Sheet List Table		DRAWING INDEX	
Sheet Number	Sheet Title		
1	COVER SHEET	6	PROPOSED ACCESS ROAD DESIGN
2	LEGEND & GENERAL NOTES	7	CULVERT DETAIL
3	QUANTITIES & TYPICALS	8	PROPOSED PARKING DESIGN
4	SITE POINTS	9	PROPOSED PARKING DESIGN
5	SITE LAYOUT	10	PROPOSED PARKING DESIGN
		11	LODGE SITE LAYOUT
		12	LODGE SITE LAYOUT
		13	LODGE SITE LAYOUT
		14	LODGE SITE LAYOUT
		15	LODGE SITE LAYOUT
		E-1	LODGE SITE LAYOUT
		E-2	LODGE SITE LAYOUT



CIG	9/1/2023	GCD	12/4/2023	APPROVED BY	DATE
DRAWN BY	DATE	REVISD BY	DATE		
DJB	9/1/2023	DEJ	12/4/2023	APPROVED BY	DATE
CHECKED BY	DATE	APPROVED BY	DATE		



MONTANA FISH, WILDLIFE & PARKS

**TONGUE RIVER RESERVOIR STATE PARK
DIVERSIFIED LODGING - COVER SHEET**

SHEET: 1 of 15

k:\Sheridan\montana_fish_wildlife_and_parks\2022097_trsp_diversified_lodging\05CAD\Sheets\project_2\PLAN_SET\2023_09\PRJT2_COVR_SHT.dwg LEGEND 12/4/2023 2:18:51 PM

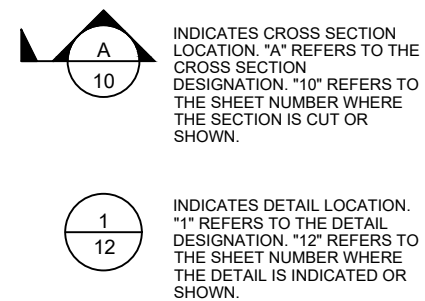
GENERAL CONSTRUCTION NOTES

1. CONTRACTOR SHALL COORDINATE ACCESS ROUTE AND STAGING AREA WITH PROJECT MANAGER OR PARKS MANAGER.
2. CONTRACTOR SHALL COORDINATE DELIVERY AND INSTALLATION TO ELIMINATE THE NEED TO STORE ON SITE.
3. CONTRACTOR SHALL STAKE PAD CORNERS AND BE APPROVED BY PROJECT MANAGER PRIOR TO CONSTRUCTION.
4. CONTRACTOR SHALL SUBMIT CABIN DELIVERY AND INSTALLATION PLAN ON CABINS TO PROJECT MANAGER FOR APPROVAL. SEE SPECIFICATIONS FOR REQUIREMENTS.
5. DISTURBED AREAS SHALL BE RECLAIMED AND RE-SEEDED WITH GRASS MIX APPROVED BY PROJECT MANAGER OR PARKS MANAGER.
6. SEALED (VAULT) PIT PRIVY "ASPEN" MODEL LATRINE AS SOLD BY MISSOULA CONCRETE, MISSOULA, MT APPROVED EQUAL. "ASPEN" MODEL IS USED FOR REFERENCE (DUE TO AVAILABILITY). AN APPROVED EQUAL IS REQUIRED. SEE SPECIFICATIONS FOR REQUIREMENTS.
7. CONTRACTOR'S RESPONSIBILITY TO ENSURE SITE #1 AND SITE #4 MEETS ADA COMPLIANCE.
8. CABINS TO BE TWO ROOM, GABLE ROOF STYLE STRUCTURES AS SOLD BY PRAIRIE KRAFT SPECIAL TIES, GREAT FALLS, MT, OR APPROVED EQUAL. SEE PROJECT SPECIFICATIONS FOR FURTHER REQUIREMENTS. CABINS TO BE DELIVERED FULLY ASSEMBLED.
9. UP TO TWO TONS OF EXTRA MATERIAL MAY BE STOCKPILED AT THE PARK MAINTENANCE SHOP. MATERIAL IN EXCESS OF TWO TONS IS CONTRACTOR'S RESPONSIBILITY TO REMOVE FROM PROJECT SITE.
10. SIDEWALK FROM PARKING AREA TO SEALED (VAULT) PIT PRIVY TO BE 4-INCH CONCRETE. SEE DETAILS.
11. LODGE SITE #4 PARKING AREA TO BE 6-INCH PORTLAND CEMENT CONCRETE PAVEMENT (CONCRETE). SEE DETAILS.
12. SURFACING FOR ACCESS ROAD, LODGE SITES, AND PATHWAYS SHALL BE 1" MINUS CRUSHED GRAVEL OR APPROVED EQUAL. SEE SPECIFICATIONS.
13. TRAFFIC BARRIER SHALL BE PLACED ALONG INSIDE EDGE OF ROUNDABOUT TO PREVENT VEHICLE PARKING. APPROVAL FROM PROJECT MANAGER PRIOR TO INSTALLING. INCIDENTAL TO BID ITEMS.
14. PARKING BLOCKS SHALL BE PLACED AT EACH DESIGNATED PARKING SPOT ON THE NORTH AND SOUTH PARKING AREAS FOLLOWING MFWP SPATIAL STANDARDS. INCIDENTAL TO BID ITEMS.
15. REFER TO MONTANA PUBLIC WORKS STANDARD SPECIFICATIONS (MPWSS) CURRENT VERSION FOR ANY WORK NOT SPECIFICALLY COVERED IN THE TECHNICAL SPECIFICATIONS AND DRAWINGS.
16. ROADWAY SURFACE TO BE COMPACTED TO DENSITY NO LESS THAN 95% OF MAXIMUM DENSITY AS DETERMINED BY ASTM D-698 (STANDARD PROCTOR).
17. CONTRACTOR SHALL PROVIDE ALL NECESSARY PERMITS AND EROSION CONTROL MEASURES.
18. STOP SIGN SHALL BE INSTALLED AT THE INTERSECTION OF THE ACCESS ROAD AND CAMPER'S POINT ROAD. CONTRACTOR SHALL INSTALL PER STATE AND LOCAL GUIDELINES.

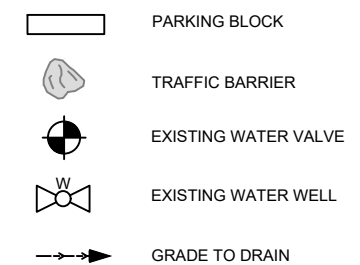
GENERAL ELECTRICAL NOTES

1. UTILITY CONTACT INFORMATION: TONGUE RIVER ELECTRIC COOPERATIVE, INC. (TRECO)
2. TRECO WILL PROVIDE AND INSTALL NEW UTILITY TRANSFORMER, CONCRETE PAD FOR TRANSFORMER AND ALL PRIMARY CONNECTIONS AND SECONDARY CONNECTIONS UP TO METER.
3. CONTRACTOR PROVIDE AND INSTALL CT ENCLOSURE TO MEET TRECO STANDARDS.
4. CONTRACT PROVIDE AND INSTALL METER BASE TO MEET TRECO STANDARDS.
5. CONTRACTOR PROVIDE AND INSTALL EQUIPMENT TO BE LOCATED NEAR NEW UTILITY TRANSFORMER.
6. CONTRACTOR TO PROVIDE MINIMUM (6) SPARE 100AMP/2P BRANCH CIRCUIT BREAKERS, (6) 60AMP/2P BRANCH CIRCUIT BREAKERS, AND (6) 20AMP/1P IN MOP-1 IN ADDITION TO THOSE SHOWN IN PLANS.
7. MAIN DISCONNECT IS REQUIRED AT EACH CABIN LOCATION PER MONTANA DEPARTMENT OF LABOR & INDUSTRY STANDARDS.
9. CONTRACTOR SHALL BE RESPONSIBLE FOR ALL PERMITS, FEES, CONSTRUCTION/INSTALLATION, AND INSPECTIONS THAT COMPLY WITH STATE AND LOCAL CODE REQUIREMENTS AND COMPLY WITH REQUIREMENTS OF THE UTILITY COMPANIES.

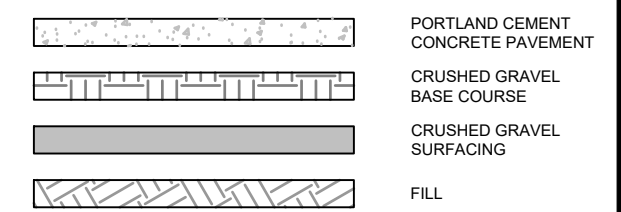
DRAWING NOTATION



BLOCK STYLE LEGEND



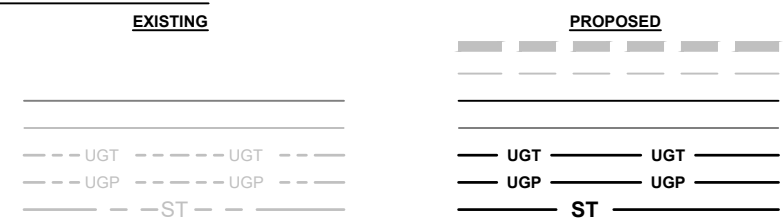
HATCH LEGEND



ABBREVIATIONS

CL	CENTERLINE	INV	INVERT ELEVATION
CMP	CORRUGATED METAL PIPE	LF	LINEAR FEET
CTR	CENTER	MH	MANHOLE
C.Y.	CUBIC YARD	PI	POINT OF INTERSECTION
CULV	CULVERT	POT	POINT ON TANGENT
DIA	DIAMETER	PC	POINT, POINT OF CURVATURE
EA	EACH	PT	POINT, POINT OF TANGENCY
E.F.	EL, ELEVATION	STA	STATION
FT	FOOT OR FEET	TYP	TYPICAL

LINE STYLE LEGEND



CIG	9/1/2023
DRAWN BY:	DATE:
DEB	9/1/2023
CHECKED BY:	DATE:

REVISED BY:	DATE:
APPROVED BY:	DATE:

APPROVED BY:	DATE:
APPROVED BY:	DATE:



MONTANA FISH, WILDLIFE & PARKS

TONGUE RIVER RESERVOIR STATE PARK
DIVERSIFIED LODGING - LEGEND & GENERAL NOTES

SHEET: **2** of **15**

k:\Sheridan\montana fish, wildlife and parks\2022097 trsp diversifed lodging\05CAD\Sheets\project_2\PLAN_SET\22097_PRT2_COVR_SHT.dwg QUANTITIES 12/4/2023 2:18:51 PM

LODGE SITE CRUSHED GRAVEL SURFACING SUMMARY (8")		
ITEM	QUANTITY	UNITS
LODGE SITE #1 ¹	38	C.Y.
LODGE SITE #2 ³	24	C.Y.
LODGE SITE #3 ³	23	C.Y.
LODGE SITE #4 ²	17	C.Y.
LODGE SITE #5 ³	25	C.Y.
TOTAL	127	C.Y.

NOTES:

1. QUANTITY INCLUDES CRUSHED GRAVEL BASE COURSE FOR DRIVEWAY
2. QUANTITY INCLUDES PIT PRIVY BASE COURSE
3. QUANTITY INCLUDES 6" PATHWAY SURFACING

LODGE SITE EARTHWORK SUMMARY		
ITEM	CUT (C.Y.)	FILL (C.Y.)
LODGE SITE #1 ¹	2	136
LODGE SITE #2	32	4
LODGE SITE #3	4	19
LODGE SITE #4 ¹	47	61
LODGE SITE #5	2	10
TOTAL	87	230

NOTES:

1. QUANTITY INCLUDES PARKING RAMP EARTHWORK

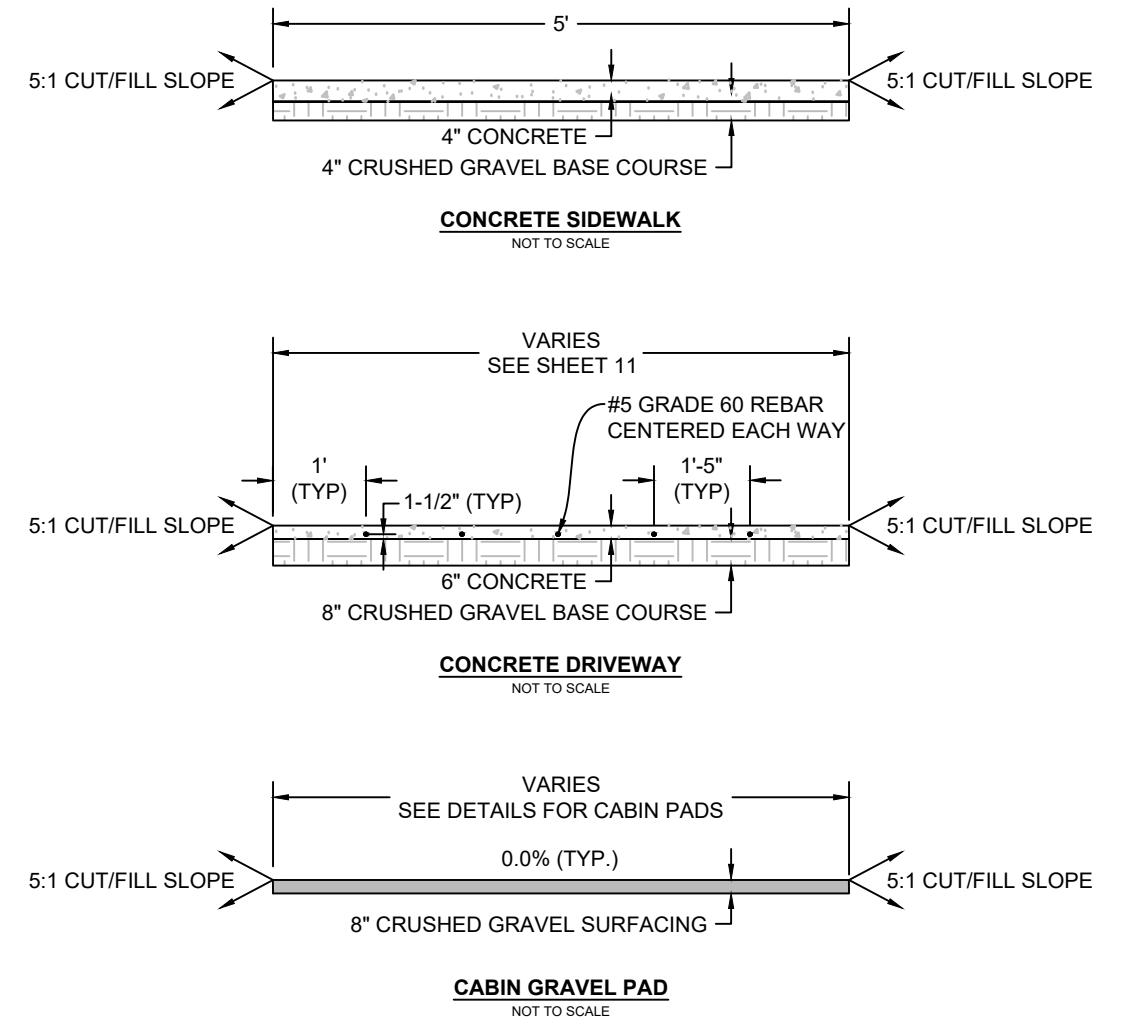
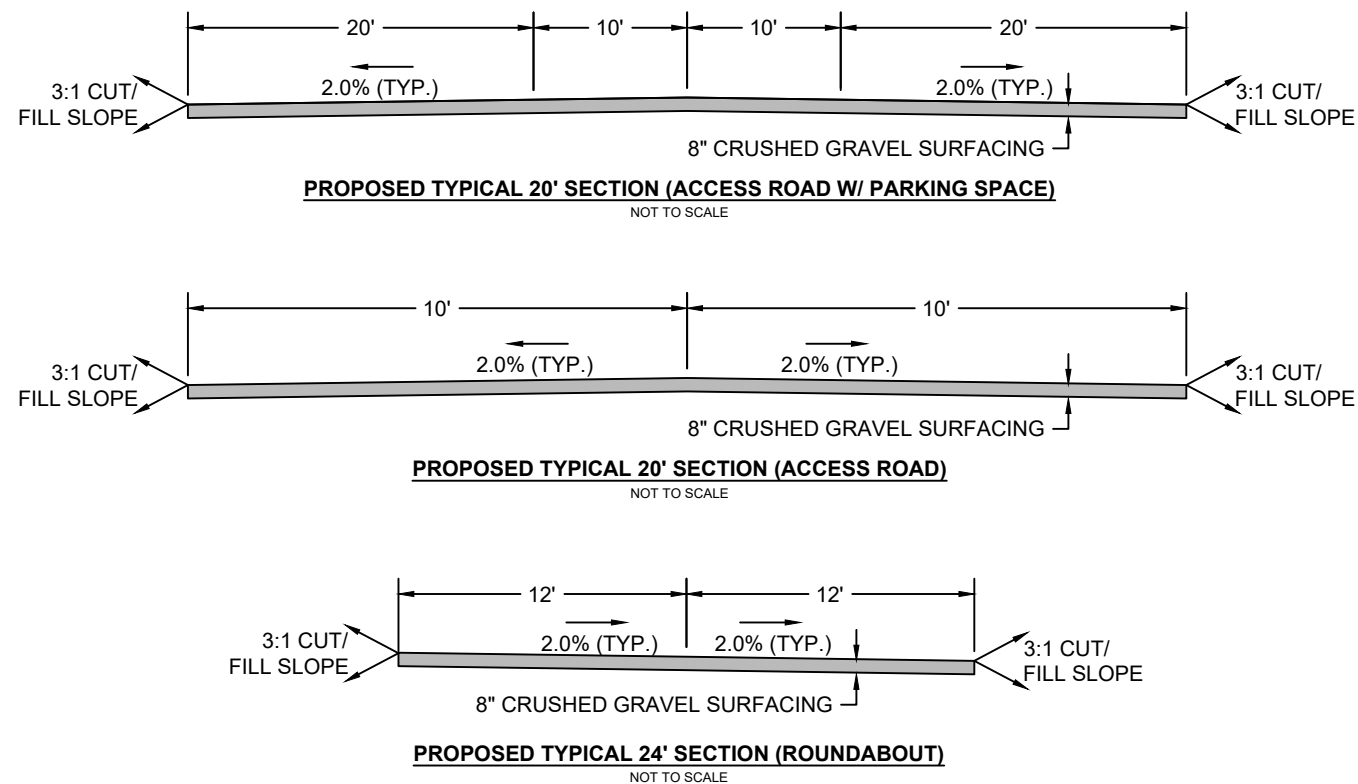
ACCESS ROAD EARTHWORK SUMMARY		
ITEM	CUT (C.Y.)	FILL (C.Y.)
ACCESS ROAD	250	107

NOTES:

1. ASSUMING NO TOPSOIL REMOVAL FROM EXISTING ACCESS ROAD

ACCESS ROAD CRUSHED GRAVEL SURFACING SUMMARY (8")		
ITEM	QUANTITY	UNITS
ACCESS ROAD	430	C.Y.

LODGE SITE #4 CONCRETE SURFACING SUMMARY		
ITEM	QUANTITY	UNITS
DRIVEWAY (6")	133	S.Y.
SIDEWALK (4")	9	S.Y.



CIG 9/1/2023
DRAWN BY: DATE:
DEB 9/1/2023
CHECKED BY: DATE:

REVISED BY: DATE:
APPROVED BY: DATE:

APPROVED BY: DATE:
APPROVED BY: DATE:



**MONTANA FISH,
WILDLIFE & PARKS**

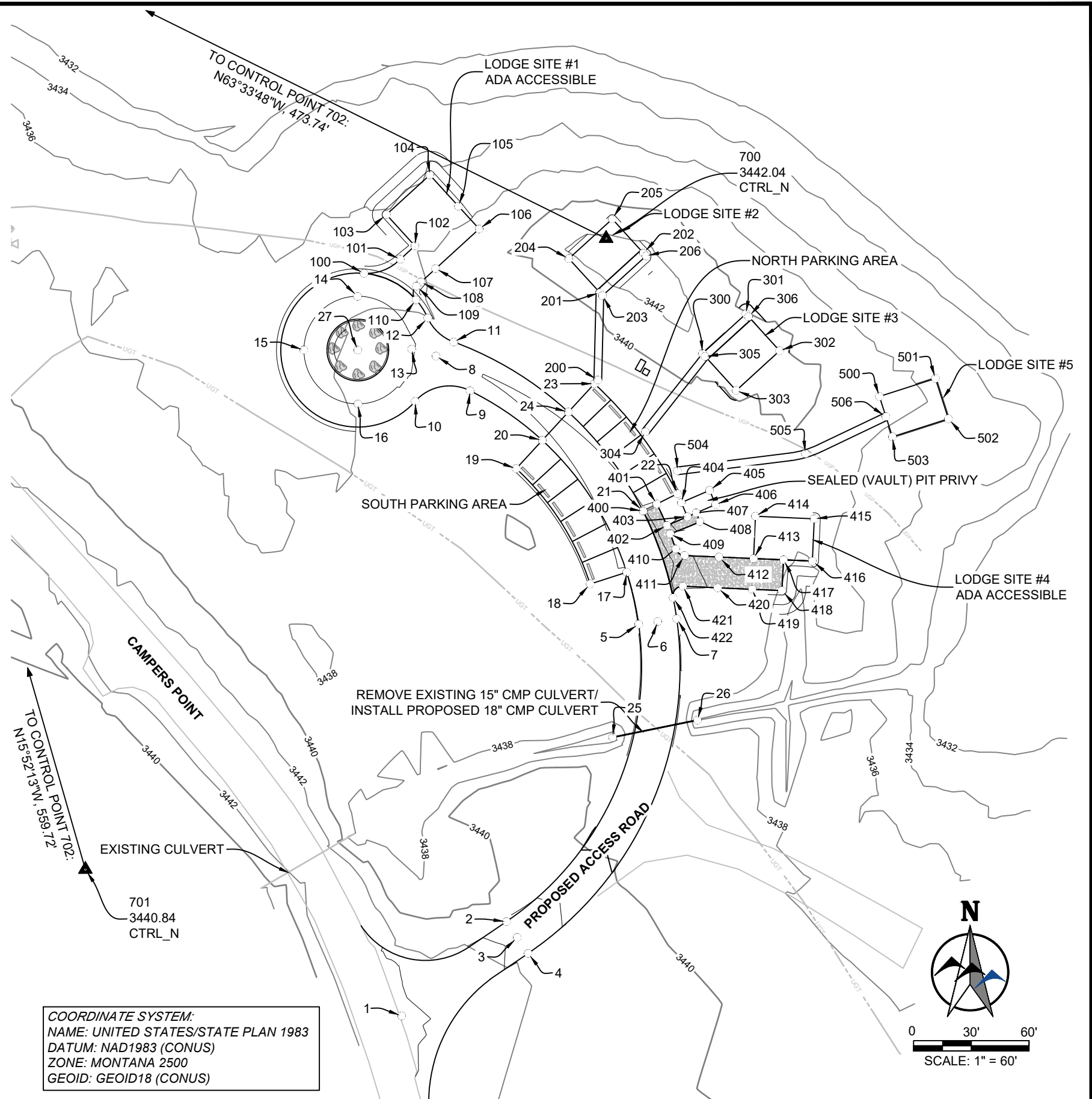
**TONGUE RIVER RESERVOIR STATE PARK
DIVERSIFIED LODGING - QUANTITIES & TYPICALS**

SHEET: **3**
of
15

k:\Sheridan\montana fish, wildlife and parks\2022\097 trsp diversifed lodging\05CAD\Sheets\project_2\PLAN_SET\202097_PRJT_2_SITE_PNTS.dwg PNTS_11/1/2023 3:43:54 PM

Point Table				
Point	Northing	Easting	Elevation	Description
1	322436.59	2667196.41	3443.34	BEGIN_ROAD
2	322485.51	2667250.96	3441.59	ROAD_PC_LEFT
3	322477.22	2667256.55	3441.79	ROAD_PC_CL
4	322468.93	2667262.15	3441.59	ROAD_PC_RIGHT
5	322639.96	2667319.87	3439.14	ROAD_MIDPOINT_LEFT
6	322641.33	2667329.78	3439.34	ROAD_MIDPOINT_CL
7	322642.70	2667339.68	3439.14	ROAD_MIDPOINT_RIGHT
8	322779.44	2667214.80	3439.00	END_ROAD_CL
9	322761.41	2667232.43	3438.80	ROAD_PC_LEFT
10	322755.94	2667203.92	3438.76	ROAD_PT_LEFT
11	322786.81	2667224.00	3438.80	ROAD_PC_RIGHT
12	322799.32	2667210.52	3438.76	ROAD_PT_RIGHT
13	322783.08	2667202.15	3439.00	ROUNDAABOUT_CL
14	322810.56	2667174.05	3439.00	ROUNDAABOUT_CL
15	322782.76	2667146.05	3439.00	ROUNDAABOUT_CL
16	322754.66	2667174.15	3439.00	ROUNDAABOUT_CL
17	322667.00	2667313.71	3439.08	SOUTH_PARKING
18	322660.88	2667294.67	3438.68	SOUTH_PARKING
19	322720.91	2667256.36	3438.50	SOUTH_PARKING
20	322735.60	2667269.93	3438.90	SOUTH_PARKING
21	322698.80	2667322.25	3439.02	NORTH_PARKING
22	322707.78	2667340.13	3438.62	NORTH_PARKING
23	322764.99	2667297.06	3438.50	NORTH_PARKING
24	322750.30	2667283.49	3438.90	NORTH_PARKING
25	322581.16	2667306.26	0.00	CULVERT_INLET
26	322590.09	2667350.37	3433.90	CULVERT_OUTLET
27	322782.66	2667174.15	3439.00	ROUNDAABOUT_CENTROID
100	322822.53	2667177.44	3438.76	SITE_1_PC
101	322829.82	2667196.27	3438.55	SITE_1_PT
102	322836.77	2667203.91	3438.45	SITE_1
103	322853.05	2667189.11	3438.45	SITE_1
104	322873.63	2667211.73	3438.45	SITE_1
105	322857.35	2667226.53	3438.45	SITE_1
106	322845.52	2667237.30	3438.21	SITE_1
107	322824.94	2667214.68	3438.21	SITE_1
108	322817.99	2667207.04	3438.48	SITE_1
109	322815.82	2667204.65	3438.56	SITE_1_PC
110	322808.68	2667204.39	3438.76	SITE_1_PT
200	322766.91	2667298.83	3438.80	SITE_2_PATHWAY_START
201	322812.26	2667300.03	3441.44	SITE_2_PATHWAY_CL
202	322832.84	2667322.65	3441.44	SITE_2_PATHWAY_END
203	322810.78	2667301.38	3441.44	SITE_2
204	322830.01	2667283.88	3441.44	SITE_2
205	322850.59	2667306.50	3441.44	SITE_2

Point Table				
Point	Northing	Easting	Elevation	Description
206	322831.36	2667324.00	3441.44	SITE_2
300	322780.59	2667353.25	3441.00	SITE_3
301	322801.17	2667375.87	3441.00	SITE_3
302	322781.94	2667393.37	3441.00	SITE_3
303	322761.36	2667370.74	3441.00	SITE_3
304	322739.91	2667323.48	3438.45	SITE_3_PATHWAY_BEGIN
305	322779.11	2667354.59	3441.00	SITE_3_PATHWAY_CL
306	322799.69	2667377.21	3441.00	SITE_3_PATHWAY_END
400	322698.80	2667322.25	3439.02	SITE_4
401	322702.39	2667329.40	3438.86	SITE_4
402	322691.23	2667334.56	3438.89	SITE_4
403	322695.79	2667345.28	3439.47	SITE_4_PRIVY
404	322703.14	2667342.12	3439.47	SITE_4_PRIVY
405	322709.45	2667356.83	3439.47	SITE_4_PRIVY
406	322702.10	2667359.97	3439.47	SITE_4_PRIVY
407	322697.75	2667349.88	3439.47	SITE_4
408	322693.16	2667351.82	3439.40	SITE_4
409	322686.84	2667336.35	3438.81	SITE_4
410	322679.02	2667339.22	3438.91	SITE_4_PC
411	322675.60	2667343.74	3438.91	SITE_4_PT
412	322674.79	2667361.70	3439.27	SITE_4
413	322673.99	2667379.66	3439.63	SITE_4
414	322695.96	2667380.65	3439.63	SITE_4
415	322694.59	2667411.20	3439.63	SITE_4
416	322672.61	2667410.21	3439.63	SITE_4
417	322673.28	2667395.22	3439.63	SITE_4
418	322657.31	2667394.37	3439.47	SITE_4
419	322658.00	2667378.93	3439.47	SITE_4
420	322658.81	2667360.98	3439.11	SITE_4
421	322659.63	2667342.93	3438.75	SITE_4_PC
422	322653.64	2667337.81	3439.12	SITE_4_PT
500	322758.12	2667445.17	3438.10	SITE_5
501	322767.43	2667474.30	3438.10	SITE_5
502	322746.48	2667481.00	3438.10	SITE_5
503	322737.16	2667451.87	3438.10	SITE_5
504	322719.61	2667340.11	3439.00	SITE_5_PATHWAY_START
505	322728.44	2667406.65	3439.34	SITE_5_PATHWAY_CL
506	322747.64	2667448.52	3438.10	SITE_5_PATHWAY_END
700	322840.44	2667303.28	3442.04	CTRL_N
701	322512.96	2667032.14	3440.84	CTRL_N
702	323051.35	2666879.08	3434.47	CTRL_N



CIG 9/1/2023
 DRAWN BY: DATE:
 DEB 9/1/2023
 CHECKED BY: DATE:

REVISED BY: DATE:
 APPROVED BY: DATE:

APPROVED BY: DATE:
 APPROVED BY: DATE:

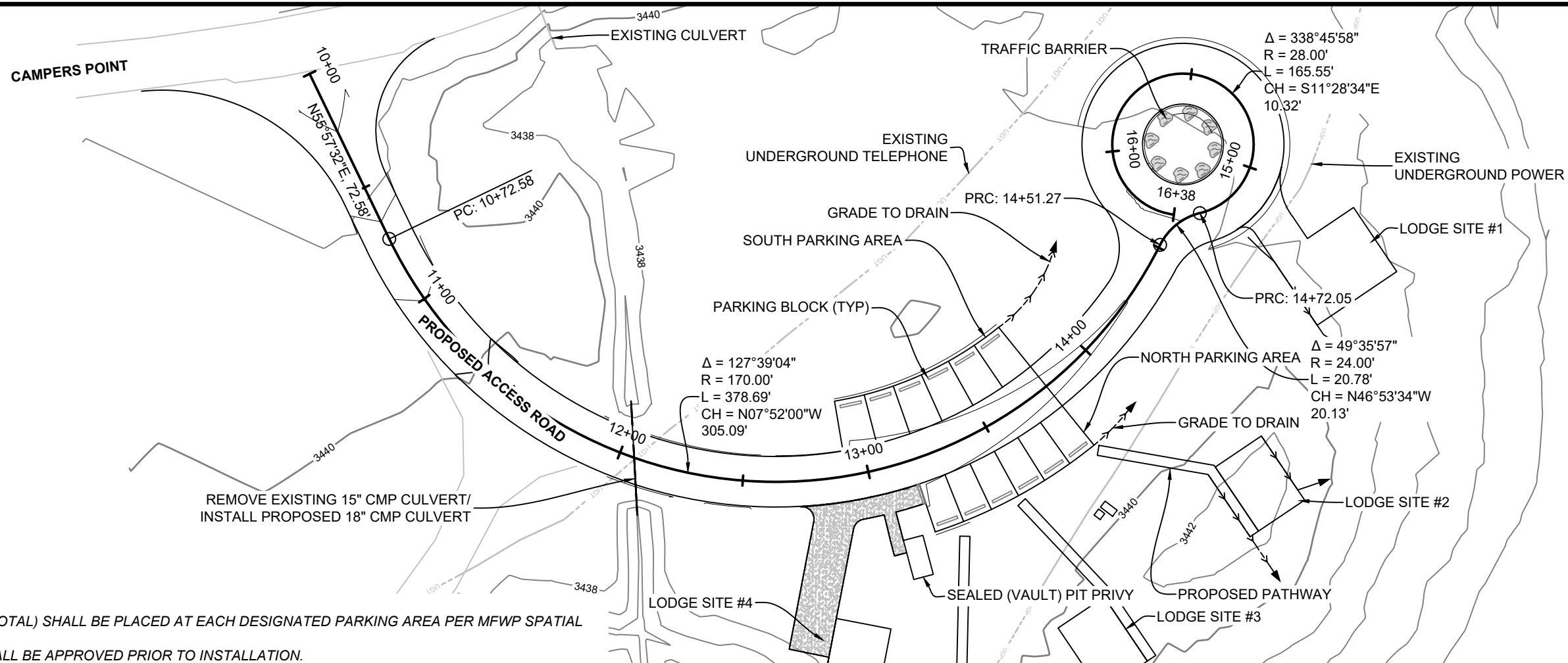


**MONTANA FISH,
 WILDLIFE & PARKS**

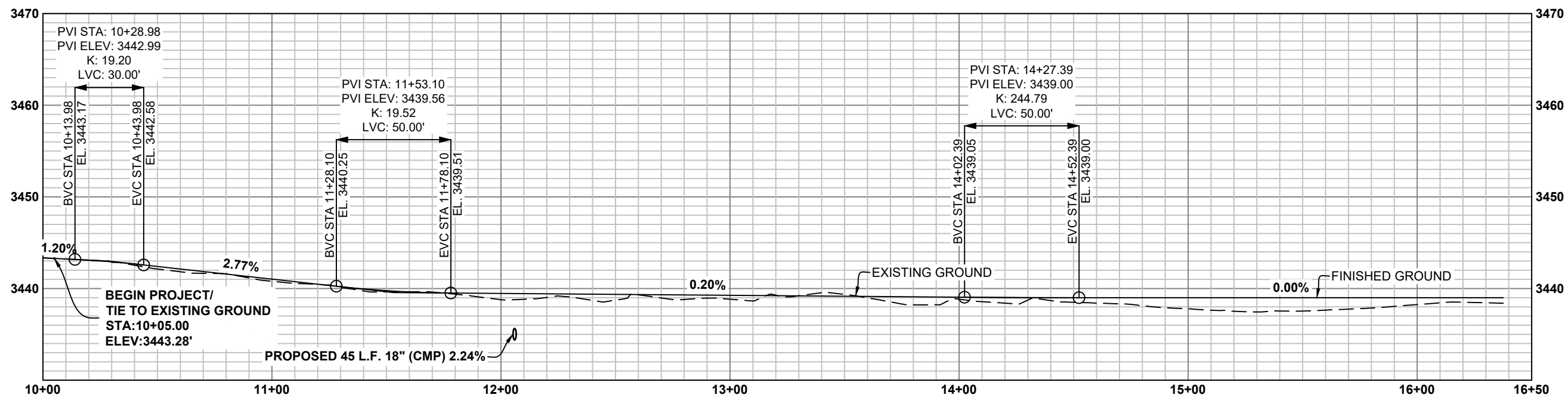
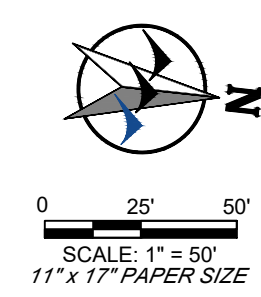
**TONGUE RIVER RESERVOIR STATE PARK
 DIVERSIFIED LODGING - SITE POINTS**

SHEET: 4 of 15

k:\Sheridan\montana fish_wildlife and parks\2022\2097 trsp diversifed lodging\05CAD\Drawings\project_2\PLAN_SET\2097_PRT2_ROAD_PP_SHT.dwg ROAD_PP (1) 11/1/2023 3:22:28 PM



- NOTES:**
1. PARKING BLOCKS (13 TOTAL) SHALL BE PLACED AT EACH DESIGNATED PARKING AREA PER MFWP SPATIAL STANDARDS.
 2. TRAFFIC BARRIERS SHALL BE APPROVED PRIOR TO INSTALLATION.



HORZ SCALE: 1" = 20'
 VERT SCALE: 1" = 5'

CIG	DATE: 9/1/2023	REVISOR:	DATE:	APPROVED BY:	DATE:
DRAWN BY:	DATE:	REVISOR:	DATE:	APPROVED BY:	DATE:
DEB	DATE: 9/1/2023	REVISOR:	DATE:	APPROVED BY:	DATE:
CHECKED BY:	DATE:	REVISOR:	DATE:	APPROVED BY:	DATE:

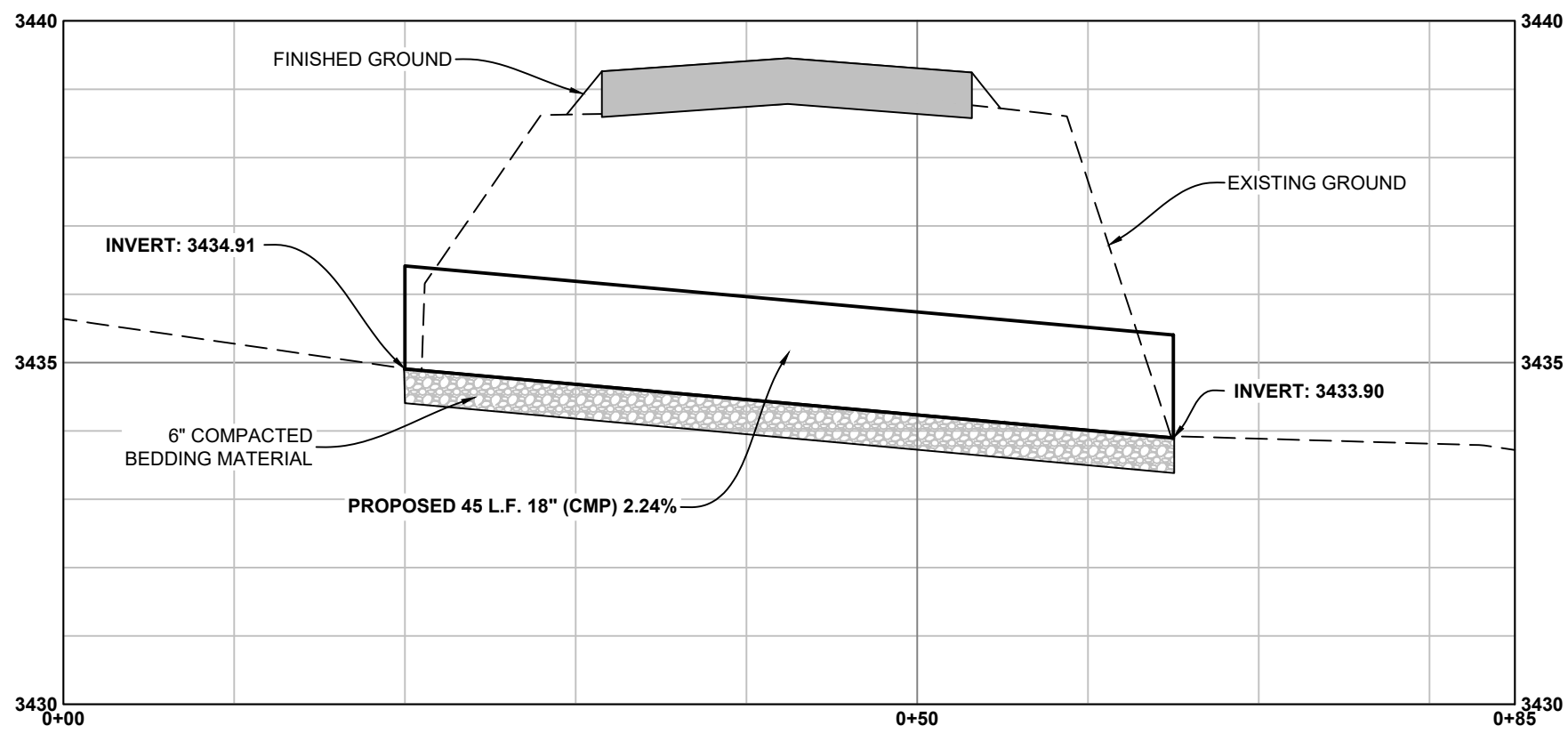
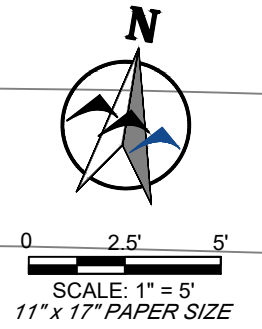
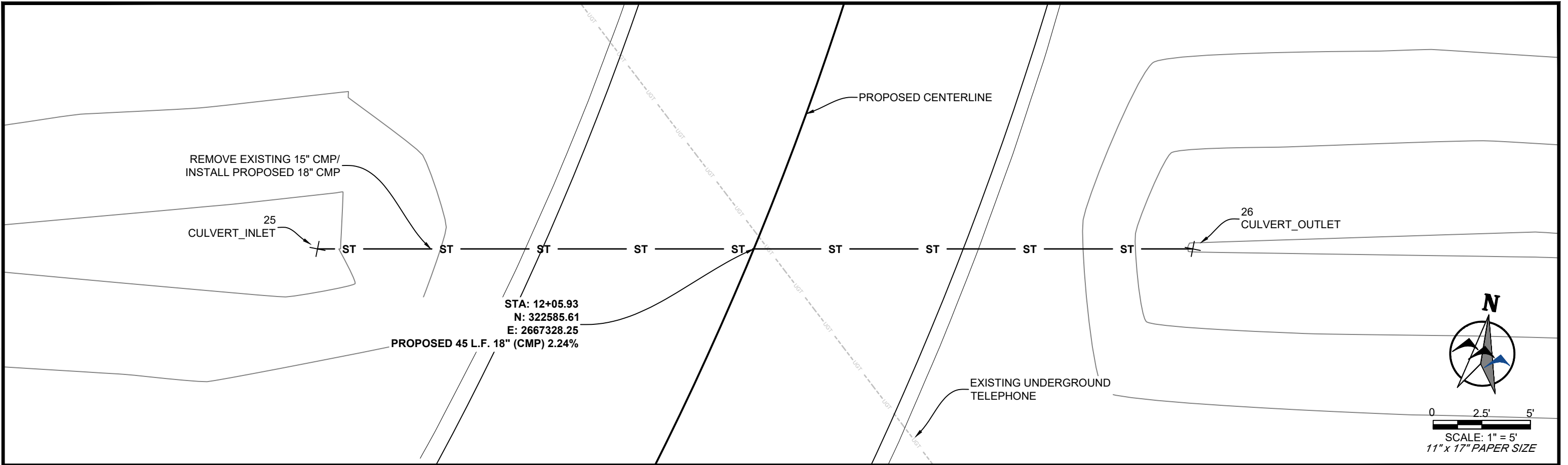


**MONTANA FISH,
 WILDLIFE & PARKS**

TONGUE RIVER RESERVOIR STATE PARK
DIVERSIFIED LODGING - PROPOSED ACCESS ROAD DESIGN

SHEET: 6 of 15

k:\Sheridan\montana_fish_wildlife_and_parks\2022097_trsp_diversified_lodging\05\CAD\Sheets_project_2\PLAN_SET\22097_PRT2_ROAD_PP_SHT.dwg CLVT_PP (2) 11/1/2023 3:22:28 PM



CIG
DRAWN BY: DATE: 9/1/2023
DEB
CHECKED BY: DATE: 9/1/2023

REVISED BY: DATE:
APPROVED BY: DATE:

APPROVED BY: DATE:
APPROVED BY: DATE:

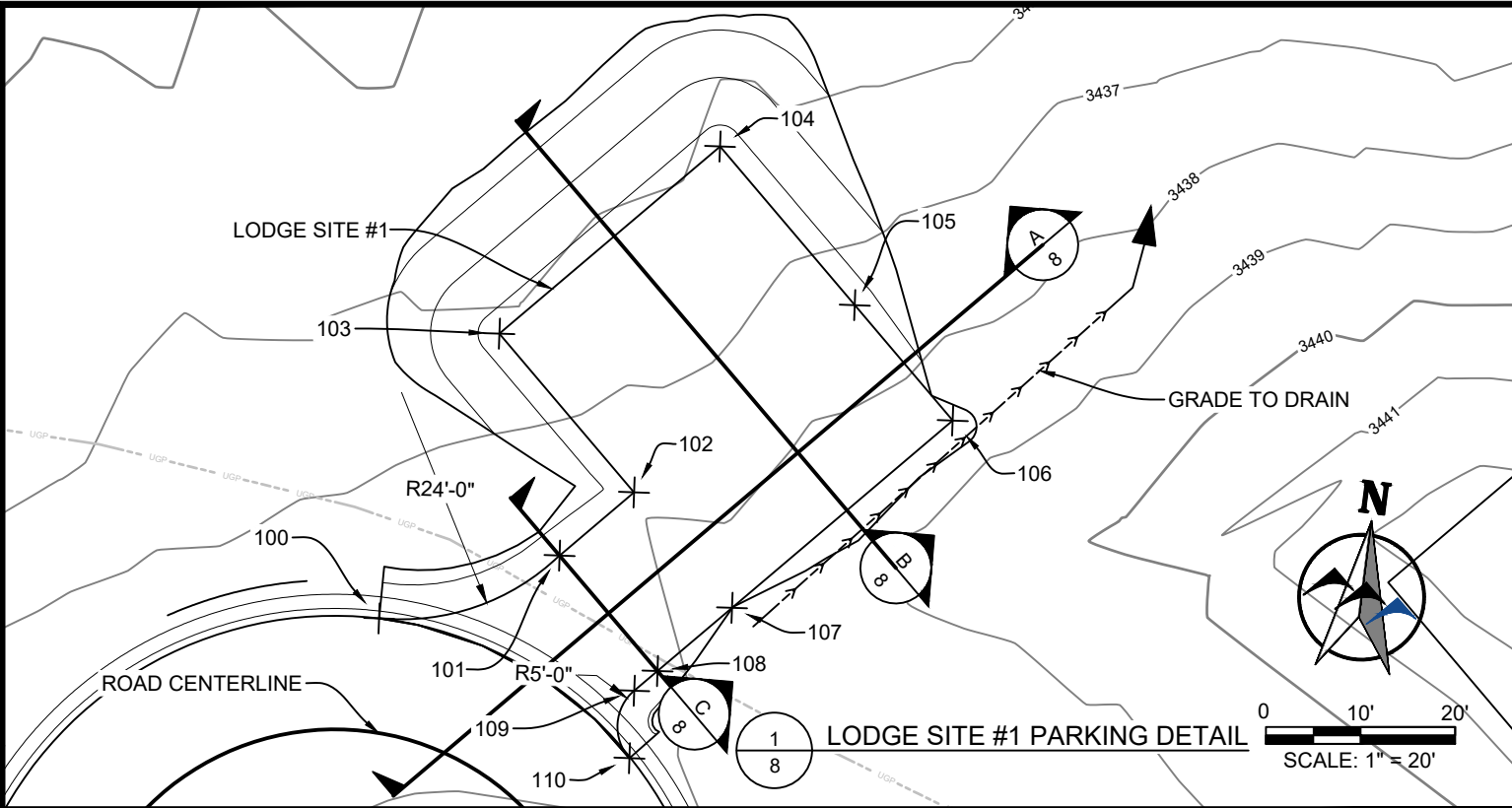


**MONTANA FISH,
WILDLIFE & PARKS**

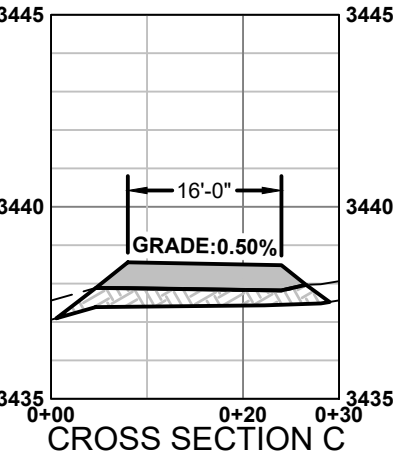
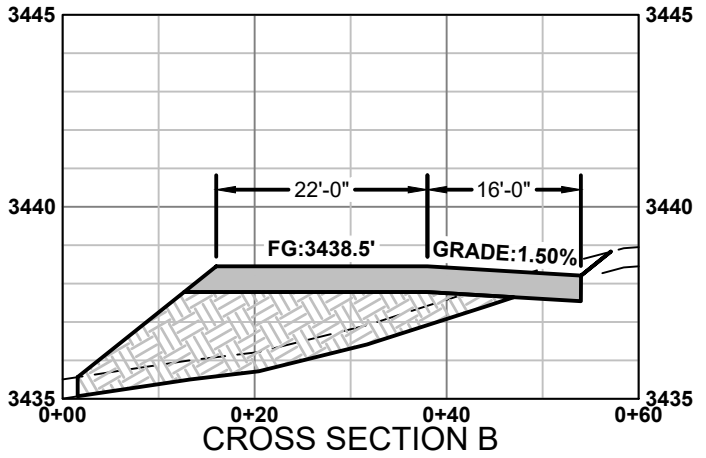
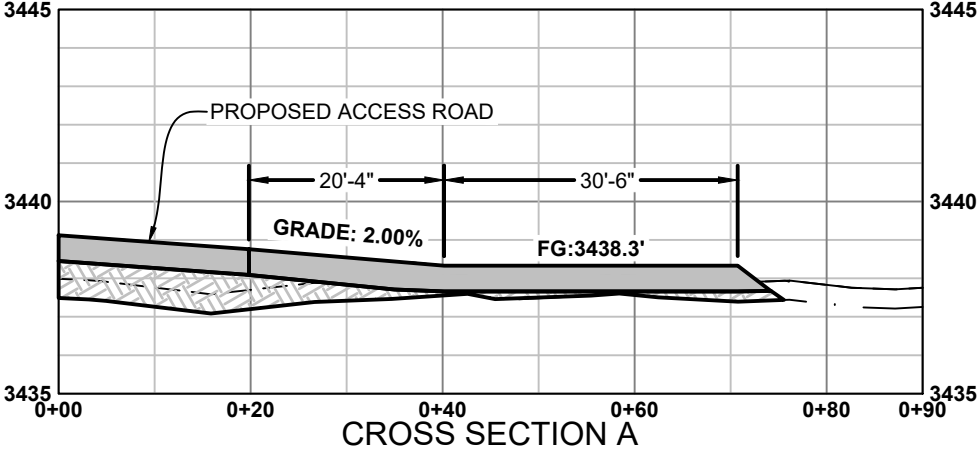
TONGUE RIVER RESERVOIR STATE PARK
DIVERSIFIED LODGING - CULVERT DETAIL

SHEET: 7 of 15

k:\Sheridan\montana fish, wildlife and parks\2022087 trsp diversified lodging\cadd\sheet\project_2\PLAN_SHT\22087_PRTJ2_PPKG_PP_SHT.dwg PRKG_PP(1) 10/4/2023 10:08:31 AM



THIS SIDE INTENTIONALLY LEFT BLANK



HORZ SCALE: 1" = 20'
 VERT SCALE: 1" = 5'
 - - - EXISTING GROUND
 - · - TOPSOIL REMOVAL
 ——— FINISHED GROUND

CIG	9/1/2023	REVISED BY:	DATE:	APPROVED BY:	DATE:
DRAWN BY:	DATE:				
DEB	9/1/2023	APPROVED BY:	DATE:	APPROVED BY:	DATE:
CHECKED BY:	DATE:				

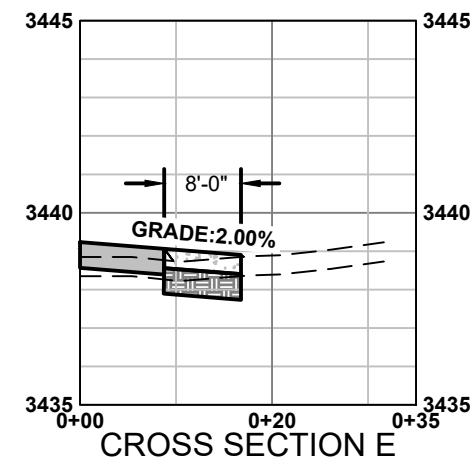
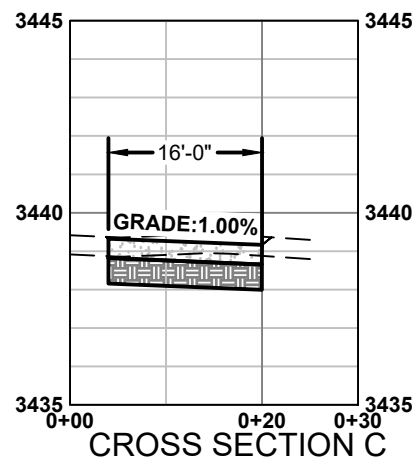
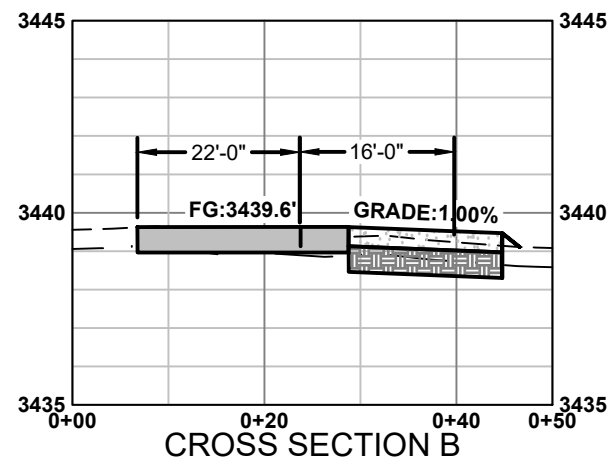
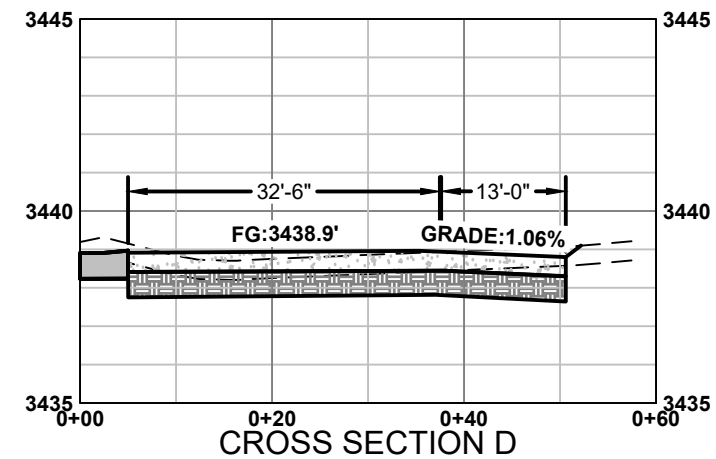
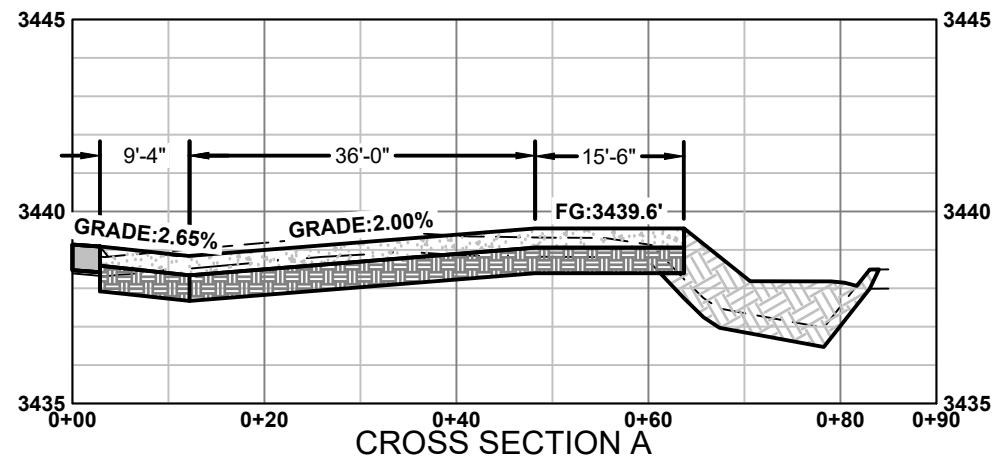
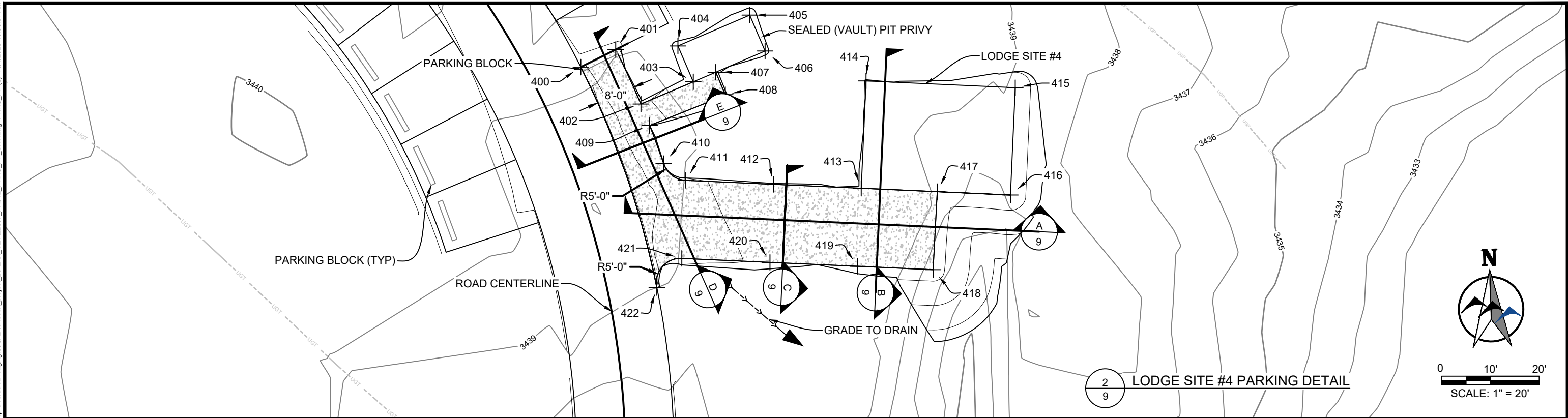


**MONTANA FISH,
 WILDLIFE & PARKS**

**TONGUE RIVER RESERVOIR STATE PARK
 DIVERSIFIED LODGING - PROPOSED PARKING DESIGN**

SHEET: **8**
 of
15

k:\Sheridan\montana fish, wildlife and parks\2022087 trsp diversifed lodging\05CAD\Sheets\project_2\PLAN_SHT\202087_PRTJ2_PPKG_PP_SHT.dwg PRKG_PP (3) 10/4/2023 10:08:31 AM



HORZ SCALE: 1" = 20'
 VERT SCALE: 1" = 5'
 - - - EXISTING GROUND
 - · - TOPSOIL REMOVAL
 ——— FINISHED GROUND

CIG 9/1/2023
 DRAWN BY: DATE:
 DEB 9/1/2023
 CHECKED BY: DATE:

REVISED BY: DATE:
 APPROVED BY: DATE:

APPROVED BY: DATE:
 APPROVED BY: DATE:

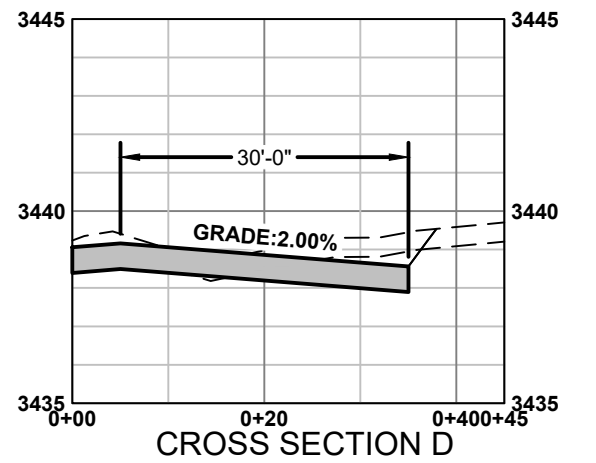
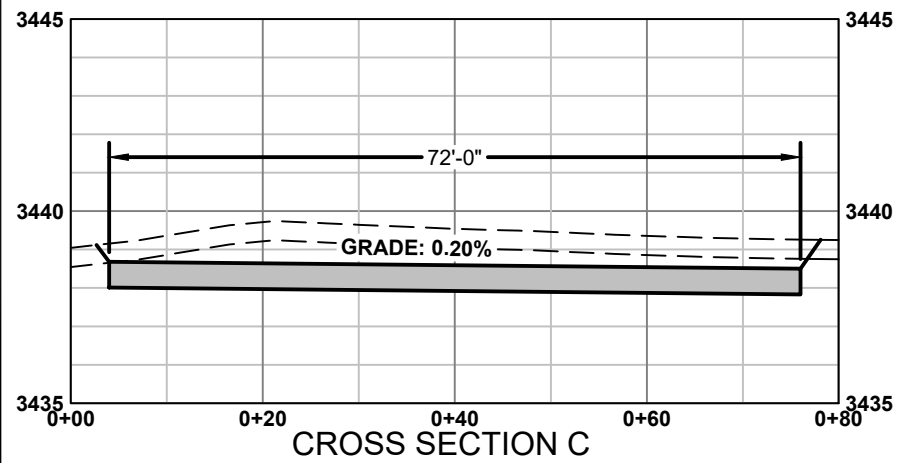
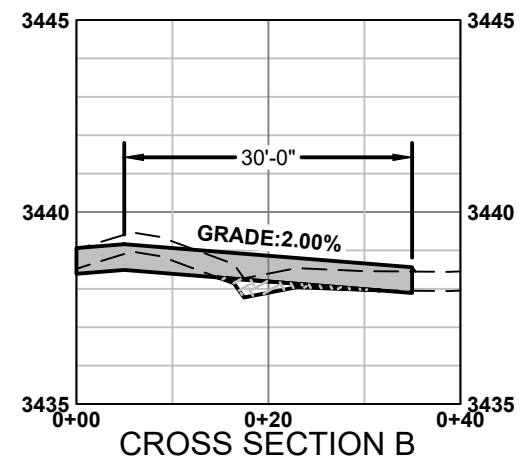
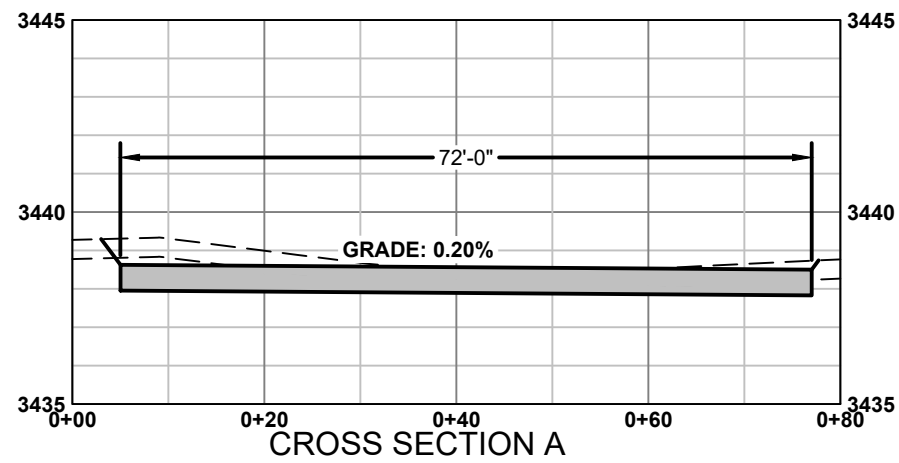
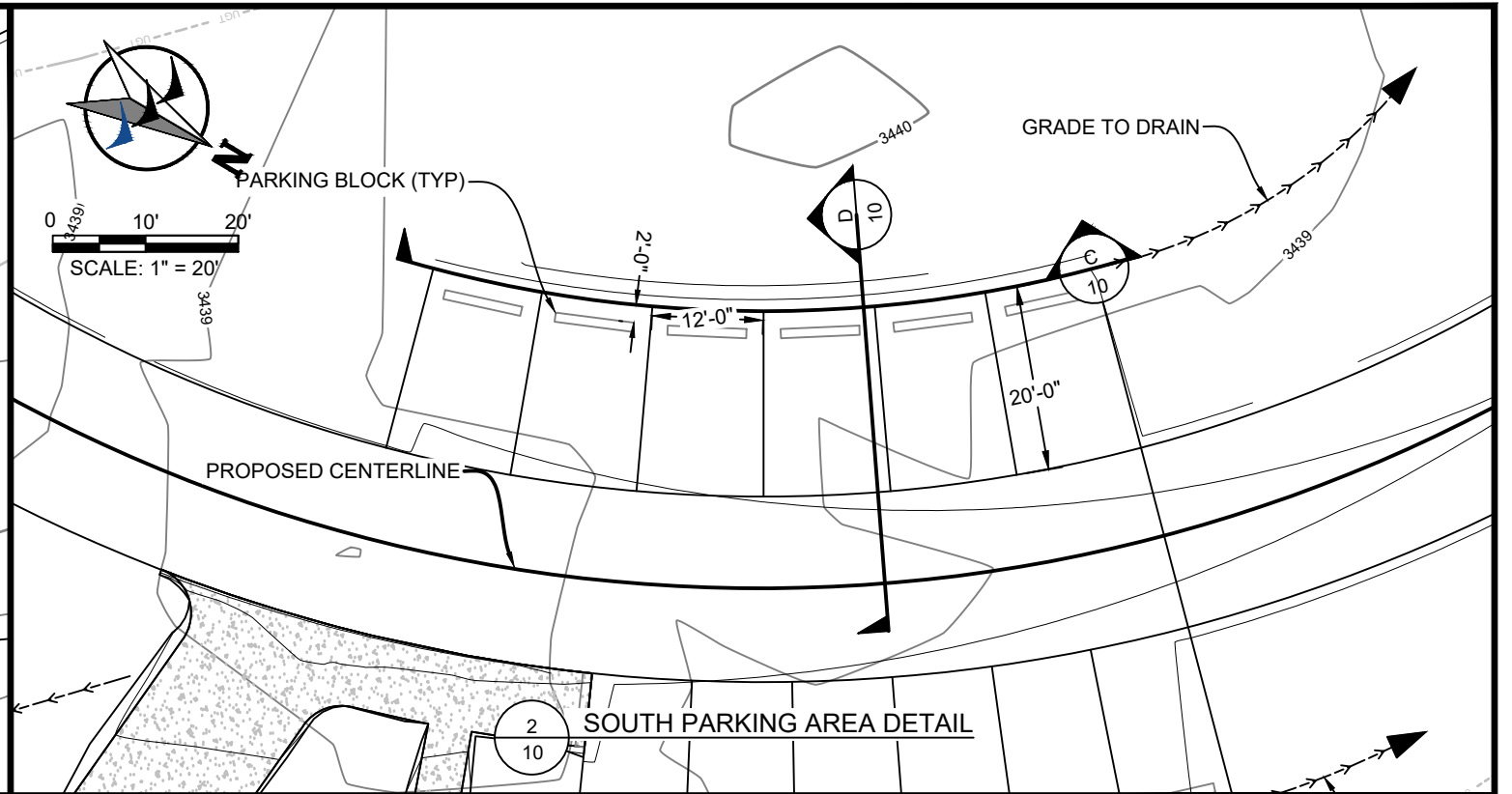
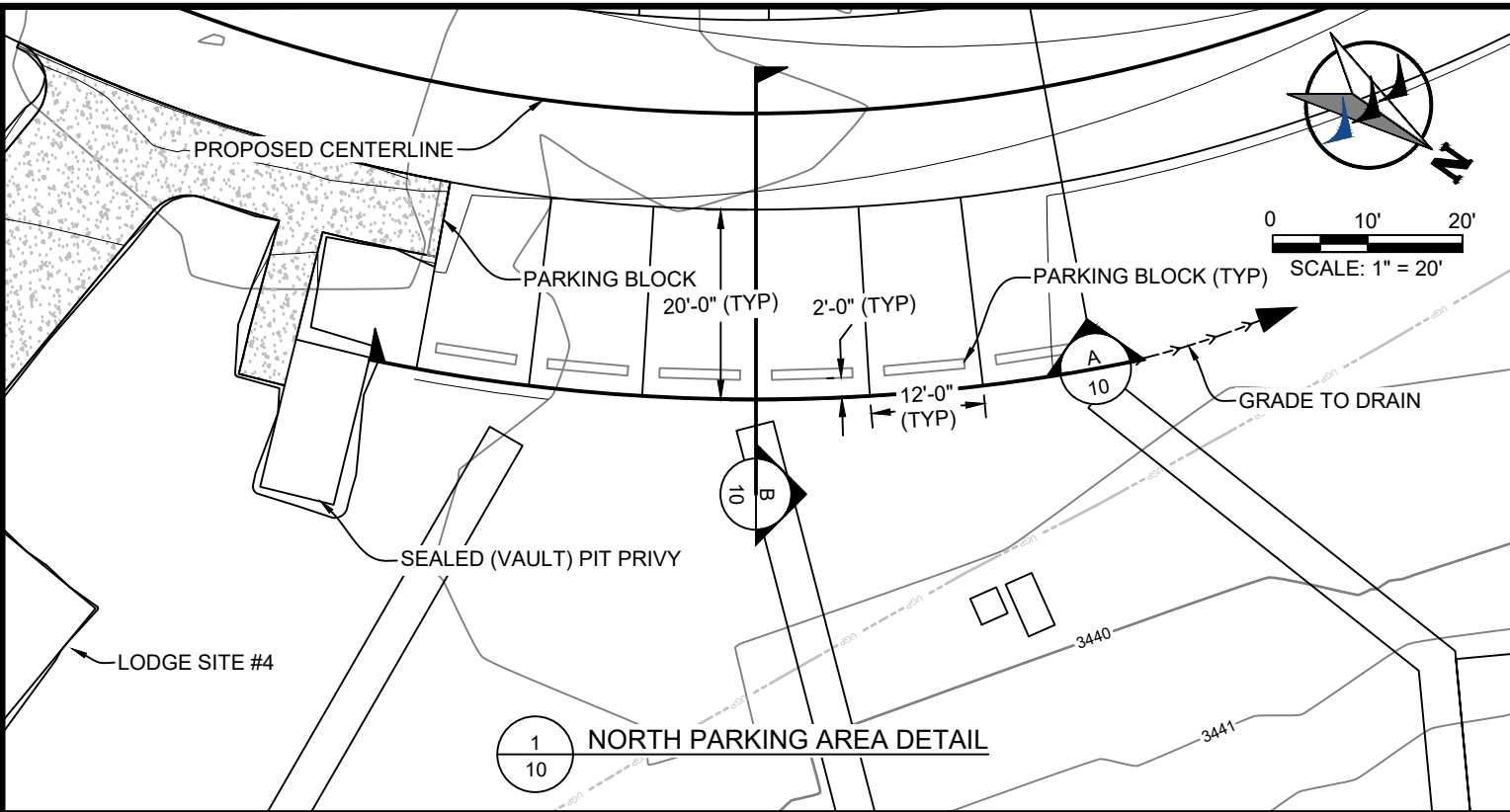


**MONTANA FISH,
 WILDLIFE & PARKS**

TONGUE RIVER RESERVOIR STATE PARK
 DIVERSIFIED LODGING - PROPOSED PARKING DESIGN

SHEET: 9 of 15

k:\Sheridan\montana fish, wildlife and parks\2022\087 trsp diversifed lodging\05\CAD\Sheets\project_2\PLAN_SET\22087_PRTJ2_PARK_PP_SHT.dwg PRKG_PP (2) 10/4/2023 10:08:31 AM



HORZ SCALE: 1" = 20'
 VERT SCALE: 1" = 5'
 - - - EXISTING GROUND
 - · - TOPSOIL REMOVAL
 ——— FINISHED GROUND

HORZ SCALE: 1" = 20'
 VERT SCALE: 1" = 5'
 - - - EXISTING GROUND
 - · - TOPSOIL REMOVAL
 ——— FINISHED GROUND

CIG	9/1/2023
DRAWN BY:	DATE:
DEB	9/1/2023
CHECKED BY:	DATE:

REVISED BY:	DATE:
APPROVED BY:	DATE:

APPROVED BY:	DATE:
APPROVED BY:	DATE:

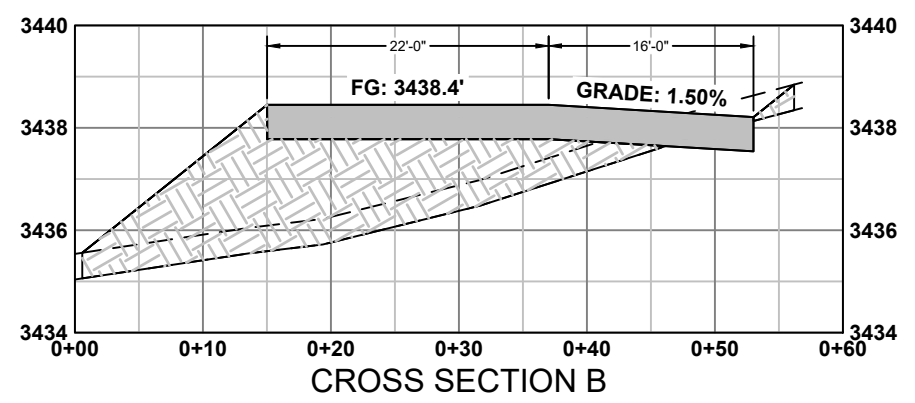
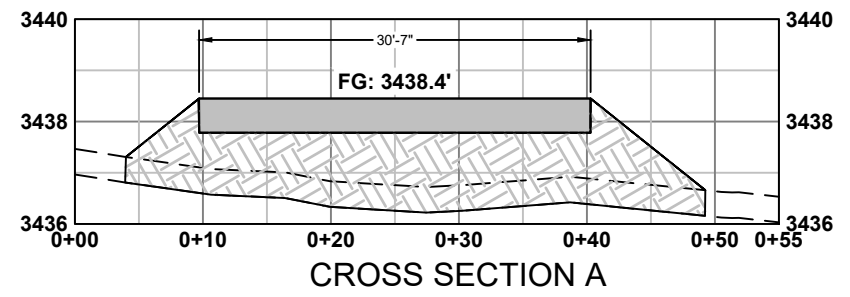
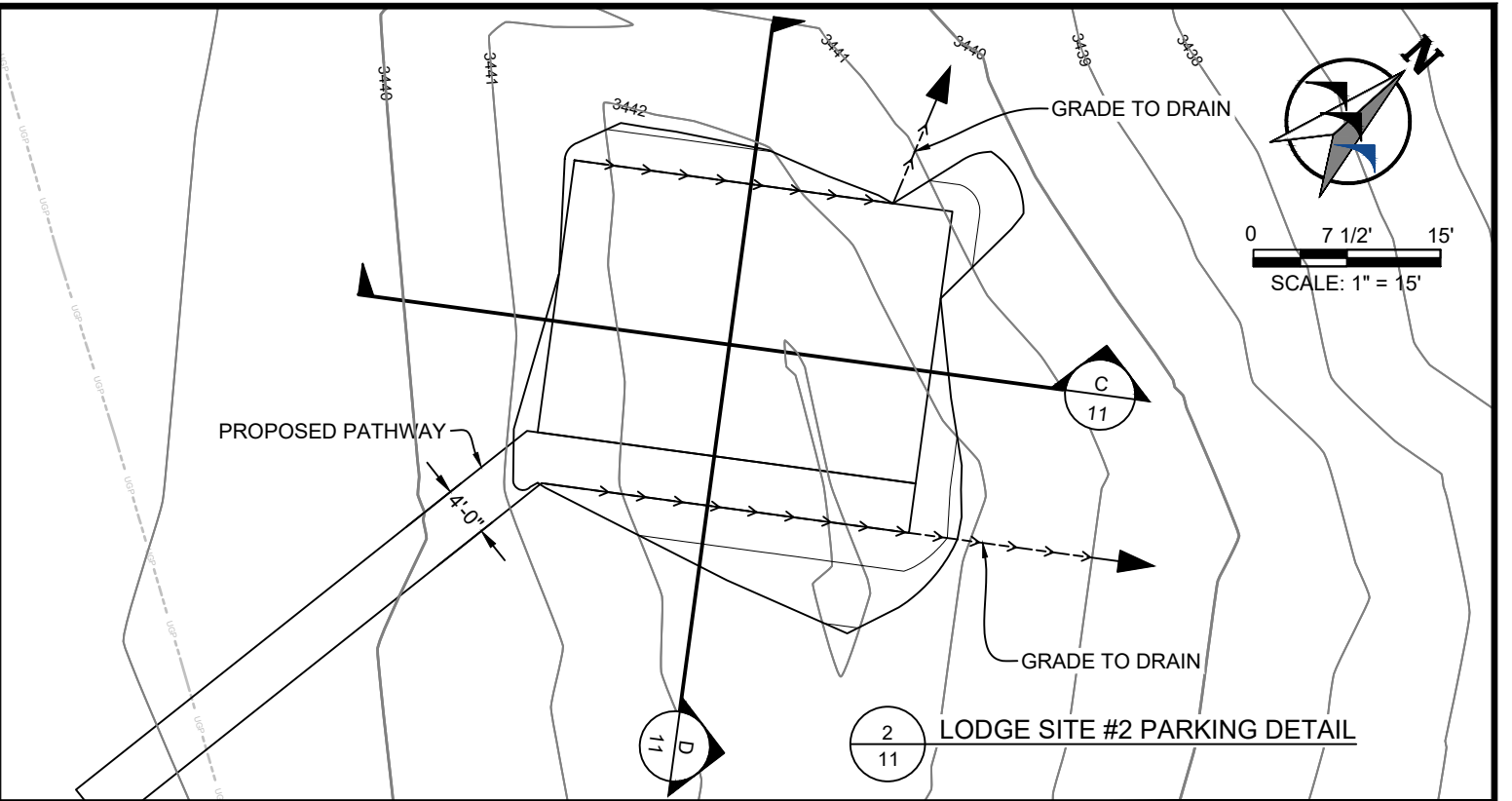
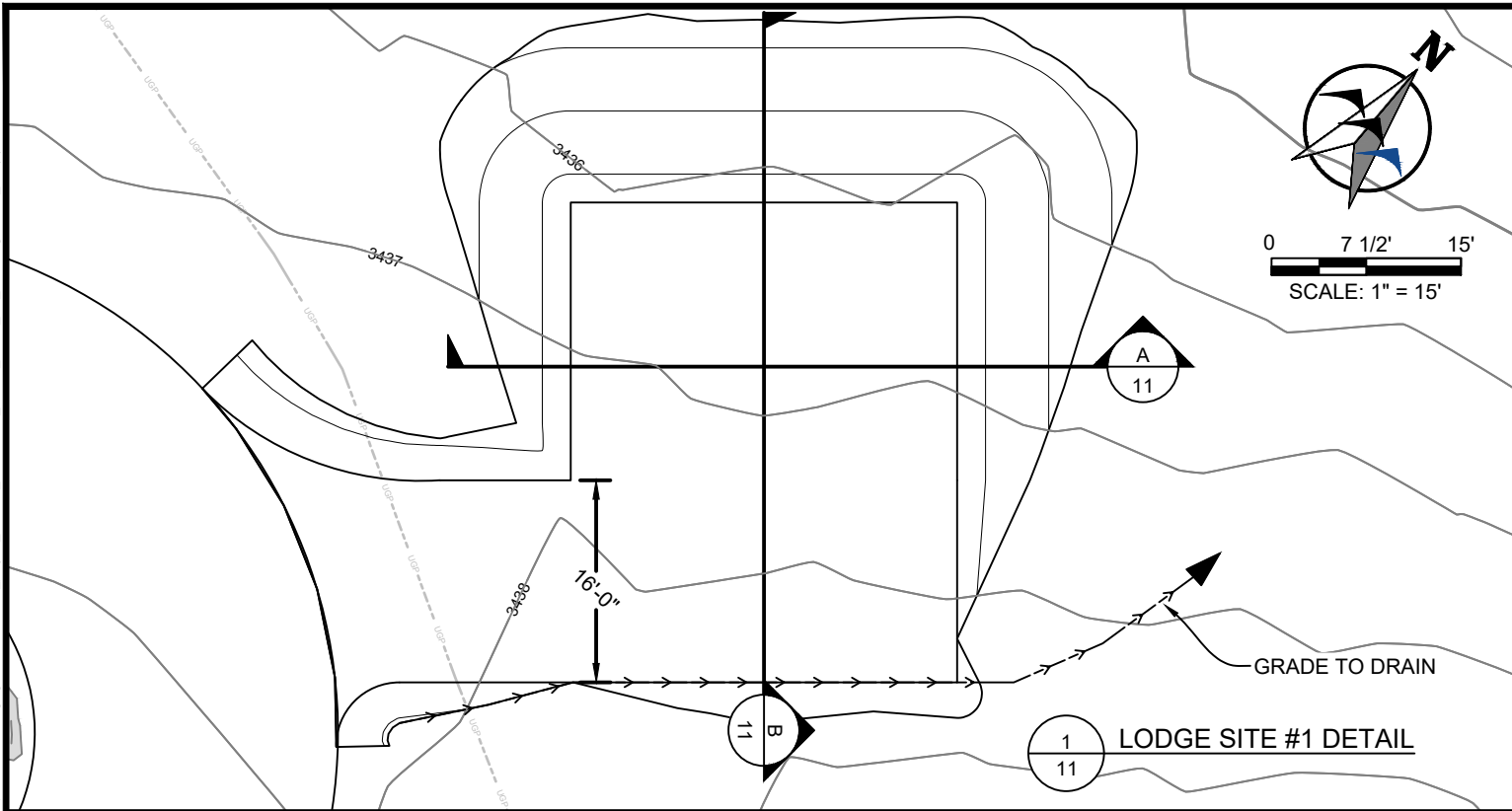


**MONTANA FISH,
 WILDLIFE & PARKS**

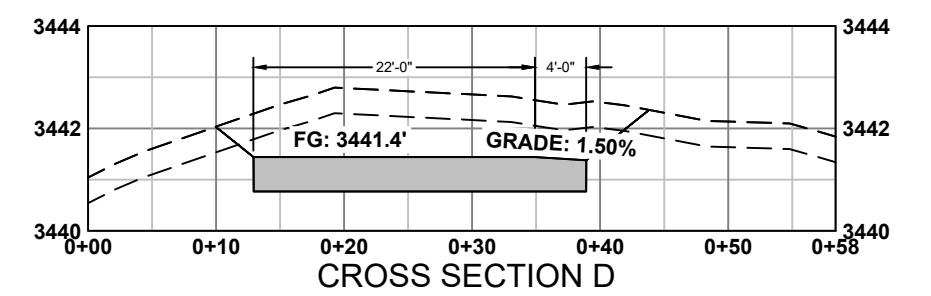
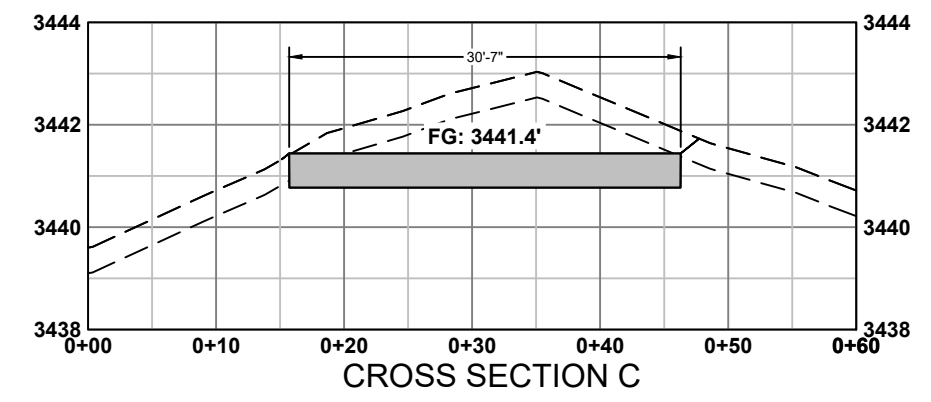
**TONGUE RIVER RESERVOIR STATE PARK
 DIVERSIFIED LODGING - PROPOSED PARKING DESIGN**

SHEET: 10
 of
 15

k:\sheridan\montana fish, wildlife and parks\2022\2097_trsp diversified lodging\CAD\Sheets_project_2\PLAN_SET\22097_PRT2_LDGE_PP_SHT.dwg LDGE_PP(1)_10/4/2023 10:29:05 AM



HORZ SCALE: 1" = 10'
VERT SCALE: 1" = 4'
5H:1V CUT & FILL SLOPES



HORZ SCALE: 1" = 10'
VERT SCALE: 1" = 4'
5H:1V CUT & FILL SLOPES

CIG	9/1/2023				
DRAWN BY:	DATE:	REVISED BY:	DATE:	APPROVED BY:	DATE:
DEB	9/1/2023				
CHECKED BY:	DATE:	APPROVED BY:	DATE:	APPROVED BY:	DATE:

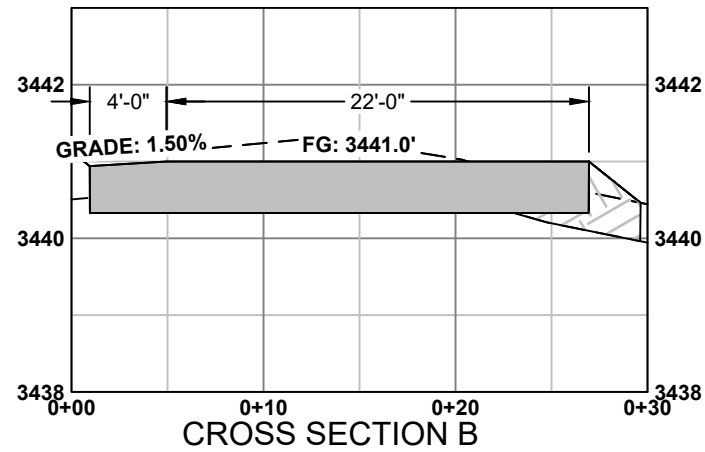
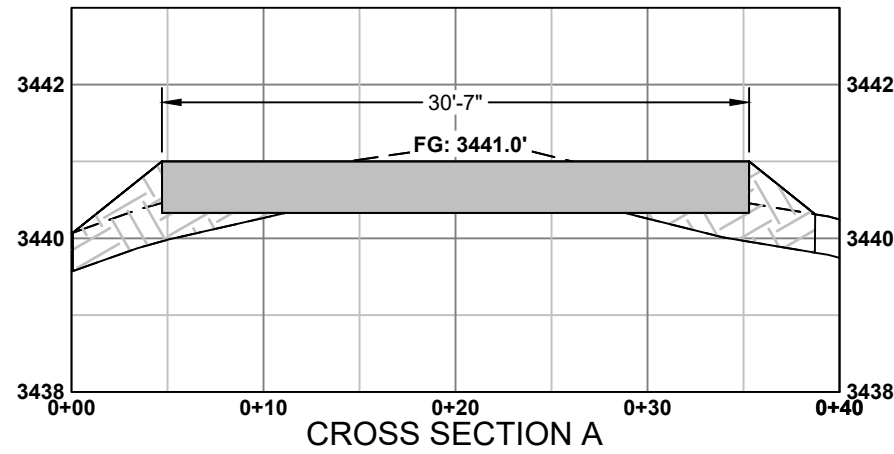
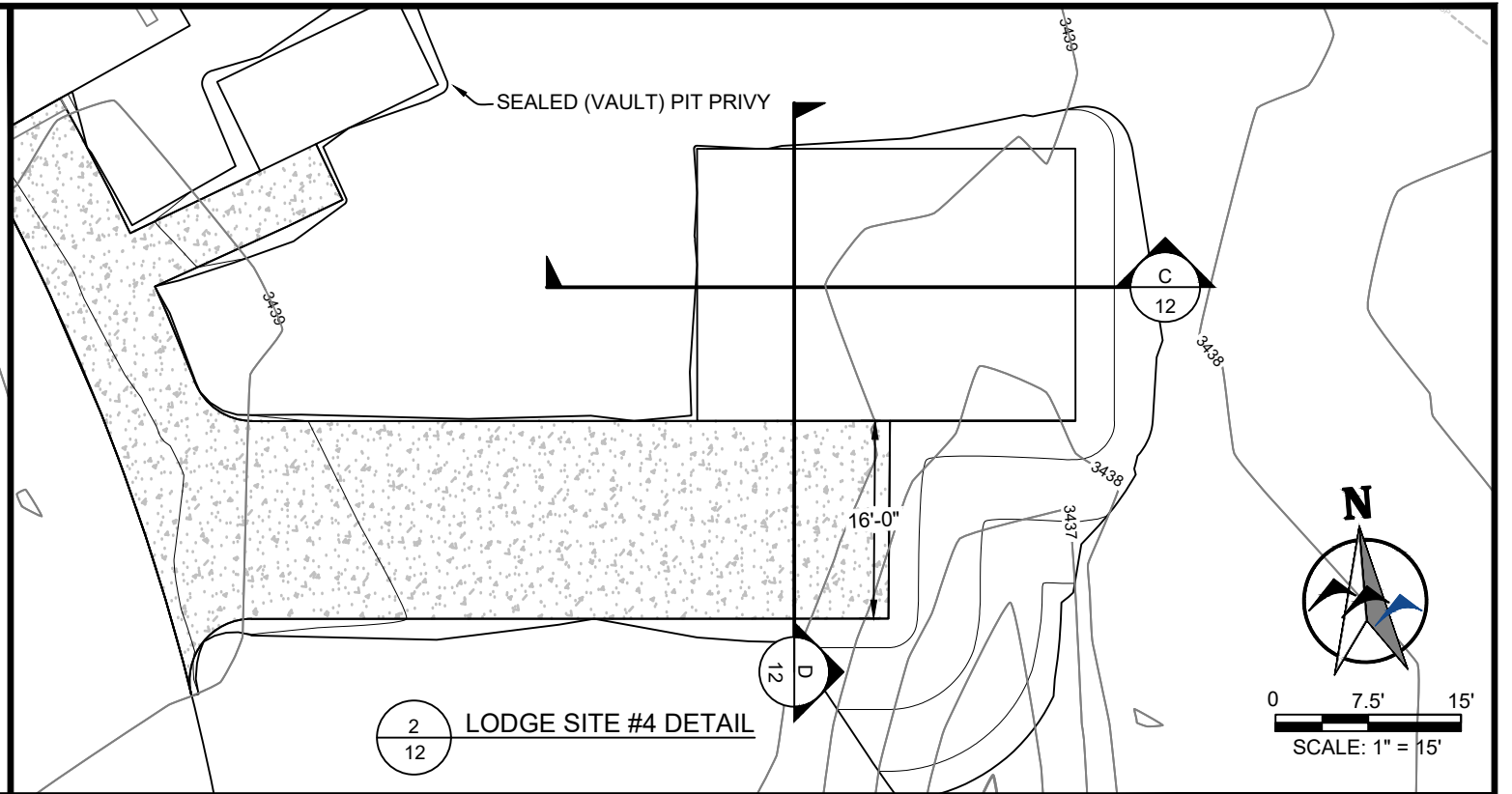
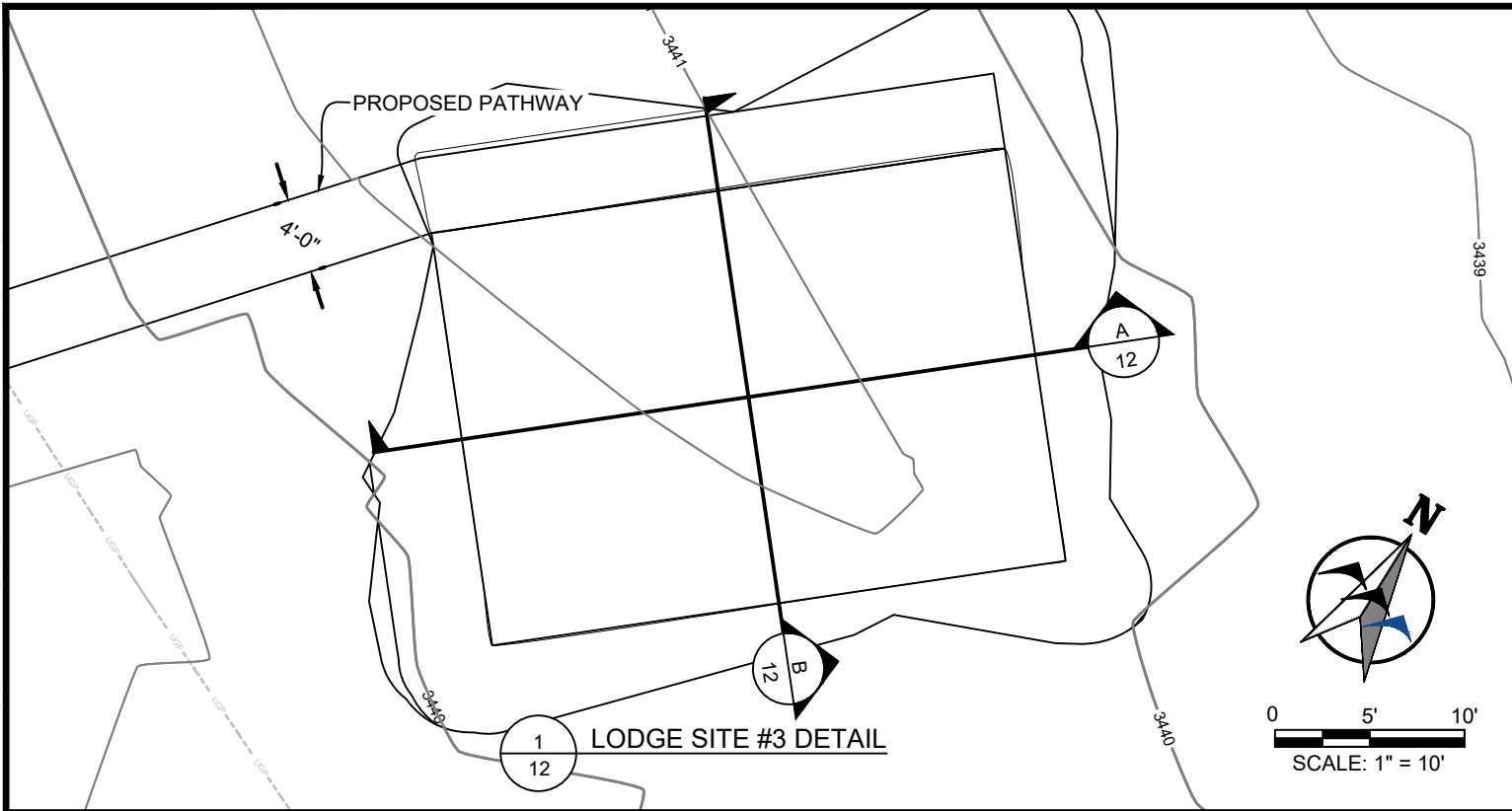


**MONTANA FISH,
WILDLIFE & PARKS**

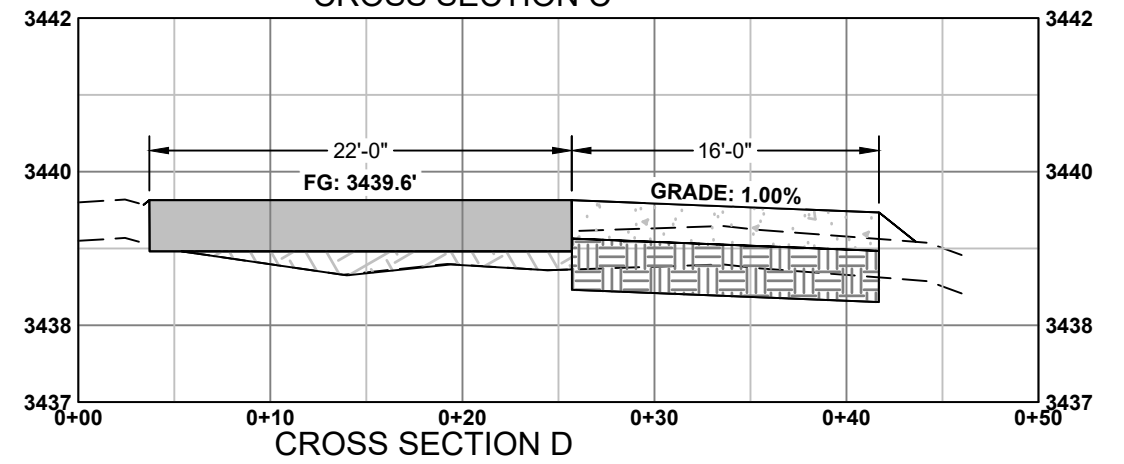
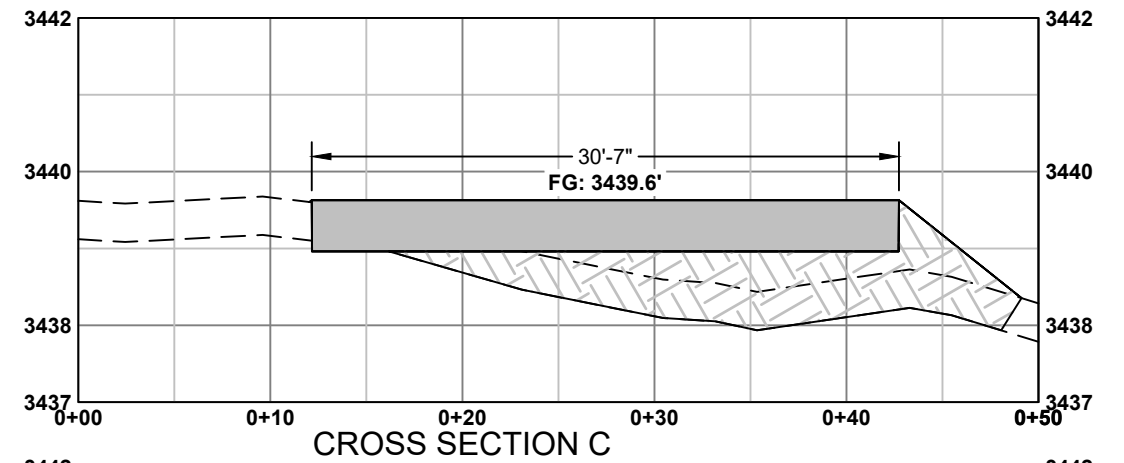
**TONGUE RIVER RESERVOIR STATE PARK
DIVERSIFIED LODGING - LODGE SITE LAYOUT**

SHEET: 11 of 15

k:\Sheridan\montana fish, wildlife and parks\2022\2097_trsp diversified lodging\CAD\Sheets\project_2\PLAN_SET\22097_PRJT2_LDGE_PP_SHT.dwg LDGE_PP (2) 10/4/2023 10:28:05 AM



HORZ SCALE: 1" = 10'
VERT SCALE: 1" = 4'
5H:1V CUT & FILL SLOPES



HORZ SCALE: 1" = 10'
VERT SCALE: 1" = 4'
5H:1V CUT & FILL SLOPES

CIG	9/1/2023
DRAWN BY:	DATE:
DEB	9/1/2023
CHECKED BY:	DATE:

REVISED BY:	DATE:
APPROVED BY:	DATE:

APPROVED BY:	DATE:
APPROVED BY:	DATE:

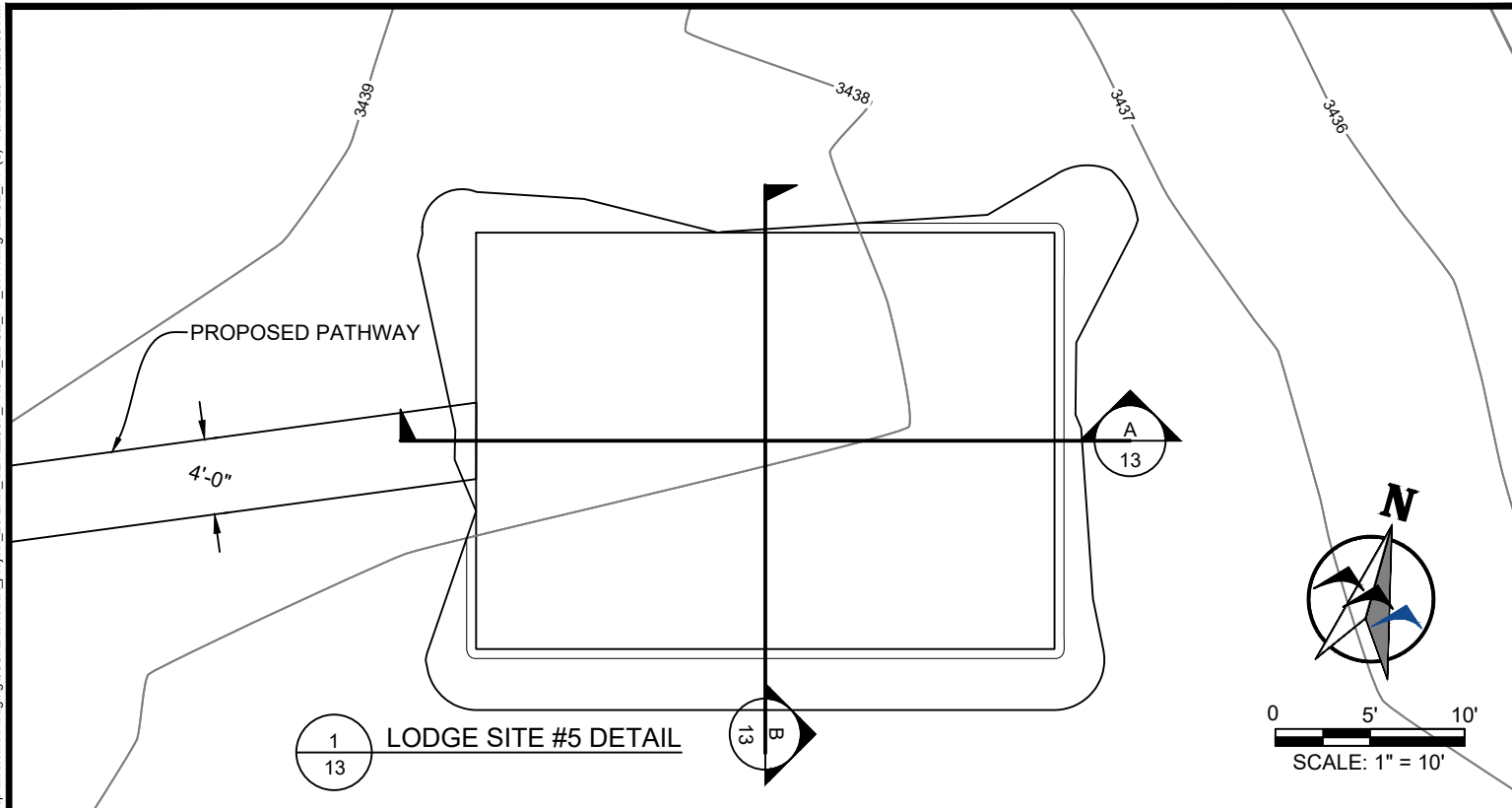


**MONTANA FISH,
WILDLIFE & PARKS**

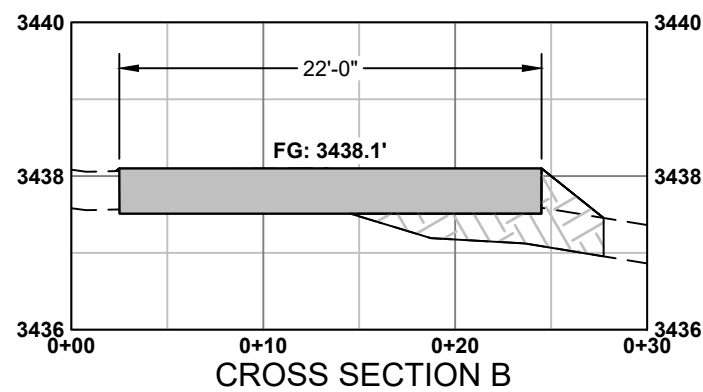
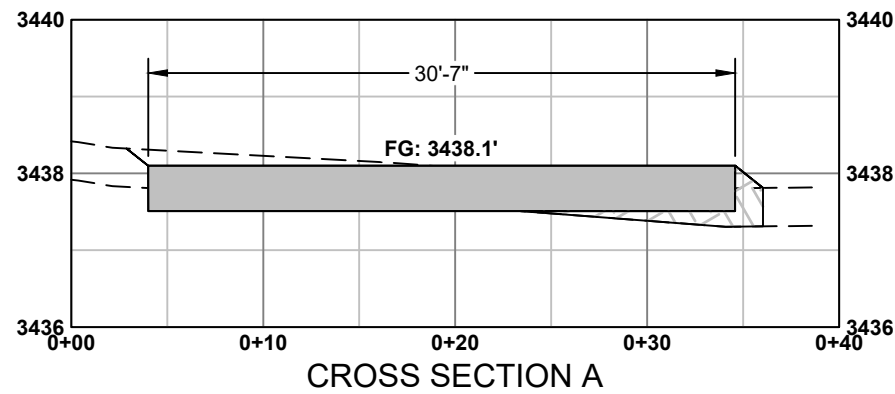
TONGUE RIVER RESERVOIR STATE PARK
DIVERSIFIED LODGING - LODGE SITE LAYOUT

SHEET: 12 of 15

k:\Sheridan\montana fish, wildlife and parks\2022\2097_trsp diversified lodging\CAD\Sheets\project_2\PLAN_SET\2097_PRJT2_LDGE_PP_SHT.dwg LDGE_PP (3) 10/4/2023 10:29:05 AM



THIS SIDE INTENTIONALLY LEFT BLANK



HORZ SCALE: 1" = 10'
VERT SCALE: 1" = 4'
5H:1V CUT & FILL SLOPES

CIG	9/1/2023
DRAWN BY:	DATE:
DEB	9/1/2023
CHECKED BY:	DATE:

REVISED BY:	DATE:
APPROVED BY:	DATE:

APPROVED BY:	DATE:
APPROVED BY:	DATE:

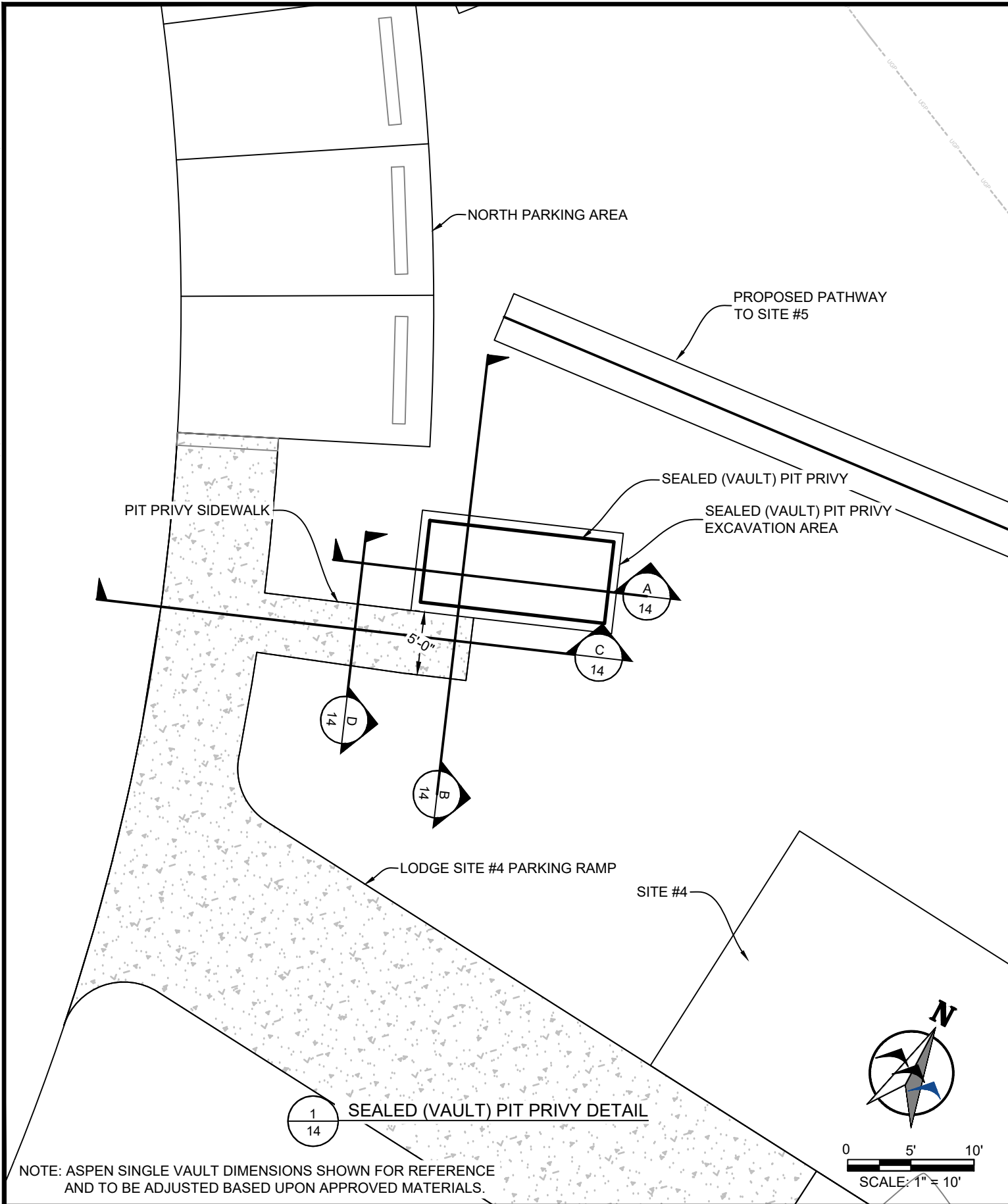


**MONTANA FISH,
WILDLIFE & PARKS**

TONGUE RIVER RESERVOIR STATE PARK
DIVERSIFIED LODGING - LODGE SITE LAYOUT

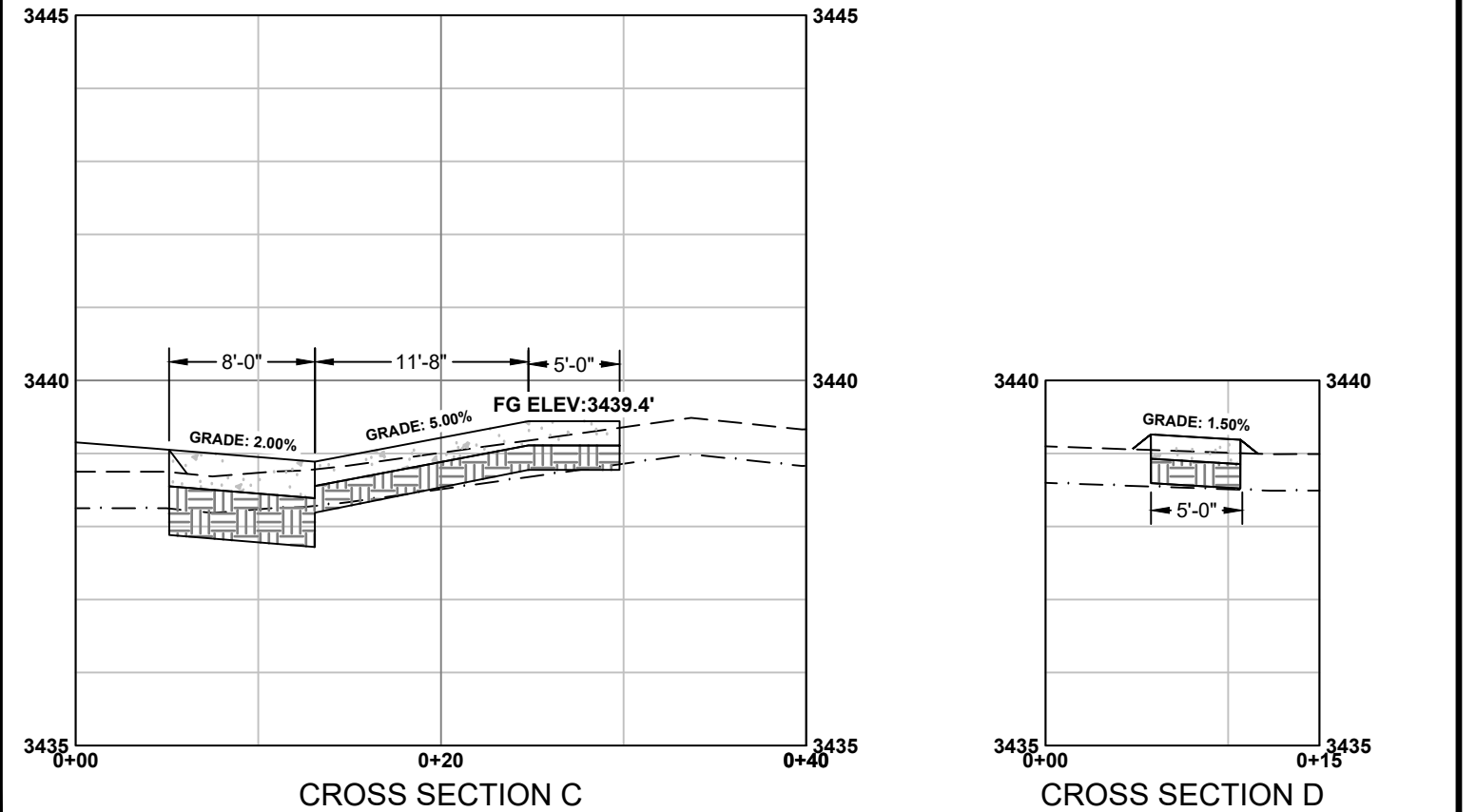
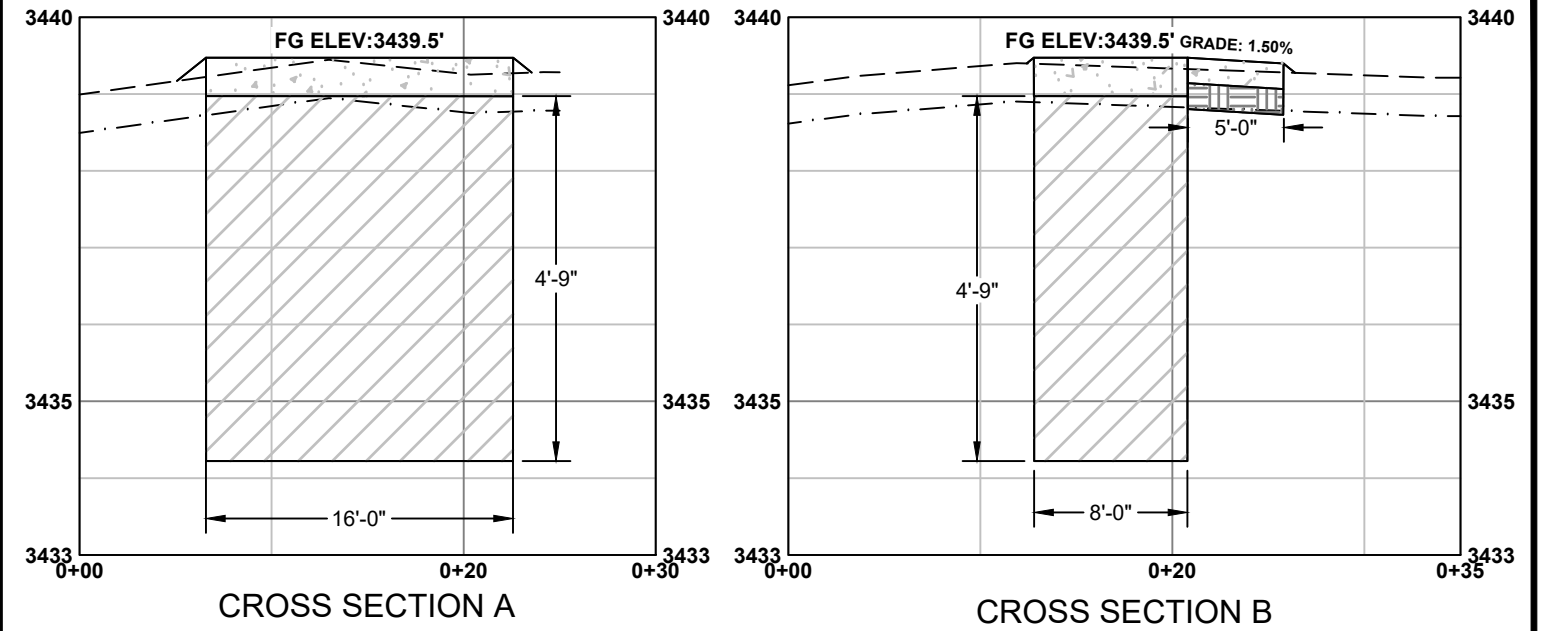
SHEET: 13
of
15

k:\Sheridan\montana fish, wildlife and parks\2022097 trsp diversified lodging\05CAD\Sheets_project_2\PLAN_SET\22097_PRT2_MISC_PP_SHT.dwg VLT_PP (1) 12/4/2023 2:20:06 PM



1
14
SEALING (VAULT) PIT PRIVY DETAIL

NOTE: ASPEN SINGLE VAULT DIMENSIONS SHOWN FOR REFERENCE AND TO BE ADJUSTED BASED UPON APPROVED MATERIALS.



HORZ SCALE: 1" = 10'
VERT SCALE: 1" = 2.5'

--- EXISTING GROUND
- - - TOPSOIL REMOVAL
— FINISHED GROUND

NOTES:

1. MINOR GRADING MAY BE REQUIRED TO GRADE TO DRAIN AWAY FROM STRUCTURE.
2. ASSUMING 6-INCH TOPSOIL REMOVAL.
3. CONTRACTOR'S RESPONSIBILITY TO FOLLOW MANUFACTURER'S GUIDELINES AND SPECIFICATIONS FOR INSTALLATION PROCEDURE.
4. COMPLY WITH ALL APPLICABLE OSHA STANDARDS FOR EXCAVATION.
5. ASPEN SINGLE VAULT DIMENSIONS SHOWN FOR REFERENCE. ADJUST BASED ON APPROVED VAULT AND MATERIALS.

CIG 9/1/2023
DRAWN BY: DATE:
DEB 9/1/2023
CHECKED BY: DATE:

REVISED BY: DATE:
APPROVED BY: DATE:

APPROVED BY: DATE:
APPROVED BY: DATE:

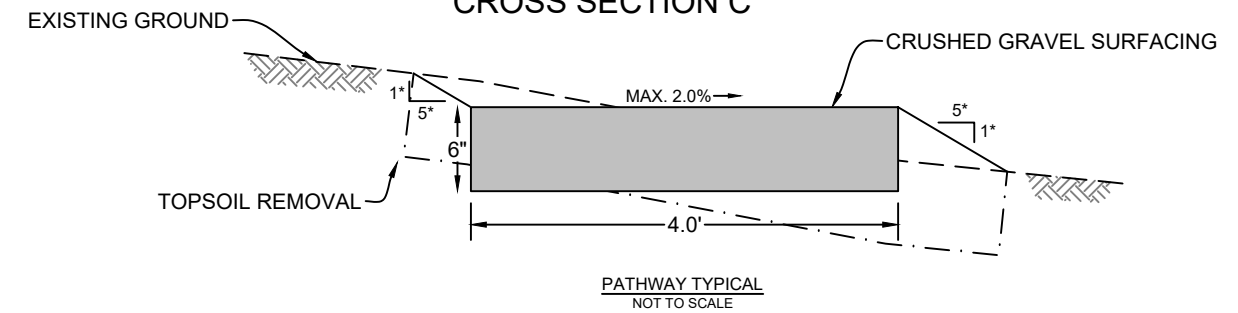
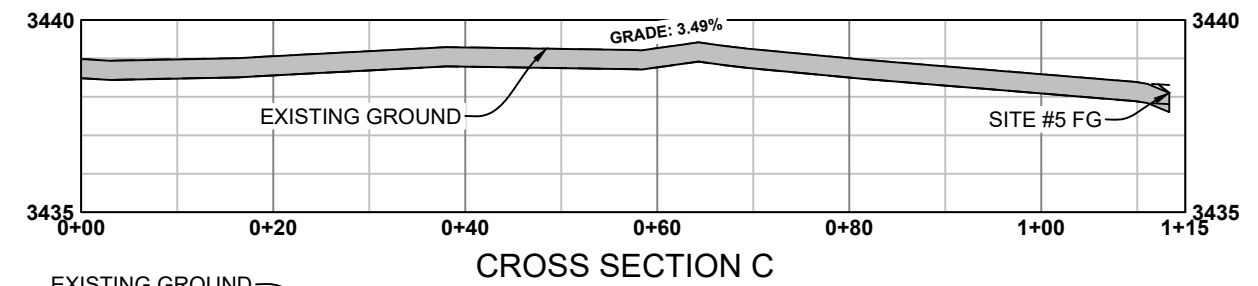
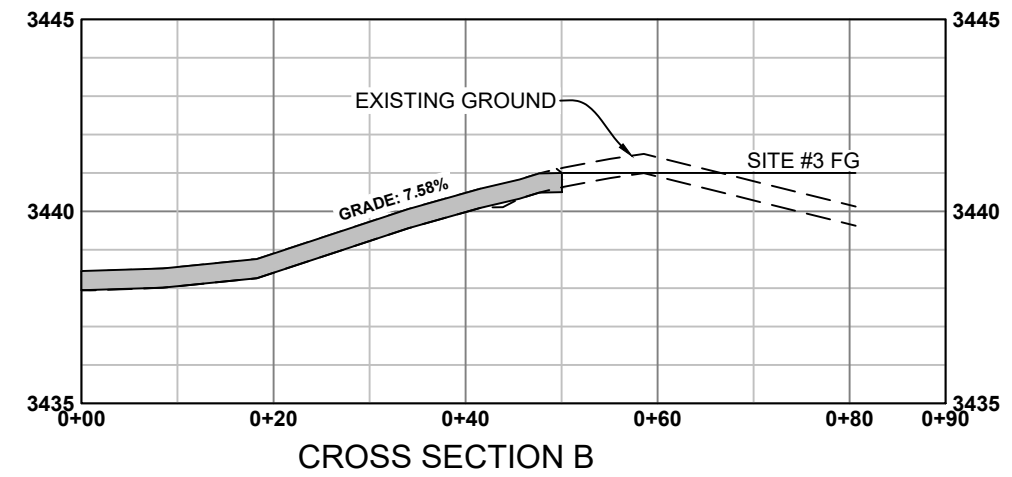
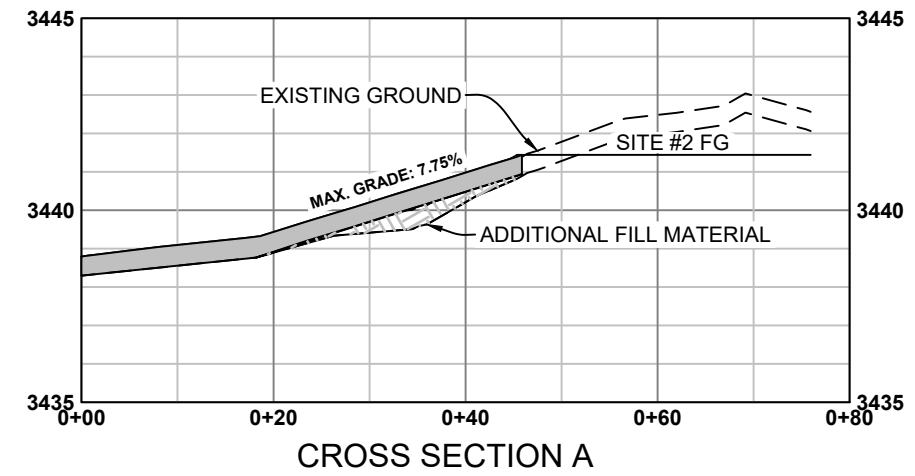
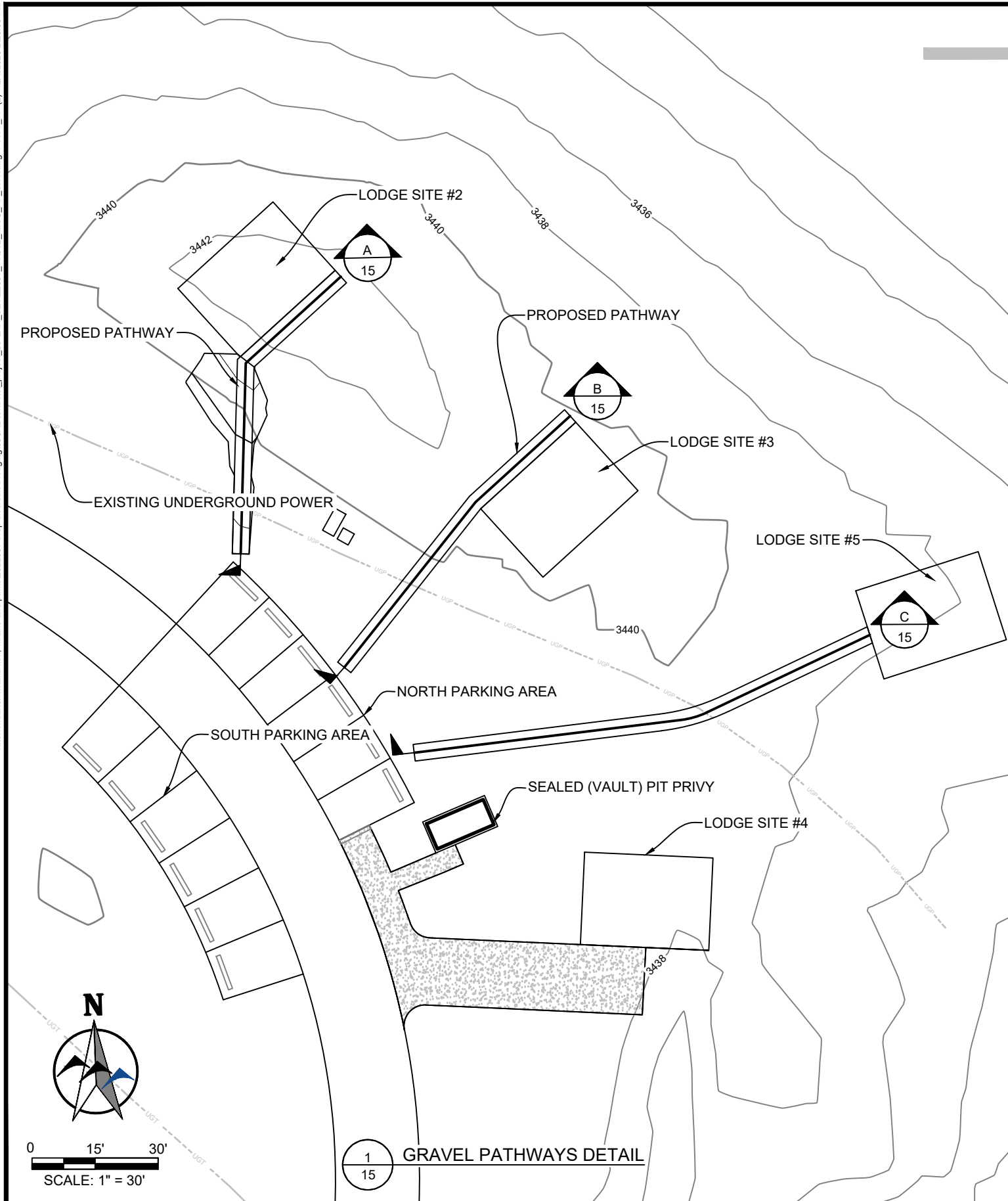


**MONTANA FISH,
WILDLIFE & PARKS**

TONGUE RIVER RESERVOIR STATE PARK
DIVERSIFIED LODGING - VAULT SITE LAYOUT

SHEET: 14
of 15

k:\Sheridan\montana fish, wildlife and parks\2022\2027 trrsp diversified lodging\CAD\Sheets\project_2\PLAN_SET\22097_PRT12_MISC_PP_SHT.dwg PTWY_PP (2) 12/4/2023 2:20:06 PM



NOTES:

1. PATHWAYS SHALL FOLLOW EXISTING GROUND PROFILE. PATHWAY TO LODGE SITE #2 REQUIRES MINOR FILL TO MAINTAIN MAX. GRADE OF 8%.
2. 1" CRUSHED GRAVEL SURFACING MUST BE PLATE COMPACTED TO 95% MAXIMUM DENSITY. REFER TO TECHNICAL SPECIFICATIONS FOR ADDITIONAL INFORMATION.
3. ASSUMING 6-INCH TOPSOIL REMOVAL.
4. CUT/FILL SLOPES TO BE MINIMUM 5H:1V.
5. TOPSOIL AND SEED ALL DISTURBED AREAS.

CIG	9/1/2023
DRAWN BY:	DATE:
DEB	9/1/2023
CHECKED BY:	DATE:

REVISED BY:	DATE:
APPROVED BY:	DATE:

APPROVED BY:	DATE:
APPROVED BY:	DATE:

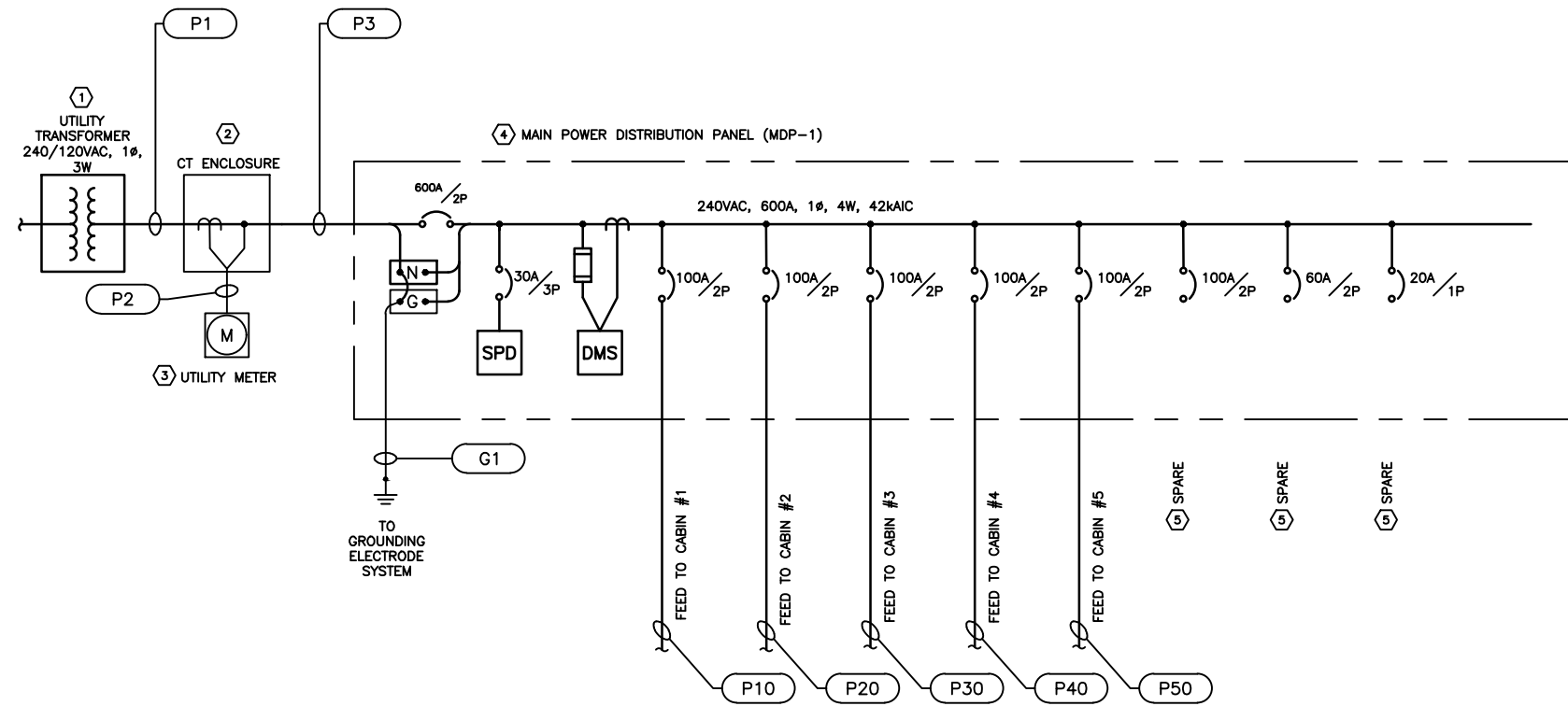


**MONTANA FISH,
WILDLIFE & PARKS**

**TONGUE RIVER RESERVOIR STATE PARK
DIVERSIFIED LODGING - GRAVEL PATHWAY LAYOUT**

SHEET: 15 of 15

C:\pwworking\wrsd\01\03353580\E1.dwg E1 10/4/2023 4:17:17 PM



ONE-LINE DIAGRAM - UTILITY SERVICE

GENERAL NOTES

- UTILITY CONTACT INFORMATION:
TONGUE RIVER ELECTRIC COOPERATIVE, INC. (TRECO)
(406) 784-2341
PO BOX 138, ASHLAND, MT 59003

KEY NOTES:

- TRECO WILL PROVIDE AND INSTALL NEW UTILITY TRANSFORMER, CONCRETE PAD FOR TRANSFORMER AND ALL PRIMARY CONNECTIONS AND SECONDARY CONNECTIONS UP TO METER.
- CONTRACTOR PROVIDED AND INSTALLED CT ENCLOSURE TO MEET TRECO STANDARDS.
- CONTRACTOR PROVIDED AND INSTALLED METER BASE TO MEET TRECO STANDARDS.
- CONTRACTOR PROVIDED AND INSTALLED EQUIPMENT TO BE LOCATED NEAR NEW UTILITY TRANSFORMER.
- CONTRACTOR TO PROVIDE MINIMUM (6) SPARE 100AMP/2P BRANCH CIRCUIT BREAKERS, (6) 60AMP/2P BRANCH CIRCUIT BREAKERS, AND (6) 20AMP/1P IN MDP-1 IN ADDITION TO THOSE SHOWN.

ELECTRICAL LEGEND

- LOW VOLTAGE CIRCUIT BREAKER (CB). RATING AND NO. OF POLES AS SHOWN.
- TRANSFORMER
- VOLTAGE TRANSFORMER (VT, PT, OR CPT)
- CURRENT TRANSFORMER (CT)
- CONDUIT TURNING UP
- CONDUIT TURNING DOWN
- CIRCUIT CONTINUATION
- CONDUIT STUBBED OUT AND CAPPED
- CONDUIT TAG OR CIRCUIT NUMBER - WIRE AND CONDUIT SIZE AS SPECIFIED IN CIRCUIT SCHEDULE ON THE SHEETS
- GROUND
- UTILITY WATT-HOUR METER PER UTILITY REQUIREMENTS
- SURGE PROTECTIVE DEVICE
- DIGITAL METERING SYSTEM
- ELECTRICAL PANEL
- JUNCTION OR PULL BOX

CONDUIT AND WIRE SCHEDULE

TAG	CONDUIT SIZE PER RUN	WIRE PER RUN	FROM	TO	NOTES
P1	(2) sets of 3"	(2) sets, (4) 350 AWG, (1) 1/0 AWG GND	UTILITY TRANSFORMER	UTILITY CT ENCLOSURE	
P2	1"	BY UTILITY	UTILITY CT ENCLOSURE	UTILITY METER	ASSUMED TO BE (13) 14AWG
P3	(2) sets of 3"	(2) sets, (4) 350 AWG, (1) 1/0 AWG GND	UTILITY CT ENCLOSURE	MAIN DISTRIBUTION PANEL (MDP-1)	
P10	1 1/2"	(3) 2 AWG, (1) 8 AWG GND	MAIN DISTRIBUTION PANEL (MDP-1)	CABIN #1	
P20	1 1/2"	(3) 2 AWG, (1) 8 AWG GND	MAIN DISTRIBUTION PANEL (MDP-1)	CABIN #2	
P30	1 1/2"	(3) 2 AWG, (1) 8 AWG GND	MAIN DISTRIBUTION PANEL (MDP-1)	CABIN #3	
P40	1 1/2"	(3) 2 AWG, (1) 8 AWG GND	MAIN DISTRIBUTION PANEL (MDP-1)	CABIN #4	
P50	1 1/2"	(3) 2 AWG, (1) 8 AWG GND	MAIN DISTRIBUTION PANEL (MDP-1)	CABIN #5	
G1	3/4"	(1) 4/0 AWG BARE CU	MAIN DISTRIBUTION PANEL (MDP-1)	GROUNDING ELECTRODE SYSTEM	



10/4/2023

TS 10/2/2023
DRAWN BY: DATE:
LK 10/2/2023
CHECKED BY: DATE:

REVISED BY: DATE:
APPROVED BY: DATE:

APPROVED BY: DATE:
APPROVED BY: DATE:

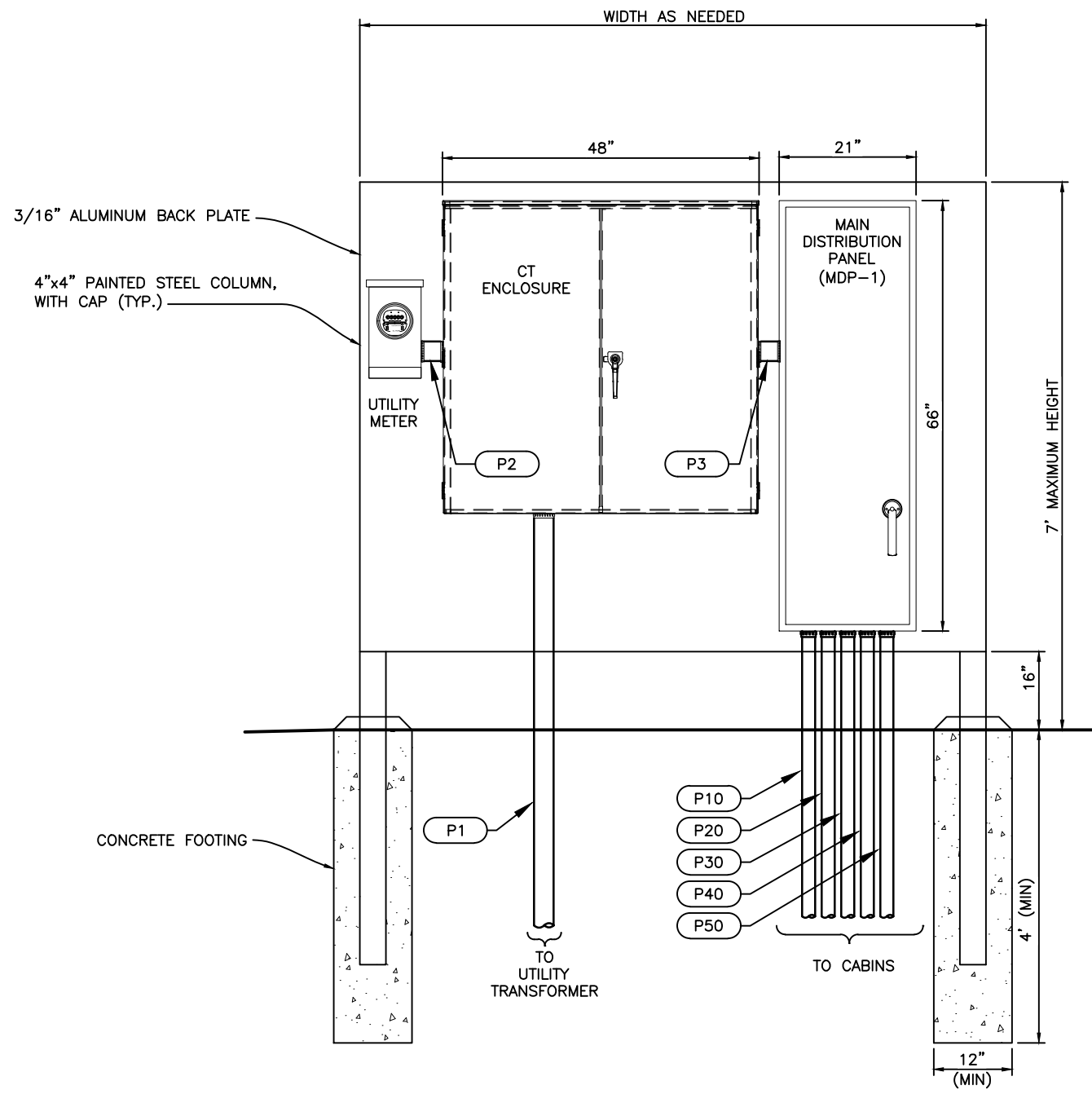


**MONTANA FISH,
WILDLIFE & PARKS**

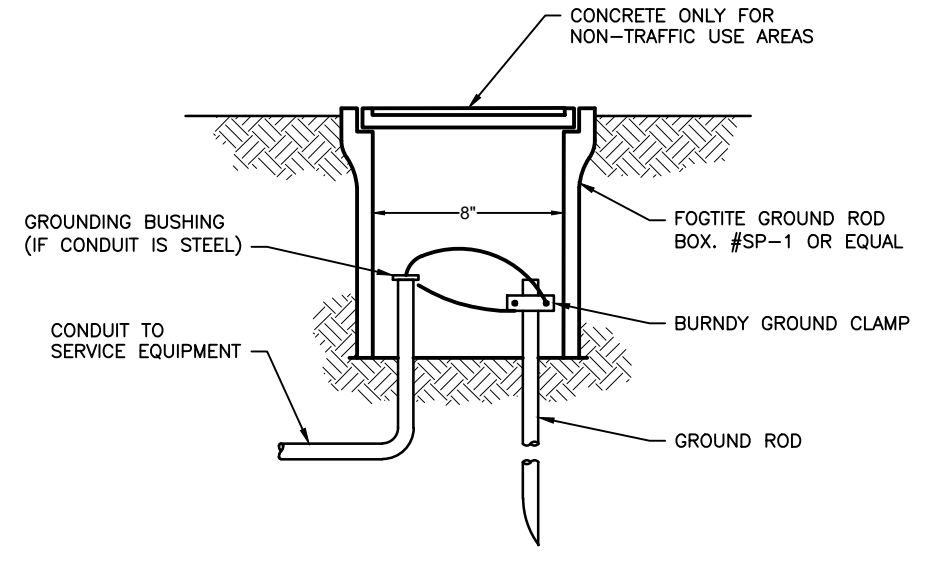
TONGUE RIVER RESERVOIR STATE PARK
DIVERSIFIED LODGING - ELECTRICAL ONE-LINE DIAGRAM

SHEET: **E1**

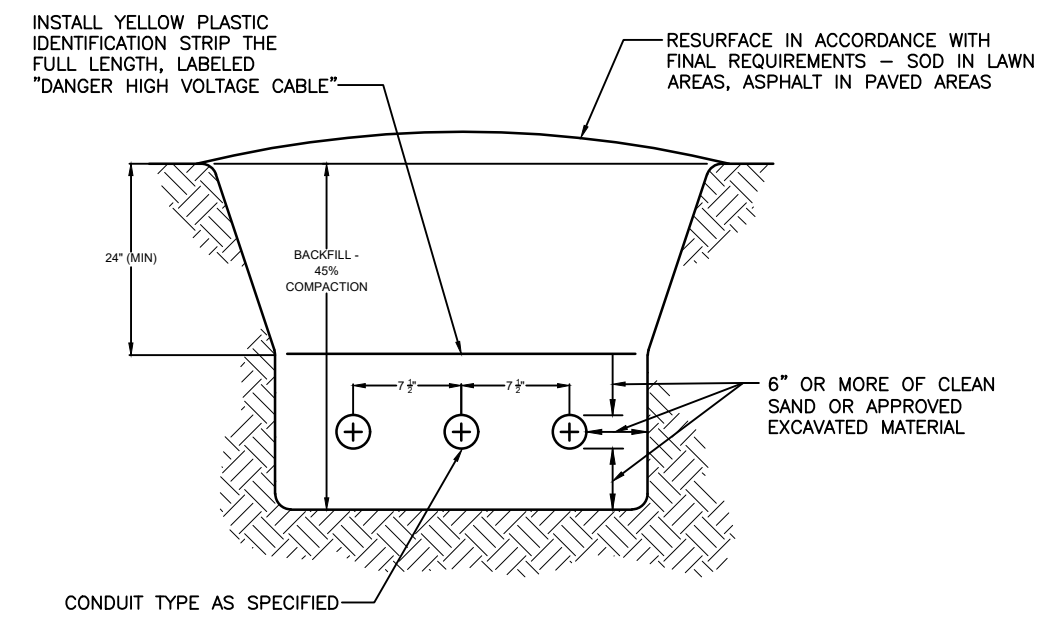
C:\pwworking\west01\03353580\E2.dwg E2 10/4/2023 2:29:37 PM



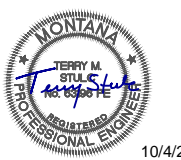
1
-
ELECTRICAL EQUIPMENT BACKBOARD DETAIL
SCALE: NTS



2
-
GROUND ROD DETAIL
SCALE: NTS



3
-
TYPICAL TRENCH DETAIL
SCALE: NTS



10/4/2023

TS	10/2/2023	REVISI	DATE:	APPROVED BY:	DATE:
DRAWN BY:	DATE:	REVISI	DATE:	APPROVED BY:	DATE:
LK	10/2/2023	APPROVED BY:	DATE:	APPROVED BY:	DATE:
CHECKED BY:	DATE:	APPROVED BY:	DATE:	APPROVED BY:	DATE:



TONGUE RIVER RESERVOIR STATE PARK

DIVERSIFIED LODGING - ELECTRICAL DETAILS

SHEET: E2