



RANCHERS

— STEWARDSHIP ALLIANCE —



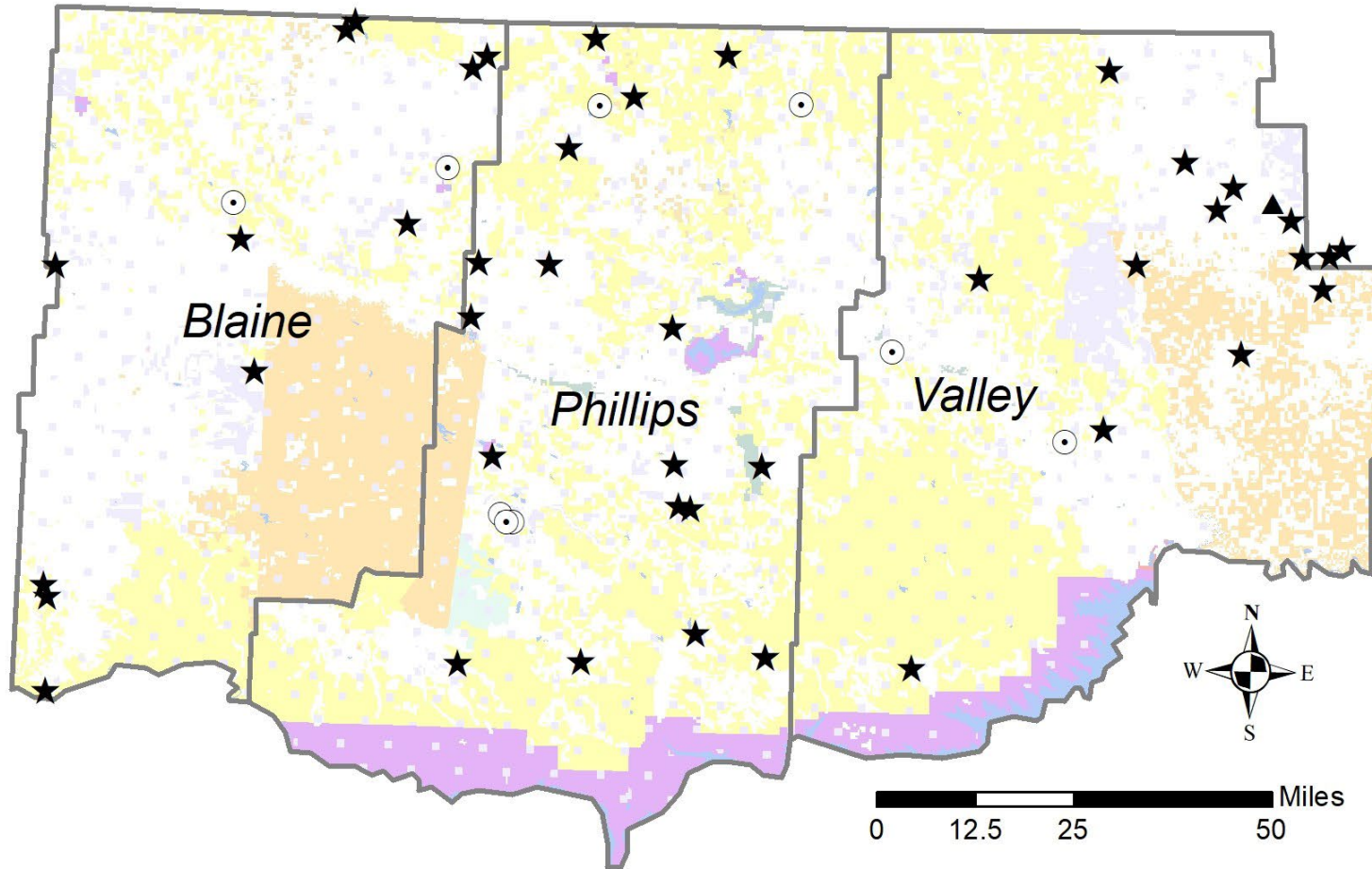
RSA Projects 2017-2021

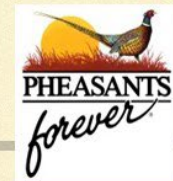
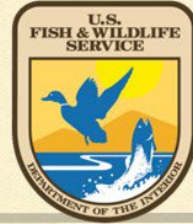
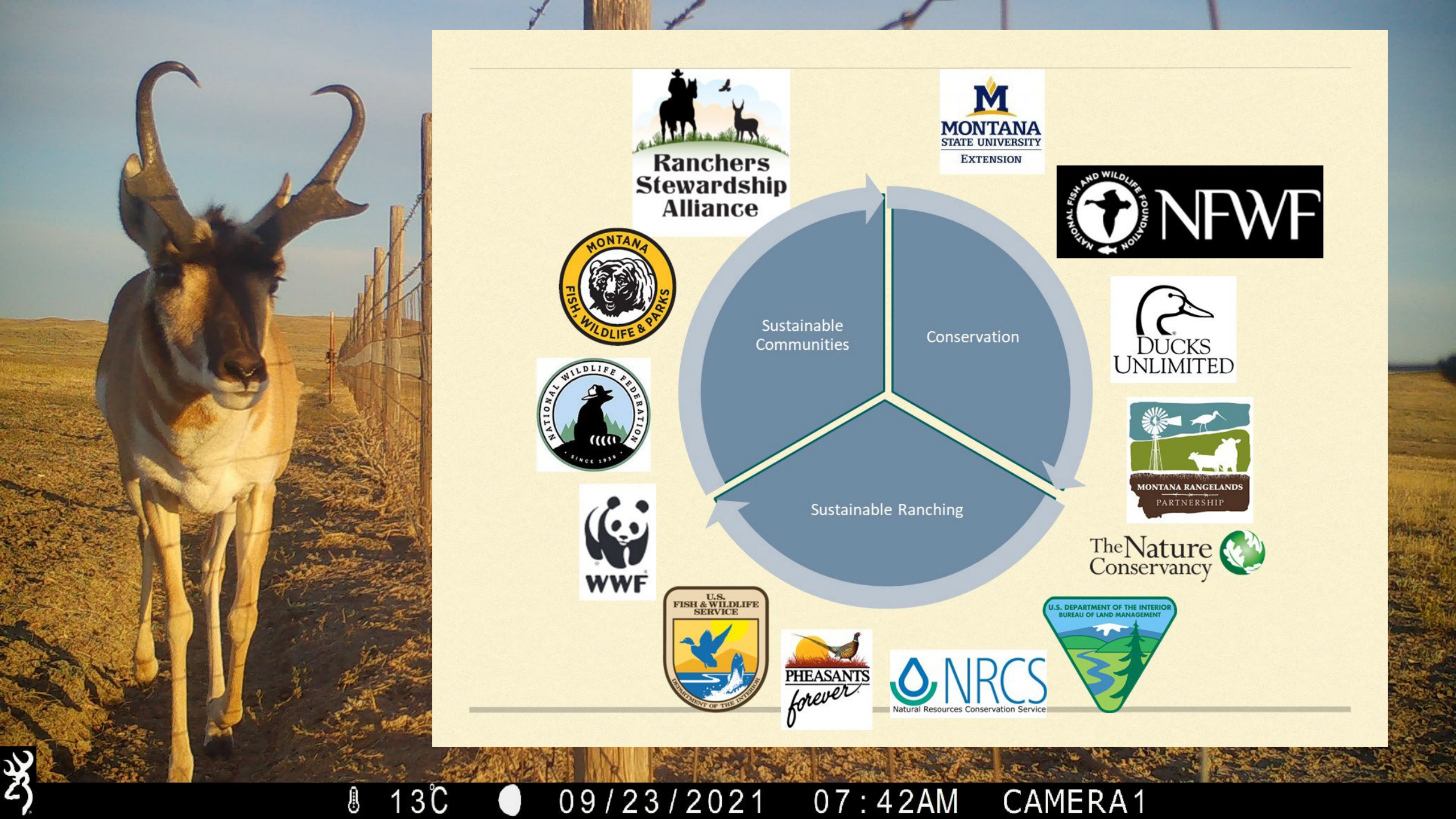
Legend

Project Locations

- ★ Northern Great Plains
- Big Game Migration
- ▲ Other Funding

- County Boundaries
- US Bureau of Land Management
- US Bureau of Reclamation
- US Fish and Wildlife Service
- National Park Service
- US Army Corps of Engineers
- US Dept of Defense
- Montana State Government
- Montana School Trust Lands
- Montana Fish, Wildlife, and Parks
- Montana DNRC Water Projects
- Local Government
- County property
- Bureau of Indian Affairs Trust
- Turtle Mountain Tribal Lands
- Private Land
- The Nature Conservancy
- Water
- Water - federal
- Water - tribal
- Water - private
- Water - navigable
- Water - state/federal



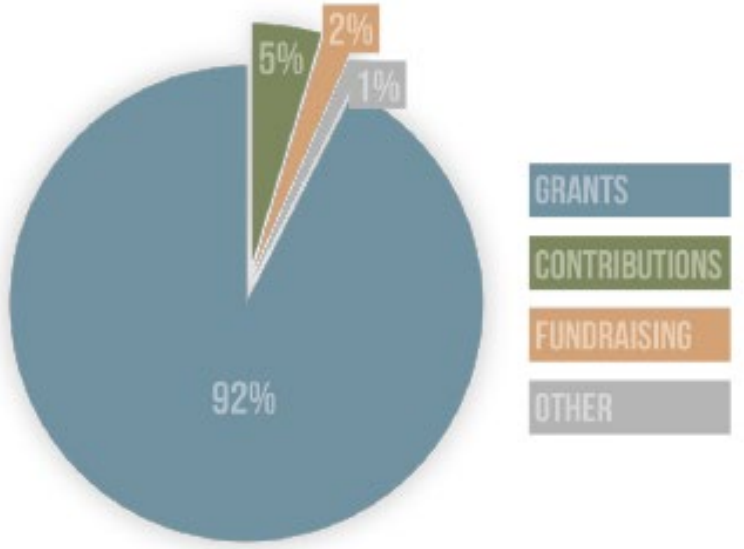


Sources of Support

MAKING OUR WORK POSSIBLE.

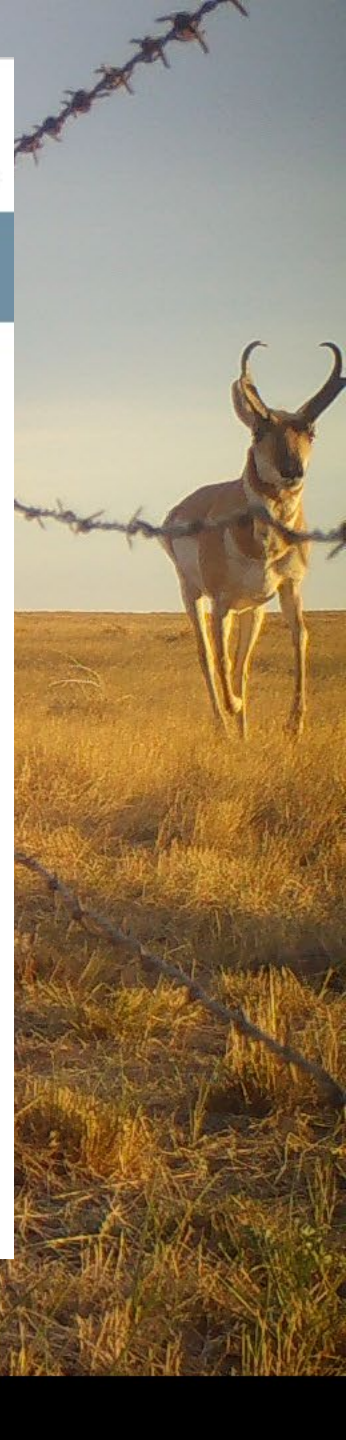
SOURCES OF SUPPORT

Contributions.....	\$21,188
Fundraising	\$8,900
Other	\$3,991
Grants	\$418,403
Total	\$452,482



PARTNERS MAKE IT POSSIBLE

NATIONAL FISH AND WILDLIFE FOUNDATION	U.S. FISH & WILDLIFE SERVICE	BUREAU OF LAND MANAGEMENT
WINNETT ACES	NATURAL RESOURCES CONSERVATION SERVICE	BERNIE HART ESTATE
BROWNING KIMBALL FOUNDATION	MONTANA GRAZING LANDS CONSERVATION INITIATIVE	PLANK STEWARDSHIP INITIATIVE
MONTANA FISH, WILDLIFE & PARKS	NATIONAL WILDLIFE FEDERATION	WORLD WILDLIFE FUND
THE NATURE CONSERVANCY	DUCKS UNLIMITED	PHEASANTS FOREVER



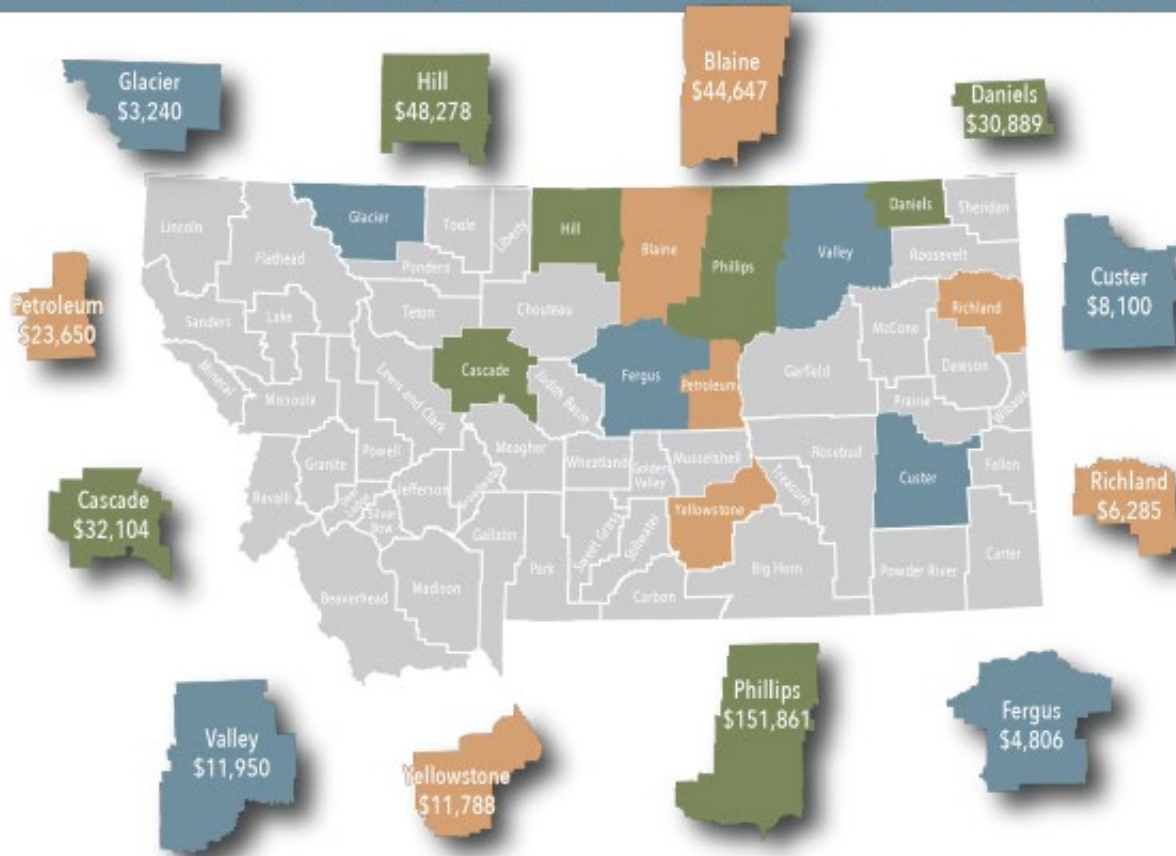
Community Impact

DOLLARS MAKING A DIFFERENCE.

We believe that when ranchers succeed, we can help wildlife succeed, and, in turn, our rural communities succeed. That is where the strength of our mission statement, "Ranching, Conservation, Communities - a Winning Team!" is found. Investing in the ranching economy is also an investment in our rural economies.

We work hard to hire local contractors for grazing improvement work, but the economic impact expands just beyond our own counties.

Here's where \$377,598 project dollars were invested around the state in 2021.



12°C



10/24/2021

12:15PM

CAMERA 1

Ranching, Conservation, Communities

A MISSION WITH IMPACT.

 18

Ranch families in Phillips, Blaine, and Valley Counties assisted by Ranchers Stewardship Alliance in implementing grazing land improvements aimed to increase the resiliency of their ranch business, our grasslands, wildlife habitat, and ultimately improve their impact on our local communities.

\$377,000

Funds committed by RSA for land improvement projects.

\$1.8 MILLION

Funds committed by partners and ranchers themselves for improvement projects.

\$2.1 MILLION

Total 2021 investment in grassland and grazing improvement projects.

SIXTY



Miles of wildlife friendly fence built.

4,500



Acres of grazing habitat restored to perennial habitat and native grasses.

192,595



Feet of water pipeline laid for enhanced water systems.

SIXTY



Livestock tanks installed with 25 bird escape ramps.

FIVE



New water wells drilled for stock tanks and enhanced water systems.



15°C



10/09/2021

06:01PM

CAMERA 1

BANKING ON YOUR BUSINESS

a RANCHING FOR PROFIT Economics Workshop

September 29 - 30, 2022 | Malta, MT



Instructor
DALLAS MOUNT
will teach

- Economics vs Finance
- Overheads and direct costs
- Ranch enterprise analysis
- Gross margins and applications
- Ranch economic plan development
- Economic plan financial test

With special
Young + Beginning
Rancher
session

A 2-hour session specific to young & beginning ranchers will expand on topics discussed during day one while applying them specifically to the scenario of starting an ag operation and the practical application to that process.



Ranching, Conservation, Communities - a Winning Team!
www.ranchstewards.org | 406.654.1405

Like what you saw today?
Register for the full *Ranching for Profit* school here.

**QR code link
to RFP
Registration**

2022 WEBINAR SERIES
RURAL RESILIENCE
Ranchers Stewardship Alliance

Growing our ranching and rural community's financial, ecological and social resilience with expert speakers on soil health, ranch finances, grazing innovations and more.

Jan. 20 | Building resilient relationships for ranching with Wally Olson, Olson Ranch, LLC & ranching.io

FEB. 17 | Advanced mapping technology for resilient rangelands with Bill Wilson, Wilson Ranch & Randy Alford, UN Assistant Professor of Rangeland Ecology

MARCH 17 | Reflections on Absorbment nutrition for resilience with Fred Provenza, Utah State University professor emeritus of Rangeland Ecology

APRIL 21 | Reviving and restoring desert landscapes with Investock with Alejandro Carrillo, Participaciones del Cordero & Adam Williams, Grass Fed Insights, LLC, Understanding Ag, LLC, & Soil Health Academy

Find a detailed schedule, event descriptions and registration online!

SCAN ME www.ranchstewards.org

7 p.m., 3rd Thursday | Jan. 20, Feb. 17, March 17, April 21

YOU'RE INVITED
RANCHERS STEWARDSHIP ALLIANCE
PARTNER BBQ

THURSDAY | JUNE 23 | 6 P.M.
Tralton Park (Middle Shelter)
A.E. Catering
provided by Ducks Unlimited
hosted by **DUCKS UNLIMITED**



Questions?



22°C



09/21/2021

06:34PM

CAMERA 1