



Region 7

Citizen's Advisory Council Meeting

Upland Game Bird Enhancement Program

Spring 2024



Region 7 Strategic Plan

- Winter Cover
- Nesting Cover
- Grass stand rejuvenation
- Food plot development
- Grazing Systems
- Wetland Enhancement & Restoration
- Conserve native sage brush habitats
- Priority counties- Dawson, Fallon, McCone, Prairie, Richland and Wibaux



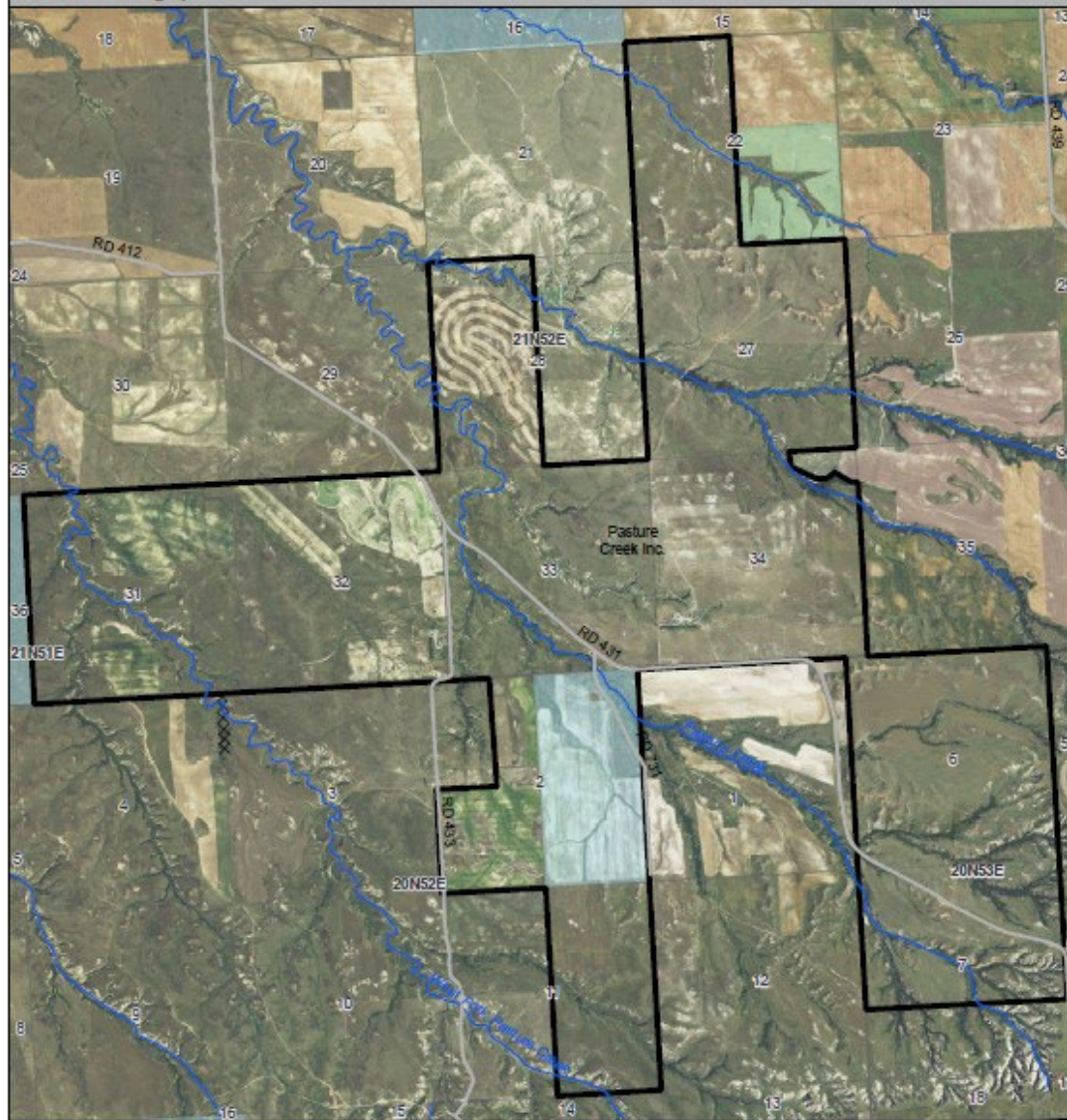
Upcoming Habitat Projects

- Working on multiple Habitat Management Lease (HML)
- Potential CRP interest
- Shelterbelt interest
- Cover Crop interest
- Pasture Creek HML/Virtual Fence Project



Exhibit A: Upland Game Bird Enhancement Program Habitat Site MONTANA FWP

Veverka Grazing System



**UPLAND GAME BIRD
ENHANCEMENT PROGRAM**

- County Road
- XXX Fence
- ▭ Block Management Boundary
- State Trust Lands
- Local Government

County(s): Dawson
FWP Region 7
FWP Staff: Justin Hughes
Date: 12/12/2023



Possession of this map does not constitute legal access to private land enrolled in the UGEBP.
This map may not depict current property ownership outside the enrolled Program Area.
Data provided by MTFWP and Montana State Library, Helena, MT.

0 0.5 1
Miles



Fall 2023 Enrollments

HML (Habitat Management Lease) on DNRC Lands

- 3 contracts for 3-5 years
- 956 habitat acres
- 18,527 DNRC access acres

HML on Block Management

- 2 contracts for 5 years
- 102 habitat acres
- 1,280 access acres
- Type I BMA's



Fall 2023 Enrollments

HML Contracts

- 3 new leases for 5 years
- 557 habitat acres
- 779 access acres
- Walk-in Upland Bird Hunting

Fence Contract

- 1 contract for 4 years
- 35 habitat acres
- 2,203 access acres
- Type II BMA



Fall 2023 Enrollments

Grain Stubble Management

- 1 contract for 4 years
- 320 habitat acres
- 1,354 access acres
- Walk-in Upland Bird Hunting

Winter Food & Cover Plots/ Standing Grain Food Plot

- 3 contracts for 2-5 years
- 53 habitat acres
- 23,846 access acres
- BLM and Type I BMA's



Fall 2023 Enrollments



Managed Haying Project

- 1 contract for 5 years
- 299 habitat acres
- 638 access acres
- Walk-in permission free access

Fall 2023 Enrollment Totals

- 14 contracts
- 7,960 habitat acres
- 53,809 access acres
- 2–5-year agreements



Current Habitat Conditions

- Variable amounts of cold temps
- Variable amounts moisture
- Residual cover looks good
- Overall mild winter





QUESTIONS?

