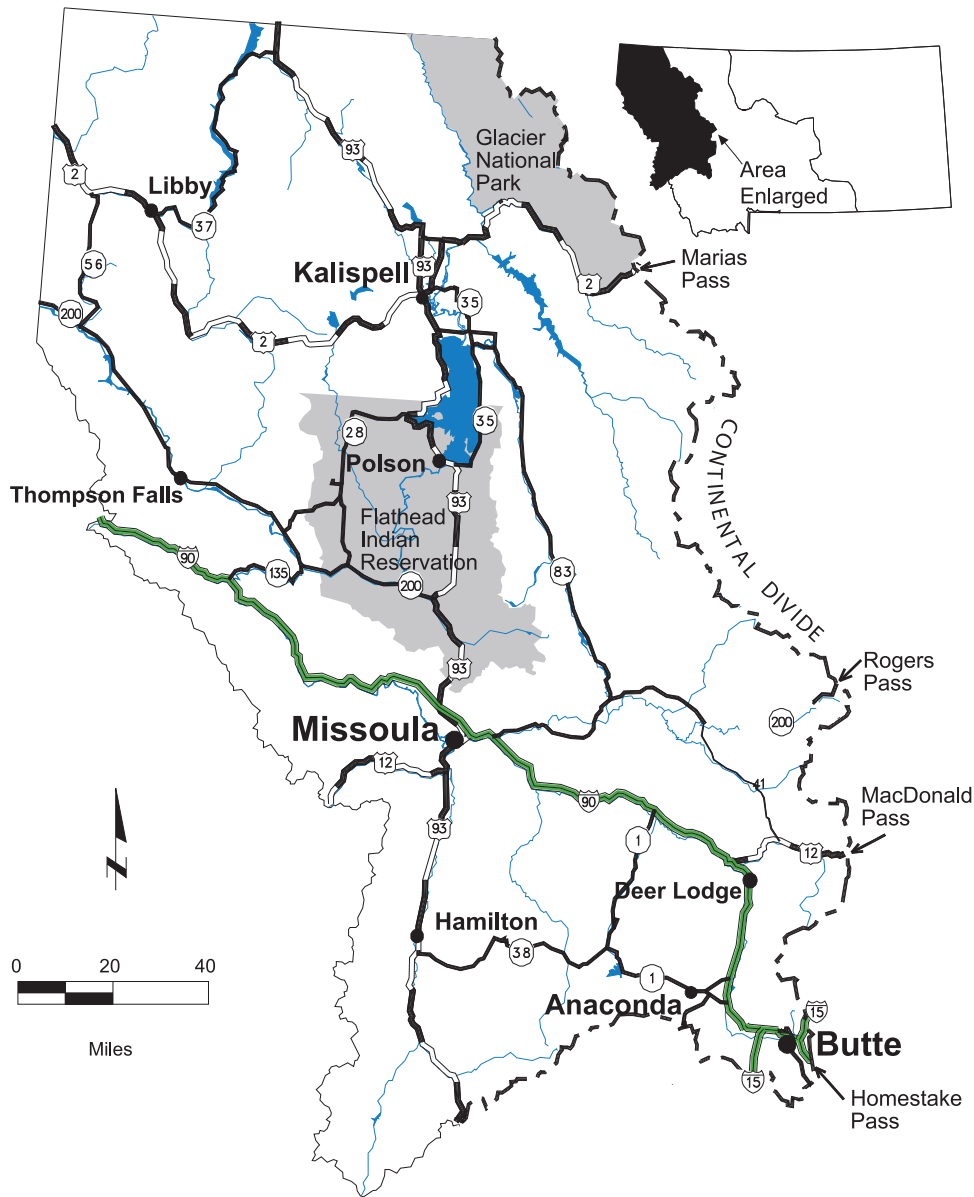


Western Fishing District



Areas excluded from fishing districts. Additional regulations may apply. Other federal or tribal permits may be required.

The Western Fishing District includes all waters in Montana west of the Continental Divide.

Columbia River Basin – Inspection Prior to Launch: All watercraft crossing the Continental Divide into the Columbia River Basin are required to be inspected prior to launch.

For additional information about fishing in this district, please call the following regional headquarters Monday-Friday 8:00 a.m. - 5:00 p.m.:

- Kalispell**406-752-5501
- Missoula**406-542-5500
- FWP Headquarters**.....406-444-2449
- Hearing Impaired (use Montana Relay)**.....7-1-1 or 1-800-253-4091

Western District Standard Regulations

Beaver Ponds: Beaver ponds on streams are governed by the same regulations that govern the streams.

Boat and Motor Restrictions: All passengers under the age of 12 must wear a personal floatation device (PFD) at all times when the boat is in motion if the boat is less than 26 feet long. A wearable, U.S. Coast Guard approved PFD must be available for each occupant of any boat.

Closed Waters: Waters operated as fish hatcheries and rearing ponds by FWP and the US Fish and Wildlife Service shall be closed to fishing at all times. Waters in which FWP operates fish traps and other structures are closed to fishing as posted. Certain water-supply lakes, streams and hazardous areas are also closed as posted.

Dam Closures and Use Restrictions: In the interest of public health and safety, certain areas above and below most dams are closed to the public. These restrictions include areas where no public access is allowed below the ordinary high-water mark. The restricted areas are identified and delineated by signs and/or boat restraining systems.

The following dams are closed to all boating, sailing, floating, swimming, fishing or other recreational activity as marked by boat restraining systems or as posted to restrict access. Other dams not listed here may also be posted for restricted access. For more information call the FWP Fishing Access Coordinator at 406-444-2449, or contact the Army Corp of Engineers (ACOE) 406-293-7751, x255, AVISTA 1-800-227-9187, Bureau of Reclamation (BOR) 406-387-5241, CSKT 406-883-2888, Northwestern Energy (NWE) 888-467-2669 or PacificCorp Energy 503-813-6666.

Big Fork Dam (PacifiCorp, Lake County)	Libby Dam (ACOE, Lincoln County)
Hungry Horse Dam (BOR, Flathead County)	Noxon Rapids Dam (AVISTA , Sanders County)
Kerr Dam (CSKT, Lake County)	Thompson Falls Dam (NWE, Sanders County)

Flathead Indian Reservation: A tribal permit is required to fish on waters within the boundary of the Reservation. Call tribal headquarters at 406-675-2700 for information.

Irrigation Canals and Ditches: Man-made irrigation canals and ditches are open to fishing year round unless stated otherwise in exceptions to standard regulations. The same daily and possession limits apply to them as for rivers/streams. Anglers need to be aware that the Montana Stream Access Law does not apply to canals and ditches. Under Montana’s trespass law, permission to access these waters is implied if the land is not posted, but that implied permission may be revoked at any time. It is best to obtain the explicit permission of the landowner. Where ditches cross land belonging to others, rights of the ditch owner versus those of the landowner vary. Therefore, always obey any sign clearly marking the ditch as closed to public access or fishing.

Reservoirs: Under normal operations, reservoir pool elevation, surface acreage and the mouths of the inlet stream(s) are expected to vary throughout the year. An imaginary line connecting the reservoir shoreline across the mouth of the stream marks the boundary between reservoir and stream/river, and the boundary will move as reservoir levels change. Streams are defined by a sloped streambed that results in a defined current flow between two discernible stream banks. Stream regulations apply upstream from the mouth of the reservoir and often are managed under seasons, limits and special regulations that differ from the reservoir regulations.

Sloughs: Sloughs with surface water connecting to a river at any time during the year fall under the river regulations for that river, unless listed under the

exceptions. Sloughs with no surface water connecting to a river at any time during the year fall under standard lake limits unless listed under the exceptions.

Transporting Live Fish: An import permit is required to bring live fish into Montana. It is unlawful to possess or transport live fish away from the body of water in which the fish were taken except for transportation of fish for valid (approved) commercial purposes or as authorized by FWP.

Methods of Taking Fish

- A valid fishing license is required for all types of fishing.
- Spears and bows count as lines for purposes of determining line limits.
- All unattended fishing devices (crayfish traps, minnow traps, fish traps, setlines, etc.) must have the angler's name and phone number or name and ALS# attached.

Hook and Line Limits

Open Water

Rivers and Streams

- 1 line with 2 hooks per line, with or without a rod. The rod or line must be attended and in the angler's immediate control.

Lakes and Reservoirs

- 2 lines with 2 hooks per line, with or without a rod. Each line must be attended and in the angler's immediate control.

Ice Fishing

Lakes and Reservoirs

- 2 lines with 2 hooks per line on all lakes and reservoirs open to fishing. When a line is used through the ice, the angler need not be in immediate control but must be in the vicinity and in visual contact with the line.

Size of Hole

- In waters not open to spearing, the maximum size hole that may be used for ice fishing is 144 square inches or 12 inches in diameter.
- There is no size limit for a hole used for fishing with a spear.

Shelters: It is unlawful to use any ice fishing shelter not conforming to the following rules:

Definition/use: Any hut or enclosure constructed of any material, except ice or snow, for the purpose of ice fishing.

Identification: Identification must be painted on or otherwise affixed to all unattended shelters in legible, 2-inch letters plainly visible at a distance of 100 feet. Identification must include the owner's name and address, name and phone number, or 9/10-digit ALS number. Attended shelters at Brown's Lake and Georgetown Lake must also be identified.

Inspection: Each closed shelter shall have a door that an officer may readily open from the outside for inspection when it is occupied.

Waste and Rubbish Disposal: Owners and occupants of shelters are required to keep their shelters (and the area immediately around them) free from rubbish and trash. Anglers must remove waste materials before they leave for the day.

Removal: Daily removal of shelters is required on:

- Browns Lake (near Ovando)
- Echo Lake (near Anaconda)
- Georgetown Lake

Removal After the Season: The owner of an ice fishing shelter shall remove it from the ice before it becomes irretrievable at the end of the season, or within five days from receipt of notification from FWP to remove the shelter.

Bow and Arrow: All waters are closed to bow-and-arrow taking of game and non-game fish, except as noted under District Exceptions.

Crossbows: Unlawful.

Nets and Traps: Landing nets may be used for landing hooked fish. See Bait Regulations for use of nets to harvest bait fish.

Setlines: Setlines (unattended lines) are not allowed in the Western Fishing District.

Snagging: All waters are closed to snagging of game and non-game fish, except as otherwise noted under District Exceptions.

Spearing: All waters are closed to spearing of game and non-game fish except as otherwise noted under District Exceptions.

Bait Regulations

- Game fish, including Yellow Perch, may not be used as bait except as authorized below under Dead Bait.
- Possession of live fish or use of live fish as bait is prohibited in the Western Fishing District.
- It is unlawful to release live bait of any kind into Montana waters; do not empty any live bait containers at your fishing site.
- Non-game fish except Sculpins (genus *Cottus*), Carp, Goldfish and Rainbow Smelt may be taken for use as dead bait in the following manner:
 - with hook and line; or
 - with seines no larger than 12 feet by 4 feet; or
 - with minnow traps (the dimensions shall not exceed 24 inches x 12 inches x 12 inches); or
 - with cast nets (maximum 6-foot radius) and dip nets (no larger than 3 feet x 3 feet).
- See Commercial Fishing License requirements for information on commercial harvest permits.
- All unattended fishing devices (Crayfish traps, Minnow traps, fish traps, setlines, etc.) must have the angler's name and phone number or name and ALS# attached.

Dead Bait

- Non-game fish that are freshly killed or have been preserved by freezing, salting or pickling may be used whole or in pieces as bait on all waters not restricted to artificial lures only. Sculpins (genus *Cottus*) may not be used as bait, live or dead, in the Western Fishing District.
- Whole game fish may not be used as bait.
- Parts/pieces of Bass, Burbot (Ling), Black Crappie, Northern Pike, or Yellow Perch may be used as bait if edible portions are not wasted.
- The eggs of Char, Cisco, Arctic Grayling, Salmon or Trout may be used as bait. Other parts/pieces of Salmonids may not be used as bait.

Live Bait

- Live bait fish may not be imported into Montana without authorization from FWP.
- Live animals such as meal worms, red worms, night crawlers, leeches, maggots, crayfish, reptiles, amphibians and insects may be used as bait on all waters not restricted to artificial lures only.
- Leeches may only be imported into Montana from FWP-approved leech dealers. Anglers who import leeches must have in their possession a bill-of-sale (a receipt) from the approved out-of-state leech dealer when fishing with leeches in Montana. A list of approved out-of-state leech dealers may be obtained from FWP by calling 406-452-6181.
- No fish species may be used as live bait in the Western Fishing District.

General Regulations

Possession limit means the number of fish that you may possess at any time in any form: fresh, stored in freezers or lockers, salted, smoked, dried, canned or otherwise preserved. It is unlawful to preserve fish (salted, smoked, dried, canned, or otherwise preserved) before taking them to your permanent residence (the physical abode or structure you maintain as your principal, legal residence) unless those fish can be counted. Mobile recreational vehicles, travel trailers, tents or storage/freezer lockers do not qualify as permanent residences. No person may sell or take for the purpose of sale any fish except as authorized in commercial fishing regulations.

Daily limit means the number of fish you may legally take during a calendar day. It is unlawful to exceed the standard daily limit unless the regulations for the water body where you are fishing specify a different limit. "Legally taken" means fish caught and not immediately released alive. Where catch-and-release is allowed, fish immediately released alive are considered not taken. A fish when landed and not immediately released becomes part of the daily limit of the person originally hooking the fish, even if the fish is donated to another person. If you receive fish from another angler, those fish also become part of your daily limit. You may possess the daily limit allowed only for the body of water on which you are fishing.

Handling and Transporting Legally Taken Fish

While a person is fishing, or while on the water or on the ice:

- All fish in possession must be visibly identifiable to species.
- All fish in possession must be whole with head, skin, fins and tail attached. Gills and entrails may be removed (see Disposal of Dead Fish and Fish Entrails on page 16).
- This doesn't prohibit the consumption of fish on the ice or water. However, the fish consumed are part of your daily limit.

Once off the water or ice, fish may be dressed and filleted for transport to your permanent residence, unless size limits apply, under the following conditions:

- All fish can be counted and identified. Two fillets will be counted as one fish. If the catch is frozen prior to transport, each fish or fillet must be packaged so it can be counted.
- Salmonids (Trout, Salmon, Arctic Grayling, Char and Whitefish): the entire skin must be attached to the fillet for identification.

General Fishing Seasons and Hours

Fishing Hours

- Fishing is allowed at all hours during open fishing seasons unless otherwise specified in District Exceptions to Standard Regulations.

Fishing Season: Rivers and Streams

- Open third Saturday in May through November 30 unless otherwise specified in District Exceptions to Standard Regulations.

Fishing Season: Lakes and Reservoirs

- Open entire year unless otherwise specified in District Exceptions to Standard Regulations.

Western District Standard Daily and Possession Limits

Each angler may take all of the limits listed in the chart, unless otherwise noted in the Western District Exceptions. For species not listed, there are no limits on the number of fish that may be taken or possessed. Check for exceptions to the standard regulations in the following pages.

Anglers who move from one fishing water to another may possess the limit of fish allowed only for the water on which they are currently fishing.

	Species	Daily and Possession Limits
T R O U T	Brook Trout	20 daily and in possession.
	Bull Trout	All waters are closed to angling for Bull Trout and all fish must be immediately released unless otherwise authorized in the Western District Exceptions. See Special License Requirements on page 13. Note: Federal rules prohibit the attempted take of Bull Trout unless specifically authorized by state or tribal regulation.
	Combined Trout includes Brown Trout, Rainbow Trout, Golden Trout and Arctic Grayling	Lakes/Reservoirs: 5 daily and 10 in possession, only 1 over 22 inches daily and in possession. Rivers/Streams: 5 daily and in possession, only 1 over 14 inches.
	Cutthroat Trout (see page 96 for id key)	Lakes/Reservoirs: 3 daily and in possession, no size limit. Rivers/Streams: 3 daily and in possession, none over 12 inches.
	Lake Trout	20 daily and 40 in possession.
	Largemouth Bass	<i>5 daily and in possession only 1 greater than 12 inches.</i> Third Saturday in May through June 30: 1 daily and in possession, must be over 22 inches.
	Smallmouth Bass	<i>15 daily and in possession, no size limit all year</i>
	Burbot (ling)	2 daily and in possession.
	Kokanee Salmon	20 daily and 40 in possession.
	Northern Pike	15 daily and in possession.
	Sturgeon	0 - All waters are closed to angling for Sturgeon. Captured Sturgeon must be released immediately.
	Whitefish	20 daily and 40 in possession.

2020 GENERAL FISHING SEASON

	Rivers and Streams	Lakes and Reservoirs
Western District	Open third Saturday in May through November 30, unless otherwise specified in Exceptions to Standard Regulations.	Open all year

If you don't find the water you are looking for listed in the district exceptions, use the standard regulations for the district you are fishing in.

Western District Exceptions To Standard Regulations

Check the following list of waters for the body of water you intend to fish in the Western District. If the body of water is not found in the listing of Exceptions, all of the Western District standard seasons, daily/possession limits, and standard regulations apply. Standard regulations apply for species not listed in the Exceptions.

Waterbody/Section	Exceptions to Standard Regulations
-------------------	------------------------------------

ALICE CREEK (tributary to Blackfoot River) -----

- Catch-and-release for Cutthroat Trout.
- Combined trout: 3 daily and in possession, only 1 Rainbow Trout over 14 inches, any size Brown Trout.

ANACONDA SETTling POND SYSTEM -----

- See Warm Springs Wildlife Management Area.

ASHLEY LAKE -----

Entire lake

- Salmon: 35 daily and 70 in possession.

Inlet tributaries

- Closed entire year.

BEAR CREEK (tributary to Middle Fork Flathead River) -----

- Angling is closed within 150-yard radius of the stream mouth June 1 through September 30.

BEAVER CREEK (tributary to Blackfoot River) -----

- Catch-and-release for Cutthroat Trout.
- Combined trout: 3 daily and in possession, only 1 Rainbow Trout over 14 inches, any size Brown Trout.

BELMONT CREEK (tributary to Blackfoot River) -----

- Catch-and-release for Cutthroat Trout.
- Combined trout: 3 daily and in possession, only 1 Rainbow Trout over 14 inches, any size Brown Trout.
- Artificial lures only within 100-yard radius of mouth.

BIG CREEK AND TRIBUTARIES (tributary to North Fork Flathead River) --

- Closed entire year.

Mouth of Big Creek

- Angling is closed within 150-yard radius of the stream mouth June 1 through September 30 unless posted at a greater distance.

If you don't find the water you are looking for, use the Standard Daily & Possession Limits on p 24.

Waterbody/Section	Exceptions to Standard Regulations
BITTERROOT LAKE (see Little Bitterroot Lake)	-----
BITTERROOT RIVER (note: river flows south to north)	-----

Fishing Regulations

The ENTIRE Bitterroot River to include the East Fork (downstream from Star Falls) and the West Fork (downstream from Painted Rocks Dam) to the mouth of the river near Missoula. During the Extended Season (December 1 to the third Saturday in May)

- Extended season for Northern Pike and Whitefish and catch-and-release for all trout open December 1 to third Saturday in May.
- Artificial lures, maggots and/or aquatic insects only. All other live/dead bait prohibited.

West Fork Bitterroot River downstream from Painted Rocks Dam. During General Season (third Saturday in May through November 30).

- Catch-and-release for Cutthroat Trout and Rainbow Trout.
- Brown Trout: 3 daily and in possession.

East Fork Bitterroot River downstream from Star Falls. During General Season (third Saturday in May through November 30).

- Catch-and-release for Cutthroat Trout and Rainbow Trout.
- Brown Trout: 3 daily and in possession.

Bitterroot River from confluence of East and West Forks to the north boundary of the Woodside Bridge FAS. During General Season (third Saturday in May through November 30).

- Catch-and-release for Cutthroat Trout.
- Combined trout: 3 Rainbow or Brown Trout daily and in possession, only 1 over 14 inches.

North Boundary of Woodside Bridge FAS to Florence Bridge. During General Season (third Saturday in May through November 30).

- Catch-and-release for all Trout.
- Artificial lures only.
- Live/dead bait prohibited.

Florence Bridge to mouth of Bitterroot River. During General Season (third Saturday in May through November 30).

- Catch-and-release for Cutthroat Trout.
- Combined trout: 3 Rainbow or Brown Trout daily and in possession, only 1 over 14 inches.

Ditches, canals and sloughs between US 93 and east side highway, and between Hamilton and the Florence Bridge

- Regulations are the same as the adjacent river section.

Recreation Rules (see fwp.mt.gov/recreation/permits/floating/ and signs on site for more information)

West Fork Bitterroot River and upper Bitterroot River

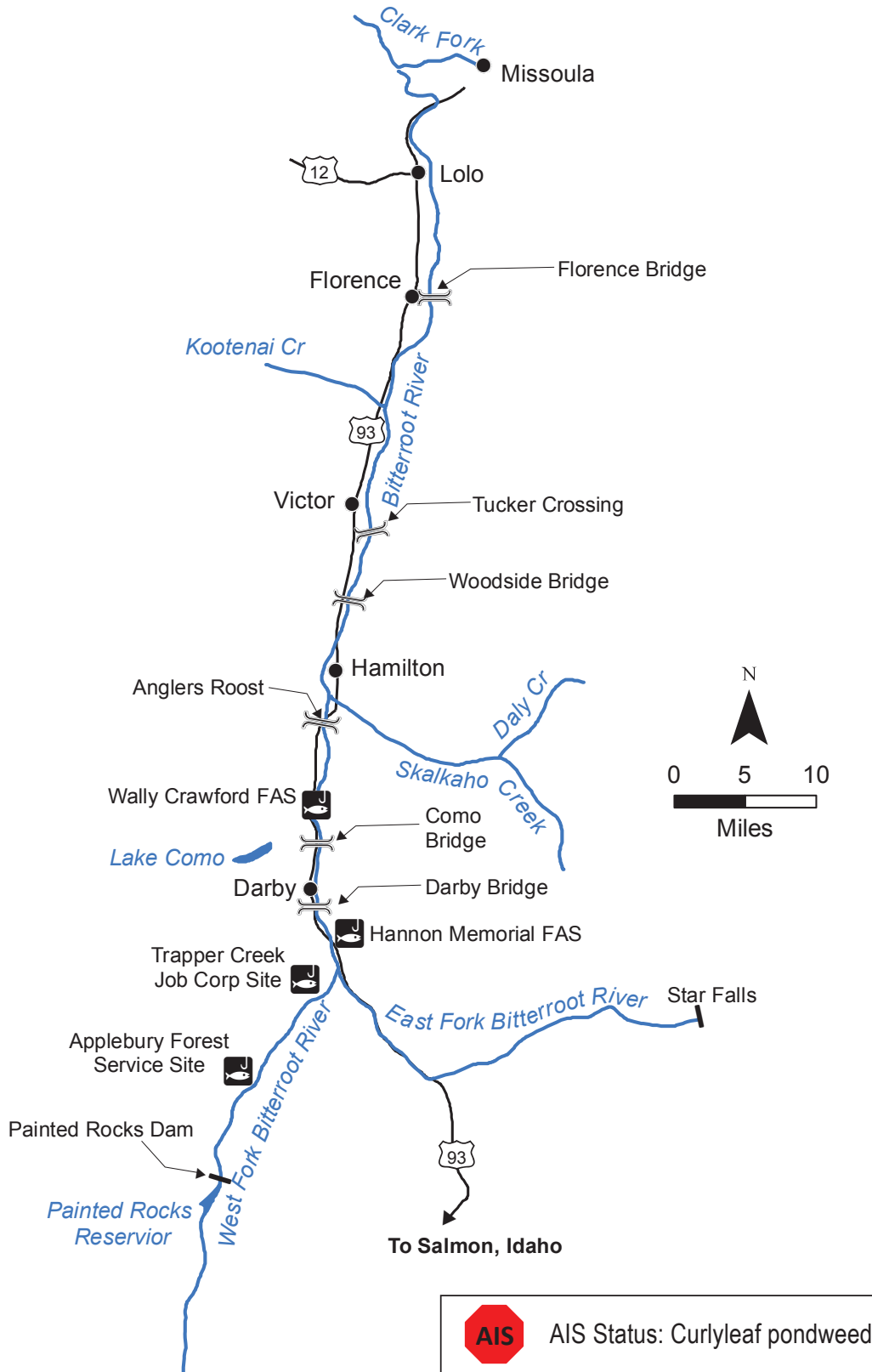
No commercial floating or fishing June 1 to September 15 from:

- Painted Rocks Dam to Applebury Forest Service Site on Fridays.
- Applebury Forest Service Site to Trapper Creek Job Corps site on Saturdays.
- Trapper Creek Job Corps site on to Hannon Memorial FAS on Sundays.
- Hannon Memorial FAS to Wally Crawford FAS on Mondays.

No floating of any kind July 1 to September 15 from:

- Painted Rocks Dam to Applebury Forest Service Site on Fridays.

Bitterroot River



If you don't find the water you are looking for, use the Standard Daily & Possession Limits on p 24.

Note: The Bitterroot River flows from south to north; downstream is to the north.

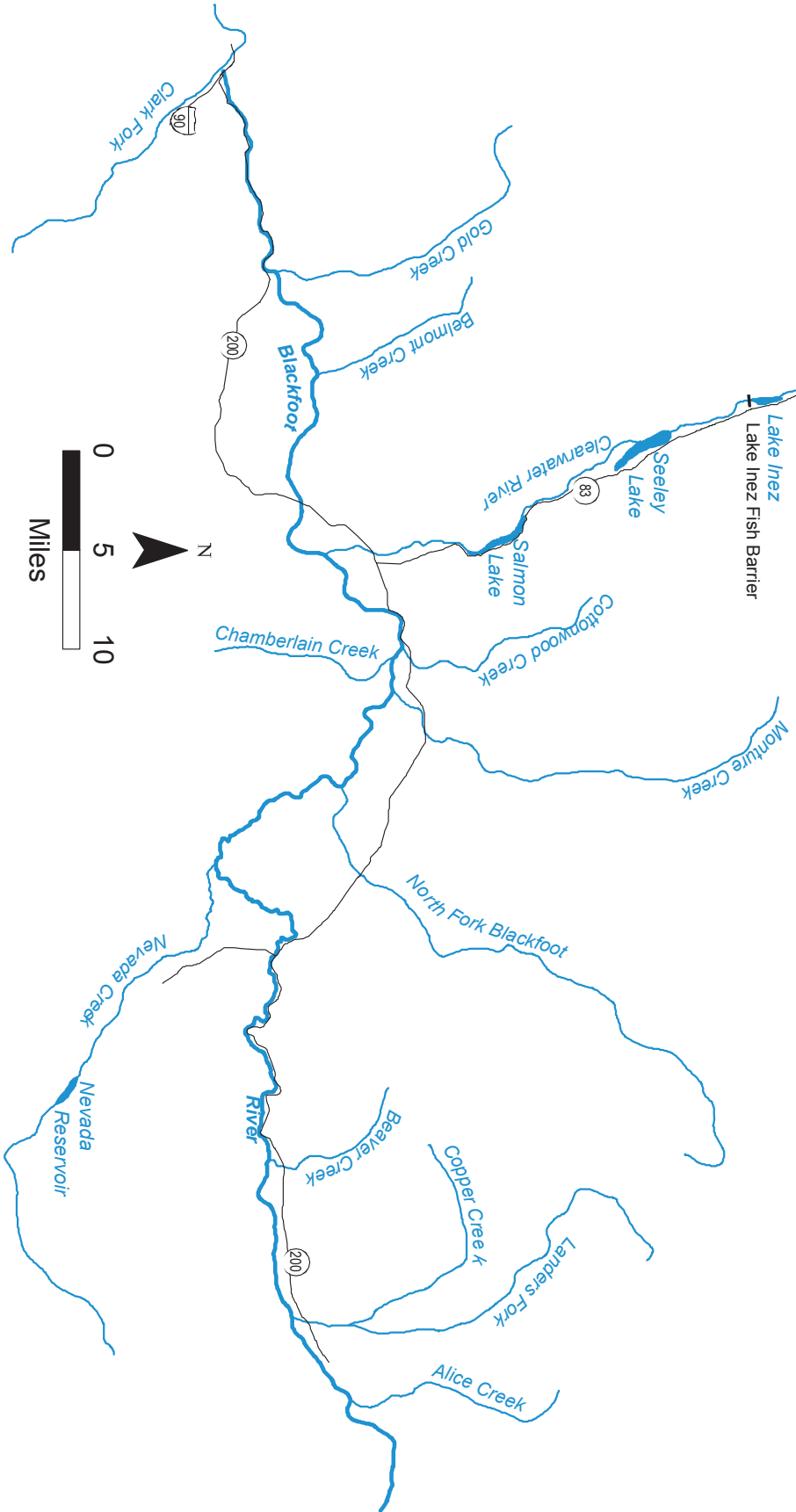
If you don't find the water you are looking for, use the Standard Daily & Possession Limits on p 24.

Waterbody/Section	Exceptions to Standard Regulations
BLACKFOOT RIVER AND TRIBUTARIES -----	
Mainstem and all tributaries except the Clearwater River. During the General Season (third Saturday in May through Nov 30)	
<ul style="list-style-type: none"> • Catch-and-release for Cutthroat Trout. • Combined trout: 3 daily and in possession, only 1 Rainbow Trout over 14 inches long, any size Brown Trout. (See Clearwater River Drainage for exception.) • Artificial lures only within 100-yard radius of the mouths of Belmont Creek, Copper Creek, Gold Creek, Monture Creek and North Fork Blackfoot River. 	
Mainstem only during the Extended Season (Dec 1 to the third Saturday in May)	
<ul style="list-style-type: none"> • Extended season for Mountain Whitefish and catch-and-release for trout open December 1 to third Saturday in May. Tributaries are closed to fishing during the extended season. • Artificial lures and/or maggots only. • All other live/dead bait prohibited. 	
Mainstem from Landers Fork mouth downstream to the confluence with the Clark Fork River	
<ul style="list-style-type: none"> • Catch-and-release for Brook Trout. (This regulation is a result of Bull Trout being misidentified and harvested as Brook Trout. Brook Trout are very rare in this section of river whereas Bull Trout are common.) 	
BLANCHARD LAKE (near Whitefish) -----	
<ul style="list-style-type: none"> • Northern Pike: 5 daily and in possession, 4 less than 28 inches and 1 greater than 36 inches. • Bass: 1 daily and in possession, must be over 22 inches. 	
BOOTJACK LAKE (near Whitefish) -----	
<ul style="list-style-type: none"> • Open April 1 through November 30. • Combined trout: 1 daily and in possession, 22-inch minimum. • Artificial lures only. 	
BUFFALOHEAD POND -----	
<ul style="list-style-type: none"> • Catch-and-release for trout, except anglers 14 years of age or younger may take 5 trout daily, 10 in possession. 	
BULL LAKE (near Troy) -----	
<ul style="list-style-type: none"> • Northern Pike: no limit. • Spearing: open for Northern Pike through the ice only. 	
CABINET GORGE RESERVOIR -----	
<ul style="list-style-type: none"> • (See Clark Fork River Mouth of Thompson River to Idaho Border) 	
CEDAR CREEK (tributary to Clark Fork River) -----	
<ul style="list-style-type: none"> • Artificial lures only, including within a 100-yard radius of the mouth. 	
CHAMBERLAIN CREEK (tributary to Blackfoot River) -----	
<ul style="list-style-type: none"> • Catch-and-release for Cutthroat Trout. • Combined trout: 3 daily and in possession, only 1 Rainbow Trout over 14 inches, any size Brown Trout. 	
CHURCH SLOUGH -----	
<ul style="list-style-type: none"> • Open entire year. • Combined trout: 5 daily and in possession, only 1 over 22 inches. • Catch-and-release for Cutthroat Trout. • Hook and Line: 2 rods and/or lines with up to 2 hooks per line all year. 	
CIBID LAKE -----	
<ul style="list-style-type: none"> • Combined trout: 4 under 12 inches and only 1 over 22 inches daily and in possession. 	

If you don't find the water you are looking for, use the Standard Daily & Possession Limits on p 24.

Blackfoot River

Waterbody/Section Exceptions to Standard Regulations



If you don't find the water you are looking for, use the Standard Daily & Possession Limits on p 24.

Waterbody/Section	Exceptions to Standard Regulations
CLARK FORK RIVER 	-----

Upstream from Perkins Lane Bridge, near Warm Springs

- Open entire year.
- Catch-and-release only.
- Artificial lures only.
- Closed to fishing from boats/vessels.

Perkins Lane Bridge, near Warm Springs, to mouth of the Flathead River

During the General Season (third Saturday in May through Nov 30):

- Catch-and-release for Cutthroat Trout.
- Northern Pike: no Limit.
- Combined trout: 3 daily and in possession, only 1 over 14 inches long,
- Artificial lures only within a 100-yard radius of the mouths of Rattlesnake Creek, Petty Creek, Fish Creek, Cedar Creek, Dry Creek, Trout Creek and St. Regis River.

During the Extended Season (Dec 1 to the third Saturday in May):

- Extended season for Northern Pike and Whitefish and catch-and-release for trout open December 1 to third Saturday in May.
- Artificial lures and/or maggots only.
- All other live/dead bait prohibited.

Mouth of Flathead River to mouth of Thompson River

- Open entire year.
- Catch-and-release for Cutthroat Trout.
- **Bass: open entire year, 5 daily and in possession, no size limit.**

Mouth of Thompson River to Idaho Border (includes Thompson Falls, Noxon Rapids, and Cabinet Gorge Reservoirs)

- Open entire year.
- Combined trout: **Standard lake daily and possession limits apply.**
- **Catch-and-release** for Cutthroat Trout.
- **Bass: 5 daily and in possession; except June 15 through July 15 only 1 daily and in possession, 22 inch minimum.**
- **Walleye: no limit.**
- Hook and Line: 2 lines with up to 2 hooks per line all year.

CLEARWATER RIVER AND TRIBUTARIES (lakes not included, see exceptions for individual lakes elsewhere) -----

Clearwater River upstream from the Salmon Lake inlet and all tributaries of the Clearwater River except the West Fork and Marshall Creek

- Closed to fishing from Rainey Lake fish barrier downstream for 100 yards.
- Catch-and-release for Cutthroat Trout.
- Northern Pike: no limit, open to spearing.
- Snagging: open for Kokanee Salmon from Lake Alva outlet to Lake Inez inlet and from Lake Inez outlet to Seeley Lake inlet from September 15 through November 30. Closed to snagging from Seeley Lake outlet to Salmon Lake inlet.

NOTE: Clearwater River sections between lakes are closed to fishing from Dec. 1 until the third Saturday in May. This includes the Clearwater River section from outlet of Seeley Lake at Riverview Drive Bridge (“Dogtown”) downstream to inlet of Salmon Lake.

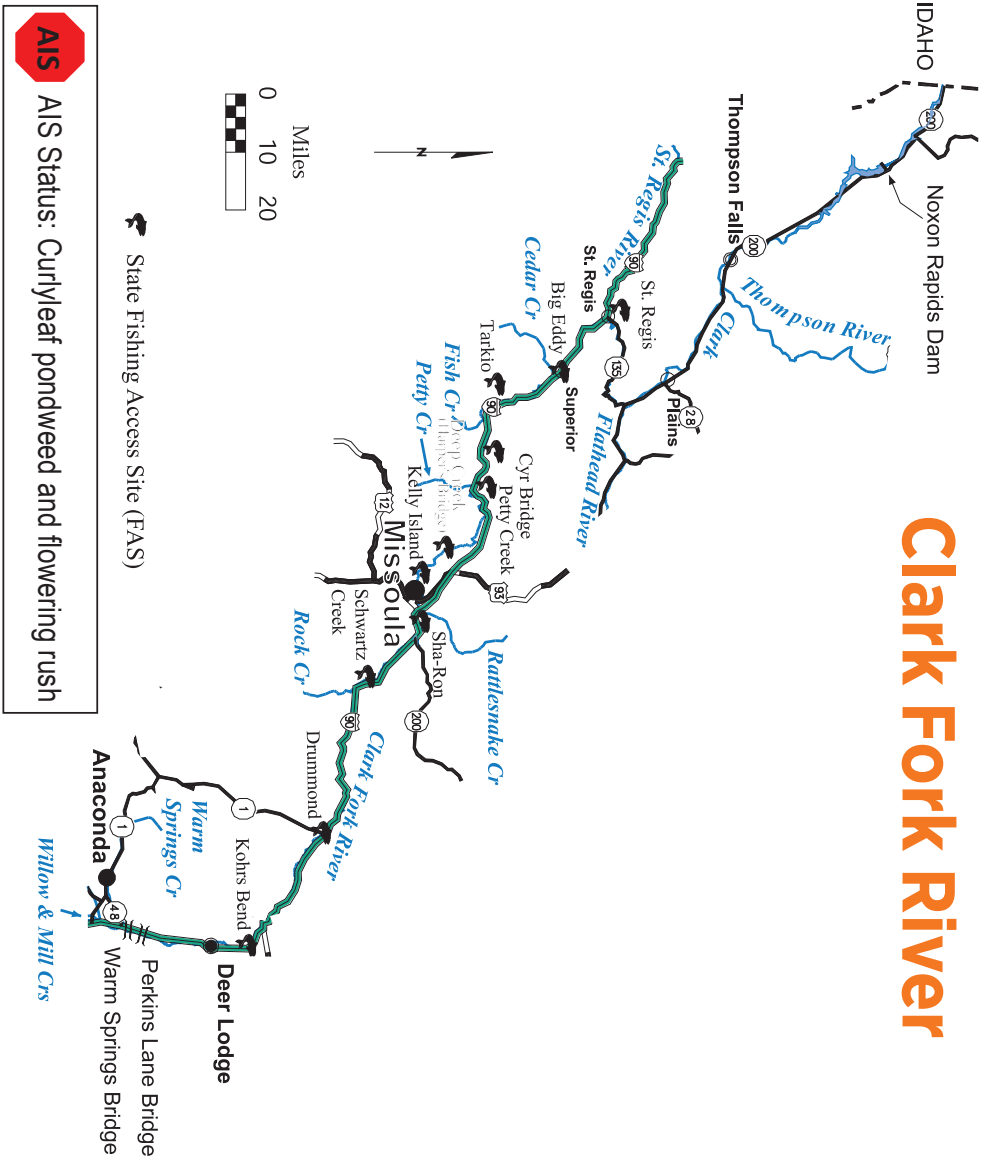
Clearwater River from Salmon Lake outlet to mouth of the Clearwater River, including Blanchard Lake and Elbow Lake

- Open entire year.
- Catch-and-release for Cutthroat Trout.
- Combined Trout: 3 daily and in possession, only 1 Rainbow Trout over 14 inches.
- Northern Pike: no limit, open to spearing.

If you don't find the water you are looking for, use the Standard Daily & Possession Limits on p 24.

Clark Fork River

Waterbody/Section Exceptions to Standard Regulations



COAL CREEK AND TRIBUTARIES (tributary to North Fork Flathead River)

- Closed entire year.

COPPER CREEK (tributary to Blackfoot River)

- Catch-and-release for Cutthroat Trout.
- Combined trout: 3 daily and in possession, only 1 Rainbow Trout over 14 inches, any size Brown Trout.
- Artificial lures only, including within a 100-yard radius of the mouth.

COTTONWOOD CREEK (tributary to Blackfoot River)

- Catch-and-release for Cutthroat Trout.
- Combined trout: 3 daily and in possession, only 1 Rainbow Trout over 14 inches, any size Brown Trout.

DALY CREEK (tributary to Skalkaho Creek)

- Catch-and-release for Cutthroat Trout.

DRY CREEK (tributary to Clark Fork River)

- Artificial lures only within 100-yard radius of the mouth.

If you don't find the water you are looking for, use the Standard Daily & Possession Limits on p 24.

Waterbody/Section	Exceptions to Standard Regulations
DRY BRIDGE POND -----	<ul style="list-style-type: none"> Catch-and-release for trout, except anglers 14 years of age and younger may take 1 trout daily and in possession.
DUNHAM CREEK (tributary to Monture Creek, Blackfoot drainage) -----	<ul style="list-style-type: none"> Catch-and-release for Cutthroat Trout. Combined trout: 3 daily and in possession, only 1 Rainbow Trout over 14 inches, any size Brown Trout. Artificial lures only.
EAST FORK BITTERROOT RIVER DOWNSTREAM FROM STAR FALLS -----	<ul style="list-style-type: none"> Catch-and-release for Rainbow Trout and Cutthroat Trout. Brown Trout: 3 daily and in possession. Extended season for Northern Pike and Whitefish and catch-and-release for trout open December 1 to third Saturday in May with aquatic insects, maggots and/or artificial lures only.
EAST FORK RESERVOIR -----	<ul style="list-style-type: none"> <i>Cutthroat Trout: 2 fish daily and in possession, only 1 over 14 inches.</i>
ECHO LAKE (near Anaconda) -----	<ul style="list-style-type: none"> Open third Saturday in May through March 31. Combined trout: 5 daily and in possession, includes Brook Trout.
ECHO LAKE (near Bigfork) -----	<ul style="list-style-type: none"> Spearing: open for Northern Pike through the ice only, daily limit of 2.
ELK CREEK (tributary to Swan River) -----	<ul style="list-style-type: none"> Closed entire year.
EMILY SPRINGS (tributary to Georgetown Lake) -----	<ul style="list-style-type: none"> Closed entire year.
EUREKA POND -----	<ul style="list-style-type: none"> Catch-and-release for trout, except anglers 14 years of age and younger may take 1 trout daily and in possession.
FENNON SLOUGH -----	<ul style="list-style-type: none"> Open entire year. Combined trout: 5 daily and in possession, only 1 over 22 inches. Catch-and-release for Cutthroat Trout. Hook and Line: 2 rods and/or lines with up to 2 hooks per line all year.
FISH CREEK AND TRIBUTARIES (Clark Fork River drainage) -----	<p>Entire drainage</p> <ul style="list-style-type: none"> Artificial lures only, including within a 100-yard radius of the mouth. <p>Mainstem downstream of the confluence of the South and West forks</p> <ul style="list-style-type: none"> Catch-and-release for Cutthroat Trout. Combined trout: 3 daily and in possession, only 1 Rainbow Trout over 14 inches, any size Brown Trout.
FISHTRAP CREEK AND TRIBUTARIES (Thompson River drainage) -----	<p>Excluding Fish Trap Lake</p> <ul style="list-style-type: none"> Combined trout: 3 daily and in possession, none over 10 inches. Artificial lures only.

Waterbody/Section **Exceptions to Standard Regulations**

FLATHEAD LAKE 

Flathead Lake north of Flathead Indian Reservation boundary

- Catch-and-release for Cutthroat Trout.
- Lake Trout: 100 daily and in possession, only 1 over 36 inches, and all fish 30 to 36 inches must be released.
- Lake Whitefish: 100 daily and in possession.
- Yellow Perch: No limit, only 10 daily over 10 inches. No possession limit.
- NOTE: A Flathead Indian Reservation Tribal Permit is required to fish on the southern portion of the lake. Check Tribal Fishing regulations for the south portion of the lake.

FLATHEAD RIVER

Mainstem Flathead and tributaries, from confluence of North and Middle Forks to Highway 2 Bridge upstream of Teakettle FAS

- **Single-pointed hooks only. No treble or double hooks. Anglers may remove treble or double hooks from the lure and replace them with a single hook, or the shanks may be cut off the other hook points to leave a single hook. Lures with multiple hook attachments may still be used but any treble hook must be replaced by a single hook.**

Flathead Indian Reservation boundary to mouth

- Open entire year.
- Bass: open entire year, 5 daily and in possession, no size limit.

Confluence of the North and Middle forks (near Blankenship Bridge) downstream to Flathead Lake

- **Open entire year.**
- **No intentional fishing for Bull Trout.**
- Catch-and-release for Cutthroat Trout.
- Northern Pike: **February 28 to third Saturday in May closed to intentional fishing for Northern Pike.**
- **Rainbow** Trout: 5 daily and in possession.
- Whitefish: 100 daily and in possession.
- **From December 1 to third Saturday in May, maggots and artificial lures only, no artificial lures can be scented (infused, saturated, or applied).**

FLATHEAD RIVER SLOUGHS

Brenneman, Church, Egan, Fennon, Half Moon, McWennegar, Mill, and Rose Creek

- Open entire year.
- **Rainbow** Trout: 5 daily and in possession.
- Catch-and-release for Cutthroat Trout.
- Hook and Line: 2 rods and/or lines with up to 2 hooks per line and **no bait restrictions** all year.

FLINT CREEK

Downstream from Georgetown Lake

- Extended season for Whitefish and catch-and-release for trout open December 1 to third Saturday in May with artificial lures and/or maggots only.

FRED BURR LAKE (Granite County)

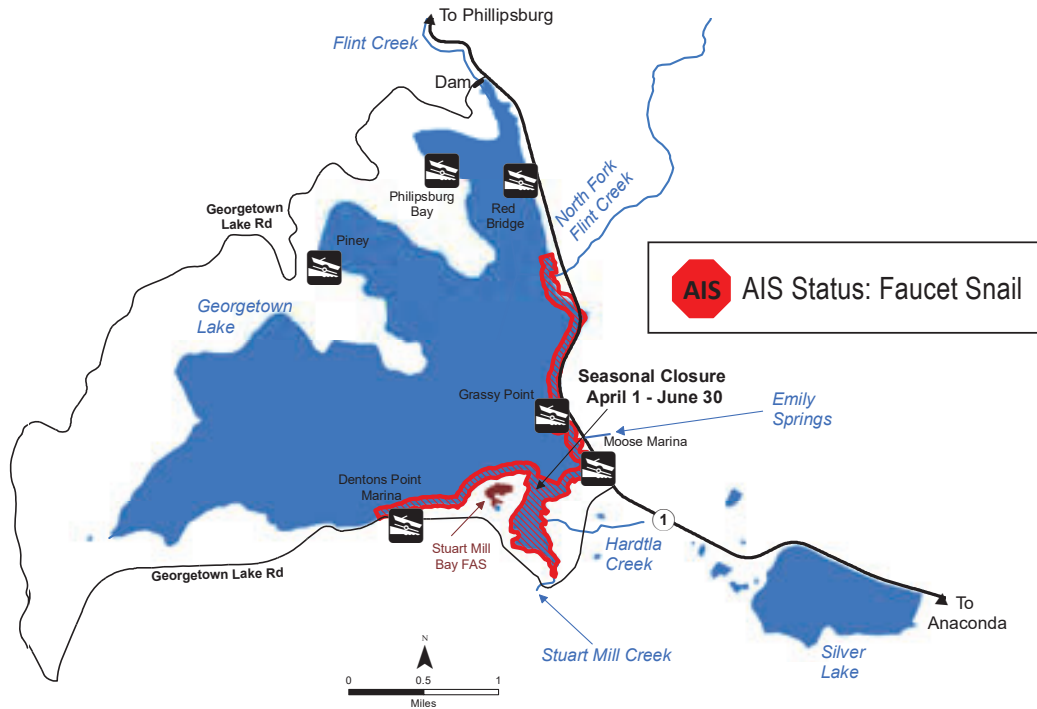
Philipsburg water supply

- Closed entire year.

FRENCHTOWN POND

- Catch-and-release for bass.

Georgetown Lake



If you don't find the water you are looking for, use the Standard Daily & Possession Limits on p 24.

GEORGETOWN LAKE

- Open third Saturday in May through March 31, except for the South and East shoreline area which is only open July 1 through March 31. South and East shoreline areas described as follows: all waters from the shore or within 100 yards of shore in the area extending from a point 200 yards west of Denton's Point Marina (along the shore, including all of Stuart Mill Bay) to a point 200 yards north from the mouth of North Fork Flint Creek.
- Combined trout, includes Brook Trout: 5 daily and in possession, of which only 1 may be a Brook Trout. Only Brook Trout over 16 inches can be kept.
- Kokanee Salmon: no daily or possession limit.

Tributaries to Georgetown Lake (Hardtla, North Fork Flint, and Stuart Mill creeks)

- Open July 1 through November 30.
- Emily Springs: closed entire year.
- Catch-and-release for Brook Trout.

GERMAN GULCH

Mainstem and tributaries

- Catch-and-release for Cutthroat Trout

GOAT CREEK (tributary to Swan River)

- Closed entire year.

GOLD CREEK (tributary to Blackfoot River)

- Catch-and-release for Cutthroat Trout.
- Combined trout: 3 daily, only 1 Rainbow Trout over 14 inches, any size Brown Trout.
- Artificial lures only, including within 100-yard radius of the mouth.



Waterbody/Section	Exceptions to Standard Regulations
GRANITE CREEK AND TRIBUTARIES (Middle Fork Flathead River drainage)	<ul style="list-style-type: none"> • Closed entire year.
GRAVE CREEK AND TRIBUTARIES (near Eureka including Clarence Creek and Blue Sky Creek) -----	
Upstream of Highway 93 bridge	<ul style="list-style-type: none"> • Open third Saturday in May through August 15.
Downstream of Highway 93 to mouth	<ul style="list-style-type: none"> • Snagging: open for Kokanee Salmon from September 15 through November 30. • Kokanee Salmon: 20 daily and 40 in possession.
HANDKERCHIEF LAKE -----	
	<ul style="list-style-type: none"> • Catch-and-release for Arctic Grayling.
HARDTLA CREEK (tributary to Georgetown Lake) -----	
	<ul style="list-style-type: none"> • Open July 1 through November 30. • Catch-and-release for Brook Trout. • Combined trout: 5 daily and in possession.
HEIRONYMOUS POND -----	
	<ul style="list-style-type: none"> • Combined trout: 3 daily and in possession, includes Cutthroat Trout and Brook Trout.
HERRIG CREEK (tributary to Little Bitterroot Lake) -----	
	<ul style="list-style-type: none"> • Closed entire year.
HOLLAND CREEK -----	
Mouth on Holland Lake upstream to the Falls	<ul style="list-style-type: none"> • Closed entire year.
HORSESHOE LAKE (near Ferndale) -----	
	<ul style="list-style-type: none"> • Catch-and-release for bass.
HORSESHOE LAKE (Thompson Chain of Lakes) -----	
	<ul style="list-style-type: none"> • Tiger Muskie : 1 daily and in possession, must be over 40 inches.
HUNGRY HORSE RESERVOIR -----	
Dam to Crossover Boat Ramp	<ul style="list-style-type: none"> • Bull Trout: 1 daily and in possession from the third Saturday in May through August 15, maximum of 2 fish per license year. Catch-and-release the rest of the year with a Hungry Horse/South Fork Flathead permit validation on fishing license. A Hungry Horse/South Fork Flathead Bull Trout Catch Card must be in possession when fishing for Bull Trout. See Special Licenses requirements for application information. All Bull Trout must be released immediately or killed and counted as your limit when harvest is allowed. It is unlawful to possess a live Bull Trout for any reason.
HUNGRY HORSE RESERVOIR TRIBUTARIES -----	
	<ul style="list-style-type: none"> • See South Fork Flathead River Drainage regulations.
JOB CORPS PONDS (Deer Lodge County) -----	
	<ul style="list-style-type: none"> - see Warm Springs WMA map on page 45 • Open August 15 through September 30. • Catch-and-release only. • Artificial lures only. • Motorized boats/vessels prohibited.
KEELER CREEK AND TRIBUTARIES -----	
	<ul style="list-style-type: none"> • Open third Saturday in May through August 15.

Waterbody/Section	Exceptions to Standard Regulations
-------------------	------------------------------------

KOOTENAI RIVER

- As per the District Standard Regulations, the Kootenai River is closed to angling for Bull Trout; any Bull Trout caught must be immediately released.

Highway 37 Bridge, near Fisher River, to Idaho Border

- Open entire year.
- Closed to angling June 1 through September 30 within 150-yards upstream and downstream of the Quartz Creek stream mouth unless posted at a greater distance.
- Catch-and-release for Burbot.
- Combined trout: 4 daily and in possession, includes 3 under 13 inches and only 1 over 18 inches.

Libby Dam to Highway 37 Bridge, near Fisher River

- Open June 1 through February 28.
- Combined trout: 1 daily and in possession, 28 inch minimum length.
- Brown Trout: All Brown Trout must be killed immediately, kept, and the entire fish turned into FWP. Anglers who catch Brown Trout in the Kootenai River are required to report the catch to FWP within 24 hours (406-752-5501.) Anglers must provide their full name, ALS Number, phone number, date and time of capture, and location on the river. Anglers are required to turn in the whole Brown Trout to a FWP office during regular business hours and within 10 days of capture.

Libby Dam to Kootenai Falls

- Brown Trout: All Brown Trout must be killed immediately, kept, and the entire fish turned into FWP. Anglers who catch Brown Trout in the Kootenai River are required to report the catch to FWP within 24 hours (406-752-5501.) Anglers must provide their full name, ALS number, phone number, date and time of capture, and location on the river. Anglers are required to turn in the whole Brown Trout to a FWP office during regular business hours and within 10 days of capture.

Kootenai Falls to Idaho Border

- Brown Trout: no limit.

Kootenai Falls to 0.8 miles downstream of Swinging Bridge

- Snagging: open for Kokanee Salmon from September 15 through November 30.

LAKE ALVA

- Kokanee Salmon: 10 daily and 20 in possession.
- Northern Pike: no limit.
- Spearing: open for Northern Pike.


LAKE CREEK (near Troy)


- Open to fishing all year, except 150 yards upstream of Keeler Creek to Chase Cutoff Bridge: Closed to angling from July 15 through October 31.
- Brown Trout: no limit.
- Snagging: Downstream of Troy Dam open for Kokanee Salmon from September 15 through November 30.

LAKE INEZ

- Kokanee Salmon: 10 daily and 20 in possession.
- Northern Pike: no limit.
- Spearing: open for Northern Pike.

If you don't find the water you are looking for, use the Standard Daily & Possession Limits on p 24.

Waterbody/Section	Exceptions to Standard Regulations
LONG CREEK AND TRIBUTARIES (Middle Fork Flathead River drainage) -	<ul style="list-style-type: none"> Closed entire year.
LOON LAKE (near Ferndale) -----	<ul style="list-style-type: none"> Combined trout: 4 less than 12 inches and only 1 over 22 inches daily and in possession.
LOST LAKE (Eureka) -----	<ul style="list-style-type: none"> Open April 1 through November 30. Combined trout: 1 daily and in possession, 22-inch minimum. Artificial lures only.
LOWER STILLWATER LAKE  -----	<ul style="list-style-type: none"> Yellow Perch: no limit, only 10 daily over 10 inches. No possession limit. Spearing: open for Northern Pike through the ice only.
LOWER THOMPSON LAKE -----	<ul style="list-style-type: none"> Salmon: 10 daily and 20 in possession. Spearing: open for Northern Pike through the ice only. Walleye: All Walleye caught must be killed immediately, kept and the entire fish turned in to FWP. Anglers who catch Walleye in Lower Thompson Lake, Middle Thompson Lake, and Upper Thompson Lake are required to report the catch to FWP within 24 hours (406-752-5501). Anglers must provide their full name, ALS Number, phone number, date and time of capture, and location on lake. Anglers are required to turn in the whole Walleye to a FWP office within 10 days of capture during regular business hours.
MARSHALL CREEK (tributary to West Fork Clearwater River) -----	<ul style="list-style-type: none"> Artificial lures only.
MCCORMICK POND aka Silver's Lagoon (Missoula) -----	<ul style="list-style-type: none"> Open to fishing for anglers 14 years of age or younger. Open April 1 through October 30. Combined trout, including Cutthroat Trout: 1 fish daily and in possession.
MEDICINE LAKE AND TRIBUTARIES (near Philipsburg) -----	
Lake	<ul style="list-style-type: none"> Open July 1 through April 30.
Tributaries to lake	<ul style="list-style-type: none"> Open July 1 through November 30.
MIDDLE FORK FLATHEAD RIVER -----	
Mainstem and tributaries including headwaters to confluence with North Fork Flathead River (near Blankenship Bridge)	<ul style="list-style-type: none"> Single-pointed hooks only. No treble or double hooks. Anglers may remove treble or double hooks from the lure and replace them with a single hook, or the shanks may be cut off the other hook points to leave a single hook. Lures with multiple hook attachments may still be used but any treble hook must be replaced by a single hook.
Non-wilderness portion	<p>NOTE: Montana/Glacier National Park boundary is the ordinary high water mark on the park side of the river.</p> <ul style="list-style-type: none"> Closed to angling June 1 through September 30 within a 150-yard radius of the Bear Creek stream mouth. Catch-and-release for Cutthroat Trout. Rainbow Trout: 5 daily and in possession. Extended season open December 1 to third Saturday in May with artificial lures and/or maggots only.

Waterbody/Section	Exceptions to Standard Regulations
NORTH FORK FLATHEAD RIVER -----	
	Mainstem and tributaries including headwaters to confluence with Middle Fork Flathead River (near Blankenship Bridge)
	NOTE: Montana/Glacier National Park boundary is the middle of the river.
	<ul style="list-style-type: none"> • Single-pointed hooks only. No treble or double hooks. Anglers may remove treble or double hooks from the lure and replace them with a single hook, or the shanks may be cut off the other hook points to leave a single hook. Lures with multiple hook attachments may still be used but any treble hook must be replaced by a single hook. • Closed to angling June 1 through September 30 within a 150-yard radius of the Big Creek stream mouth unless posted at a greater distance. • Catch-and-release for Cutthroat Trout. • Rainbow Trout: 5 daily and in possession. • Extended season open December 1 to third Saturday in May with artificial lures and/or maggots only.
NORTH FORK FLINT CREEK (tributary to Georgetown Lake) -----	
	<ul style="list-style-type: none"> • Open July 1 through November 30. • Catch-and-release for Brook Trout. • Combined trout: 5 daily and in possession.
NOXON RAPIDS RESERVOIR  -----	
	Birdland Bay Bridge to Noxon Rapids Dam
	<ul style="list-style-type: none"> • (See Clark Fork River Mouth of Thompson River to Idaho Border)
PETTY CREEK (tributary to Clark Fork River) -----	
	<ul style="list-style-type: none"> • Combined trout: 3 daily and in possession, only 1 Rainbow Trout over 14 inches, any size Brown Trout. • Artificial lures only within 100-yard radius of the mouth.
PINE GROVE POND -----	
	<ul style="list-style-type: none"> • Catch-and-release for trout, except anglers 14 years of age or younger may take 1 trout daily and in possession.
PLACID CREEK (tributary to Placid Lake) -----	
	<ul style="list-style-type: none"> • Kokanee Salmon: 5 daily and 10 in possession. • Spearing: open for Northern Pike. • Snagging: open for Kokanee Salmon October 15 through December 31; 20 daily and 40 in possession.
PLACID LAKE -----	
	<ul style="list-style-type: none"> • Catch-and-release for bass. • Kokanee Salmon: 10 daily and 20 in possession. • Snagging: open for Kokanee Salmon October 15 through December 31; 20 daily and 40 in possession.
QUARTZ CREEK AND TRIBUTARIES (Kootenai River drainage including West Fork) -----	
	<ul style="list-style-type: none"> • Open third Saturday in May through August 15.
RACETRACK POND -----	
	<ul style="list-style-type: none"> • Catch-and-release for trout, except anglers 14 years of age or younger may take 3 combined trout, including Cutthroat Trout, daily and in possession. • Artificial lures only, except anglers 14 years of age or younger may use bait.
RATTLESNAKE CREEK AND TRIBUTARIES (near Missoula) -----	
	Entire river
	<ul style="list-style-type: none"> • Catch-and-release for Cutthroat Trout.



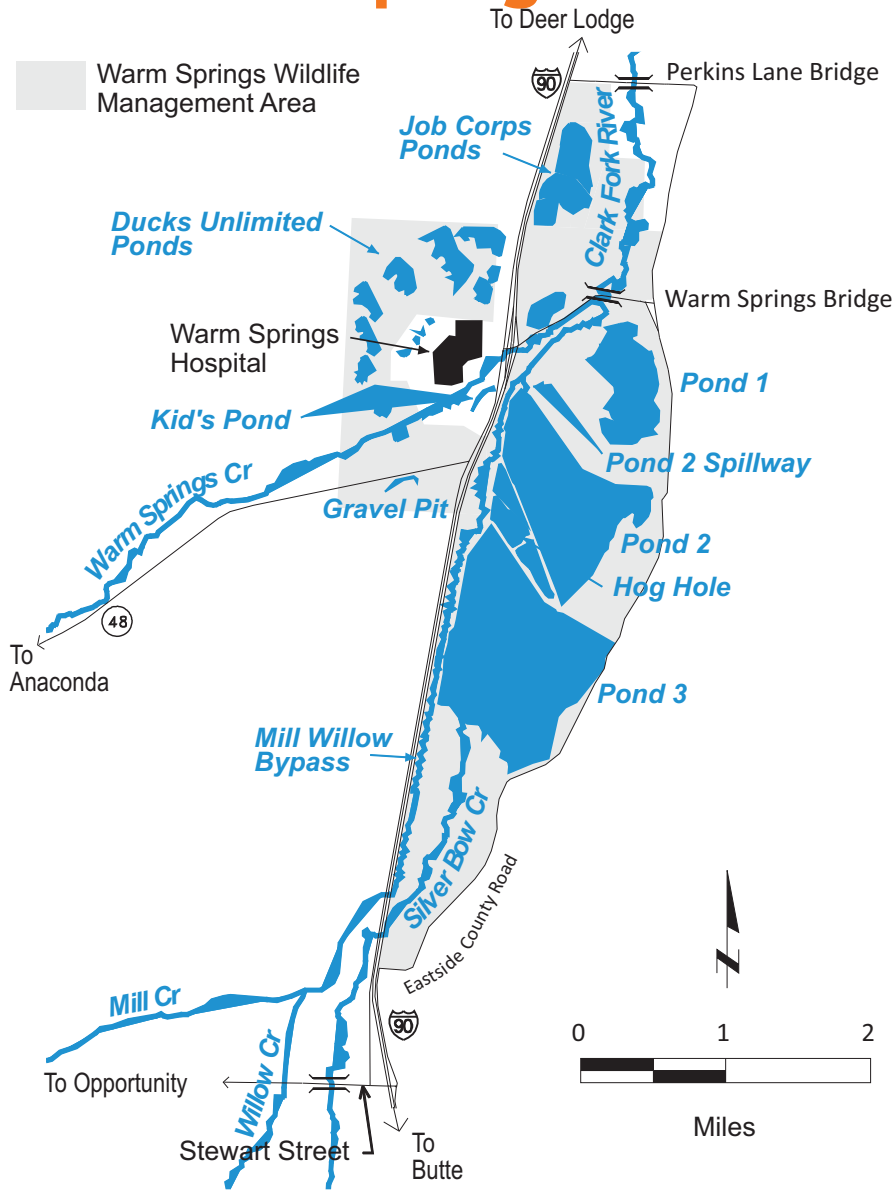
If you don't find the water you are looking for, use the Standard Daily & Possession Limits on p 24.

Waterbody/Section	Exceptions to Standard Regulations
SKALKAHO CREEK (tributary to Bitterroot River) -----	<ul style="list-style-type: none"> Catch-and-release for Cutthroat Trout, includes Daly Creek.
SKYLINE POND (in Butte) -----	<ul style="list-style-type: none"> Open to fishing for anglers 14 years of age or younger. One rod per child. 1 trout daily and in possession.
SMITH LAKE (near Kalispell) -----	<ul style="list-style-type: none"> Yellow Perch: No limit, only 10 daily over 10 inches. No possession limit. Northern Pike: 50 daily and 100 in possession
SOUTH FORK FLATHEAD RIVER -----	<p>South Fork Flathead River and tributaries, including headwaters to confluence with Flathead River (does not include Hungry Horse Reservoir)</p> <ul style="list-style-type: none"> Single-pointed hooks only. No treble or double hooks. Anglers may remove treble or double hooks from the lure and replace them with a single hook, or the shanks may be cut off the other hook points to leave a single hook. Lures with multiple hook attachments may still be used but any treble hook must be replaced by a single hook. <p>Mainstem upstream from Hungry Horse Reservoir (from Crossover Boat Ramp south and upstream to the confluence of Youngs and Danaher creeks)</p> <ul style="list-style-type: none"> Bull Trout: catch-and-release from the third Saturday in May through July 31. A Hungry Horse/South Fork Flathead Bull Trout Catch Card must be in possession when fishing for Bull Trout. See Special License requirements for application information. All Bull Trout must be released immediately. It is unlawful to possess a live Bull Trout for any reason. <p>Meadow Creek Bridge to Spotted Bear foot bridge and tributaries</p> <ul style="list-style-type: none"> Catch-and-release for Cutthroat Trout. Artificial lures only. <p>Hungry Horse Dam downstream to Devil's Elbow and tributaries</p> <ul style="list-style-type: none"> Closed entire year. <p>Devil's Elbow downstream to mouth and tributaries</p> <ul style="list-style-type: none"> Catch-and-release for Cutthroat Trout. Rainbow Trout: 5 daily and in possession. Extended season open December 1 to third Saturday in May with artificial lures and/or maggots only.
SQUEEZER CREEK (tributary to Swan River) -----	<ul style="list-style-type: none"> Closed entire year.
ST REGIS COMMUNITY PARK POND -----	<ul style="list-style-type: none"> Open to fishing for anglers 14 years of age or younger; one rod per child. Combined trout, including Cutthroat Trout: 1 fish daily and in possession.
ST REGIS RIVER -----	<ul style="list-style-type: none"> Catch-and-release for Cutthroat Trout. Combined trout: 3 daily and in possession, only 1 Rainbow Trout over 14 inches, any size Brown Trout. Artificial lures only within 100-yard radius of the mouth.
STILLWATER RIVER AND TRIBUTARIES (Flathead River drainage) -----	<ul style="list-style-type: none"> Open entire year from mouth of Sunday Creek to lower Stillwater Lake.

If you don't find the water you are looking for, use the Standard Daily & Possession Limits on p 24.

Waterbody/Section	Exceptions to Standard Regulations
TRAIL CREEK AND TRIBUTARIES (Yakinikak, N. Fork Flathead River drainage)	<ul style="list-style-type: none"> Closed entire year downstream from mouth of Thoma Creek.
TROUT CREEK (tributary to Clark Fork River) -----	<ul style="list-style-type: none"> Artificial lures only within 100-yard radius of the mouth.
TROY POND -----	<ul style="list-style-type: none"> Catch-and-release for trout, except anglers 14 years of age or younger may take 1 trout daily and in possession.
UPPER STILLWATER LAKE -----	<ul style="list-style-type: none"> Spearing: open for Northern Pike through the ice only.
UPPER THOMPSON LAKE -----	<ul style="list-style-type: none"> Kokanee Salmon: 10 daily and 20 in possession. Spearing: open for Northern Pike through the ice only. Walleye: All Walleye caught must be killed immediately, kept and the entire fish turned in to FWP. Anglers who catch Walleye in Lower Thompson Lake, Middle Thompson Lake, and Upper Thompson Lake are required to report the catch to FWP within 24 hours (406-752-5501). Anglers must provide their full name, ALS Number, phone number, date and time of capture, and location on lake. Anglers are required to turn in the whole Walleye to a FWP office within 10 days of capture during regular business hours.
UPSATA LAKE -----	<ul style="list-style-type: none"> Catch-and-release for bass. Northern Pike: no limit. Spearing: open for Northern Pike.
WARM SPRINGS CREEK (near Anaconda) -----	
Upstream of Myers Dam	<ul style="list-style-type: none"> Open from the third Saturday in May through November 30.
Myers Dam to Warm Springs Wildlife Management Area (WMA)	<ul style="list-style-type: none"> Open from the third Saturday in May through November 30 except for the section from Myers Dam downstream 50 yards which is closed to fishing July 1 through September 30. Extended season: catch-and-release for trout December 1 to third Saturday in May with artificial lures only.
Warm Springs Wildlife Management Area (WMA)	<ul style="list-style-type: none"> Open entire year on Warm Springs Wildlife Management Area (WMA). See Warm Springs WMA for additional regulations.
WARM SPRINGS WILDLIFE MANAGEMENT AREA (WMA) -----	
All waters	<ul style="list-style-type: none"> All ponds and canals open August 15 through September 30 including Job Corps Ponds and Ducks Unlimited Ponds. Catch-and-release only. See Kid's Pond and Gravel Pit Pond for exceptions. Artificial lures only. See Kid's Pond and Gravel Pit Pond for exceptions. Motorized boats/vessels prohibited.
Job Corps Ponds (Deer Lodge County)	<ul style="list-style-type: none"> Open August 15 through September 30. Catch-and-release only. Artificial lures only. Motorized boats/vessels prohibited.
Kids pond at WSWMA headquarters	<ul style="list-style-type: none"> Open entire year.

Warm Springs WMA



If you don't find the water you are looking for, use the Standard Daily & Possession Limits on p. 24.

- Combined trout: 2 daily and in possession.
- Bait may be used.
- Open to fishing by anglers 14 years of age or younger only. One rod per child.

Gravel Pit Pond adjacent to Highway 48

- **Open second Friday in June at 5 p.m. through November 30.**
- Combined trout: 2 daily and in possession.
- Bait may be used.

Hog Hole

- Open May 25 through September 30. No trespassing on islands.

Pond 3

- Open May 25 through November 30 to fishing from non-motorized vessels.

Mill-Willow Bypass, Warm Springs Creek and Clark Fork River

- Open entire year.
- Closed to fishing from boats/vessels.

If you don't find the water you are looking for, use the Standard Daily & Possession Limits on p 24.

Waterbody/Section	Exceptions to Standard Regulations
-------------------	------------------------------------

WEST FORK BITTERROOT RIVER DOWNSTREAM OF PAINTED ROCKS DAM

Fishing Regulations

- Catch-and-release for Cutthroat Trout and Rainbow Trout.
- Brown Trout: 3 daily and in possession.
- Extended season for Northern Pike and Whitefish and catch-and-release for trout from December 1 to third Saturday in May with aquatic insects, maggots and/or artificial lures only.

Recreation Rules (see fwp.mt.gov/recreation/permits/floating/ and signs on site for more information)

West Fork Bitterroot River and upper Bitterroot River (see map page 27)

No commercial floating or fishing June 1 to September 15 from:

- Painted Rocks Dam to Applebury Forest Service Site on Fridays.
- Applebury Forest Service Site to Trapper Creek Job Corps site on Saturdays.
- Trapper Creek Job Corps site on to Hannon Memorial FAS on Sundays.
- Hannon Memorial FAS to Wally Crawford FAS on Mondays.

No floating of any kind July 1 to September 15 from:

- Painted Rocks Dam to Applebury Forest Service Site on Fridays.

WEST FORK CLEARWATER RIVER AND TRIBUTARIES -----

Entire drainage

- Artificial lures only.

West Fork Clearwater River upstream of confluence with Marshall Creek

- Closed entire year.

WEST FORK THOMPSON RIVER AND TRIBUTARIES -----

- Combined trout: 3 daily and in possession, none over 10 inches.
- Artificial lures only.

WHALE CREEK AND TRIBUTARIES (North Fork Flathead River drainage)

- Closed entire year downstream from Whale Creek Falls.

WHITEFISH LAKE -----

- Lake Trout: 20 daily and in possession, only 1 over 36 inches. All fish 30 to 36 inches must be released.

WHITEFISH RIVER -----

- Open entire year from Whitefish Lake to State Highway 40 Bridge.

WILLOW CREEK (near Warm Springs) -----

From Stewart Street Bridge to the Warm Springs WMA

- Catch-and-release only.
- Artificial lures only.

WOODWARD CREEK -----

- Closed to angling within a 150-yard radius of the stream mouth June 1 through September 30, unless posted at a greater distance.