

Cover sheet for 2012 Deer, Elk and Conservation License Purchases by Age Report.

Explanation of Data.

- The pink and blue shaded columns are the raw data obtained about deer, elk and conservation license sales by age, with some extrapolation to get the total numbers of each type.
- The green shaded area breaks the youth down by age categories of 12-17, 12-14 and 15-17.
- The purple shaded area breaks down the senior by age categories of 62-80, 65-80, 67-80 and 70-80.
- The white columns just give a ratio percentage of deer, elk or neither deer or elk holders to the total number of conservation license holders. An increase in this percentage means a transition from deer and elk hunting to fishing and upland bird.
- The first graph shows the youth license sales, the second graph shows the senior license sales and the third graph shows both, side by side.

Analysis.

- Slightly more than half of the youth hunters are in the first three years, 12-14.
- Raising the minimum age for a senior discount to 65 would eliminate about 20% of the hunters from the discount.
- Raising the minimum age for a senior discount to 67 would eliminate about 50% of the hunters from the discount.
- Raising the minimum age for a senior discount to 70 would eliminate about 67% of the hunters from the discount.
- Youth hunters peak at age 13 and steadily decline through age 20. There is no big dip at 18 when the price increases. Youth sportsman license increase at 16 even though demand is going down, indicating that they are taking advantage of the price break.
- Senior participation shows a steady decline as age increases. There is a slight flattening out, but no increase of sales around age 62 when the senior discount kicks in. This indicates that the senior price does not affect the demand much. There is a shift from sportsman to individual deer and elk licenses after 62 showing hunters taking advantage of the price break.
- The percentage of hunters buying only a deer license (no elk) is fairly consistent through the age brackets. The percentage of hunters buying only an elk license (no deer) is a lot less for youths.

2012 Deer, Elk and Conservation License Purchases by Age

Age	Consv	Deer Only	Elk Only	Deer & Elk	Sportsman	Total Deer	Total Elk	D/E Ratio	Total Hunters	Non Deer or Elk
11	59	0	0	1	5	6	6	1.00	6	53
12	3,498	38	4	57	2,765	2,860	2,826	1.01	2,864	634
13	5,208	500	44	1,132	2,003	3,635	3,179	1.14	3,679	1,529
14	5,190	683	61	1,430	1,483	3,596	2,974	1.21	3,657	1,533
15	4,881	582	82	1,322	1,433	3,337	2,837	1.18	3,419	1,462
16	4,612	594	70	896	1,634	3,124	2,600	1.20	3,194	1,418
17	4,392	612	82	868	1,340	2,820	2,290	1.23	2,902	1,490
18	4,054	642	76	902	931	2,475	1,909	1.30	2,551	1,503
19	3,794	683	105	960	364	2,007	1,429	1.40	2,112	1,682
20	3,815	691	109	956	372	2,019	1,437	1.41	2,128	1,687

% 12-17

60	4,825	467	247	1,086	904	2,457	2,237	1.10	2,704	2,121
61	4,505	419	212	1,041	752	2,212	2,005	1.10	2,424	2,081
62	4,309	395	215	1,003	734	2,132	1,952	1.09	2,347	1,962
63	4,283	397	200	1,328	336	2,061	1,864	1.11	2,261	2,022
64	4,229	369	208	1,374	302	2,045	1,884	1.09	2,253	1,976
65	4,234	402	182	1,393	266	2,061	1,841	1.12	2,243	1,991
66	3,890	330	163	1,311	192	1,833	1,666	1.10	1,996	1,894
67	3,029	294	111	987	134	1,415	1,232	1.15	1,526	1,503
68	2,885	257	134	956	115	1,328	1,205	1.10	1,462	1,423
69	2,999	277	140	952	108	1,337	1,200	1.11	1,477	1,522
70	2,774	252	118	939	101	1,292	1,158	1.12	1,410	1,364
71	2,292	229	111	756	72	1,057	939	1.13	1,168	1,124
72	2,163	196	102	747	59	1,002	908	1.10	1,104	1,059
73	1,858	188	87	602	65	855	754	1.13	942	916
74	1,694	183	82	535	29	747	646	1.16	829	865
75	1,471	149	76	433	31	613	540	1.14	689	782
76	1,300	131	70	385	24	540	479	1.13	610	690
77	1,198	119	53	325	22	466	400	1.17	519	679
78	960	96	67	242	15	353	324	1.09	420	540
79	793	87	42	203	12	302	257	1.18	344	449
80	674	76	40	161	9	246	210	1.17	286	388

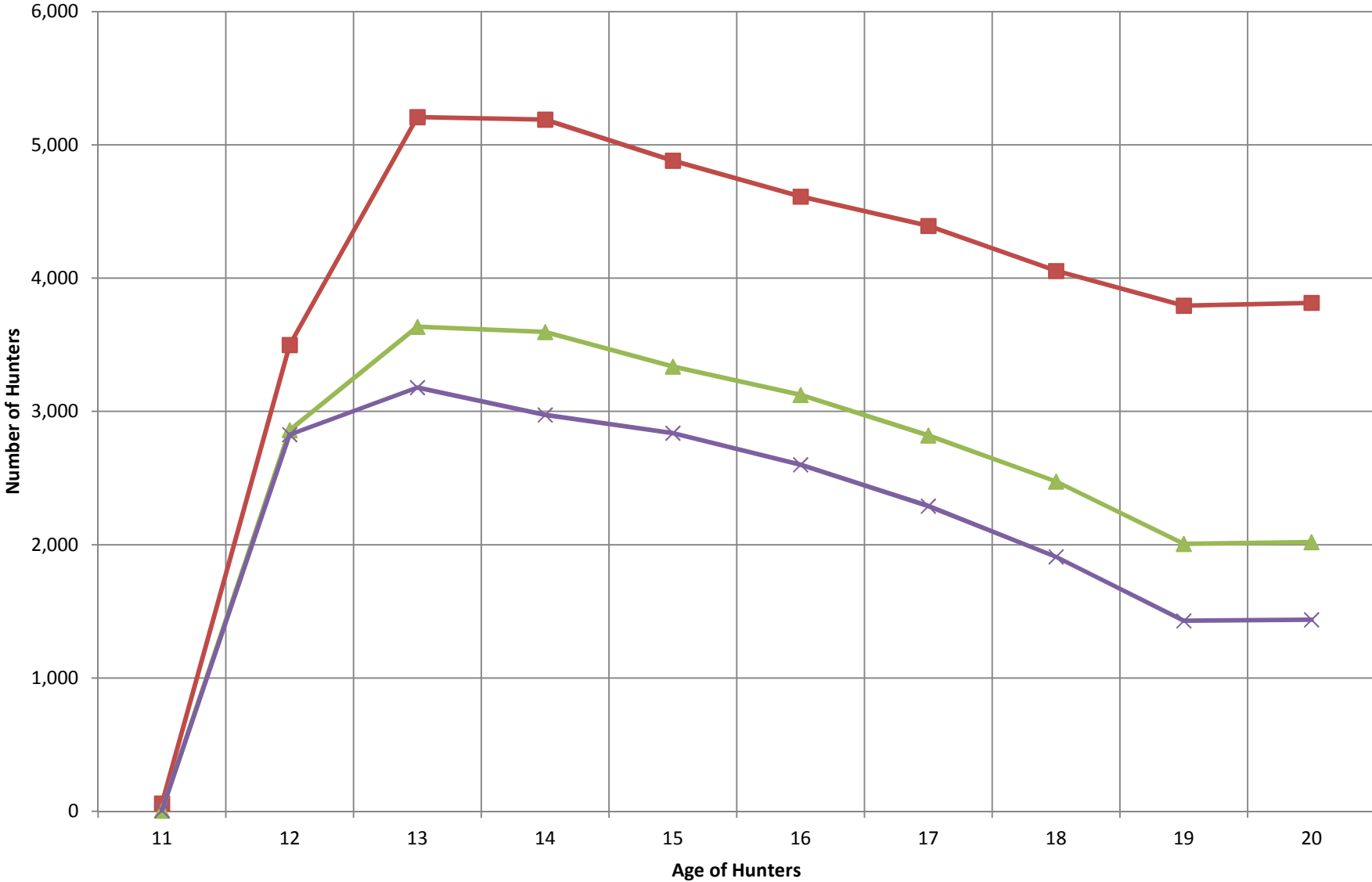
Total
% of 62-80

12-14 Deer	12-14 Elk	15-17 Deer	15-17 Elk	12-17 Deer	12-17 Elk
2,860	2,826			2,860	2,826
3,635	3,179			3,635	3,179
3,596	2,974			3,596	2,974
		3,337	2,837	3,337	2,837
		3,124	2,600	3,124	2,600
		2,820	2,290	2,820	2,290
10,091	8,979	9,281	7,727	19,372	16,706
52.09%	53.75%	47.91%	46.25%	100.00%	100.00%

62-80 Deer	62-80 Elk	65-80 Deer	65-80 Elk	67-80 Deer	67-80 Elk	70-80 Deer	70-80 Elk
2,132	1,952						
2,061	1,864						
2,045	1,884						
2,061	1,841	2,061	1,841				
1,833	1,666	1,833	1,666				
1,415	1,232	1,415	1,232	1,415	1,232		
1,328	1,205	1,328	1,205	1,328	1,205		
1,337	1,200	1,337	1,200	1,337	1,200		
1,292	1,158	1,292	1,158	1,292	1,158	1,292	1,158
1,057	939	1,057	939	1,057	939	1,057	939
1,002	908	1,002	908	1,002	908	1,002	908
855	754	855	754	855	754	855	754
747	646	747	646	747	646	747	646
613	540	613	540	613	540	613	540
540	479	540	479	540	479	540	479
466	400	466	400	466	400	466	400
353	324	353	324	353	324	353	324
302	257	302	257	302	257	302	257
246	210	246	210	246	210	246	210
21,685	19,459	15,447	13,759	11,553	10,252	7,473	6,615
100.00%	100.00%	71.23%	70.71%	53.28%	52.69%	34.46%	33.99%

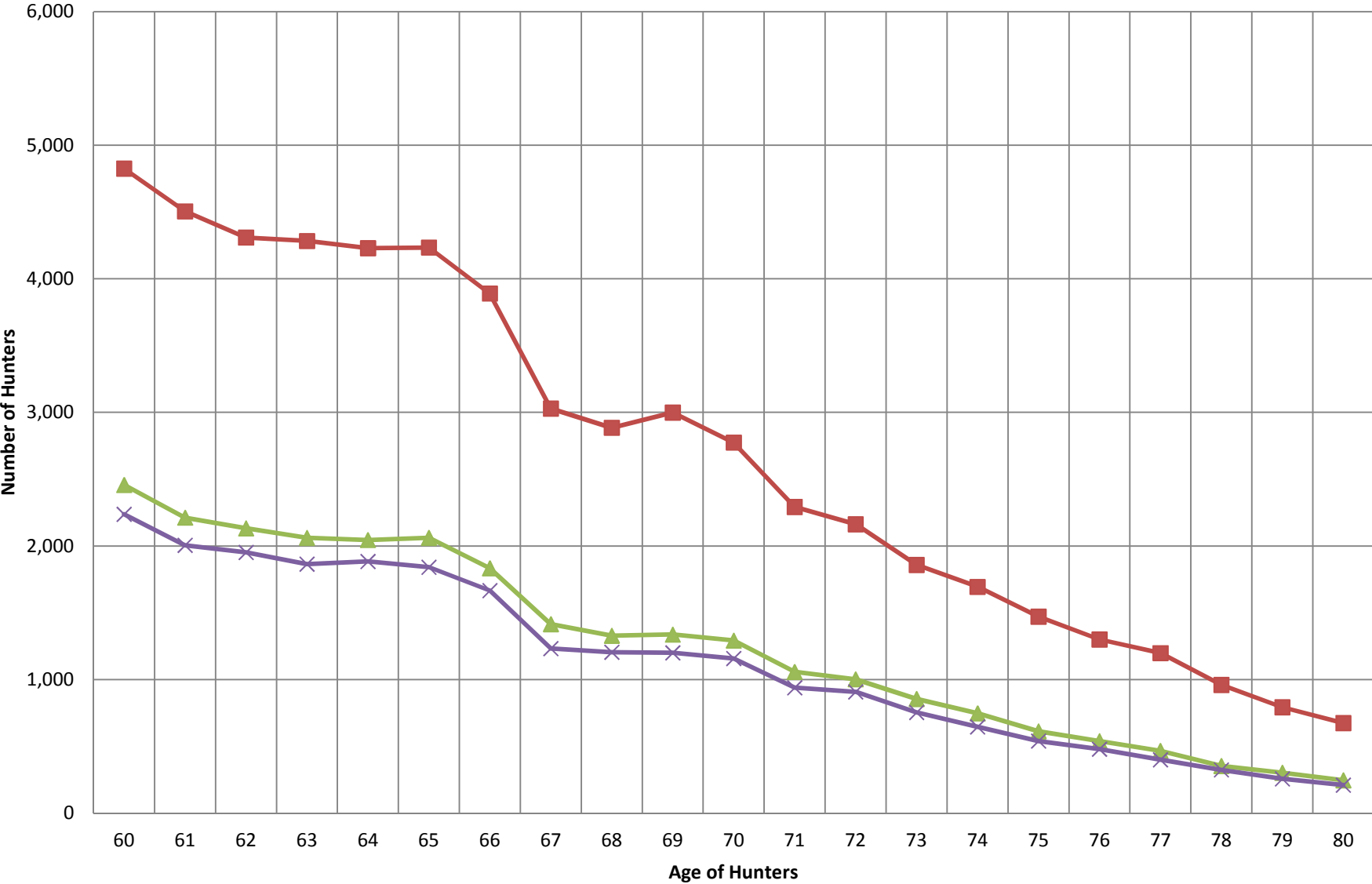
% H. Deer	% H. Elk	% Neither
10.17%	10.17%	89.83%
81.76%	80.79%	18.12%
69.80%	61.04%	29.36%
69.29%	57.30%	29.54%
68.37%	58.12%	29.95%
67.74%	56.37%	30.75%
64.21%	52.14%	33.93%
61.05%	47.09%	37.07%
52.90%	37.66%	44.33%
52.92%	37.67%	44.22%
50.92%	46.36%	43.96%
49.10%	44.51%	46.19%
49.48%	45.30%	45.53%
48.12%	43.52%	47.21%
48.36%	44.55%	46.72%
48.68%	43.48%	47.02%
47.12%	42.83%	48.69%
46.72%	40.67%	49.62%
46.03%	41.77%	49.32%
44.58%	40.01%	50.75%
46.58%	41.74%	49.17%
46.12%	40.97%	49.04%
46.32%	41.98%	48.96%
46.02%	40.58%	49.30%
44.10%	38.13%	51.06%
41.67%	36.71%	53.16%
41.54%	36.85%	53.08%
38.90%	33.39%	56.68%
36.77%	33.75%	56.25%
38.08%	32.41%	56.62%
36.50%	31.16%	57.57%

Deer, Elk and Conservation Purchases 11-20



Consv Total Deer Total Elk

Deer, Elk and Conservation Purchases 60-80



Consv Total Deer Total Elk

Deer, Elk and Conservation Purchases 11-20 & 60-80

