



Montana Fish, Wildlife & Parks

Elk Brucellosis Project Update June 2013

Julee Shamhart and pilot Neil Cadwell conducted a monitoring flight on June 27 and located 28 of the 30 seronegative, radiocollared elk (Figure 1) and all 10 of the seropositive, radiocollared elk (Figure 2). The seronegative, radiocollared elk in the Pioneers were generally located at higher elevations than during the May flight. Two Christiansen creek elk are now located on the northwest side of highway 43 at lower elevations. Four of the 10 seropositive, radiocollared elk have moved south into Idaho.

Seropositive, radiocollared elk were monitored 5 to 7 times each week during June until their vaginal implant transmitters (VITs) were expelled. As of July 1, 9 of 10 VITs have been expelled and 8 of those have been retrieved. One VIT that malfunctioned and went off the air in April has not been retrieved. Samples have been collected at 7 birth sites. One VIT was expelled in mid-May and the birth site was never located. One radiocollared elk VIT (15) remains on "live" mode and continues to be monitored for evidence of calving.

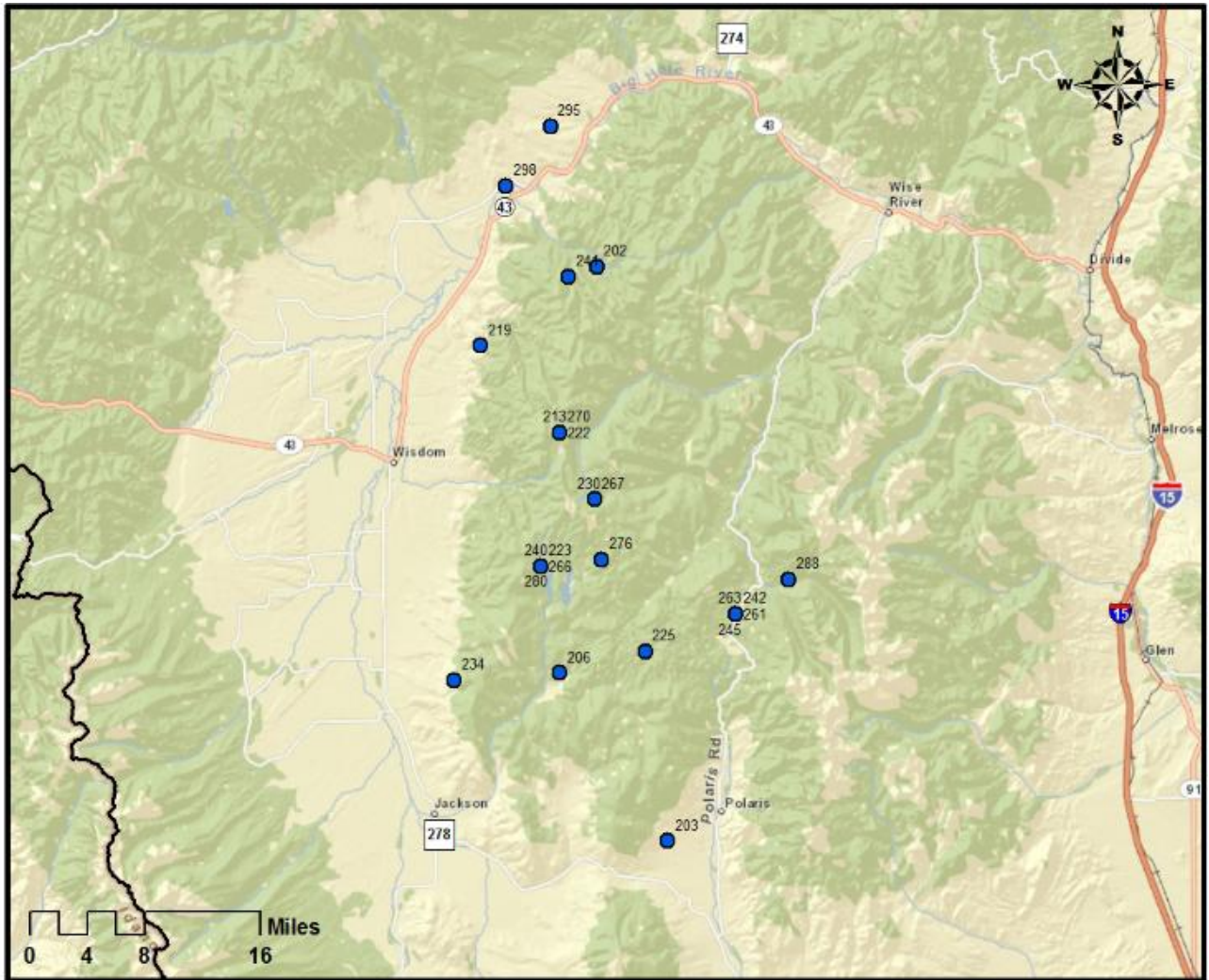


Figure 1. 28 of 30 collared, seronegative elk were located during the June 27, 2013 monitoring flight.

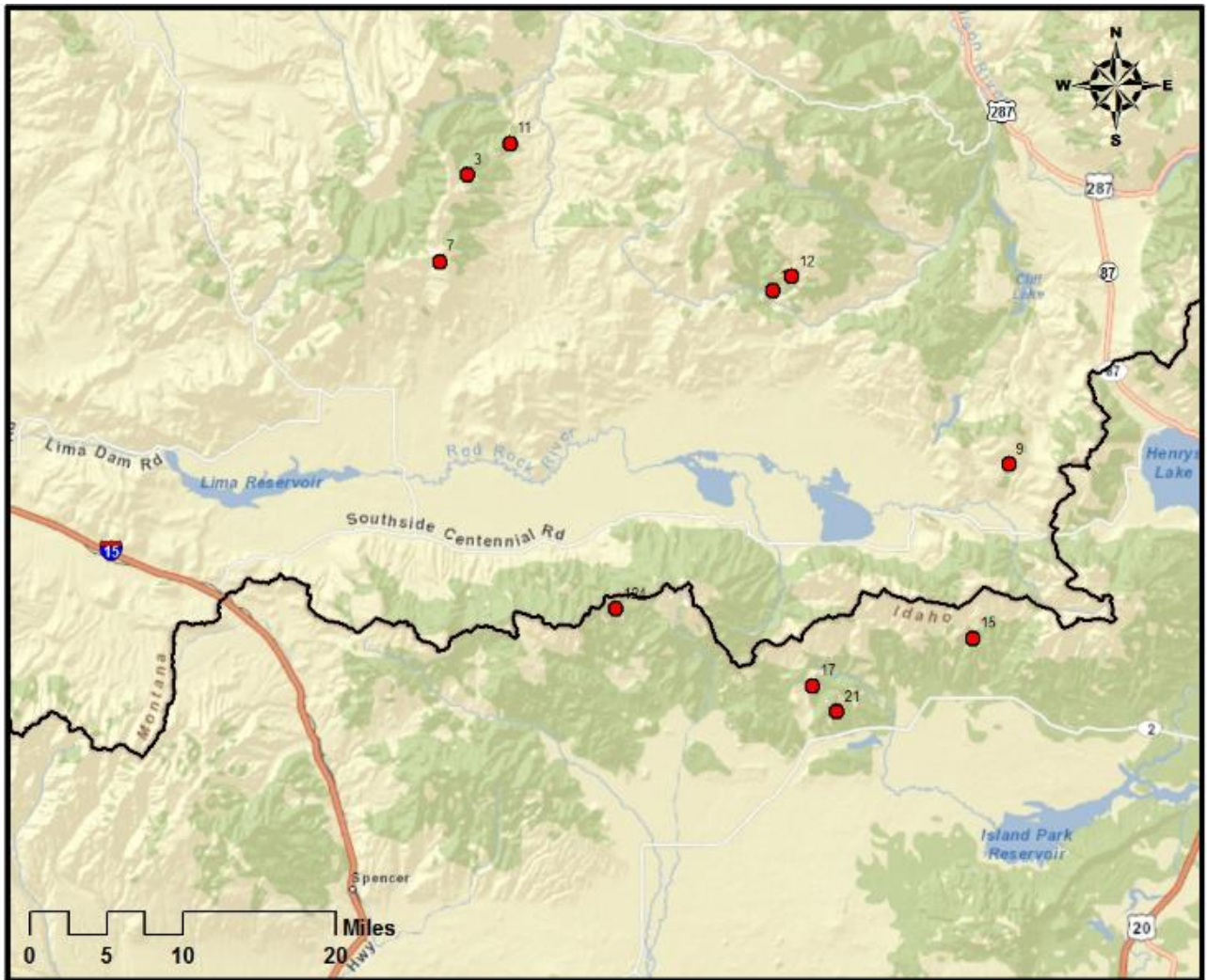


Figure 2. 10 collared, seropositive elk located during the June 27, 2013 monitoring flight.