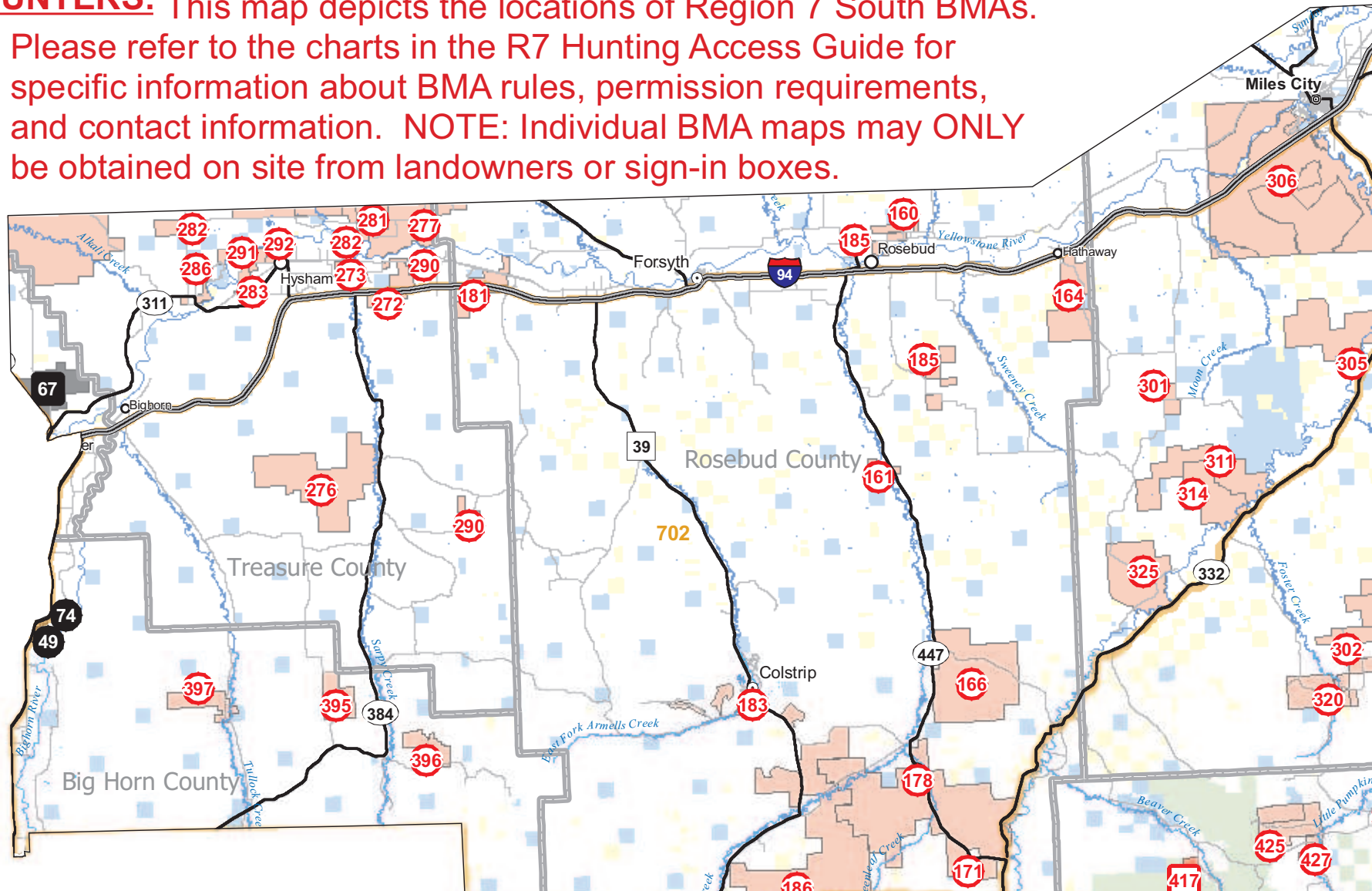
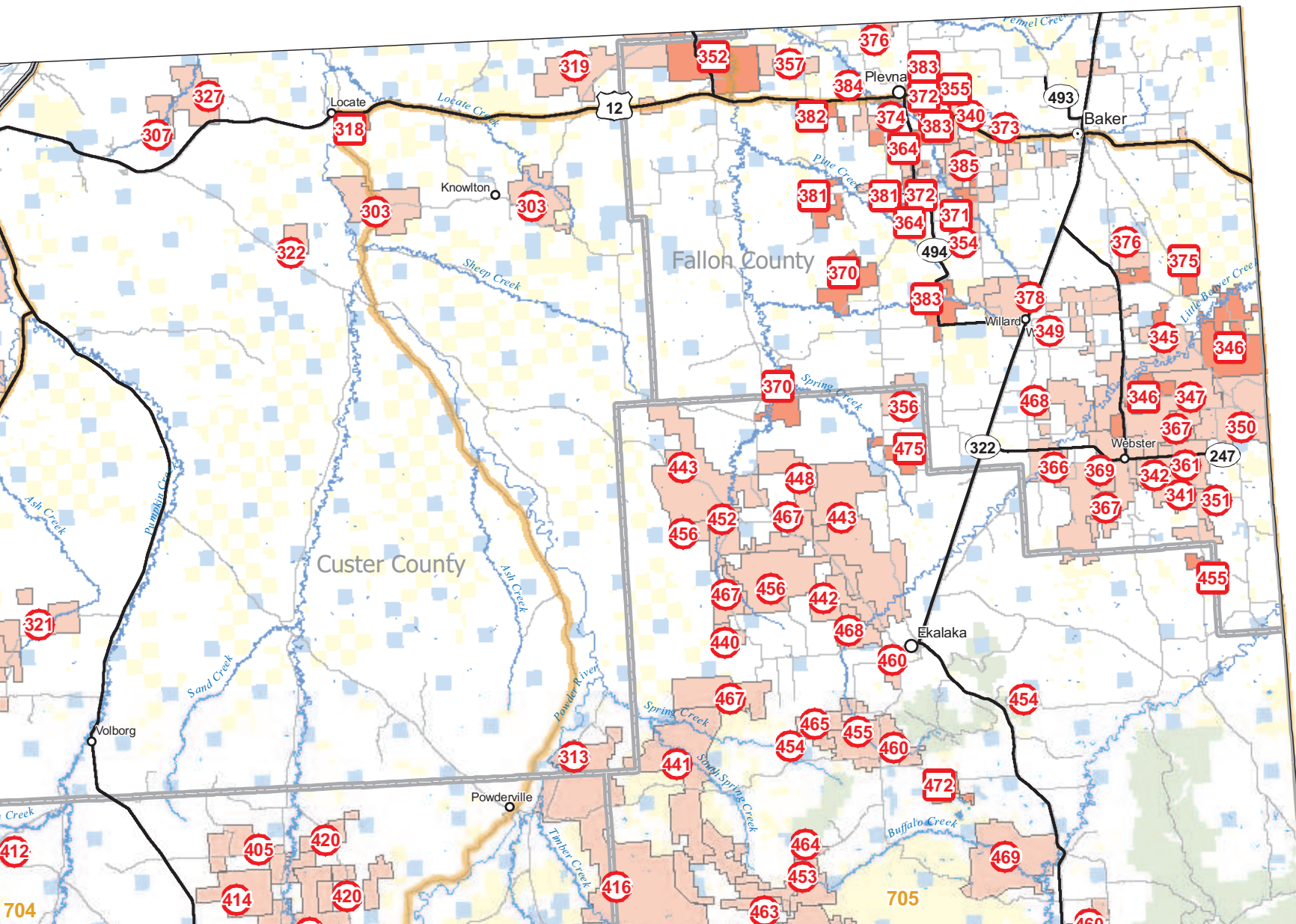


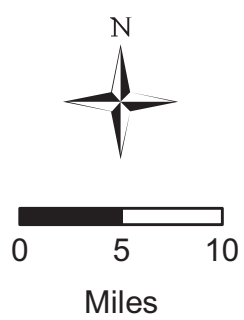
Region 7 South Block Management Areas

Valid only for the 2012 hunting season.

HUNTERS: This map depicts the locations of Region 7 South BMAs. Please refer to the charts in the R7 Hunting Access Guide for specific information about BMA rules, permission requirements, and contact information. NOTE: Individual BMA maps may ONLY be obtained on site from landowners or sign-in boxes.





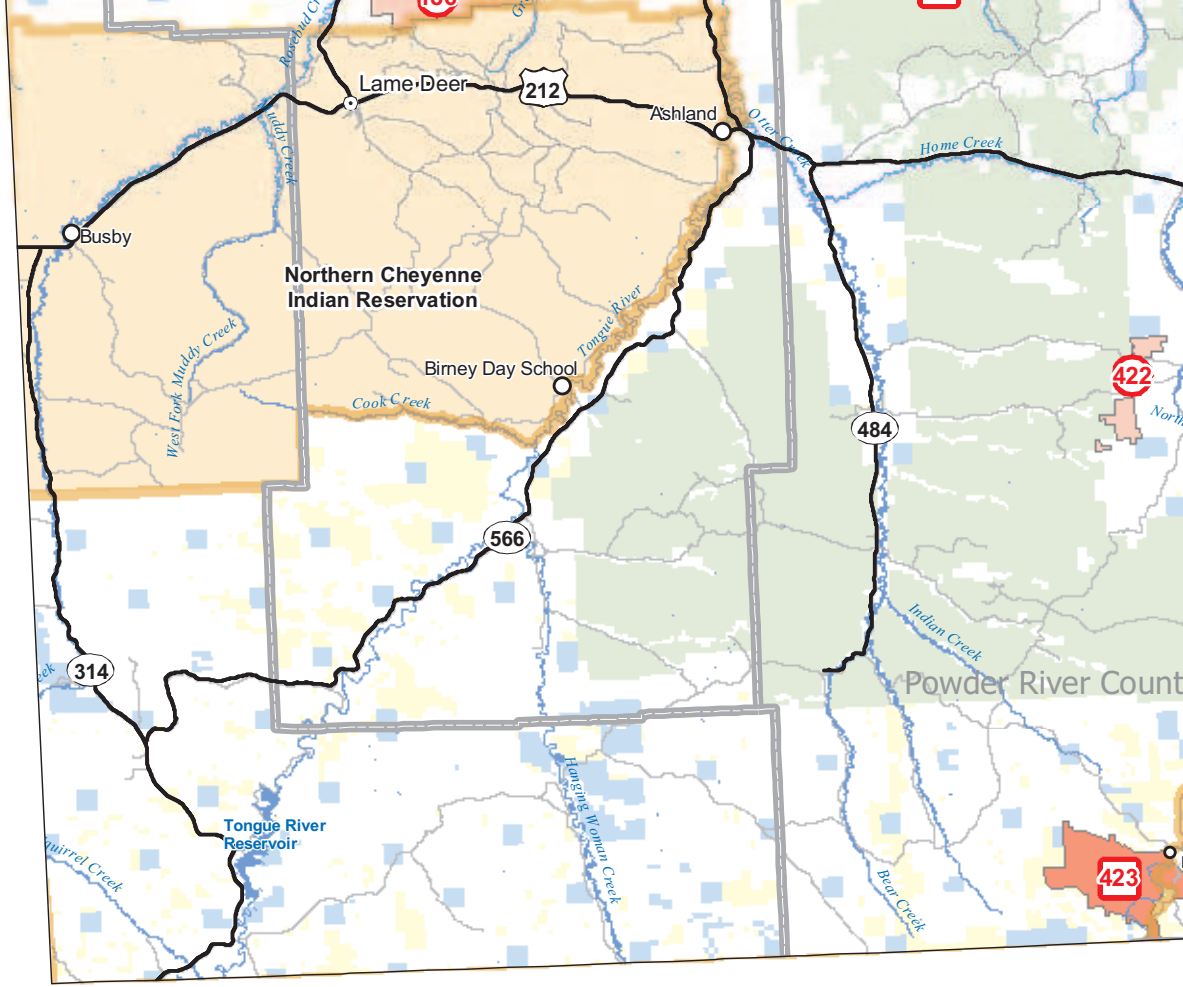


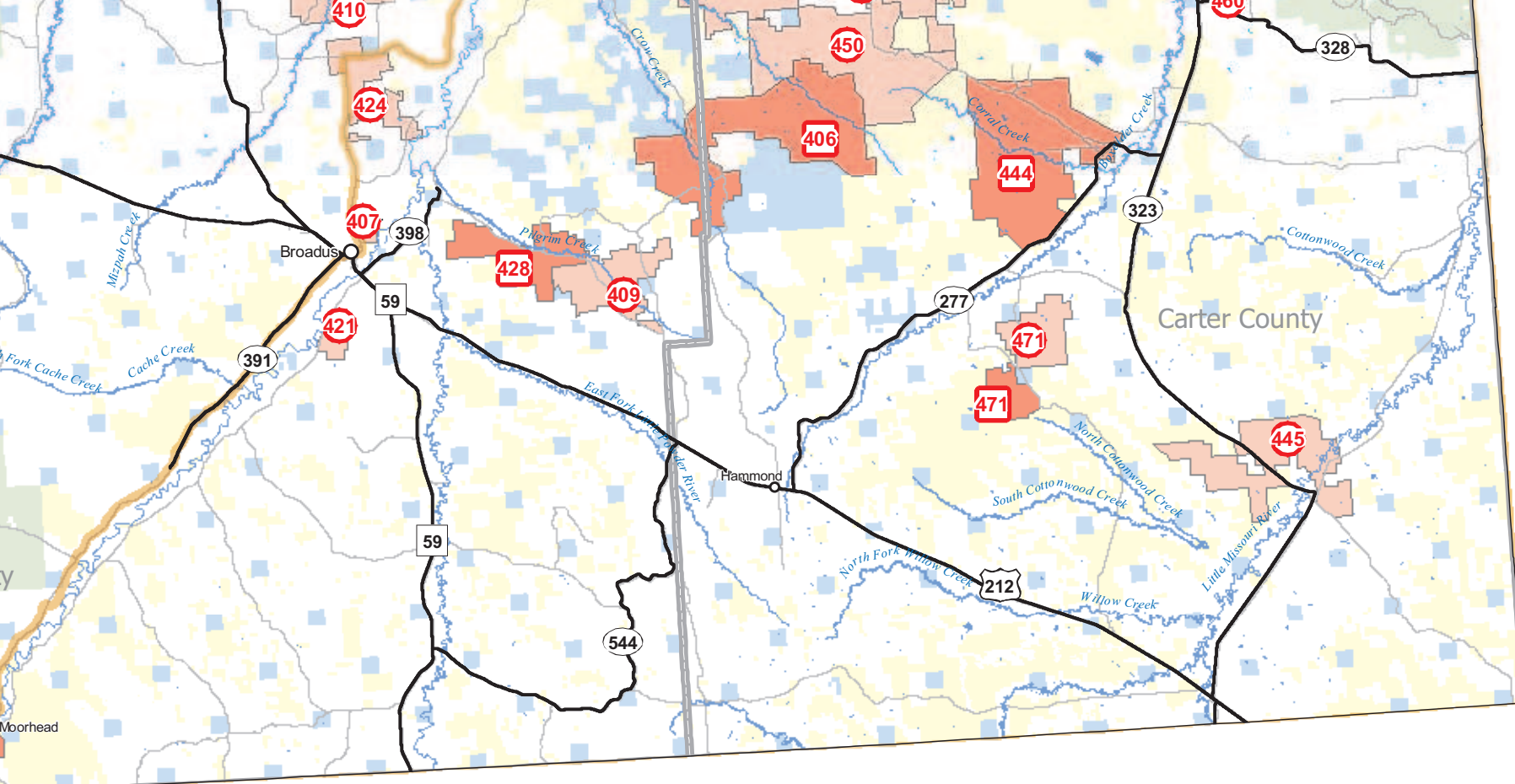
1 : 600,000
1 inch = 9 miles

- Bureau of Land Management
- U.S. Forest Service
- Other Federal
- Indian Reservation
- State
- Private; Other

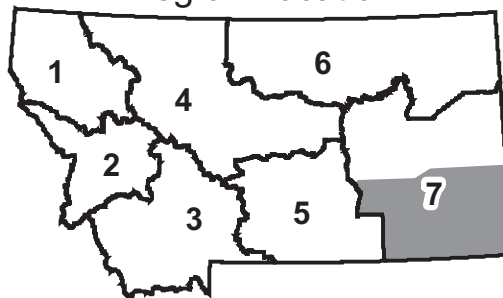
- TYPE I BMA – Permission Administered by Hunters (See BMA Chart)
- TYPE II BMA - Permission Not Administered by Hunters (See BMA Chart)

- TYPE I BMAs Administered by State (See BMA Chart for A)
- TYPE II BMAs Administered by State (See BMA Chart for A)
- Deer/Elk/Lion Hunting





Region Location



bordered by Adjacent Region (Adjacent Region)

bordered by Adjacent Region (Adjacent Region)

County District



**Montana Fish,
Wildlife & Parks**