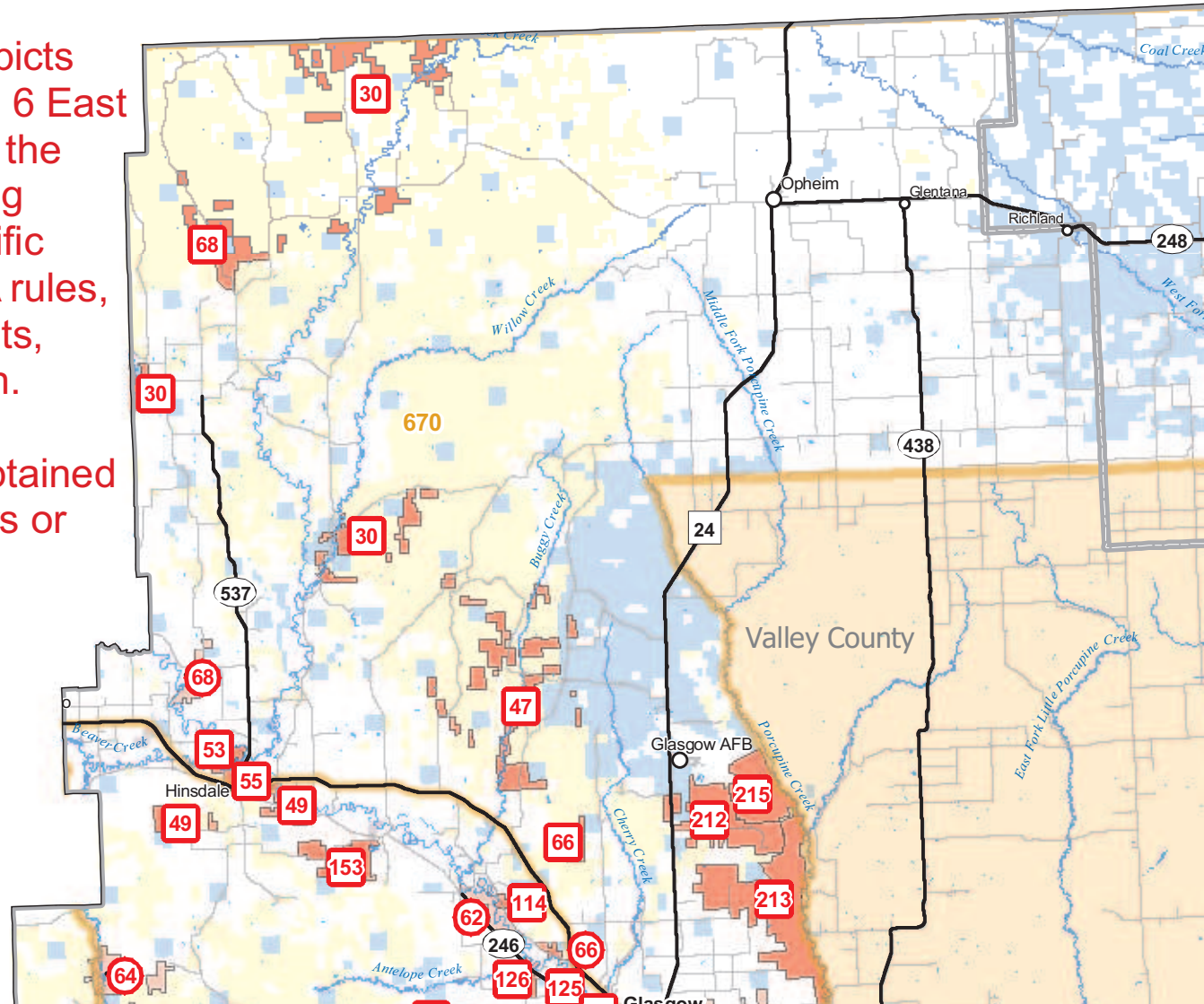
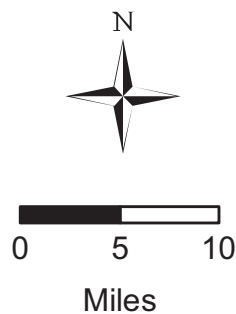
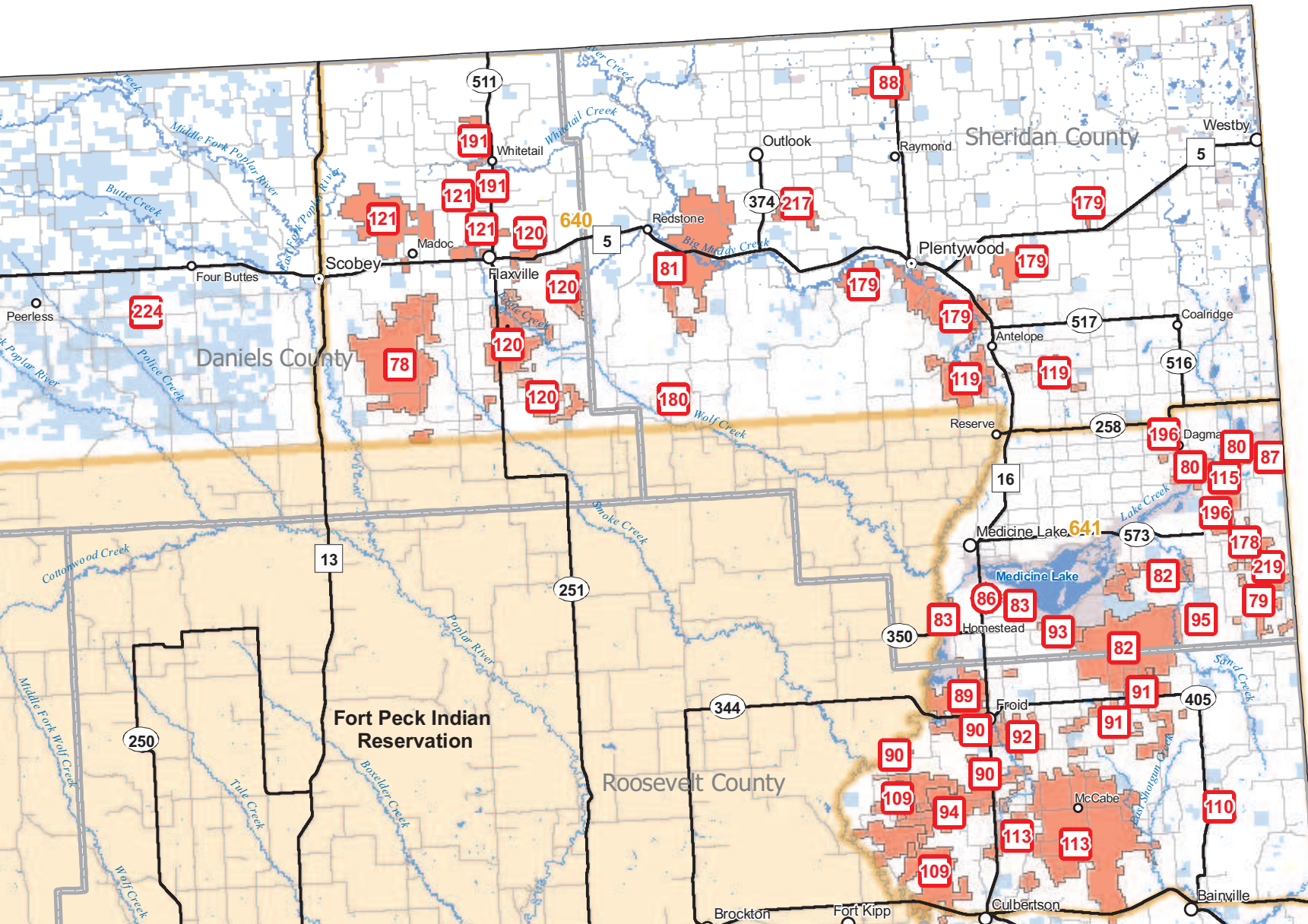


# Region 6 East - Block Management Areas

Valid only for the 2012 hunting season.

**HUNTERS:** This map depicts the locations of Region 6 East BMAs. Please refer to the charts in the R6 Hunting Access Guide for specific information about BMA rules, permission requirements, and contact information. NOTE: Individual BMA maps may ONLY be obtained on site from landowners or sign-in boxes.

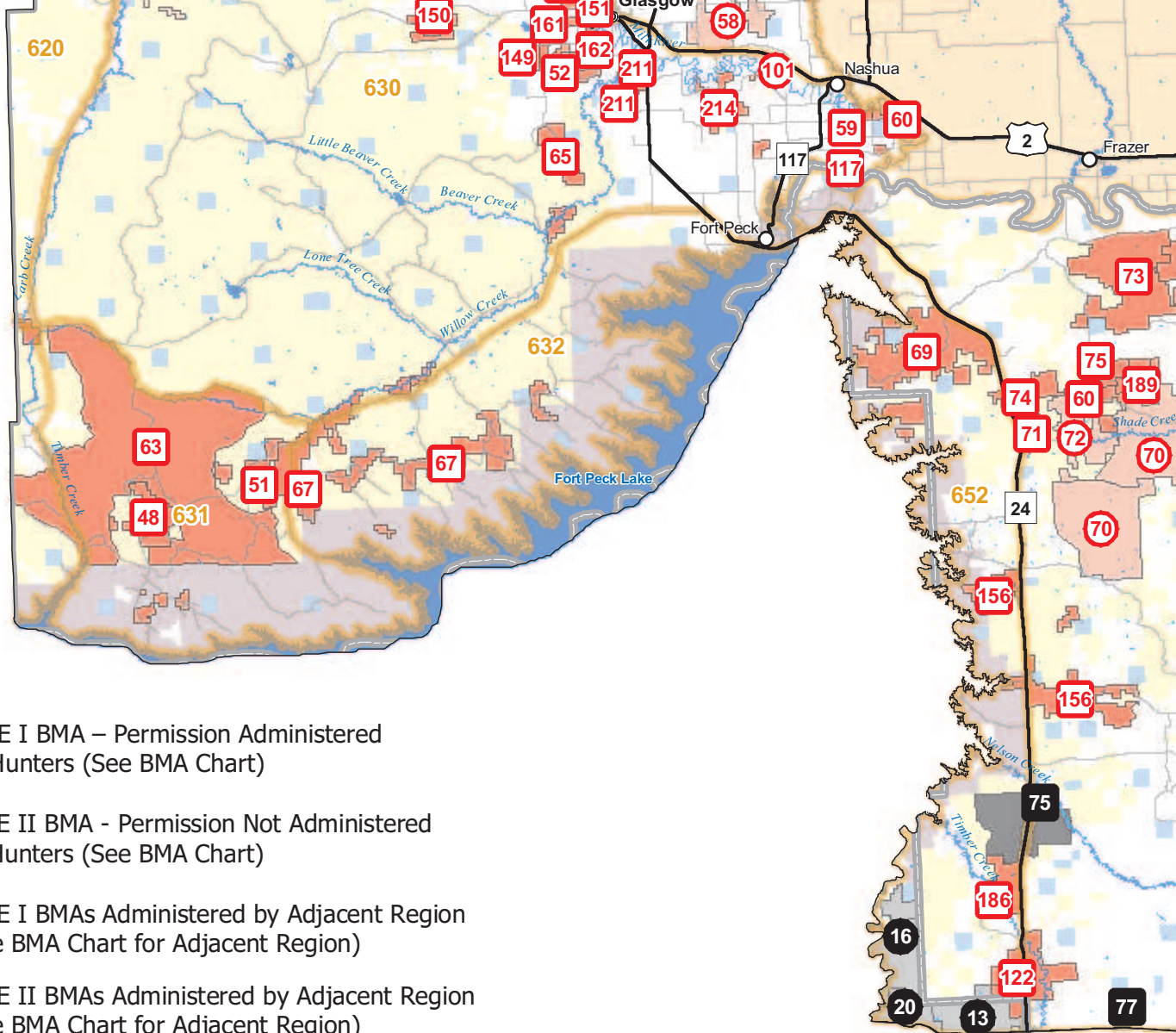




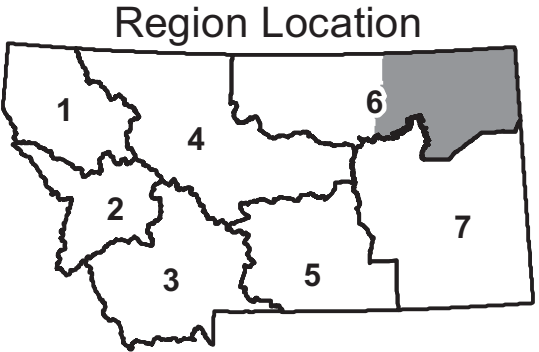
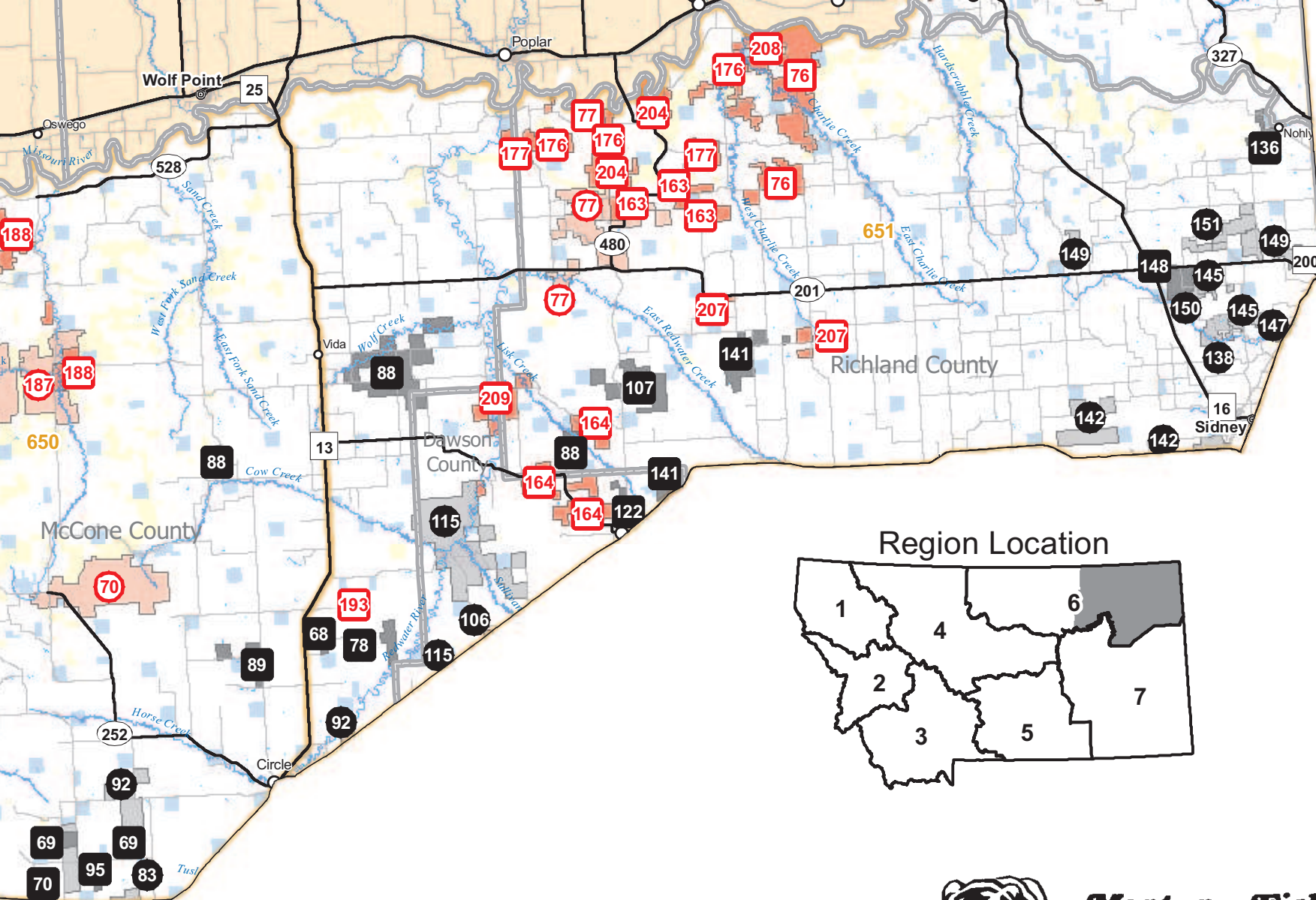


1 : 600,000  
1 inch = 9 miles

- Bureau of Land Management
- U.S. Forest Service
- Other Federal
- Indian Reservation
- State
- Private; Other



- TYPE I BMA – Permission Administered by Hunters (See BMA Chart)
- TYPE II BMA - Permission Not Administered by Hunters (See BMA Chart)
- TYPE I BMAs Administered by Adjacent Region (See BMA Chart for Adjacent Region)
- TYPE II BMAs Administered by Adjacent Region (See BMA Chart for Adjacent Region)
- Deer/Elk/Lion Hunting District



**Montana Fish,  
Wildlife & Parks**