










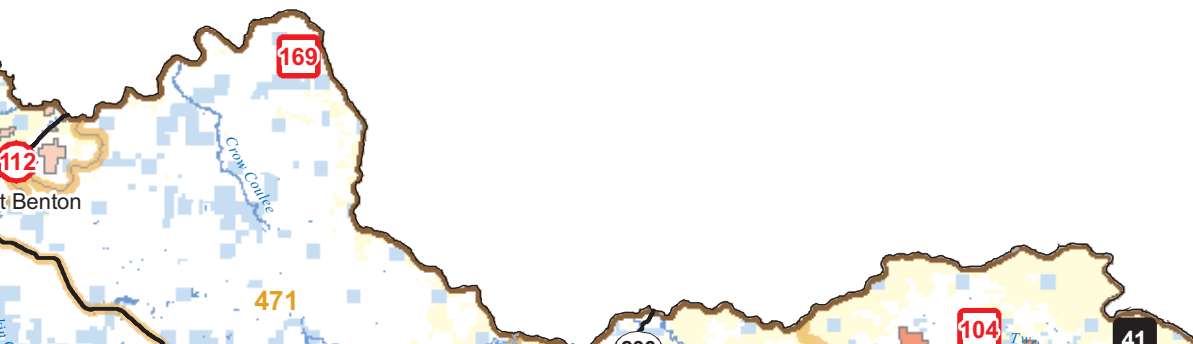
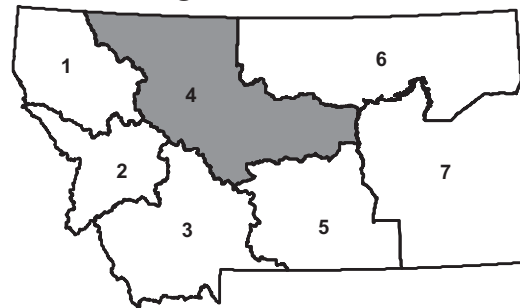
HUNTERS: This map only depicts general locations of BMAs for Region 4. To gain access to a BMA, please use the Regional charts in the Hunting Access Guide and individual BMA map for specific information about BMA rules, permission requirements, and contact information.

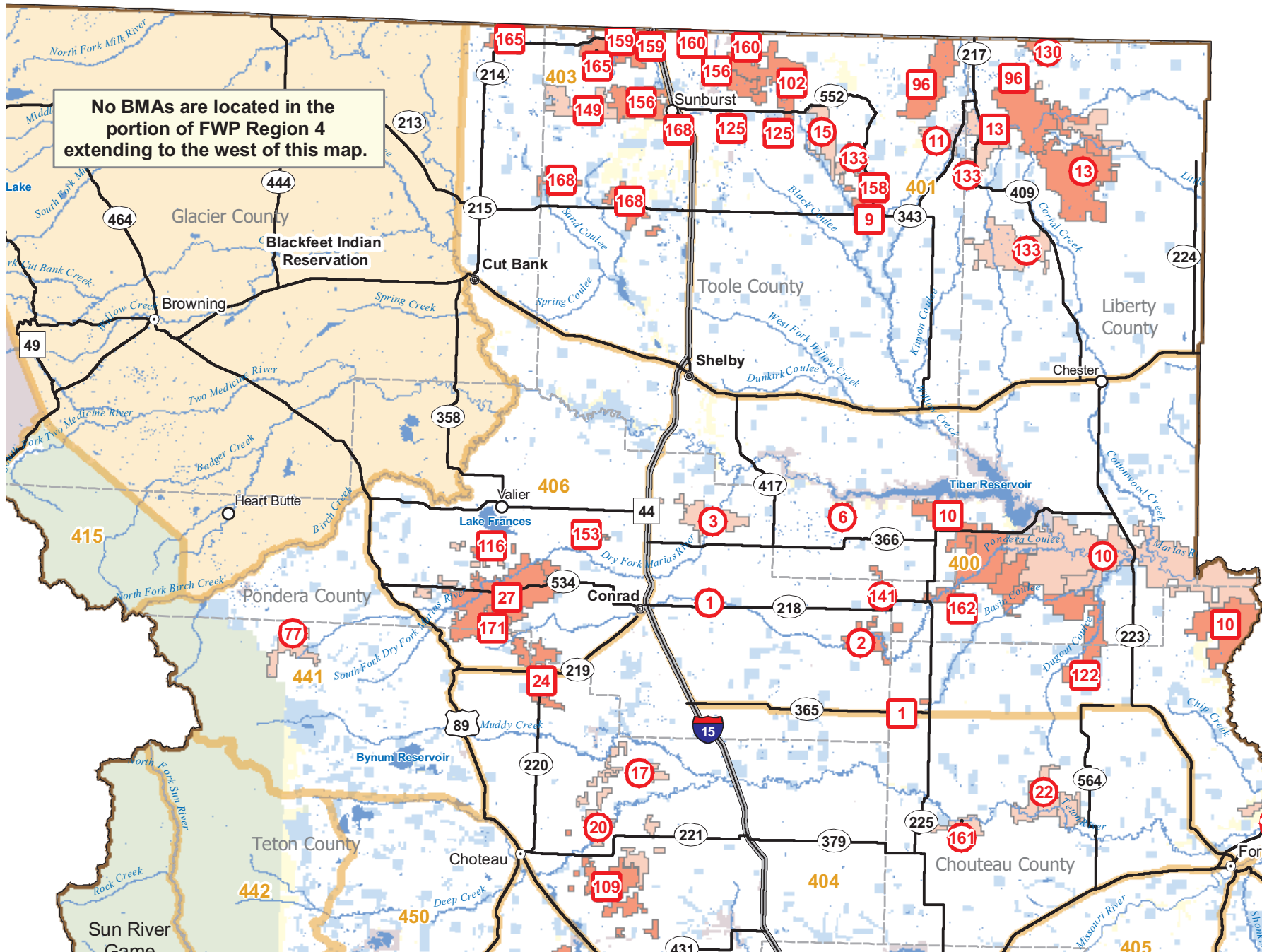
Region 4 - Block Management Areas

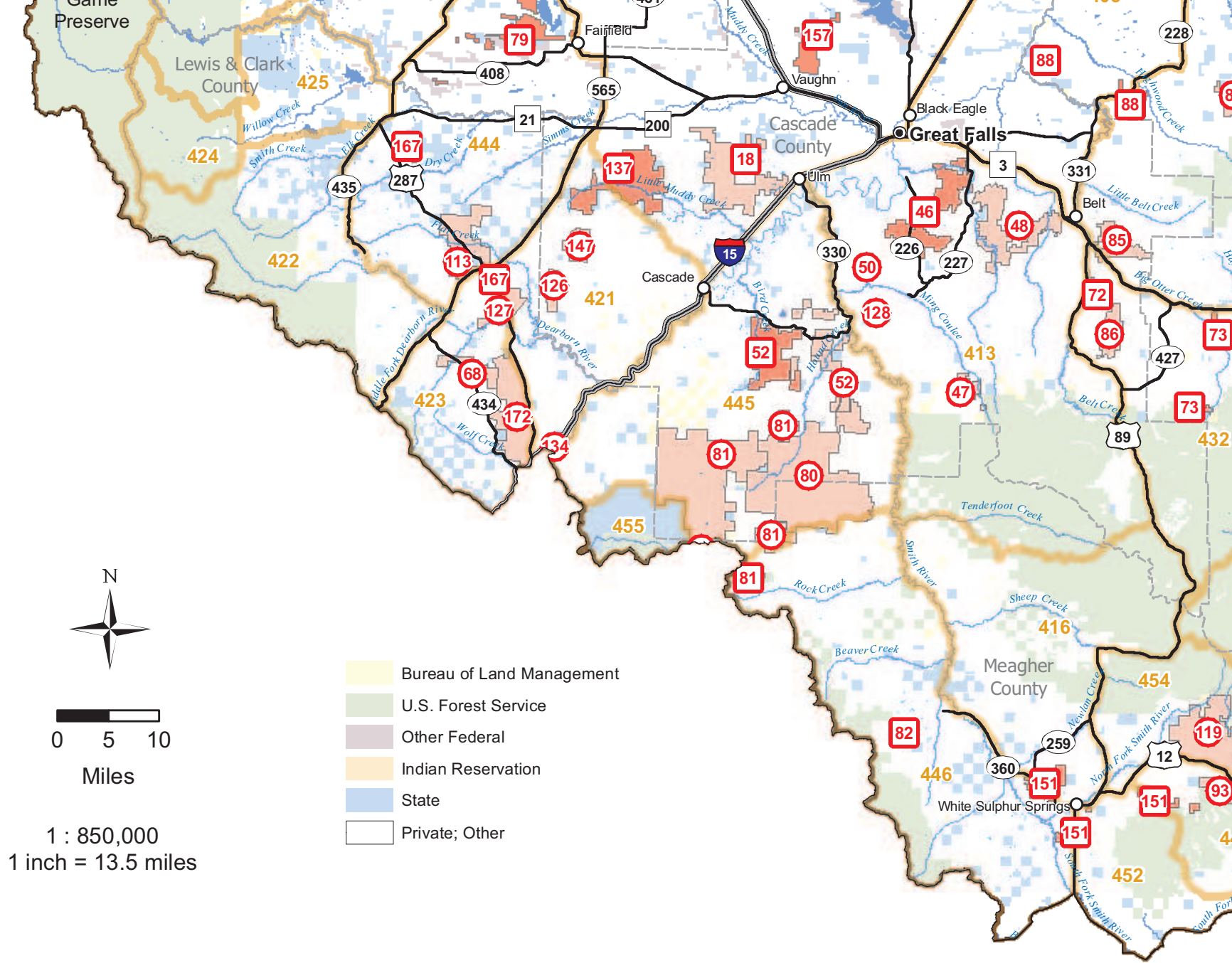
Valid only for the 2012 hunting season.

-   TYPE I BMA – Permission Administered by Hunters (See BMA Chart)
-   TYPE II BMA - Permission Not Administered by Hunters (See BMA Chart)
-   TYPE I BMAs Administered by Adjacent Region (See BMA Chart for Adjacent Region)
-   TYPE II BMAs Administered by Adjacent Region (See BMA Chart for Adjacent Region)
-  Deer/Elk/Lion Hunting District

Region Location



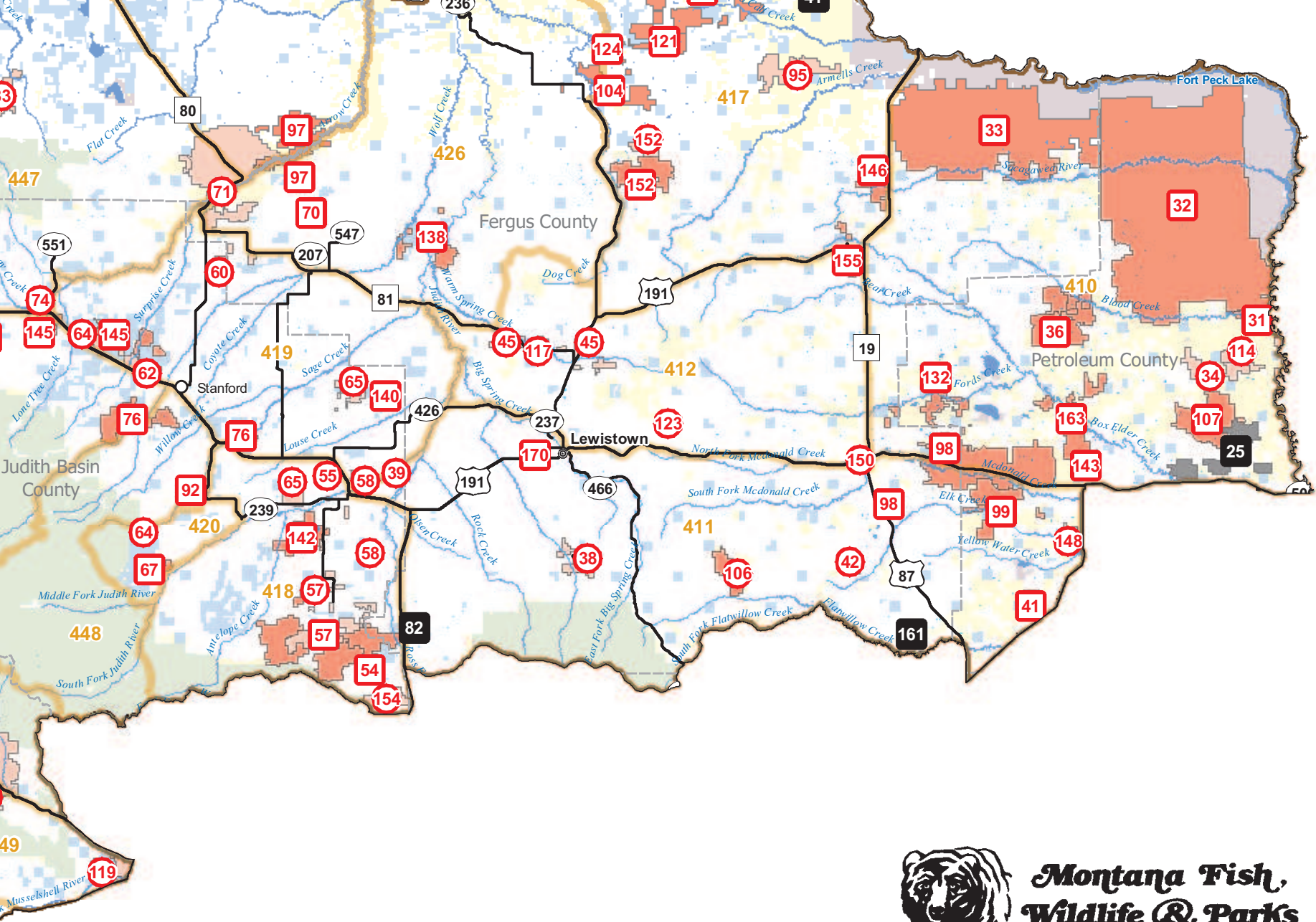




0 5 10
Miles

1 : 850,000
1 inch = 13.5 miles

- Bureau of Land Management
- U.S. Forest Service
- Other Federal
- Indian Reservation
- State
- Private; Other



**Montana Fish,
Wildlife & Parks**