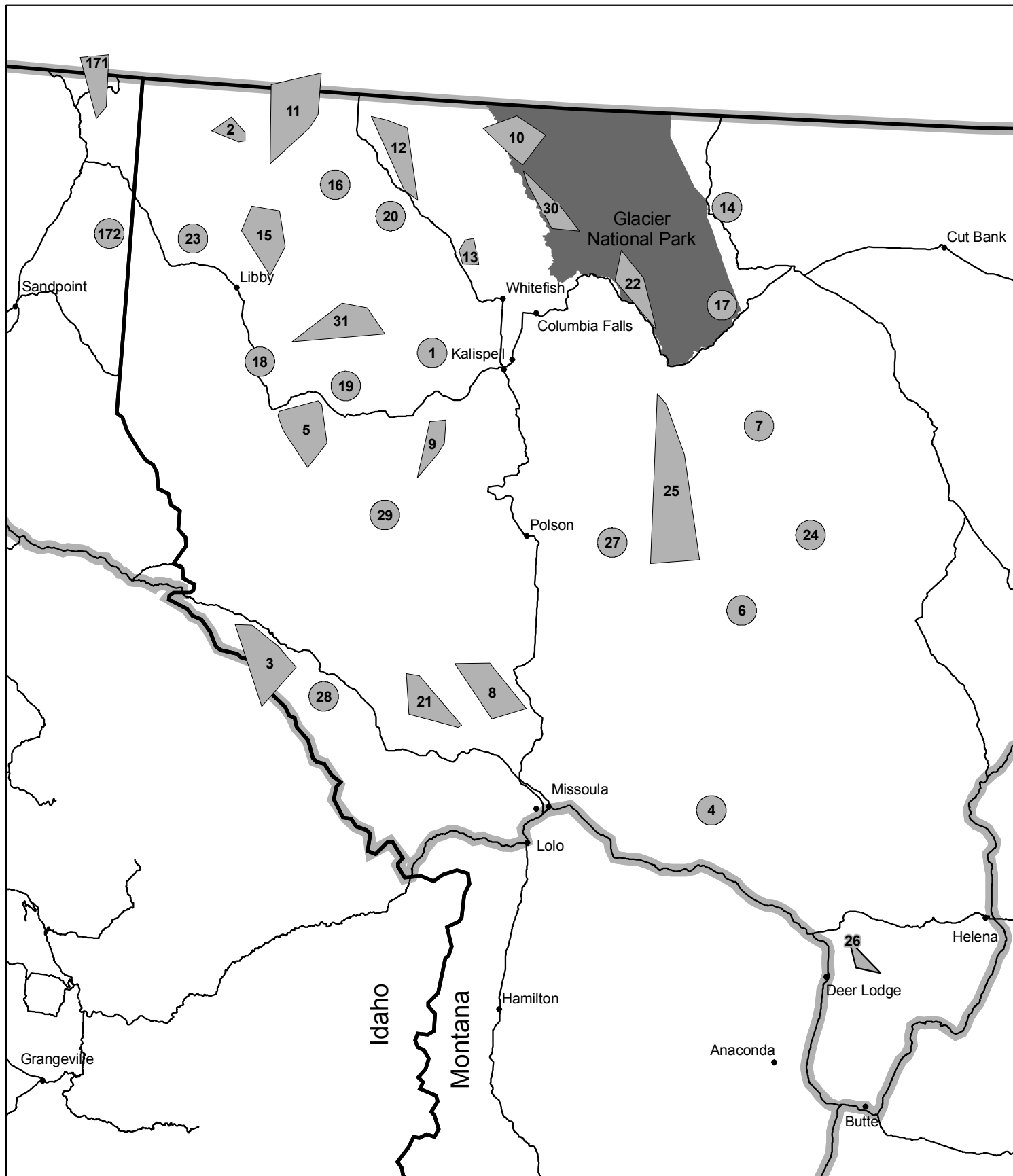
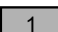





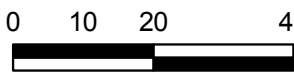


Figure 2. Northwest Montana Wolf Recovery Area



-  Wolf Pack Distribution (See Tables)
-  Recovery Area Boundary
-  State Boundary
-  Major Highways
-  National Park Service





 Miles

Montana Fish, Wildlife and Parks Information Services Division generated wolf pack locations from telemetry locations and other data provided by US Fish & Wildlife Service, National Park Service, Idaho Fish & Game, Nez Perce Tribe, and Wyoming Game & Fish. All other data layers from Montana Natural Resource Information System, Idaho and Wyoming data clearinghouses. Other data layers digitized at 1:100,000.

