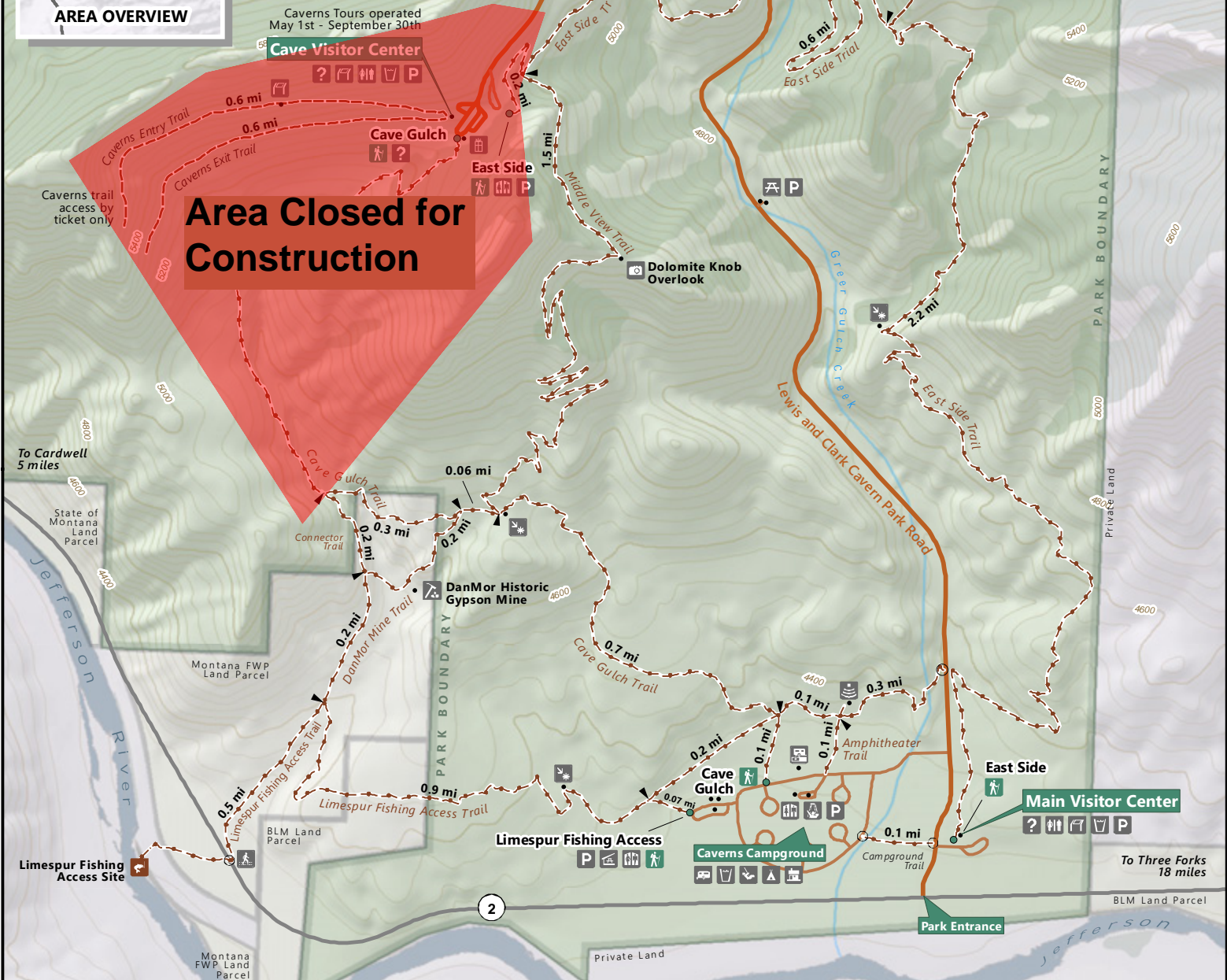
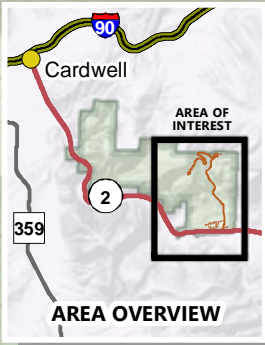




# LEWIS AND CLARK CAVERNS

STATE PARK | TRAIL MAP

DIVISION OF MONTANA  
FISH, WILDLIFE & PARKS  
STATEPARKS.MT.GOV



**Area Closed for Construction**

Trailhead	Amphitheater	Interpretive Exhibit	Point of Interest	Teepee Rental
Trail Access	Cabin Rental	Interpretive Trail	Restroom (flush)	Visitor Information
Trail Intersection	Campground (electric)	Parking	Restroom (vault)	Water
<b>TRAIL USE</b>	Fishing Access Site	Pedestrian Crossing	RV Waste Disposal	Main Park Road
Hiking	Gift Shop	Picnic Area	Scenic Viewpoint	Secondary Road
Hiking, Biking	Group Use Picnic Shelter	Playground	Shower	Stream

**STAY ON ESTABLISHED TRAILS TO MINIMIZE IMPACTS AND AVOID ADDITIONAL HAZARDS**  
Please consult park staff to gather more information on specific trail conditions, trail difficulty, and route selection. Trail lengths are in miles. Elevation levels are in feet. Portions of trails depicted on this map, which fall outside of the State Park boundary, are on other publically accessible state and federal land. The Caverns entry and exit trails, unless authorized otherwise by park staff, are reserved for visitors who have purchased a caverns tour ticket only. No claims are made to the accuracy of the data or its suitability to a particular use.