



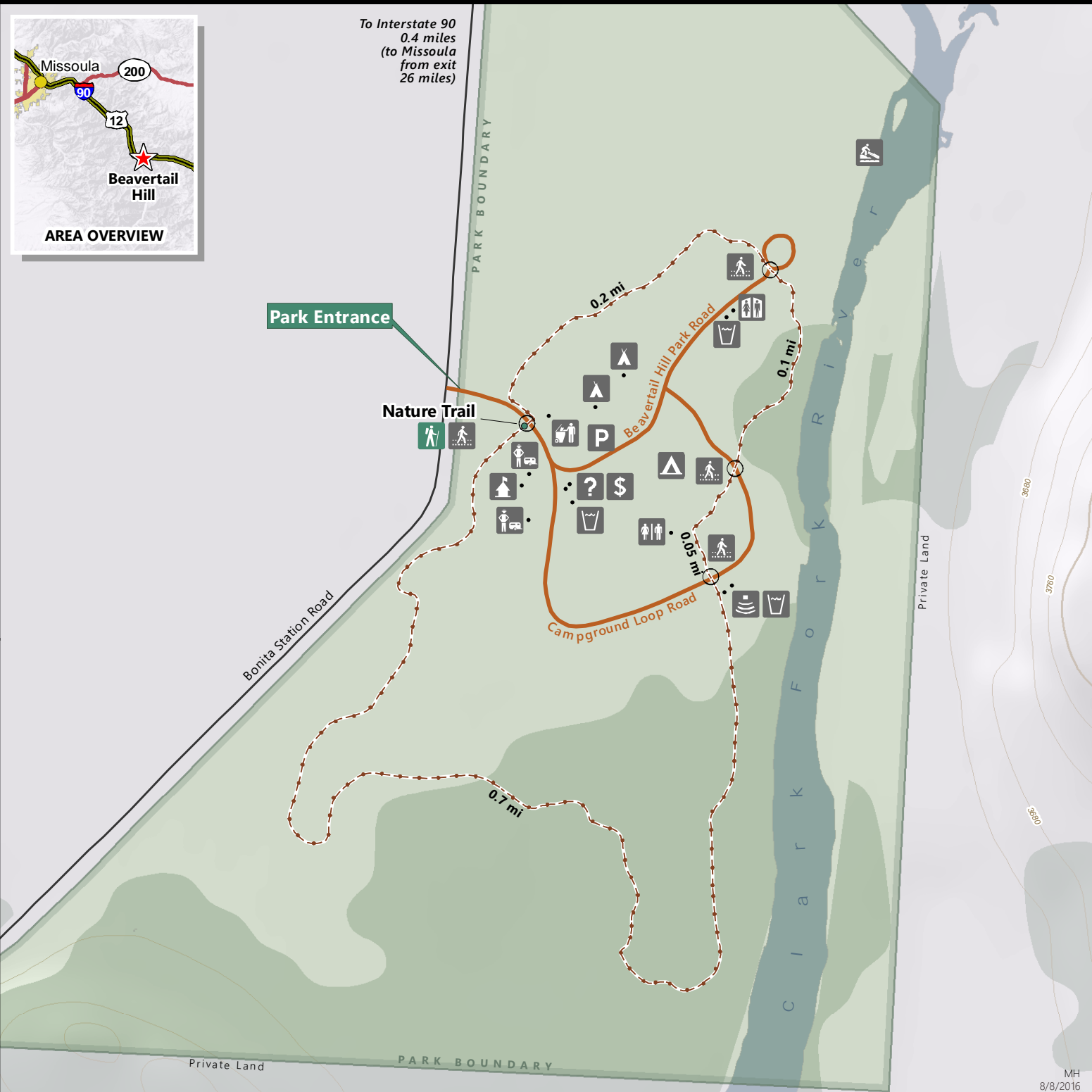
BEAVERTAIL HILL

STATE PARK | TRAIL MAP

DIVISION OF MONTANA
FISH, WILDLIFE & PARKS
STATEPARKS.MT.GOV



To Interstate 90
0.4 miles
(to Missoula
from exit
26 miles)



MH
8/8/2016

Trailhead	Amphitheater	Fee Station	Restroom (vault)
Trail Access	Boat Ramp (hand launch)	Parking	Teepee Rental
Trail Intersection	Campground	Park Office	Visitor Information
TRAIL USE	Campground Host	Pedestrian Crossing	Water
Hiking, Biking	Disposal Station	Restroom (flush)	Main Park Road

Please consult park staff for current trail conditions. Trail lengths are in miles. Elevation levels are in feet and are separated by 40 foot intervals. No claims are made to the accuracy of the data or its suitability to a particular use.

