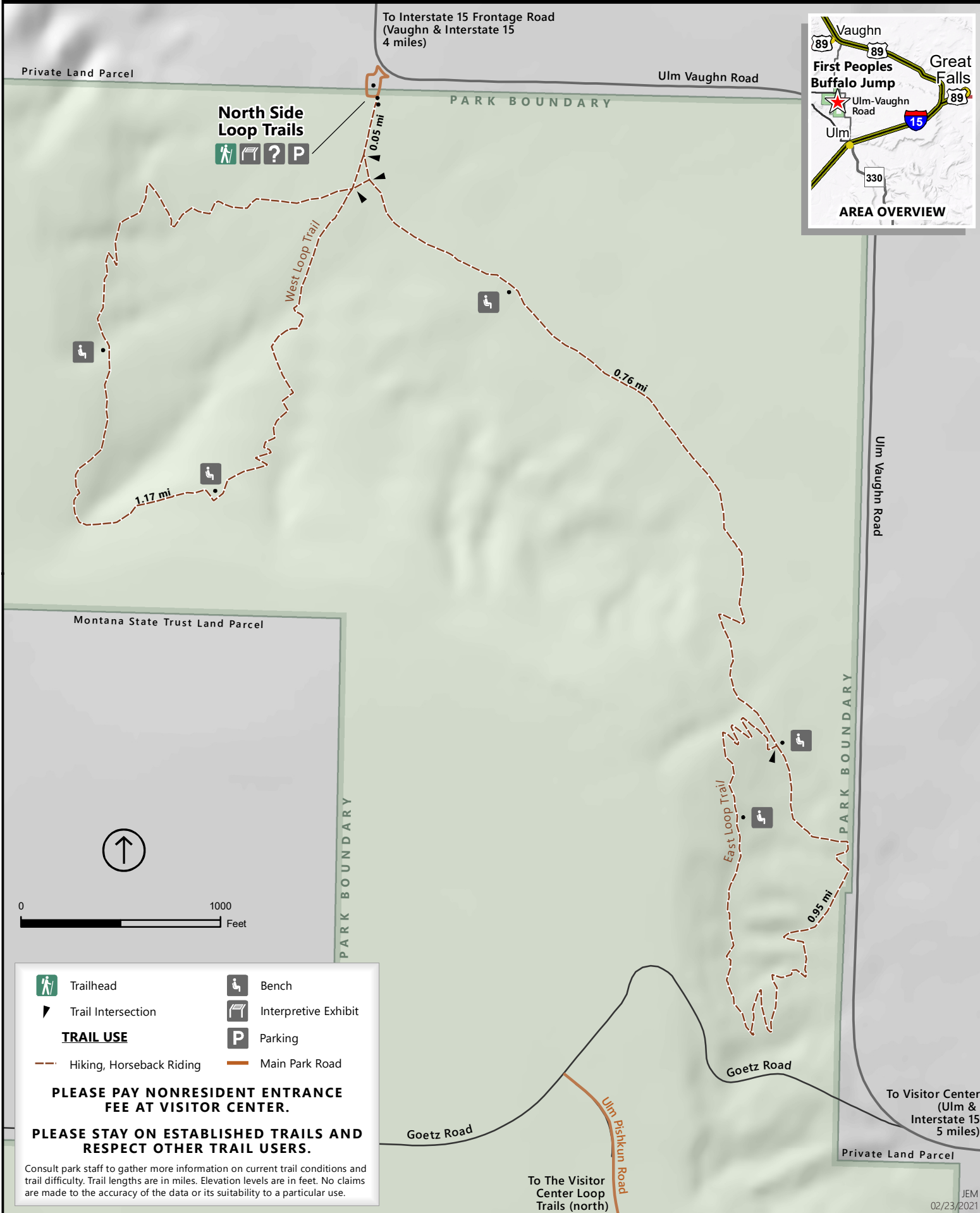




FIRST PEOPLES BUFFALO JUMP

STATE PARK | TRAIL MAP: NORTH SIDE LOOP TRAILS

DIVISION OF MONTANA
FISH, WILDLIFE & PARKS
STATEPARKS.MT.GOV



PARK BOUNDARY

PARK BOUNDARY

0 1000 Feet



- Trailhead
- Bench
- Trail Intersection
- Interpretive Exhibit
- TRAIL USE**
- Hiking, Horseback Riding
- Main Park Road
- Parking

PLEASE PAY NONRESIDENT ENTRANCE FEE AT VISITOR CENTER.

PLEASE STAY ON ESTABLISHED TRAILS AND RESPECT OTHER TRAIL USERS.

Consult park staff to gather more information on current trail conditions and trail difficulty. Trail lengths are in miles. Elevation levels are in feet. No claims are made to the accuracy of the data or its suitability to a particular use.

To Interstate 15 Frontage Road (Vaughn & Interstate 15 4 miles)

Ulm Vaughn Road

North Side Loop Trails



West Loop Trail

1.17 mi

0.76 mi

East Loop Trail

0.95 mi

Goetz Road

Ulm Pliskun Road

Ulm Vaughn Road

To Visitor Center (Ulm & Interstate 15 5 miles)

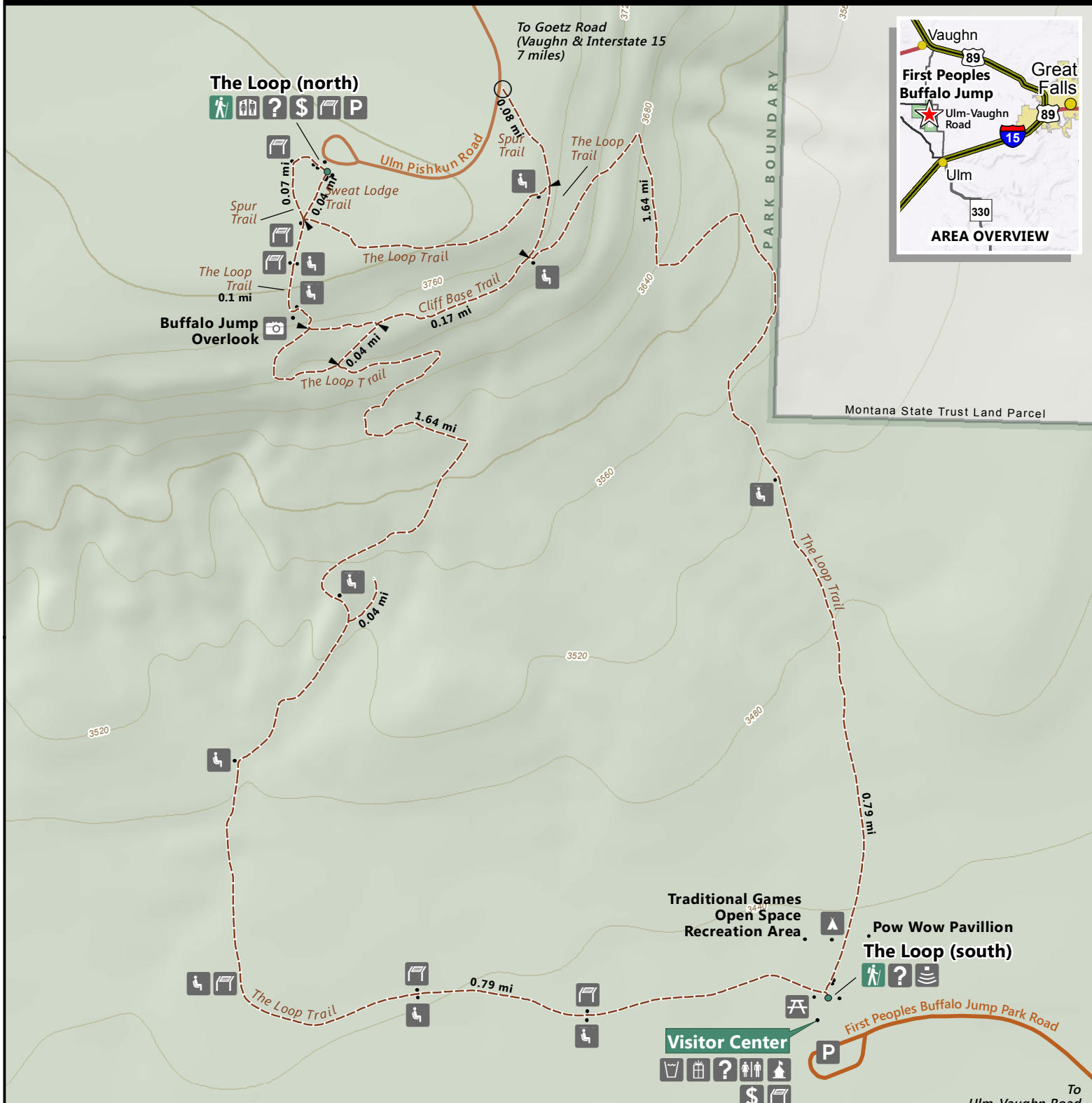
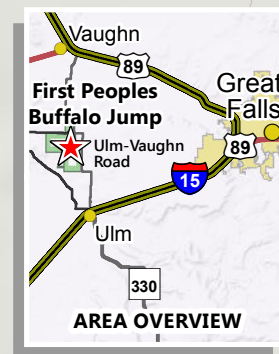
Private Land Parcel

To The Visitor Center Loop Trails (north)



FIRST PEOPLES BUFFALO JUMP STATE PARK | TRAIL MAP

DIVISION OF MONTANA FISH, WILDLIFE & PARKS
STATEPARKS.MT.GOV



	Amphitheater		Parking		Scenic Viewpoint		Trailhead
	Bench		Park Office		Teepee		Trail Access
	Fee Station		Picnic Area		Visitor Information		Trail Intersection
	Gift Shop		Restroom (flush)		Water		
	Interpretive Exhibit		Restroom (vault)				

TRAIL USE

Main Park Road Hiking

PLEASE STAY ON ESTABLISHED TRAILS AND RESPECT OTHER TRAIL USERS
Consult park staff to gather more information on current trail conditions and trail difficulty. Trail lengths are in miles. Elevation levels are in feet. No claims are made to the accuracy of the data or its suitability to a particular use.

