

Addendum #1

Big Springs Trout Hatchery Residence #2035

Date: 6 December 2023
BSPARK Proj. No.: 20011

This Addendum forms a part of the Contract Documents and modifies the original Bidding Documents dated 15 September 2023, as noted below.

A. CHANGES TO PRIOR ADDENDUM

1. *Not applicable.*

B. CHANGES TO BIDDING REQUIREMENTS

1. None

C. CHANGES TO AGREEMENT AND OTHER CONTRACT FORMS:

1. None

D. CHANGES TO THE CONDITIONS OF THE CONTRACT

1. None.

E. CHANGES TO SPECIFICATIONS

1. None

F. CHANGES TO DRAWINGS

1. Light fixtures Basis-of-design added.
2. Plumbing fixture Basis-of-design added.

The following page contains clarification provided at the 11/29 Pre-bid meeting. Follow-up items are noted in the indented italicized text.

Discussion Items

- Excess dirt hauled? No, FWP offers on-site location for disposal
- Geotech - virgin ground versus engineered fill contradiction - to be reviewed.
 - *Update: BSPARK did not see anything contradictory in the report. We have made the geotech engineer aware of this request. He will be available for answering specific questions should they arise. Anyone with questions can contact the architect at meghan@bsparkarch.com for a prompt response on specific geotech inquiries that affect bid.*
- Electrical on site - existing service by Ferguson Electric assumed as adequate. Add new meter base on pole so temp power is available,
- Temp. power - FWP OK to provide on site power, ideally from that new meter base.
- Romax / Electrical; specs - Meet: National Electric code Residential - so no conduit expected
- Lighting Package - Quality and Cost . - base spec - type and style. Establish budget, for example \$5k, and clarify fixture types. \$3k suggested.
 - *Provided in the accompanying pdf.*
- Plumbing fixtures - residential too - establish budget.
 - *Provided in the accompanying pdf.*
- Low voltage - data, co-ax, internet. - Not in scope - resident will deal with cable company.
- Yes to landline connection and outlet.
- Water heater electric or gas? Heat specs - load calcs. - Gas yes // file -
- HVAC / Heat- Refer to A200.
- Staging - site available , main access road to remain open. Coordinate temp closing for septic and water lines with hatchery schedule
- Restrooms: Bring portables.
- Approach permit for new driveway - Bardell (FWP) will apply for this.
- Geotech and structural - issue missing sheets with addendum
 - *This was added to the FWP project bid site 11/30 and is available for download.*

- Septic System permit and code. Price as designed. Architect will verify with County and Civil to see if new code requires any changes, or if old permit can be renewed.
 - *Update: I spoke with Barb Kingery, who provided the septic permit, and she said Fergus county has branched off from the state in terms of reviews and permitting, and since it's over a year old, we will need to re-submit for a septic permit through Fergus county. It should be acceptable to use the same drawings.*

FWP BIG SPRINGS RESIDENCE

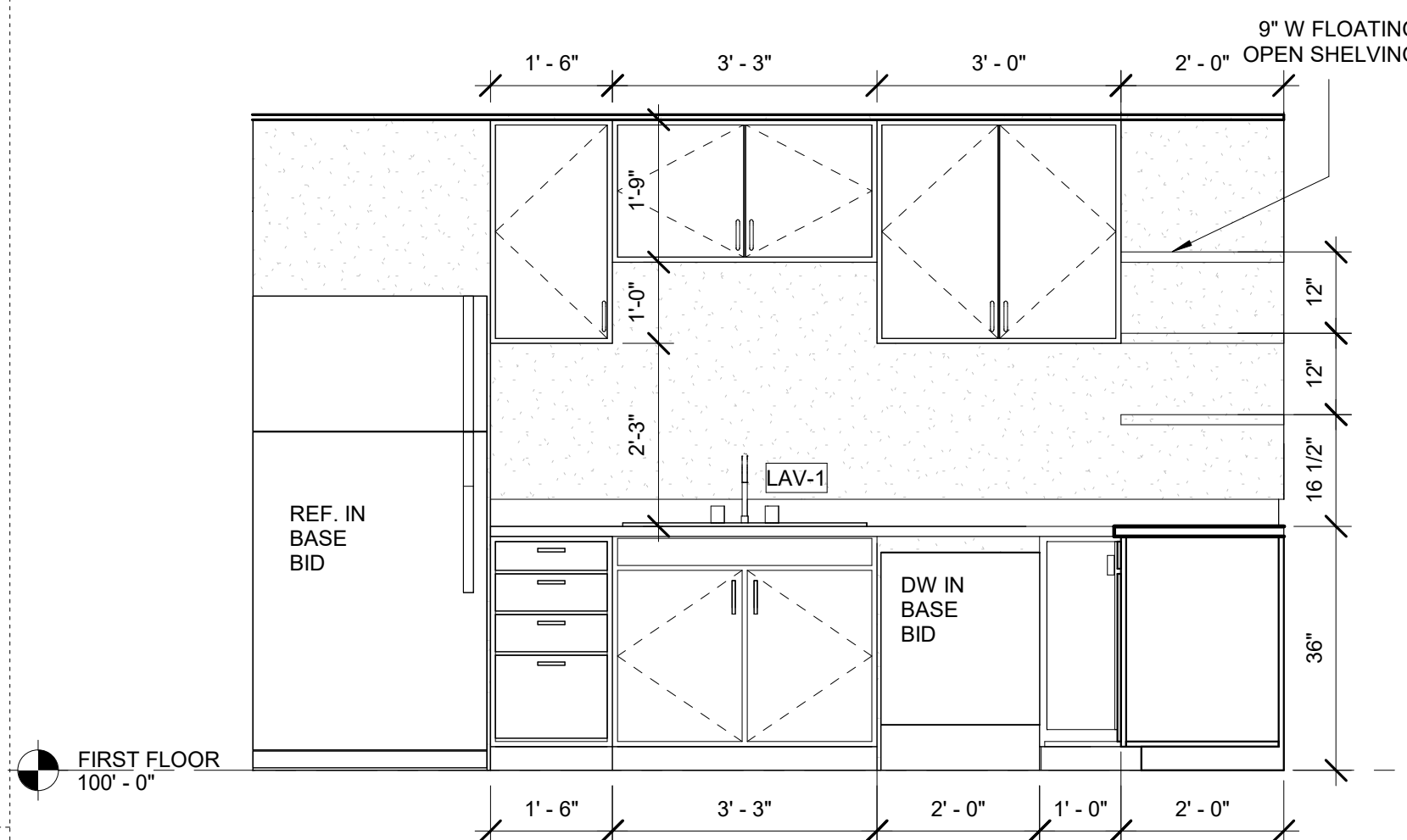
2035 Fish Hatchery Rd
Lewistown, MT 59457
Approver

Δ DATE ISSUANCE
2 2023/09/15 RE-BID
3 2023/12/6 ADDENDUM 1

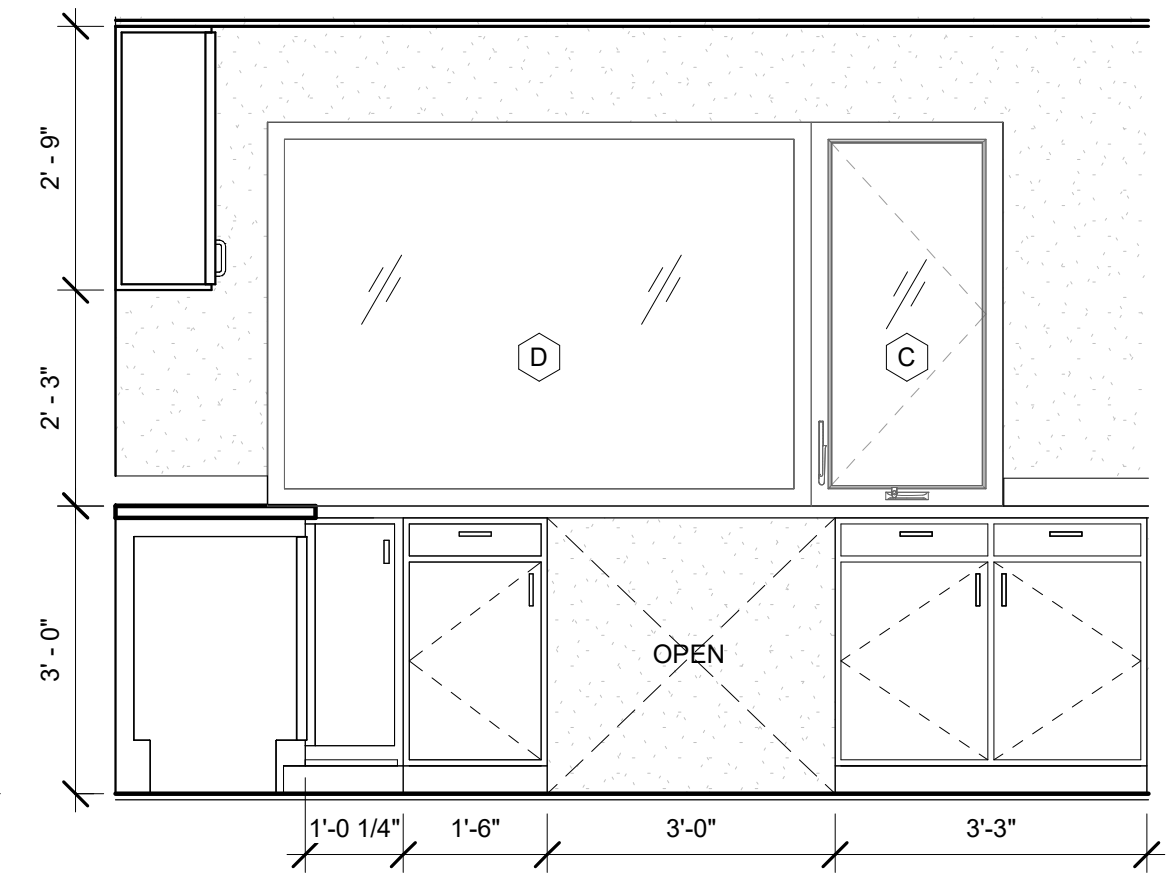
20011

KITCHEN & BATHS

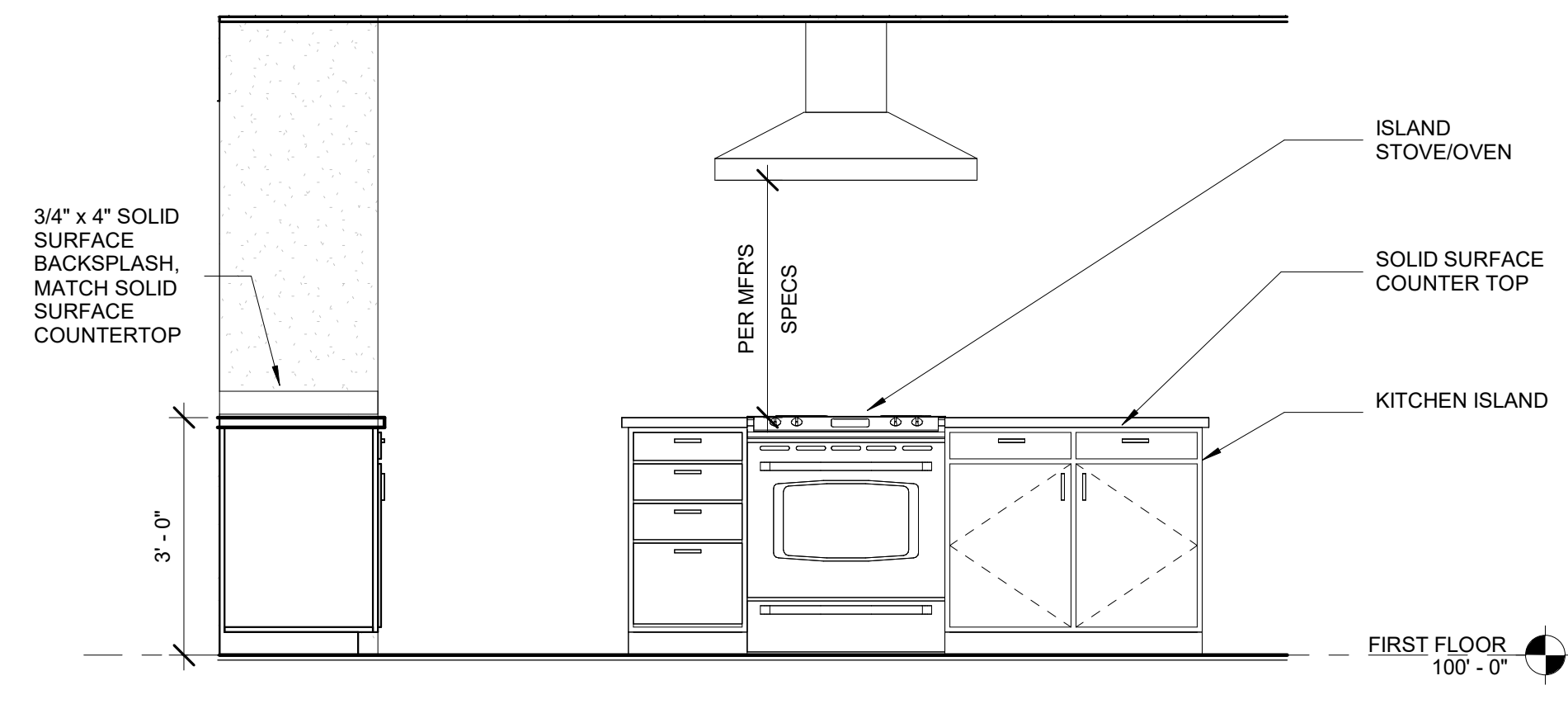
A102



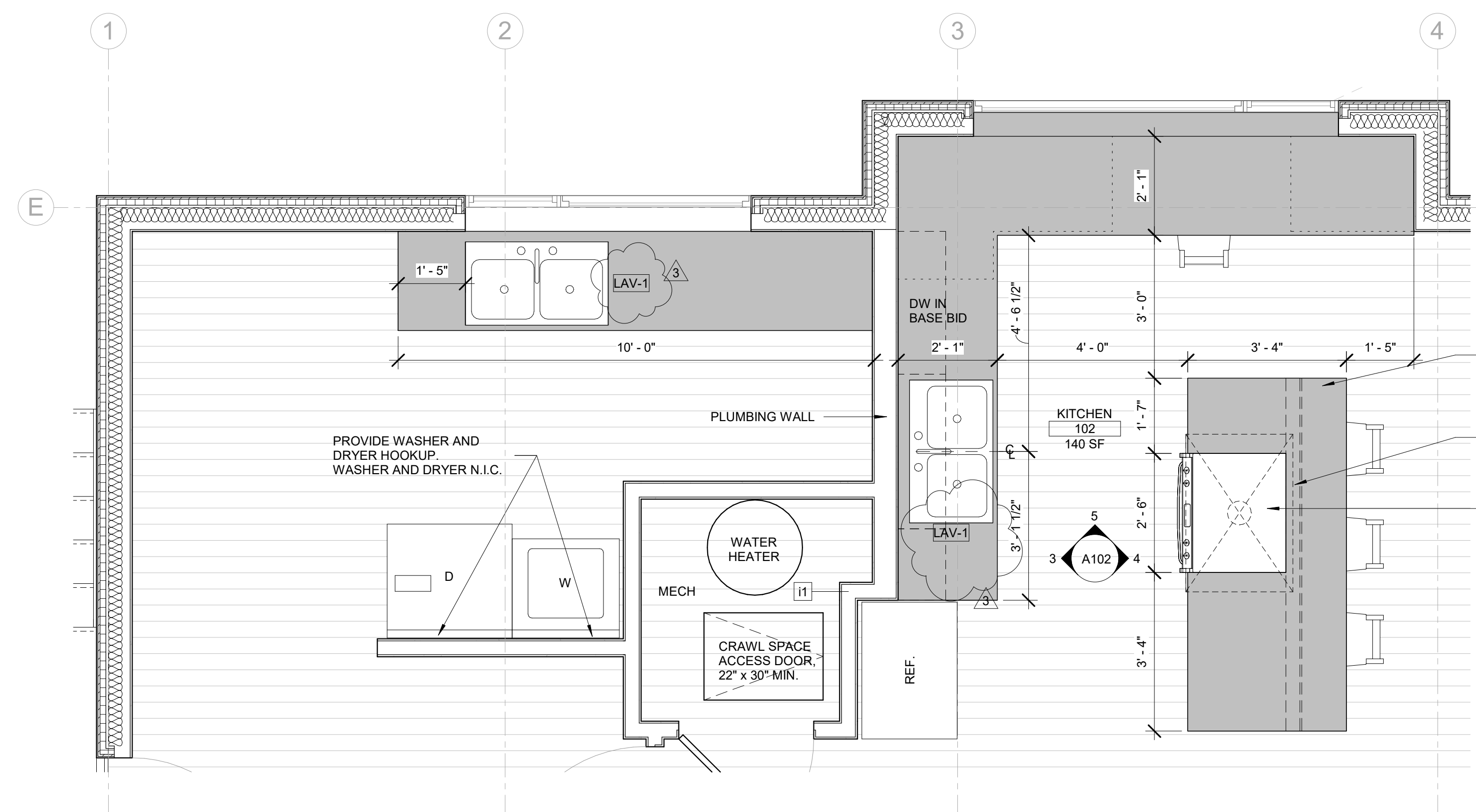
3 KITCHEN - WEST
SCALE: 1/2" = 1'-0"



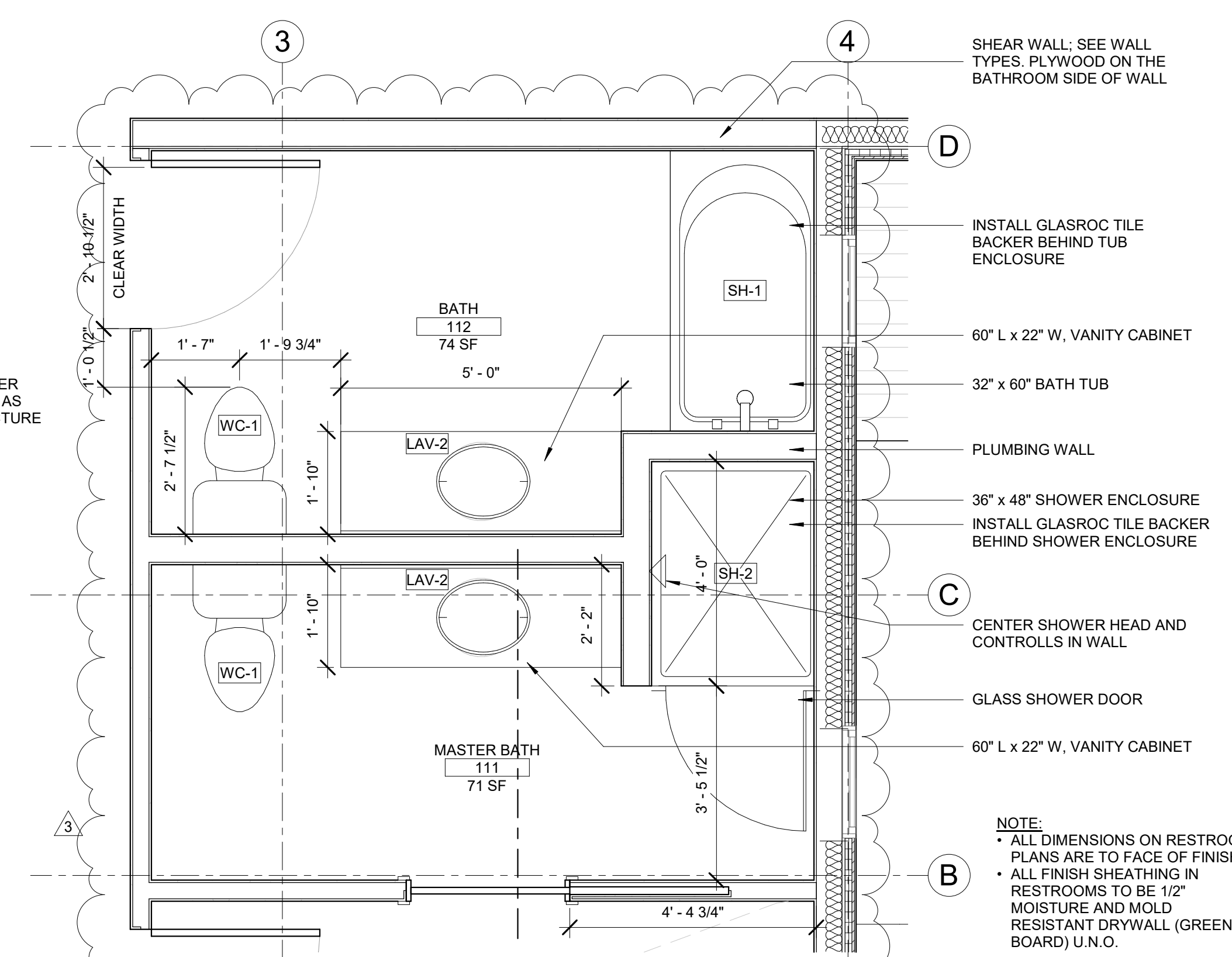
5 KITCHEN - NORTH
SCALE: 1/2" = 1'-0"



4 KITCHEN - EAST
SCALE: 1/2" = 1'-0"



1 CALLOUT - KITCHEN DETAIL
SCALE: 1/2" = 1'-0"



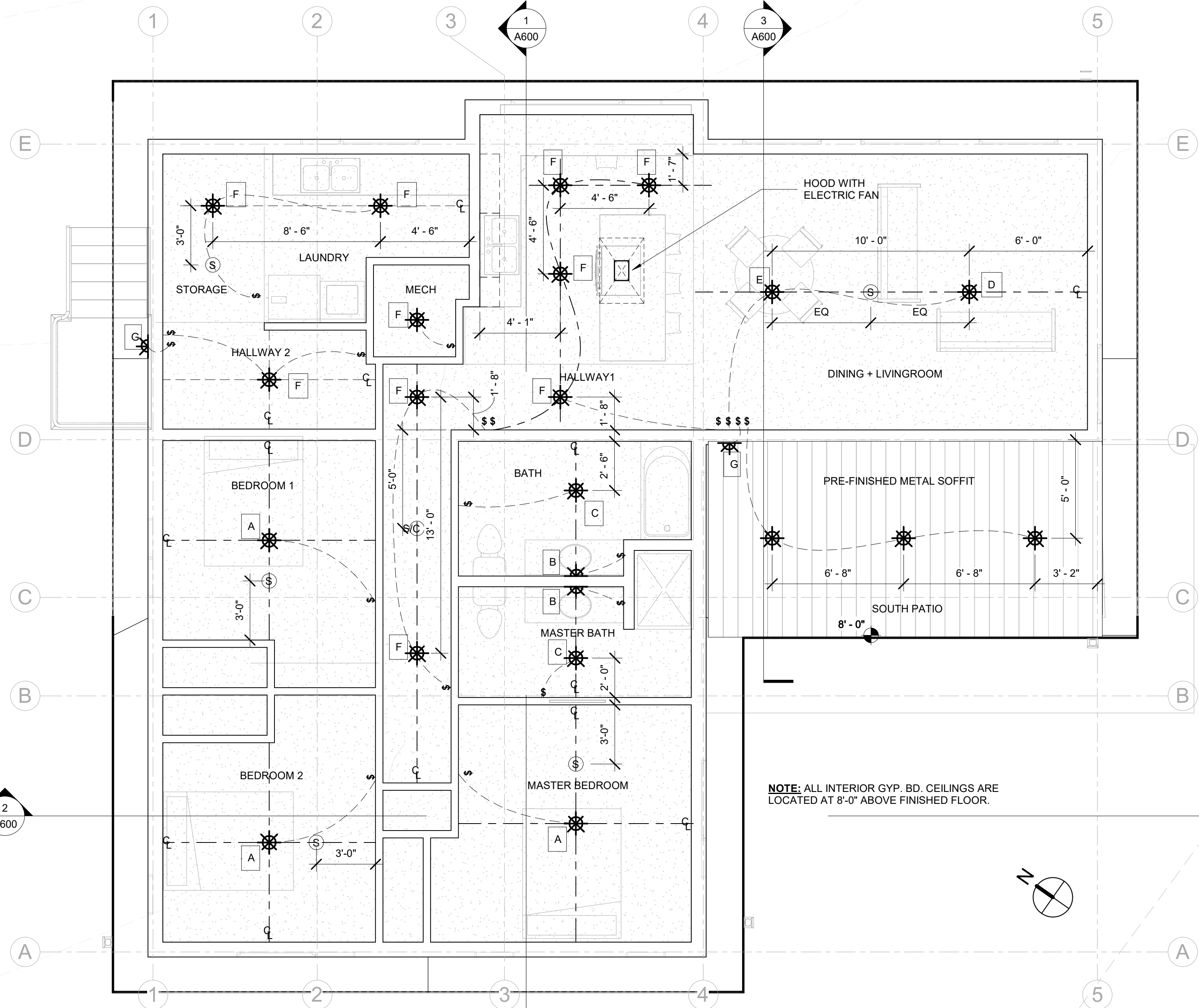
2 CALLOUT - BATHROOM DETAIL
SCALE: 1/2" = 1'-0"

SYMBOL	FIXTURE	MANUFACTURER	FINISH	MODEL #	LOCATION	COST	QUANTITY	LINK
WC-1	Bradenton 1.28 GPF One-Piece Skirted Elongated Toilet - ADA Compliant	SIGNATURE HARDWARE	WHITE	447349	BATHROOMS	509	2	https://www.build.com/signature-hardware-948414-12-1/s1712993?uid=4046013&searchId=I7d67N7V4W
LAV-1	Double Basin Kitchen Sink	AMERICAN STANDARD	STAINLESS STEEL	18DB.9321800T.075	KITCHEN, LAUNDRY	282	2	https://www.build.com/american-standard-18db-9321800/s1299037?uid=3091601&searchId=nQRO4bxGNB
	Single Hole Pull Down Faucet	KOHLER	MATTE BLACK	K-596-VS	KITCHEN, LAUNDRY	283	2	https://www.build.com/kohler-k-596/s563679?uid=1770065&searchId=MvGBAseUIC
LAV-2	Studio Drop-in Bathroom Sink	AMERICAN STANDARD	WHITE	643001.02	BATHROOMS	220	2	https://www.build.com/american-standard-0643-001/s1068446?uid=2575949&searchId=5PKpUzUzC
	1.2 GPM Single Hole Bathroom Faucet	AMERICAN STANDARD	MATTE BLACK	7353101.243	BATHROOMS	245	2	https://www.build.com/american-standard-7353-101/s1236102?uid=4538759&searchId=bYVGMvAJoy
SH-1	New Solar Collection Bathtub 30x60"	AMERICAN STANDARD	WHITE	263112.02	BATHROOMS	446	1	https://www.build.com/american-standard-0263-112/s821115?uid=2114385&searchId=2C6THZ11W
	Studio S Shower System, 24" Height	AMERICAN STANDARD	POLISHED CHROME	S-SV-3.002	BATHROOM	471	1	https://www.build.com/american-standard-studio-s-sv-3/s1708391?uid=4033624&searchId=rqBuhR1VpU
SH-2	Acrylic Backwall Shower Kit	DREAMLINE	WHITE	SHBW-1536760-00	BATHROOM	530	1	https://www.build.com/dreamline-shbw-1536760-00/s1832604?uid=4345973&searchId=uxPnT04AKB
	Frameless Pivot Shower Door	DREAMLINE	SATIN BLACK	SDAD345720VXX09	BATHROOM	630	1	https://www.build.com/dreamline-sdad345720vxx/s1824873?uid=4330858&searchId=5JToId6HX
	Studio S Shower System, 24" Height	AMERICAN STANDARD	POLISHED CHROME	S-SV-3.002	BATHROOM	471	1	https://www.build.com/american-standard-studio-s-sv-3/s1708391?uid=4033624&searchId=rqBuhR1VpU

12/7/2023 2:12:34 PM

ELECTRICAL GENERAL NOTES:

- GENERAL: UNLESS SPECIFICALLY INDICATED OTHERWISE, ALL WORK SHOWN ON THE ELECTRICAL DRAWINGS IS NEW WORK TO BE PROVIDED UNDER THIS CONTRACT.
- COORDINATION: COORDINATE AND COOPERATE WITH ALL TRADES ON THE PROJECT.
- RECORD DRAWINGS: SECURE AN EXTRA SET OF ELECTRICAL DRAWINGS TO BE KEPT ON SITE AND MARK, DAILY, THE DRAWINGS IN RED AS THE PROJECT PROGRESSES IN ORDER TO KEEP AN ACCURATE RECORD OF ALL DEVIATIONS BETWEEN THE WORK SHOWN ON THE DRAWINGS AND THE WORK WHICH IS ACTUALLY INSTALLED. THESE MARKED DRAWINGS SHALL REFLECT ANY AND ALL CHANGES AND REVISIONS TO THE ORIGINAL DESIGN WHICH EXISTS IN THE COMPLETED WORK. DELIVER THE MARKED DRAWINGS TO THE ARCHITECT OF RECORD AT PROJECT CLOSE-OUT.
- TESTS: TEST ALL WIRING FOR CONTINUITY AND GROUNDS BEFORE CONNECTING ANY FIXTURES OR DEVICES. PERFORM INSULATION RESISTANCE TESTS ON ALL WIRING #8 OR LARGER TO ENSURE THAT ALL PORTIONS ARE FREE FROM SHORT-CIRCUITS AND GROUNDS.
- INSPECTIONS: ARRANGE ALL NECESSARY INSPECTIONS. DELIVER ALL REQUIRED INSPECTION CERTIFICATES TO THE OWNER.
- GROUNDING: PROVIDE GROUNDING IN ACCORDANCE WITH THE NEC FOR THE ELECTRICAL SYSTEM INCLUDING EQUIPMENT FRAMES CONDUITS, SWITCHES, CONTROLLERS, WIRE-WAYS, NEUTRAL CONDUCTORS, AND OTHER EQUIPMENT. PROVIDE A GROUNDING CONDUCTOR IN ALL POWER CIRCUITS.
- LABELS: PROVIDE LABELS FOR ALL PANELBOARDS, CABINETS, SAFETY SWITCHES, MOTOR-DISCONNECT SWITCHES, AND MOTOR CONTROLLERS. LABELS SHALL BE MACHINE ENGRAVED, LAMINATED PLASTIC, PERMANENTLY ATTACHED WITH SELF-TAPPING SCREWS OR RIVETS, DO NOT USE SELF-ADHESIVE LABELS. J-BOX LABELING: LABEL ALL JUNCTION BOXES WITH PERMANENT MARKER IDENTIFYING CIRCUIT NUMBER AND PANELBOARD OF CIRCUITS WITHIN.
- PANEL DIRECTORY: PROVIDE TYPEWRITTEN PANELBOARD DIRECTORY CARD IN EACH PANELBOARD INCLUDING EXISTING PANELBOARDS MODIFIED FOR THIS PROJECT WITH CIRCUIT LOAD INFORMATION AND ROOM NUMBER CLEARLY IDENTIFIED.
- MOTOR COORDINATION: MOTORS, MOTOR STARTERS, CONTROLLERS, INTEGRAL DISCONNECT SWITCHES, AND CONTACTORS SHALL BE PROVIDED WITH THEIR RESPECTIVE PIECES OF EQUIPMENT BY THE EQUIPMENT SUPPLIER. COMMUNICATE WITH THE TRADES PROVIDING THE EQUIPMENT, VERIFYING ALL REQUIREMENTS. PROVIDE ALL ELECTRICAL CONNECTIONS REQUIRED THEREIN, AND INSTALL MOTOR STARTERS.
- MOTOR DISCONNECTS: ALL MOTORS SHALL HAVE DISCONNECTING MEANS. MOTOR FUSE PROTECTION: WHERE FUSE PROTECTION IS SPECIFICALLY REQUIRED BY THE EQUIPMENT MANUFACTURER, PROVIDE FUSE SWITCHES IN LIEU OF NON-FUSE SWITCHES OR IN LIEU OF ENCLOSED CIRCUIT BREAKERS, OR OTHER DEVICES INDICATED.
- CONNECTION DETAILS: SECURE APPROVED SHOP DRAWINGS SHOWING WIRING DIAGRAMS, ROUGH-IN AND HOOK UP DETAILS FROM OTHER INVOLVED CONTRACTORS FOR EQUIPMENT WHICH MUST BE CONNECTED ELECTRICALLY.
- EQUIPMENT DETAILS: MECHANICAL EQUIPMENT WILL BE FURNISHED AND INSTALLED BY THE MECHANICAL CONTRACTOR. THE LOCATIONS SHOWN ON THE ELECTRICAL DRAWINGS ARE APPROXIMATE. COORDINATE WITH THE MECHANICAL CONTRACTOR TO DETERMINE THE EXACT LOCATION OF EACH PIECE OF EQUIPMENT AND DETERMINE THE EXACT ROUGH-IN AND CONNECTION REQUIREMENTS.
- STARTER MOUNTING: WHERE AN INDIVIDUALLY MOUNTED SAFETY SWITCH, STARTER OR CIRCUIT BREAKER IS SHOWN ADJACENT TO ITS RESPECTIVE LOAD AND NOT MOUNTED ON A WALL, PROVIDE ALL SUPPORTS, BRACKETS, ANCHORING, ETC. NECESSARY TO PROPERLY SUPPORT THE DEVICE. FIRE PROOFING: FOR ANY WALL OR FLOOR PENETRATIONS THROUGH FIRE RATED STRUCTURES PROVIDE FIRE-PROOFING TO SEAL ALL THE PENETRATIONS AFTER THE CONDUIT HAS BEEN INSTALLED. FIRE PROOFING FOR PENETRATIONS SHALL BE UL APPROVED PER THE PENETRATION MADE IN ORDER TO MAINTAIN FIRE RATED INTEGRITY OF THE STRUCTURE. CLEAN UP: ON PROJECT CLOSE-OUT, CLEAN ALL ELECTRICAL DEVICES, LIGHTING FIXTURES, LAMPS AND LENSES, AND REMOVE ALL PAINT SPATTERS FROM DEVICES, FIXTURES, AND PLATES. REPLACE ALL INOPERATIVE LAMPS.
- OWNER FURNISHED EQUIPMENT: CONTRACTOR SHALL OBTAIN CUT SHEETS, INSTALLATION DATA, AND ROUGH-IN REQUIREMENTS FOR OWNER FURNISHED, CONTRACTOR INSTALLED EQUIPMENT AND COORDINATE ROUGH-IN AND POWER REQUIREMENTS WITH THE OWNER'S REPRESENTATIVE PRIOR TO STARTING ANY ASSOCIATED WORK.
- CONDUIT ROUTING: ALL CONDUIT RUN OVERHEAD SHALL BE RUN AT THE BOTTOM OF THE FLOOR, ROOF STRUCTURE, OR LOWEST CHORD OF JOIST SPACE (AS APPLICABLE) ABOVE IN ORDER TO AVOID CONFLICTS WITH OTHER TRADES.
- EQUIPMENT DEMONSTRATION: PROVIDE A DEMONSTRATION OF THE OPERATION OF ALL ELECTRICAL WORK.
- MECHANICAL EQUIPMENT ELECTRICAL CONNECTIONS: THE ELECTRICAL CONTRACTOR SHALL FURNISH, INSTALL AND CONNECT ALL POWER WIRING TO ALL MECHANICAL CONTRACTOR FURNISHED EQUIPMENT. THE MECHANICAL CONTRACTOR SHALL FURNISH, INSTALL AND CONNECT ALL CONTROL WIRING TO ALL FURNISHED EQUIPMENT, INCLUDING CONTROL DEVICES, STARTER, AND INTEGRAL DISCONNECT SWITCHES OF MECHANICAL CONTRACTOR FURNISHED EQUIPMENT.
- SMOKE ALARMS SHALL BE INSTALLED IN ACCORDANCE WITH R314.
- CARBON MONOXIDE ALARMS SHALL BE INSTALLED IN ACCORDANCE WITH R315.



1 FIRST FLOOR REFLECTED CEILING PLAN
SCALE: 1/4" = 1'-0"

SYMBOL	FIXTURE	MANUFACTURER	FINISH	MODEL #	LOCATION	COST	QUANTITY	LINK
A	Georgetown 52" 6 Blade Indoor LED Ceiling Fan	HUNTER	MATTE BLACK	51879	BEDROOMS	220	3	https://www.build.com/hunter-georgetown-52-led/s1896637?uid=4481211
B	Spec 30" Wide LED Bath Bar	MAXIM	BLACK	52004SN	BATHROOM VANITIES	108	2	https://www.build.com/maxim-52004/s1511391?uid=4163546
C	80 CFM 2.5 Sone Ceiling Mounted Fan with Light	BROAN	WHITE	HD80L	BATHROOM OVERALL	72	2	https://www.build.com/broan-hd80/s542779?uid=417611&searchId=6vgdy68c9
D	Clermont 3 Light 18" Wide Semi-Flush Drum	ROSETO	EARTH BLACK	MVCF4143ETBLK	LIVING	238	1	https://www.build.com/roseto-qzcl4143/s1680543?uid=4222273&searchId=FZQoJCLZ9X
E	Crosby 5 Light 26" Wide Chandelier	KICHLER	BLACK	43999BK	DINING	350	1	https://www.build.com/kichler-43999/s1274474?uid=4002522&searchId=FiRwDUan0i
F	6" Recessed Can Light	CONTRACTOR CHOSEN	WHITE		HALL, KITCHEN, MECH, ETC.	50	9	ELECTRICIAN'S CHOICE, USE STANDARD BULB
G	Pier M Single Light 10-3/4" Outdoor Wall Sconce	MAXIM	BLACK	35015BK	OUTDOOR WALLS	88	2	https://www.build.com/maxim-35015/s14435507?uid=3398741&searchId=DkrurNPlvX

LIGHTING FIXTURES
NOT TO SCALE

CEILING FINISH LEGEND

- PAINTED GYPSUM BOARD CEILING
 - PRE FINISHED METAL SOFFIT, WHITE
 - HARD-WIRE SMOKE ALARM
 - HARD-WIRE FIRE ALARM / CARBON MONOXIDE DETECTOR
 - PROVIDE JUNCTION BOX FOR ELECTRICAL CONNECTION
 - NEW LIGHT FIXTURE
 - NEW EXTERIOR RATED, WALL MOUNTED LIGHT FIXTURE
- NOTE:
1) IN RESTROOMS, AND MECHANICAL ROOM USE A MOLD RESISTANT GYP BOARD, (GLASROC TILE BACKER).

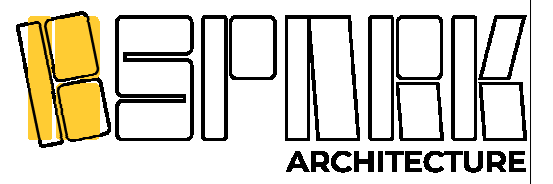
GENERAL NOTES - CEILING PLAN

- CEILING HEIGHTS ARE FROM FINISHED FLOOR TO FINISHED SURFACE OF CEILING
- CEILING HEIGHTS ARE MEASURED ABOVE FLOOR OF ROOM THEY ARE IN
- ALL CEILINGS ON FIRST FLOOR ARE TO BE TAPED, TEXTURED, AND PAINTED
- NO CEILINGS IN THE BASEMENT SHALL BE INCLUDED IN THE BASE BID U.N.O.

HVAC AND WATER FILTRATION:

HVAC: PROVIDE AND INSTALL A HIGH-EFFICIENCY CONDENSING FORCED-AIR GAS FURNACE, INSTALLED IN THE CRAWLSPACE WITH SUPPLY DUCTWORK DISTRIBUTED THROUGH CRAWLSPACE. PROVIDE IN-WALL RETURN AIR AND FILTER AT MAIN FLOOR FOR EASE OF FILTER CHANGE. SIZE SYSTEM IN ACCORDANCE WITH CURRENT ENERGY CODE REQUIREMENTS, AND SUBMIT SHOP DRAWINGS FOR REVIEW.

WATER FILTRATION: PROVIDE AND INSTALL NEW WATER FILTRATION SYSTEM FOR THE RESIDENCE - INCLUDING PURCHASE AND INSTALLATION BY CONTRACTOR:
1. -2 CULLIGAN STANDARD DUTY WHOLE HOUSE FILTERS, (CLEAR PLASTIC TO MONITOR FILTER LIFE).
1. 1st FILTER IN LINE IS A COARSE FILTER @ 20 MICRONS.
2. 2nd FILTER IN LINE IS A FINE FILTER @ 5 MICRONS.



BSPARK Architecture
410 Central Ave #506
GREAT FALLS, MT 59401
T: 406.453.0001
BSPARKarch.com

FWP BIG SPRINGS RESIDENCE

2035 Fish Hatchery Rd
Lewistown, MT 59457

Δ DATE	ISSUANCE
2 2023/09/15	RE-BID
3 2023/12/6	ADDENDUM 1

20011

REF. CEILING PLAN
A200