



Region 7

Citizen's Advisory Council Meeting

Upland Game Bird Enhancement Program

Fall 2022



Region 7 Strategic Plan

- Strategies targeted all species
- Three main areas of focus include
 - Sage Grouse Core Areas (Region 7 is home to two)
 - Grasslands and Sagebrush Grasslands
 - Priority Counties (Richland, Dawson, Wibaux, Fallon & Prairie)



Sage Grouse Core Areas

- Located primarily in Carter & Rosebud Counties
- Goal: Conserve and enhance sagebrush and sagebrush grasslands
- Accomplish goal by:
 - Sagebrush Leases and Grazing Systems
 - Work with landowners within program on further enhancement
 - Work with other partners to preserve and protect sagebrush habitats



Grasslands and Sagebrush Grasslands

- Goal: Develop and maintain grazing management projects to improve and/or maintain productive nesting and brood rearing cover. Enhance or provide critical winter habitat.
- Accomplish goal by:
 - Working to implement grazing systems to enhance nesting and winter cover
 - Develop shelterbelt project to increase winter cover and food resources.



Priority Counties Richland, Dawson, Wibaux, Fallon & Prairie

- Goal: Maintain productive nesting cover while also providing critical winter habitat and expanded hunting opportunities. Where appropriate, improve winter food source availability.
- Accomplish goal by:
 - Identify areas with productive CRP plantings and market add-on rental payments as incentive for re-enrollment. (Open Fields)
 - Identify potential sites for critical winter cover plantings such as abandoned homesteads, old shelterbelts, or idle ground, and work with landowners to determine interest and negotiate projects.



Additional Goals

- Renew expiring contracts and implement additional habitat enhancements
- Encourage maintenance and enhancement to turkey habitats
- All goals are accomplished with variety of habitat enhancement projects in UGBEP toolbox



Spring 2022 Contracting

- Completed 26 new contracts
- Many contracts contained multiple practices
- Diverse range of project types
- New cooperators & old cooperators
- Private lands, DNRC lands, BLM lands & Block Management Areas



Food Plots

Region 7 Diverse Mix Food Plots

- 5 Contracts
- 110 acres contracted
- 10,384 access acres
- BMA's & WMA's

Standing Grain Winter Food/Cover Plots

- 6 Contracts
- 190 acres contracted
- 11,392 access acres
- BMA's & BLM





Habitat Management Leases

UGBEP Funding

- 3 contracts
- 243 habitat acres
- 1,126 access acres
- 3-5 year contracts
- BMA & DNRC

VPA-HIP Funding

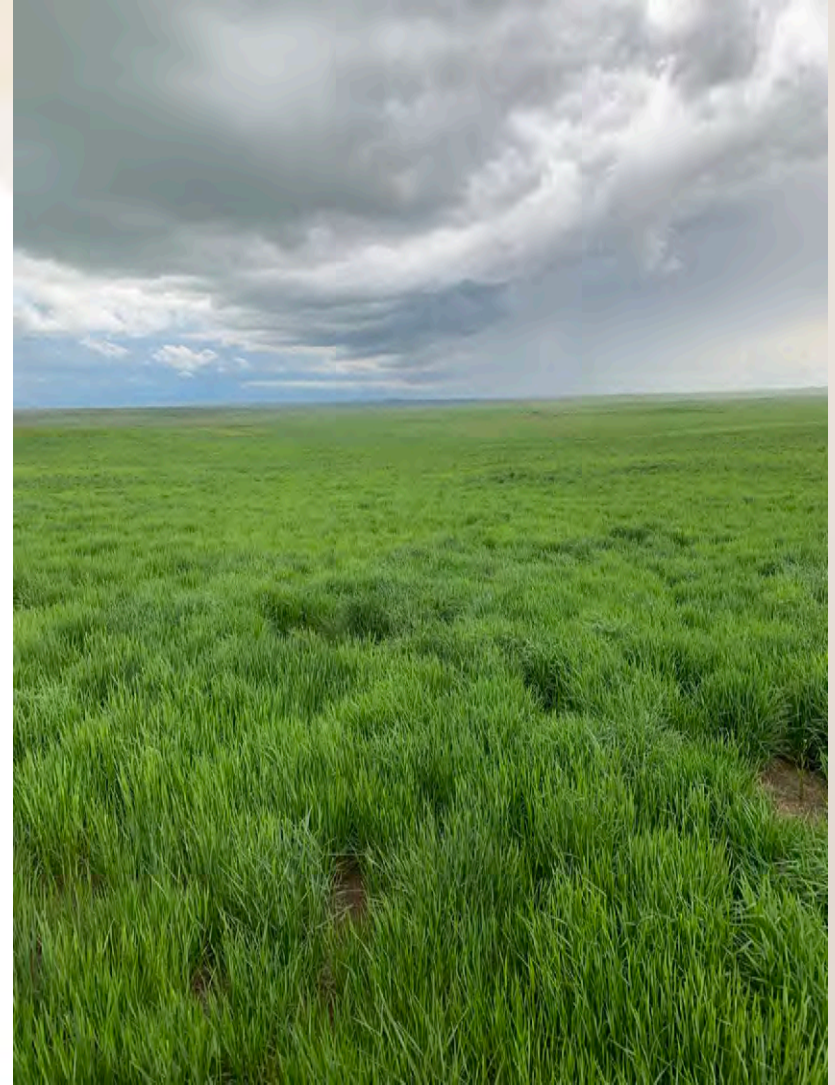
- 6 contracts
- 718 habitat acres
- 2,207 access acres
- 3-10 year contracts
- New cooperators!





Interseeding Forbs & Legumes Project

- 1 contracts
- 320 habitat acres
- 9,292 access areas
- Angela Farm- DNRC State Lands





Wildlife Friendly Haying

- 2 contracts
- 546 habitat acres
- 1,280 access acres
- DNRC state section & BMA



Open Fields

- 5 contracts
- 1,337 CRP acres
- 2,337 Total access acres

- Program has a potential to take off if we could see a better CRP enrollment.
- Lots of sprayed out CRP on landscape.



Future Habitat Projects

- Diverse Mix Plots
- Shelterbelts- Lots of interest
- Nesting Cover-CRP
- HML's- Lots of interest and potential projects in works
- Work on project renewals and further enhancement



Current Habitat Conditions



Hunting Outlook



