

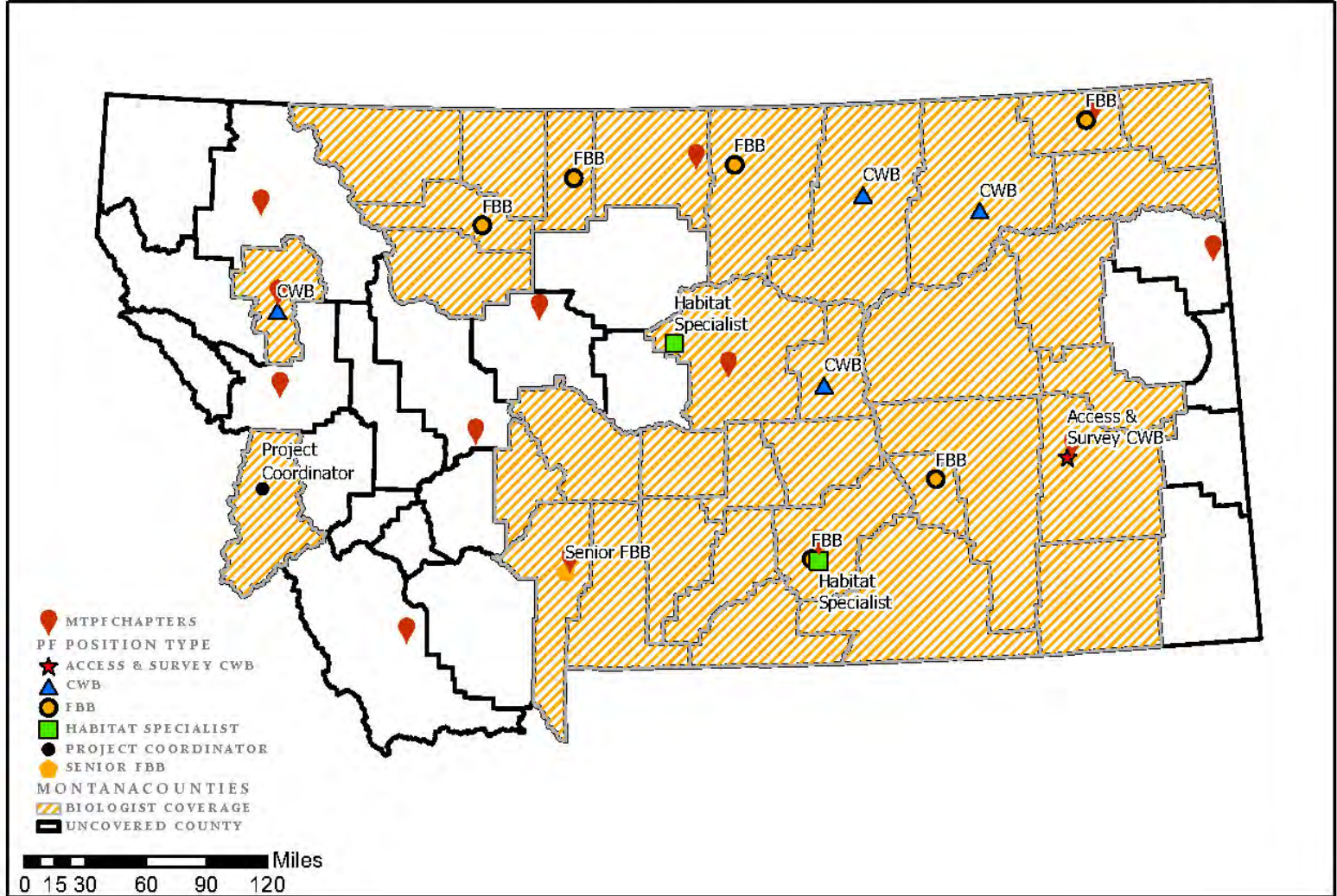
# Pheasants Forever Montana



# CURRENT STATUS OF PHEASANTS FOREVER IN MONTANA

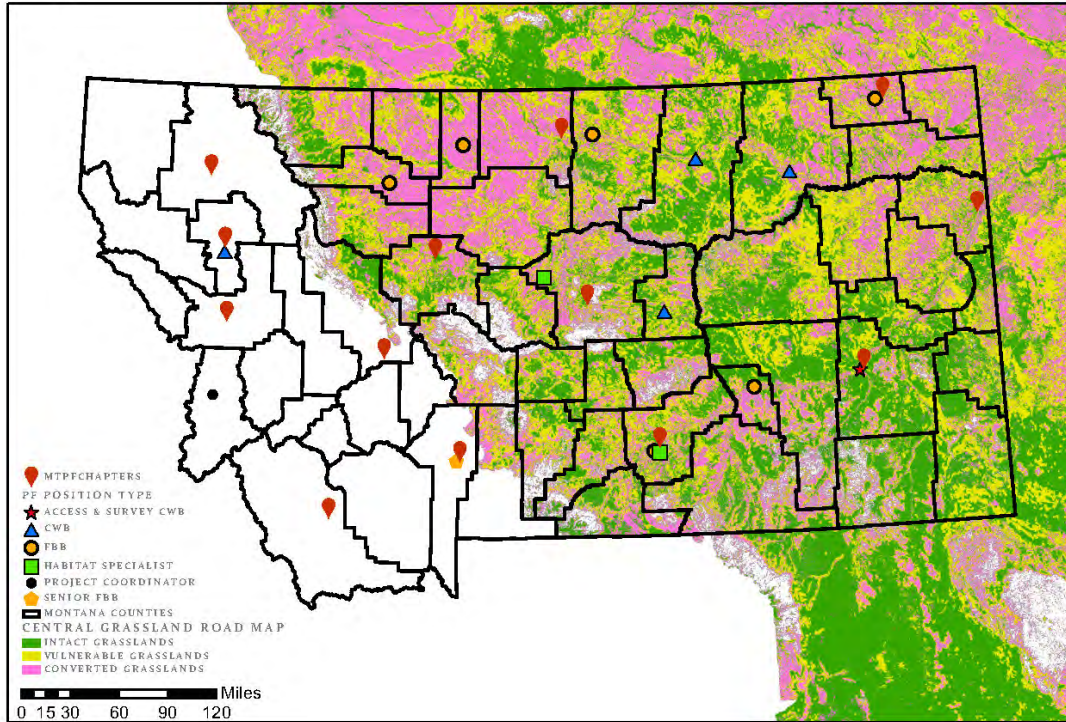


Pheasants Forever in Montana

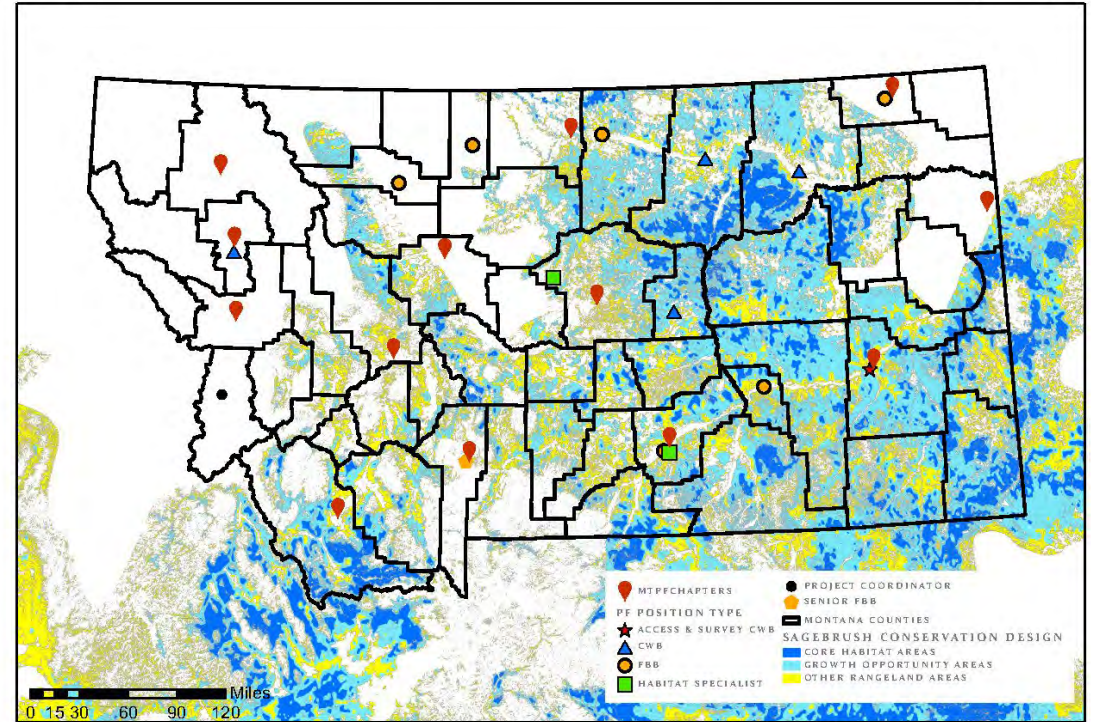




## MONTANA PHEASANTS FOREVER HABITAT FOCAL AREAS - GRASSLANDS



## MONTANA PHEASANTS FOREVER HABITAT FOCAL AREAS - SAGEBRUSH STEPPE



# Montana Pheasants Forever Priorities- Grasslands

# Pheasants Forever Montana Grassland-Strategy

---

- Utilize the best available science to guide our efforts.
- Anchor Intact Grasslands through:
  - Grazing systems, term protection agreements, grazing technical advice, easements, wildlife friendly fencing options, sustainable grazing techniques.
- Address Vulnerable/Degraded Grasslands through:
  - Grazing systems, term protection agreements/easements, wildlife friendly fencing, mesic restoration projects, invasive treatment projects, conifer removal, native species restoration, CRP re-enrollment, CRP transition to grazing systems.
- Restore Converted/Altered Grasslands through:
  - Grass seeding projects, conifer removal, invasive treatment projects, enrolling new CRP acres, incentivizing grass-based agriculture.
- Increase Public Access through:
  - Relationship building with landowners and partners in key communities, adding capacity to deliver access easements and agreements to land-locked public land, incentivizing private land access programs, and addressing access concerns from landowners.



# Montana Pheasants Forever and UGBEP

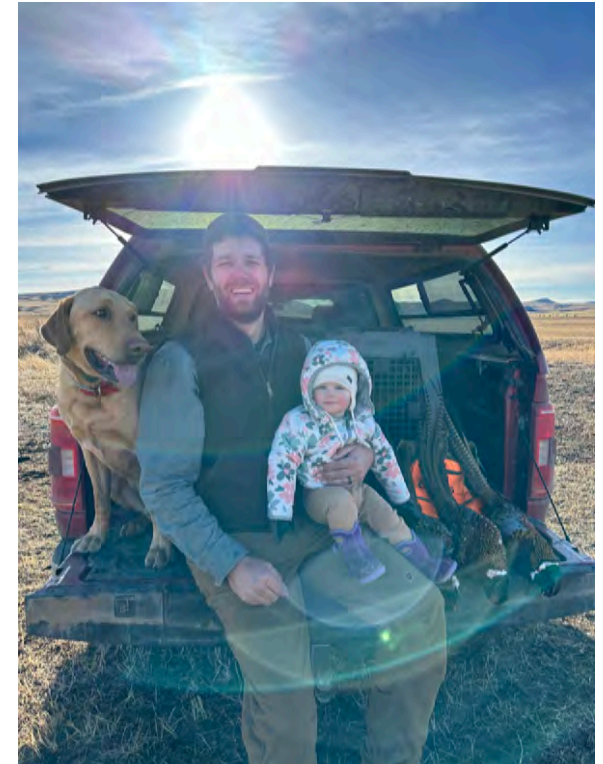
---

- Montana PF Team provides outreach, education, and capacity for UGBEP and other MT FWP programs.
- Farm Bill Biologists- Connect UGBEP to the power of the farm bill, have strong connections to area landowners, refer and connect landowners to UGBEP programs.
- Habitat Specialists- implement upland game bird projects on WMA's, PF Properties, and other public lands.
- Coordinating Wildlife Biologists- Coordinate specific efforts with local partners on private and public land. Typically centered around grasslands/sagebrush conservation.



# Hunter VanDonsel

- MT-WY State Coordinator since September 2022.
- Started as a Farm Bill Biologist in Chinook, MT in 2017.
- Located in Havre, MT.



# Sara Pearce



## Senior Farm Bill Biologist

- Originally from Arizona
- Previously worked for TNC, NWTF
- Graduated from the University of Hawaii
  - Seabirds and snails!

# Sara Pearce

---

- NRCS Bozeman Area Office
  - Work within FWP region 3 and across 14 counties in south central Montana
- Projects
  - Offer technical assistance to private landowners and NRCS staff on EQIP, CRP, SGI programs





# Stephanie Berry



# Stephanie Berry

---



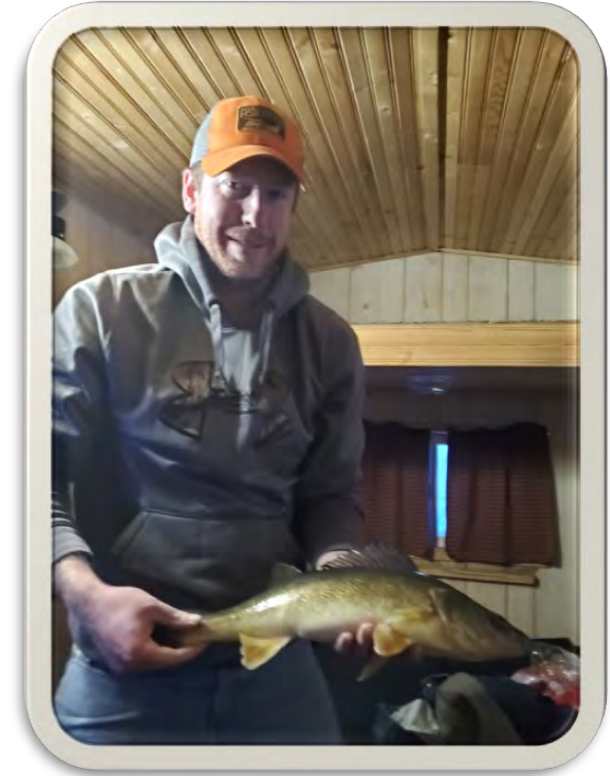
- **NRCS** – Daniels, Roosevelt, Sheridan counties
  - CRP
  - EQIP
    - Crop to Perennial Vegetation TIP & Taking Soil Health to the Next Level TIP
    - In development: expand Habitat Improvement Plan (HIP) TIP across Daniels County, portable windbreak TIP, tree planting & restoration in Roosevelt County
- **Partner Projects**
  - Grassland Retention Team – targeting expiring/recently expired CRP

# Shaun McCabe

Farm Bill Biologist II-Chinook, MT (Blaine and Hill Counties)

- Originally from Minnesota
- Went to school in Ashland, WI (South shore of Lake Superior)
- Passionate about fishing, hunting, camping
- Split time as a Fisheries and Wildlife Technician
  - Fish hatchery work, primarily Salmonids (WI DNR, U.S. Fish & Wildlife Service)
  - Stream and lake shocking surveys, snorkel surveys (U.S. Forest Service)
  - Sea lamprey work (GLIFWC)
  - Non-game species surveys; Herptiles, Raptors, Songbirds (WI DNR)
  - Invasive species control, Timber Stand Improvement-TSI, Prairie Restoration (WI DNR)
  - Sage Grouse lek surveys, Sharp-tailed Grouse lek surveys

(private consulting firm)



# Shaun McCabe

## Farm Bill Biologist II-Chinook, MT

### Prorities

- Keep expiring/expired CRP in grass through NRCS and partner programs
- Maintain and expand existing core grasslands

### Current Projects

- RCPP BIG HIP
  - Working in Coordination with the BLM to remove and replace approximately 10.4 miles of woven wire fence to improve big game migration
- Golden Triangle TIP
  - Adding grazing infrastructure to expired CRP thereby preventing conversion in the Golden Triangle region.
  - Approximately 1,017 acres of grazing land will be put into the program, reducing the risk of converting grasslands into commodity crops
- Partner Projects
  - Referred producers to the Montana FWP upland bird program
  - Working in conjunction with Rancher's Stewardship Alliance and U.S. Fish and Wildlife Service (Partner's for Wildlife) on Re-seeding projects, adaptive grazing to improve grassland health
  - Contributing to the Montana Grassland's Partnership. Reaching out to land-owners with Expiring/Expired CRP. Asking them what they need to keep their pastures intact (primarily grazing infrastructure)

# Cole Stumpf

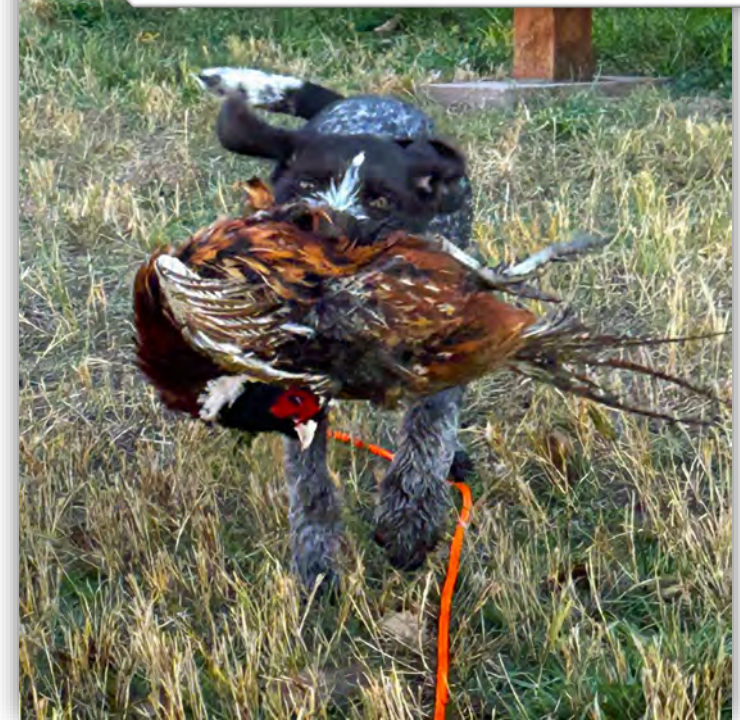
Farm Bill Biologist II- Hysham, MT.

## Background:

- Grew up on the Western Slope of Colorado.
- Moved to Montana for College
  - \* Graduated from Montana State University in 2021
- I started in this position in January of 2022

## Hobbies:

- Shoeing Horses
- Rookie dog trainer
  - > Gus, 7-month-old German Wirehair Pointer



# Cole Stumpf

Farm Bill Biologist II- Hysham, MT.

---

## Work Priorities:

- **NRCS:** Current Targeted Implementation Plans (4), with 2 having wildlife aspects.
  - > Lower Bighorn Wildfire Risk Reduction
  - > Rooting for Soil Health
  - > EQIP- Sage Grouse Initiative
- **PF and Partner Projects:**
  - > Reseeding existing marginal farm ground to perennial grass.
  - > Invasive annual grass control in core sage grouse habitat.

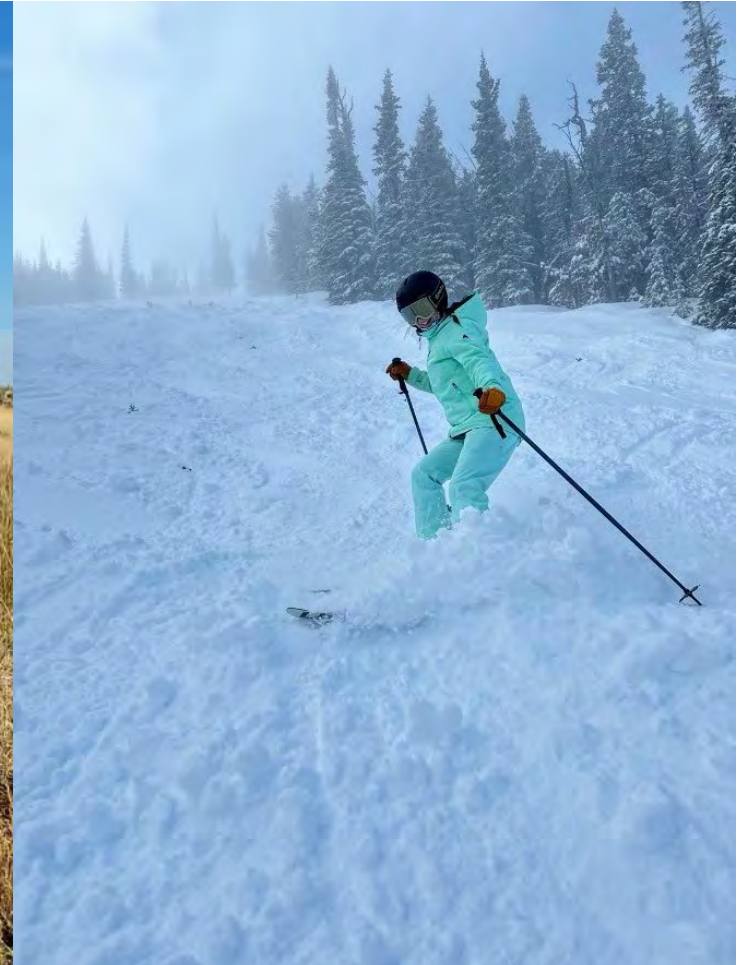


# Crystallina White

Farm Bill Biologist III

Billings, Montana

- Born and raised in MT
- Attended Rocky Mountain College
- Researched native turtles in MT prairie ecosystems, CWD testing for FWP
- Hobbies include backpacking, skiing, and flyfishing





---

# Crystallina White

- **Work priorities**
  - NRCS- TIP Corners and Borders for Pollinators
  - EQIP – SGI
  - CRP and Open Fields
- **Projects**
  - Monitoring efforts at Pompeys Pillar for pollinators
  - Reseeding project at Dover Park to native grasses and forbs