



# MONTANA FISH, WILDLIFE & PARKS

## Attention Region 1 Bear Hunters

### Hunters who harvest a black bear in Region 1 (northwest Montana):

- Are NOT REQUIRED to have a harvested bear (hide and skull) inspected and tagged by FWP staff
- Are REQUIRED to call in the harvest to the FWP reporting line within 48 HOURS or report online:
  - 1-877-FWP-WILD or 1-877-397-9453, or
  - Log into the MyFWP webpage -> Mandatory Reporting
- Are REQUIRED to submit TWO premolar teeth to FWP within 10 DAYS of harvest (see back page)

### Why the change from mandatory carcass inspection?

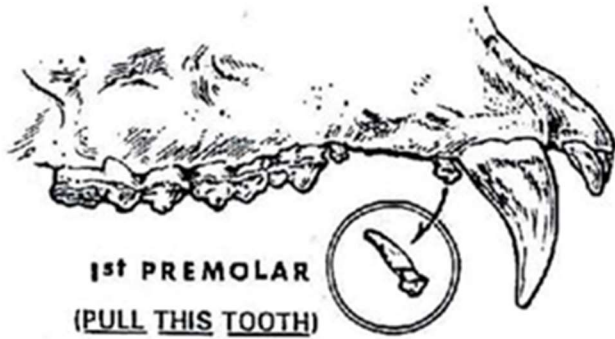
- Region 1 is conducting a pilot effort to evaluate the effectiveness of mandatory reporting and tooth submission in Montana, following the lead of other states that have used this method.
- FWP is working to improve how it monitors black bear populations.
- This change directs staff time to improving black bear population monitoring.

### Help us monitor and manage bear populations by submitting 2 premolar teeth

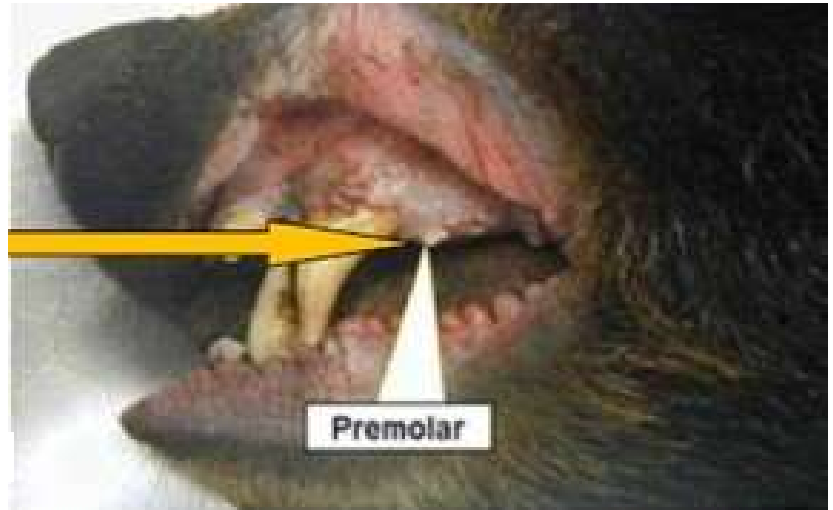
- The age of the harvested bear is obtained from the teeth.
- Biologists can use age data to improve black bear population modeling and inform monitoring efforts.
- Reporting your harvest and submission of two teeth are both **MANDATORY**.
- The age of your bear will be posted to your MyFWP account within 12 months of submission.

### How to pull a premolar tooth

To view an instructional video on pulling a premolar tooth, visit <https://bit.ly/3p8yDpU>



VIDEO & IMAGES COURTESY N.C. WILDLIFE RESOURCES COMMISSION



## Region 1 (NW Montana) Black Bear Reporting REQUIREMENTS

How to submit 2 premolar teeth from a black bear harvested in Region 1:

1. Within 48 HOURS, call in your harvest to the FWP reporting line or report online:
  - 1-877-FWP-WILD or 1-877-397-9453, or
  - Log into the MyFWP webpage -> Mandatory Reporting
2. Collect two premolar teeth.
3. Fill out the form below.
4. Place completed form and teeth (taped to this form) in a padded envelope and mail with proper postage to:
  - FWP Region 1 Headquarters, 490 N. Meridian Rd., Kalispell, MT 59901
  - Or drop off at FWP offices in Kalispell, Thompson Falls or Libby
  - Questions? Call (406) 752-5501
5. Teeth must be postmarked within 10 DAYS of harvest.

## Region 1 Black Bear Tooth Submission Form

Hunter Name: \_\_\_\_\_

Birthdate and ALS#: \_\_\_\_\_

Number Provided by FWP Reporting Center (Should start with BB): \_\_\_\_\_

Sex of Harvested Bear:    Male                  Female                  Harvest Date: \_\_\_\_\_

Did you use an outfitter?    Yes                                  No

Weapon:    Archery                          Rifle                          Handgun                          Other \_\_\_\_\_