



THE **OUTSIDE** IS IN US ALL.

## In-Between Bears

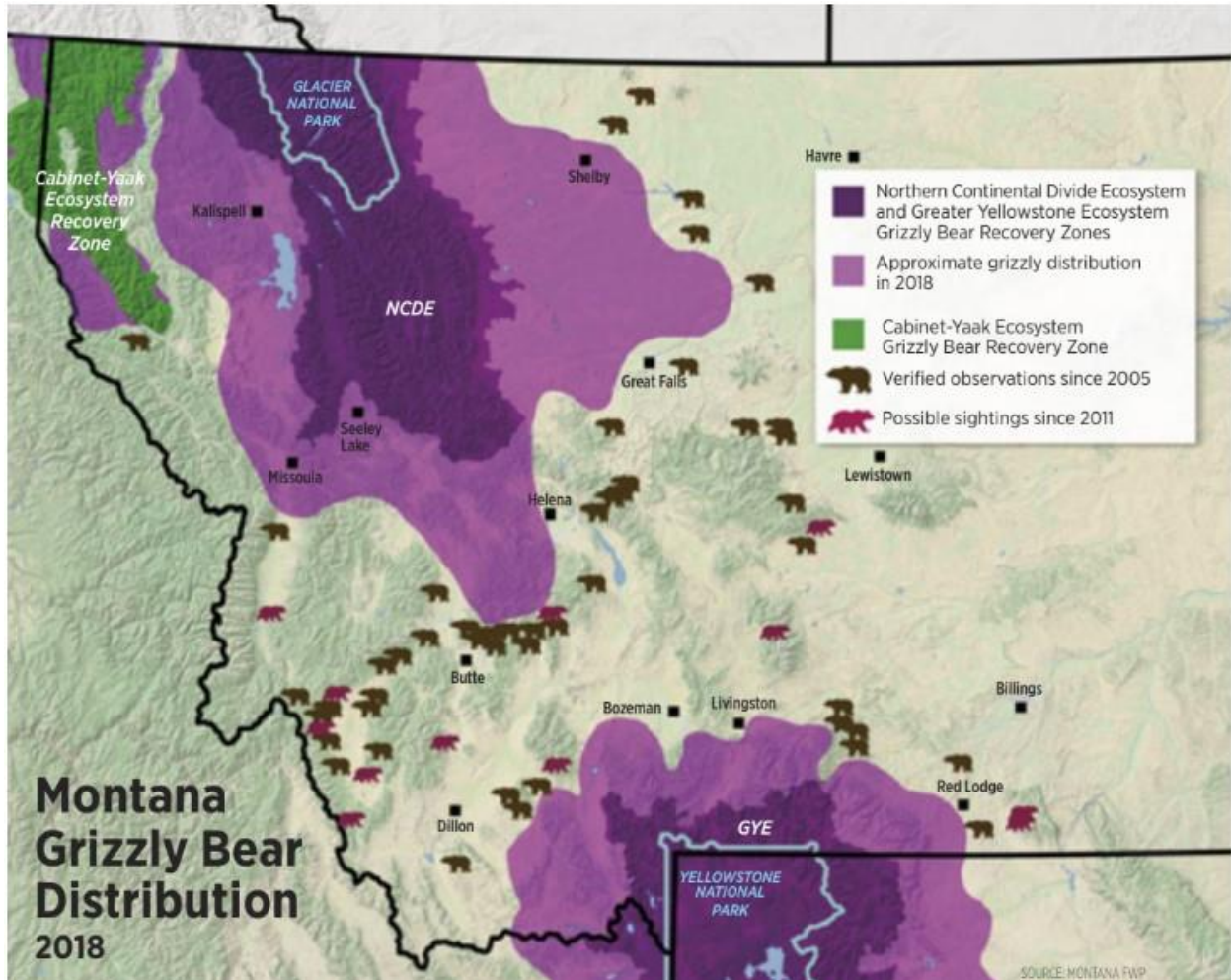
Assessment form for July/August 2020 "In-Between Bears: Communities and FWP adapt as grizzlies spread from their two primary recovery zones into historic habitats." (CCRA.R.10)

1. Who is the author of the article?
  - Tom Dickson
  - Mark Haroldson
  - Cecily Costello
  - FWP
2. Why did FWP euthanize a pair of male grizzlies near Stanford Montana in 2017?
  - The grizzlies had rabies
  - The pair of grizzlies charged two hunters
  - The pair of grizzlies killed several calves
  - The article does not mention why the pair of grizzlies were euthanized
3. What does NCDE stand for in the article?
  - Bob Marshall and Absaroka-Beartooth Wilderness Areas
  - National Creek Divide Environments
  - Northern Continental Divide Ecosystem
  - The article does not mention NCDE
4. What does GYE stand for in the article?
  - Grizzly Yellowstone Economics
  - Greater Yellowstone Ecosystem
  - Gardner Yellowstone Environment
  - The article does not mention GYE

5. According to Mark Haroldson, grizzlies have reached the carrying capacity for the NCDE and GYE. What effect is this having on grizzlies in Montana?
- Grizzlies are spreading into other areas of Montana
  - FWP has begun shipping grizzlies to other states
  - Grizzlies have stopped reproducing
  - Grizzlies are hibernating longer
6. According to Cecily Costello, what could potentially happen to grizzlies in the NCDE and GYE if the two “island” populations of bears do not eventually breed with each other?
- Grizzlies will stop breeding in Montana
  - The two “island” populations of bears will lose genetic diversity necessary for long-term survival
  - Grizzlies will eventually move to a different state where they have more opportunities to breed
  - Grizzlies will combine genetics with black bears
7. According to Mark Haroldson, why were the original grizzly recovery zones established around Glacier and Yellowstone National Parks?
- For tourists to have an opportunity to see grizzly bears
  - Because grizzlies only live in national parks
  - Because grizzlies only like to live in mountainous areas
  - Because Glacier and Yellowstone contain large blocks of public land and have few private livestock operations
8. According to Ken McDonald, what is FWP doing to reduce conflicts with grizzlies?
- Teaching residents about smart food storage and livestock protections so that bears don't get into trouble
  - Relocating grizzlies that wander out of the NCDE and GYE areas into other states
  - Allowing hunting of grizzlies in specific areas
  - Shooting grizzlies that leave the NCDE or GYE

## Get your boots on the ground and dig deeper!

Map Skills (Geography standard: Analyze maps and charts from a specific time period to understand an issue or event)



9. Select the cities that reside within the original NCDE and GYE grizzly recovery zones? (select all that apply)

- Kalispell
- Seeley Lake
- Missoula
- Shelby
- Livingston
- Bozeman

10. Select the cities that reside within the approximate distribution area of grizzlies as of 2018? (select all that apply)

- Kalispell
- Seeley Lake
- Missoula
- Shelby
- Livingston
- Bozeman
- Dillon
- Red Lodge
- Billings

11. According to the map key, what does dark green represent?

- NCDE and GYE zones
- Approximate grizzly distribution as of 2018
- Cabinet-Yaak Ecosystem grizzly recovery zone
- Verified grizzly observations as of 2005

True/False

12. Grizzlies have been verified since 2005 appearing east of Billings

- True
- False

13. Grizzlies have been verified since 2005 appearing east of Lewistown

- True
- False

14. Grizzlies have been verified since 2005 appearing east of Great Falls

- True
- False

15. The city of Great Falls is within the approximate grizzly distribution area as of 2018

- True
- False

16. The city of Butte has had one or more verified grizzly sightings since 2005 north of its location
- True
  - False
17. The city of Lewistown is within the approximate grizzly distribution area as of 2018
- True
  - False
18. The city of Helena has had one or more verified grizzly sightings since 2005 east of its location
- True
  - False



Created by Kristopher D. Schreiner  
Montana History Teacher, Kalispell  
In cooperation with  
Montana Fish, Wildlife & Parks 2020